

- Reserved for permit stamp

159 South Jackson St, Suite 800  
Seattle, Washington 98104 USA  
1 206 624 5670 [olsonkundig.com](http://olsonkundig.com)

Olson Kundig

project:  
**SOMMET BLANC - C**  
DEER VALLEY, UTAH



**Aspen Group USA, LLC**  
PO Box 980022  
Park City, Utah 84098

Pool Consultant  
**Cloward H20**  
2696 N University Ave, Suite 290  
Provo, UT 84604

Landscape Architect  
**EPG Design**  
6949 South High Tech Drive, Suite 100  
Midvale, Utah 84047

Specifications Writer  
**Friday Group**  
88 Mainelli Road  
Middlebury, VT

Code Consultant  
**Holmes**  
600 1st Avenue, Suite 200A  
Seattle, WA 98104

**Fire Protection Engineer**  
**Jensen Hughes**  
One Research Drive, Suite 305C  
Westborough, MA 01581

**Vertical Transportation Consultant**  
**Lerch Bates**  
19515 North Creek Parkway, Suite 300  
Bothell, WA 98011

Structural Engineer  
**Magnusson Klemencic Associates**  
1301 5th Ave, Suite 3200  
Seattle, WA 98101

Lighting Designer  
O-  
1319 SE MLK Blvd, Suite 210  
Portland, Oregon 97219

**Building Envelope Consultant**  
**RDH**  
2101 N 34th St  
Seattle, WA 98103

**Accessibility Consultant**  
**Studio Pacifica**  
2144 Westlake Ave N, Suite F  
Seattle, WA 98109

**MEP Engineer**  
**WSP USA**  
1001 Fourth Ave., Suite 3100  
Seattle, WA 98154

principal architect TK  
project manager JCC  
drawn by CRB, SMK  
checked by Checker  
job no. 20052  
date 04/17/2024

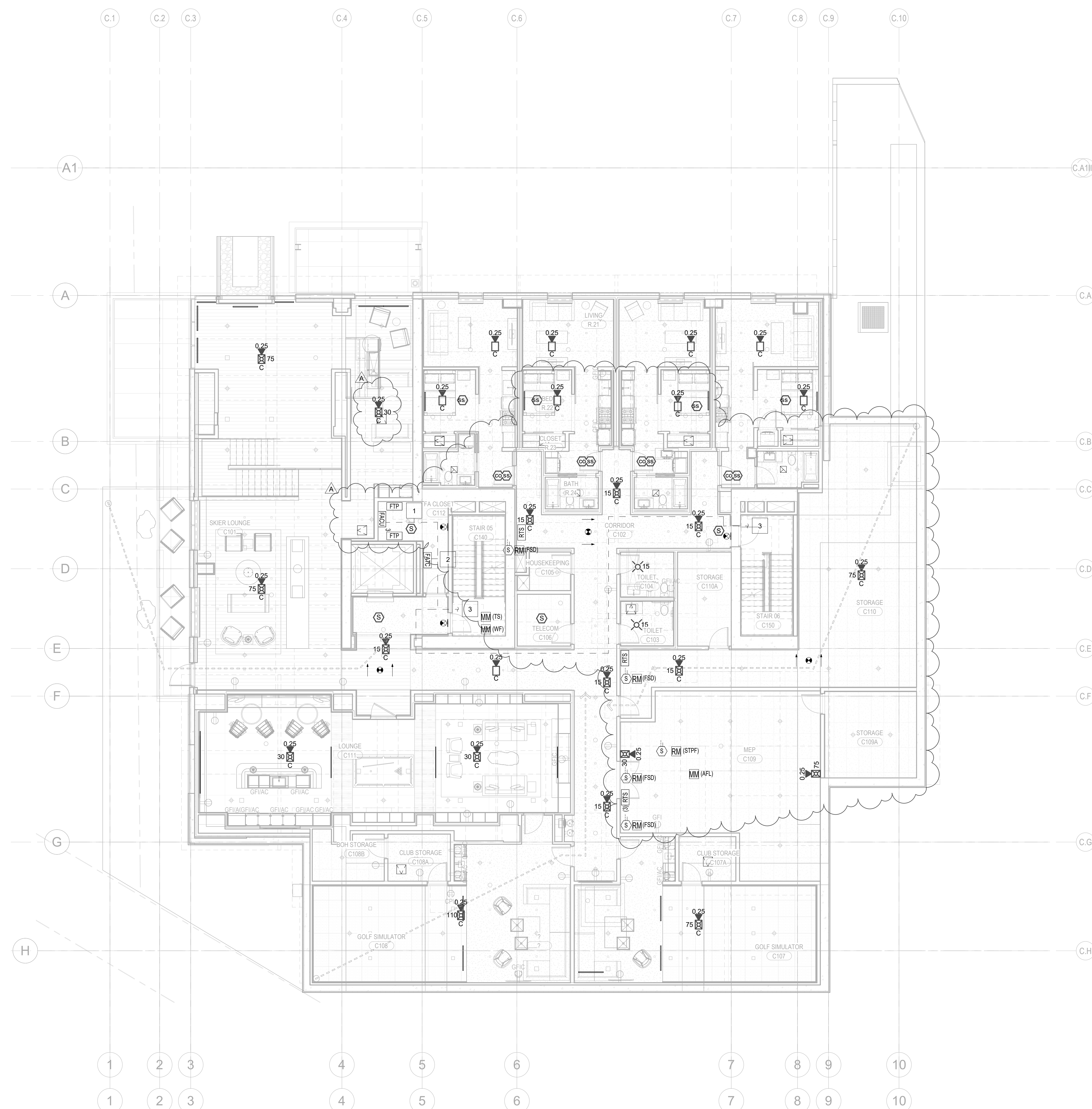
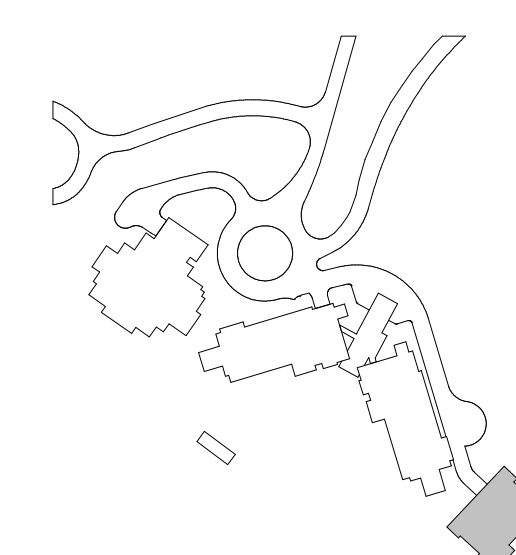
revisions:

no.	date	b
-----	------	---

IFC Set 2 of 3  
05/17/2024

FIRE ALARM PLAN -  
TOWER C - LEVEL 1

FA2.2C.11



1 LEVEL 1 - FA  
1/8" = 1'-0"