

1. SCOPE OF WORK INCLUDES SPRINKLER PROTECTION THROUGHOUT ALL AREAS IN ACCORDANCE WITH NFPA 13. SPRINKLERS ARE INDICATED IN HYDRAULIC CALCULATION REMOTE AREAS AND AREAS WITH FINISHED CEILINGS FOR COORDINATION PURPOSES. INSTALLING CONTRACTOR SHALL BE RESPONSIBLE FOR DETAILED DESIGN OF BRANCH PIPING AND UPRIGHT SPRINKLERS IN AREAS WITHOUT FINISHED CEILINGS.

159 South Jackson St, Suite 600
Seattle, Washington 98104 USA
+1 206 624 5670 olsonkundig.com

SOMMET BLANC - C
DEER VALLEY, UTAH



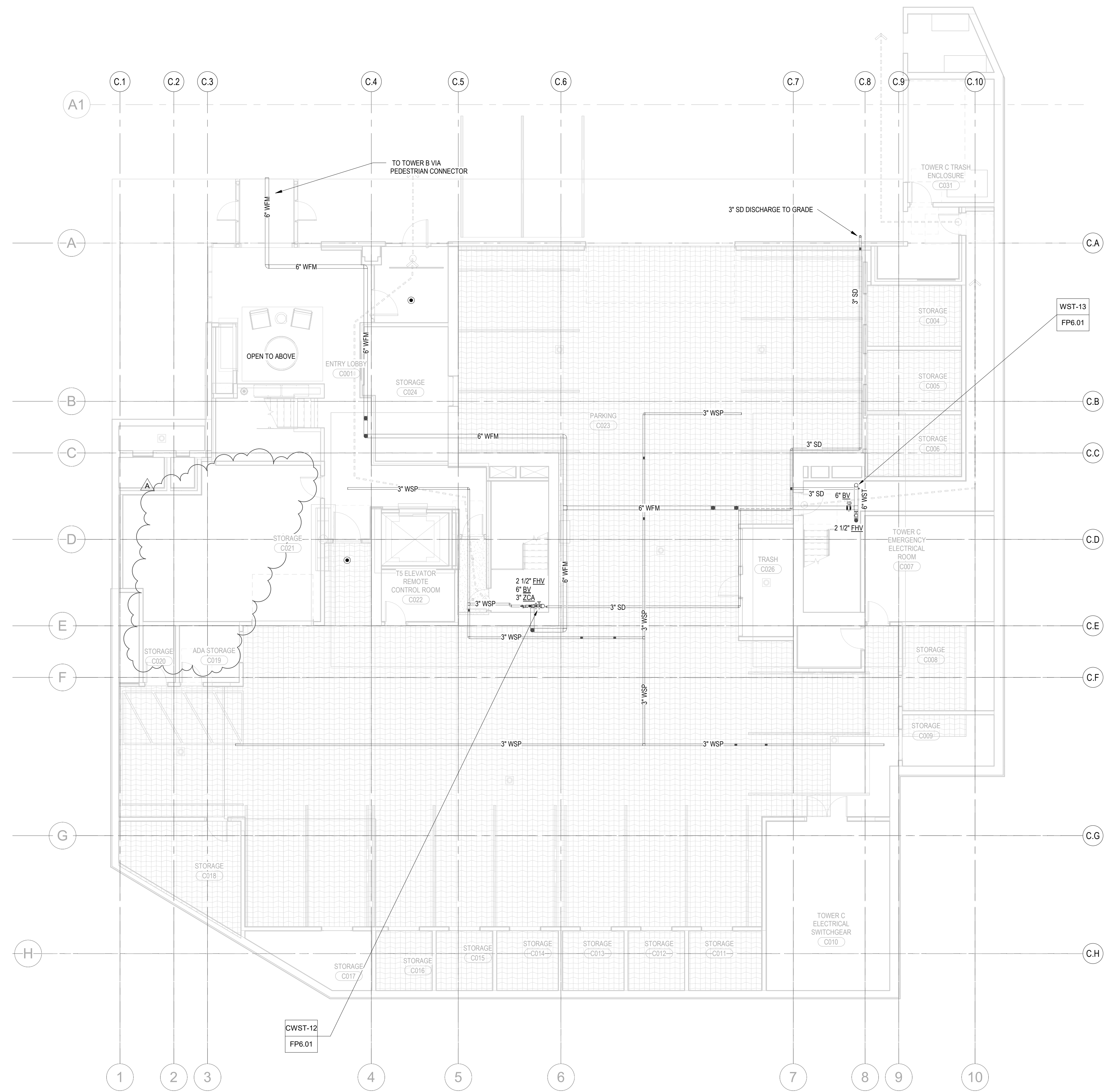
WSP USA
1001 Fourth Ave., Suite 3100
Seattle, WA 98154

revisions:

A 05/08/25 ASI-012 - JH

IFC Set 2 of 3
05/17/2024

FP2.2C.01



1 TOWER C - PARKING LEVEL - FP
1/8" = 1'-0"

