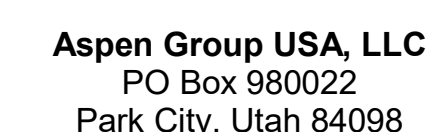


159 South Jackson St, Suite 800
Seattle, Washington 98104 USA
Tel: 206.424.5570 alexander@com...

Olson Kundig

project:
SOMMET BLANC
9300 Marsac Ave (B2 East Parcel)



Pool Consultant
Cloward H2O
2696 N University Ave., Suite 290
Provo, UT 84604

Landscape Architect
EPG Design
6949 South High Tech Drive, Suite 10
Midvale, Utah 84047

Friday Group
88 Mainelli Road
Middlebury, VT

Code Consultant
Holmes
600 1st Avenue, Suite 200A
Seattle, WA 98104

Fire Protection Engineer
Jensen Hughes
One Research Drive, Suite
Westborough, MA 01581

Vertical Transportation Consultant
Lerch Bates
19515 North Creek Parkway, Suite 300
Bothell, WA 98011

Structural Engineer
Magnusson Klemencic Associates
1301 5th Ave., Suite 3200
Seattle, WA 98101

Lighting Designer
O.
1319 SE MLK Blvd, Suite 210
Portland, Oregon 97219

Building Envelope Consultants
RDH
2101 N 34th St
Seattle, WA 98103

Accessibility Consultant
Studio Pacifica
2144 Westlake Ave N, Suite
Seattle, WA 98109

MEP Engineer
WSP USA
1001 Fourth Ave., Suite 3100
Seattle, WA 98154

principal architect _____
project manager _____
drawn by _____
checked by Checker
job no. _____
date 5/31/2024

revisions

0	5/9/2025	AS-012
1	04/10/2025	AS-012

no.	date	
-----	------	--

IFC Set 3 of 3
5/31/2024

TOWER B - LVL P1
MECHANICAL DUCT
PLAN

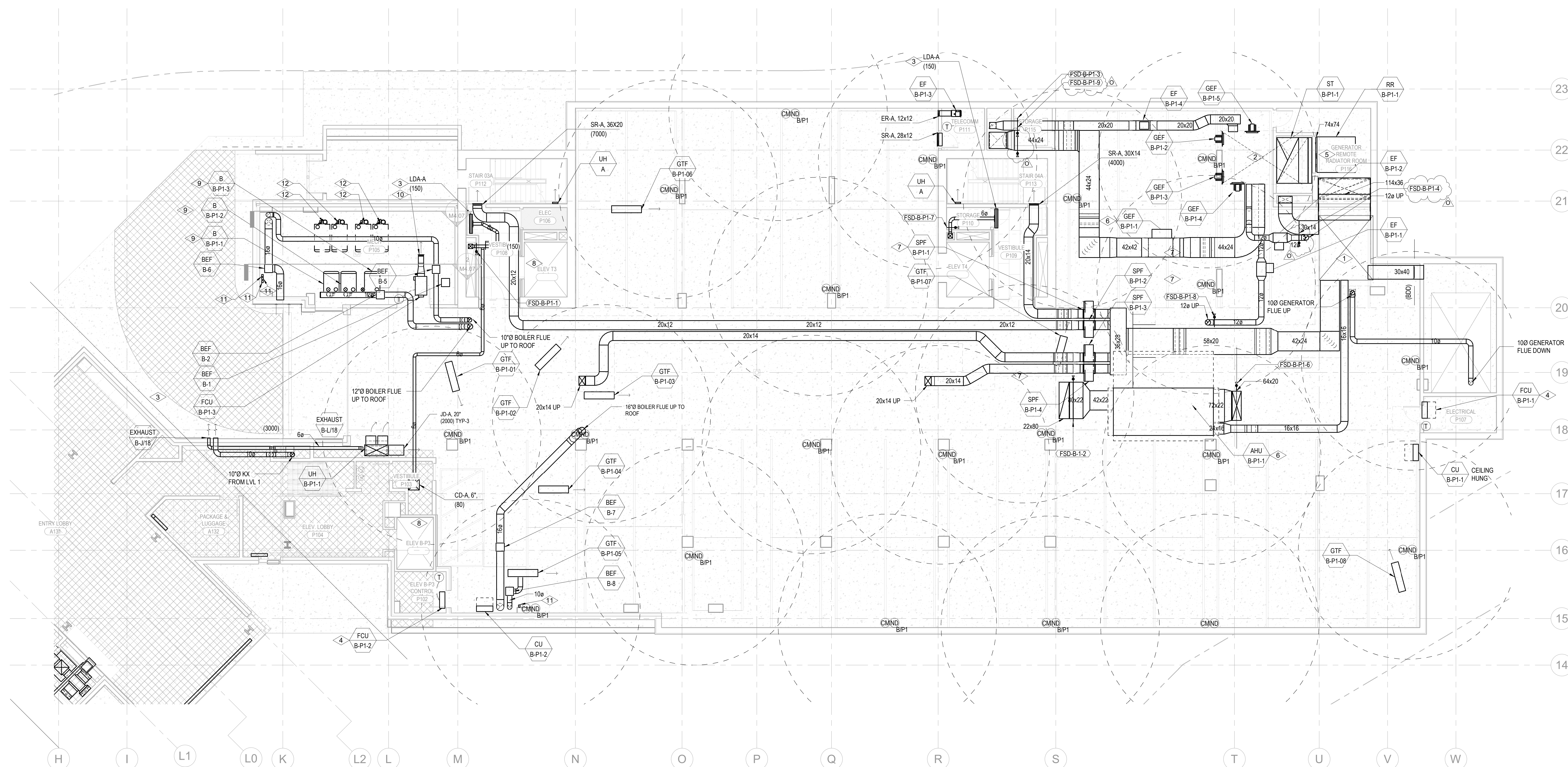
M2.2B.03

SHEET NOTES:

- A. REFER TO M2.4 SERIES FOR ENLARGED PLANS.
- B. FIREPLACE FLUE ROUTING SHOWN FOR REFERENCE. REFER TO ENLARGED UNIT PLANS FOR ROUTING AND SIZING DETAIL.
- C. MECHANICAL EQUIPMENT SHOWN FOR REFERENCE. REFER TO ENLARGED UNIT PLANS FOR DETAIL.
- D. ALL DUCTS AND EQUIPMENT LOCATED IN THE GARAGE SHALL BE INSTALLED TIGHT TO UNDERSIDE OF THE SLAB TO MAINTAIN 8'-6" CLEARANCES FOR VEHICLES.

NUMBERED NOTES:

- 1 SEE ARCHITECTURAL DRAWINGS FOR INTAKE WELL INFORMATION.
- 2 SEE ARCHITECTURAL DRAWINGS FOR EXHAUST WELL INFORMATION.
- 3 ARCHITECT TO PROVIDE 60-SQFT NFA GARAGE AND SPFF AIR INTAKE.
- 4 ROUTE CONDENSATE TO NEAREST FLOOR DRAIN.
- 5 GENERATOR REMOTE RADAR; PROVIDE BACKDRAFT DAMPERS ON THE EXHAUST AIR DUCT.
- 6 EQUIPMENT SHALL BE MOUNTED ON MECHANICAL PLATFORM ABOVE GARAGE DRIVE ISLE.
- 7 STAR PRESSURIZATION FANS AND ASSOCIATED EXTRACTOR TO BE LOCATED IN A 2-HR RATED ENCLOSURE ADJACENT TO FAN. SEE ARCHITECTURAL DRAWINGS FOR ENCLOSURE DETAIL.
- 8 1-CFM/1 SQFT PROVIDE FOR ELEVATOR LOBBY PRESSURIZATION.
- 9 PROVIDE ENERGY SMD'S MODULATING DAMPER OFF BOILER EXHAUST STACK WITH 120V/1PH ELECTRICAL POWER.
- 10 DISCHARGE AND/OR INTAKE - PROTECT OPENING WITH WMS.
- 11 CONNECT 4"Ø TO DRYER.
- 12 FUTURE SNOWMELT HEADER LOCATION, RADIANT HYDRONIC SNOWMELT SYSTEM TO BE DESIGN-BUILD BY OTHERS.



1 TOWER B - PARKING LEVEL 1 MECHANICAL DUCT PLAN
SCALE: 1/8" = 1'-0"

