



Reserved for permit stamp

159 South Jackson St., Suite 800
Seattle, Washington 98104 USA
+1 206 824 2870 olsonkundig.com

Olson Kundig

project
SOMMET BLANC - C
DEER VALLEY, UTAH



Aspen Group USA, LLC
PO Box 980022
Park City, Utah 84098

Pool Consultant
Cloward H2O
2696 N University Ave., Suite 290
Provo, UT 84604

Landscape Architect
EPG Design
6948 South High Tech Drive, Suite 100
Midvale, Utah 84047

Specifications Writer
Friday Group
86 Mainell Road
Middlebury, VT

Code Consultant
Holmes
600 1st Avenue, Suite 200A
Seattle, WA 98104

Fire Protection Engineer
Jensen Hughes
One Research Drive, Suite 305C
Westborough, MA 01581

Vertical Transportation Consultant
Larch Bates
19515 North Creek Parkway, Suite 304
Bothell, WA 98011

Structural Engineer
Magnusson Klemencic Associates
1301 5th Ave., Suite 3200
Seattle, WA 98101

Lighting Designer
O
1319 SE MLK Blvd., Suite 210
Portland, Oregon 97219

Building Envelope Consultant
RDH
2101 N 34th St
Seattle, WA 98103

Accessibility Consultant
Studio Pacifica
2144 Westlake Ave N, Suite F
Seattle, WA 98109

MEP Engineer
WSP USA
1001 Fourth Ave., Suite 3100
Seattle, WA 98154

principal architect..._TK
project manager..._JCC
drawn by..._CRS, SMK

checked by..._Checker
job no. 2052
date 05/17/2024

revisions:

A 05/08/25 ASI-012 - JH

no. date by

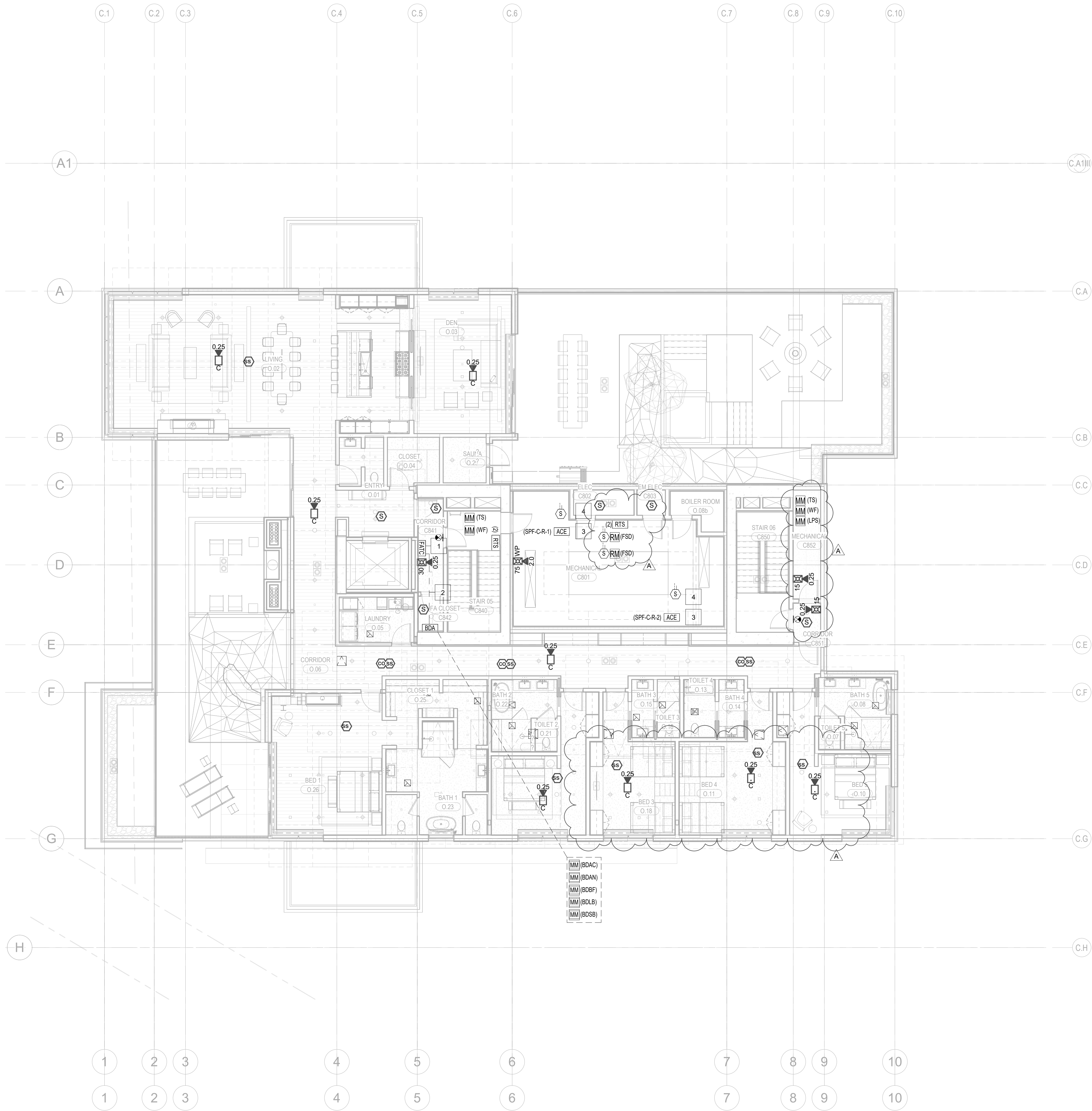
IFC Set 2 of 3
05/17/2024

FIRE ALARM PLAN -
TOWER C - LEVEL 8

FA2.2C.18

KEYNOTES:

- 1 FIRE ALARM TERMINAL CABINET WITHIN 2-HR RATED SHAFT ACCESSIBLE VIA 2-HR RATED ACCESS PANEL. COORDINATE INSTALLATION AND ACCESS WITH DIVISION 26.
- 2 2-HR UL LISTED RATED COAXIAL CABLE SYSTEM FROM BDA TO 2-HR RATED CLOSET. COAXIAL BACKBONE TO BE INSTALLED IN 2-HR CLOSET NEXT TO FIRE ALARM RISER WITH SPLITTERS AT EACH LEVEL ACCESSIBLE FROM SAME ACCESS PANEL PROVIDED FOR FATU ACCESS.
- 3 ACCESSORY CABINET ENCLOSURE FOR SMOKE CONTROL FAN INTERFACE LOCATED IN NEMA-4 CONDITIONED ENCLOSURE ADJACENT TO FAN VFD. REFER TO DETAIL S ON FAT-01 FOR ADDITIONAL INFORMATION. MODULES SHALL BE CONNECTED TO 2-HR DEDICATED BUS FROM TOWER C FACU. PROVIDE 24-VDC POWER THROUGH FAS AND SUPERVISE FOR LOW TEMPERATURE ALARM VIA ADDRESSABLE MONITOR MODULE.
- 4 STAIR PRESSURIZATION FAN DUCT DETECTOR IN NEMA ENCLOSURE.



1 LEVEL 8 - FA
1/8" = 1'-0"

