



Reserved for permit stamp

139 South Jackson St., Suite 800  
Seattle, Washington 98104 USA  
+1 206 834 2877 olsonkundig.com

Olson Kundig

project  
SOMMET BLANC - C  
DEER VALLEY, UTAH



Aspen Group USA, LLC  
PO Box 980022  
Park City, Utah 84098

**Pool Consultant**  
Cloward H2O  
2696 N University Ave., Suite 290  
Provo, UT 84604

**Landscape Architect**  
EPG Design  
6948 South High Tech Drive, Suite 100  
Midvale, Utah 84047

**Specifications Writer**  
Friday Group  
86 Mainelli Road  
Middlebury, VT

**Code Consultant**  
Holmes  
600 1st Avenue, Suite 200A  
Seattle, WA 98104

**Fire Protection Engineer**  
Jensen Hughes  
One Research Drive, Suite 305C  
Westborough, MA 01581

**Vertical Transportation Consultant**  
Larch Bates  
19515 North Creek Parkway, Suite 304  
Bothell, WA 98011

**Structural Engineer**  
Magnusson Klemencic Associates  
1301 5th Ave., Suite 3200  
Seattle, WA 98101

**Lighting Designer**  
O  
1319 SE MLK Blvd, Suite 210  
Portland, Oregon 97219

**Building Envelope Consultant**  
RDH  
2101 N 34th St  
Seattle, WA 98103

**Accessibility Consultant**  
Studio Pacifica  
2144 Westlake Ave N, Suite F  
Seattle, WA 98109

**MEP Engineer**  
WSP USA  
1001 Fourth Ave., Suite 3100  
Seattle, WA 98154

principal architect \_\_\_\_\_ JTK  
project manager \_\_\_\_\_ JCC  
drawn by \_\_\_\_\_ CRS, SMK  
checked by \_\_\_\_\_ Checker  
job no. 20052  
date 05/17/2024

revisions:

\_\_\_\_\_  
\_\_\_\_\_  
\_\_\_\_\_  
\_\_\_\_\_  
\_\_\_\_\_  
\_\_\_\_\_  
\_\_\_\_\_  
\_\_\_\_\_  
\_\_\_\_\_  
\_\_\_\_\_  
A 05/08/25 ASI-012 - JH

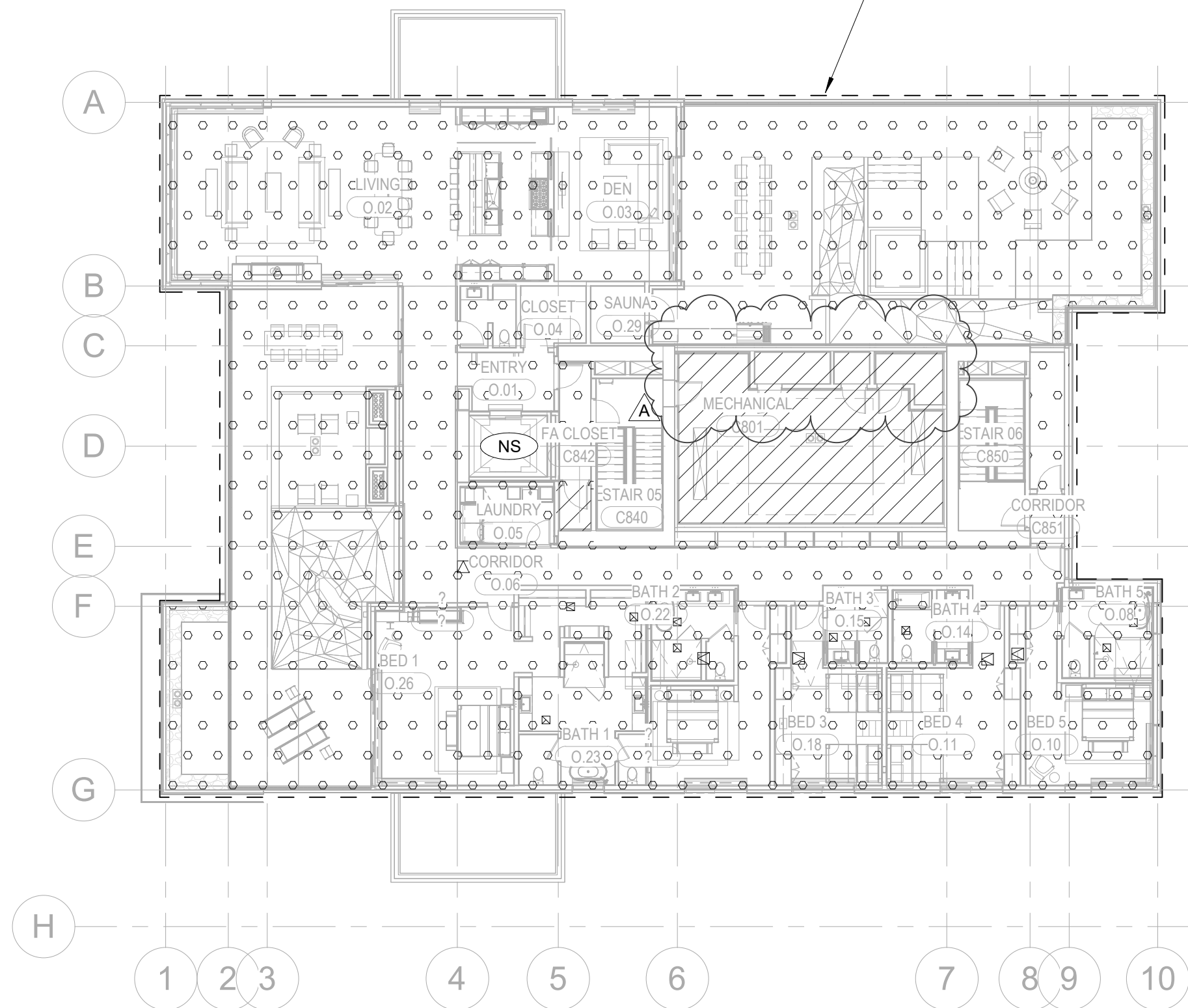
no. date by

IFC Set 2 of 3  
05/17/2024

FIRE PROTECTION -  
TOWER C - ZONING  
PLANS

FP1.09

WET SPRINKLER ZONE  
TOWER C LEVEL 8 ZONE 1  
(APPROX. 10,700 SQ. FT.)



TOWER C - LEVEL 8 - ZONING PLAN

1/16" = 1'-0"

FIRE PROTECTION DESIGN HATCH LEGEND

	LH	LIGHT HAZARD; SYSTEM PROVIDING A DENSITY OF .10 GPM/SQFT. OVER DESIGN AREA OF 1,500 SQ. FT. WITH 100 GPM HOSE ALLOWANCE
	RES	RESIDENTIAL HAZARD; SYSTEM PROVIDING A DENSITY OF .10 GPM/SQFT. OVER DESIGN AREA OF 4 SPRINKLERS WITH 100 GPM HOSE ALLOWANCE
	OH1	ORDINARY HAZARD GROUP 1; SYSTEM PROVIDING A DENSITY OF .15 GPM/SQFT. OVER DESIGN AREA OF 1,500 SQ. FT. WITH 250 GPM HOSE ALLOWANCE
	OH2	ORDINARY HAZARD GROUP 2; SYSTEM PROVIDING A DENSITY OF .20 GPM/SQFT. OVER DESIGN AREA OF 1,500 SQ. FT. WITH 250 GPM HOSE ALLOWANCE
	EX1	EXTRA HAZARD GROUP 1; SYSTEM PROVIDING A DENSITY OF .30 GPM/SQFT. OVER DESIGN AREA OF THE ENTIRE ROOM WITH 500 GPM HOSE ALLOWANCE
	NS	NON-SPRINKLERED AREA