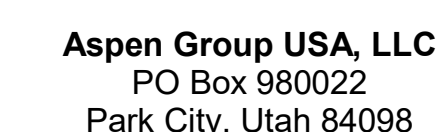


Olson Kundig

Project: **SOMMET BLANC - C**
DEER VALLEY, UTAH



MEP Engineer
WSP USA
1001 Fourth Ave., Suite 3100
Seattle, WA 98154

principal architect TK
project manager JCC
drawn by CRB, SMK
checked by Checker
job no. 20052
date 05/17/2024

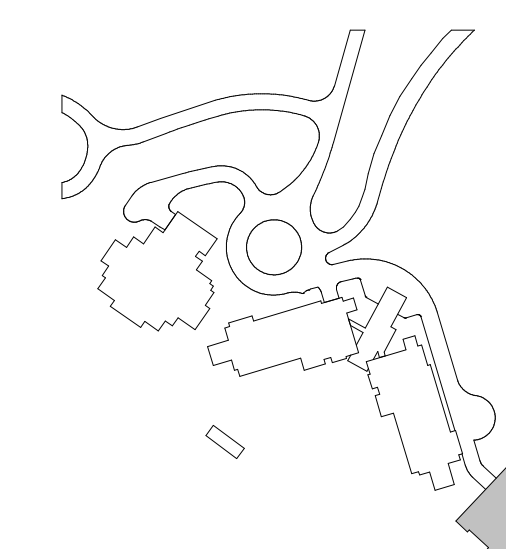
revisions:

no.	date	
-----	------	--

IFC Set 2 of 3
05/17/2024

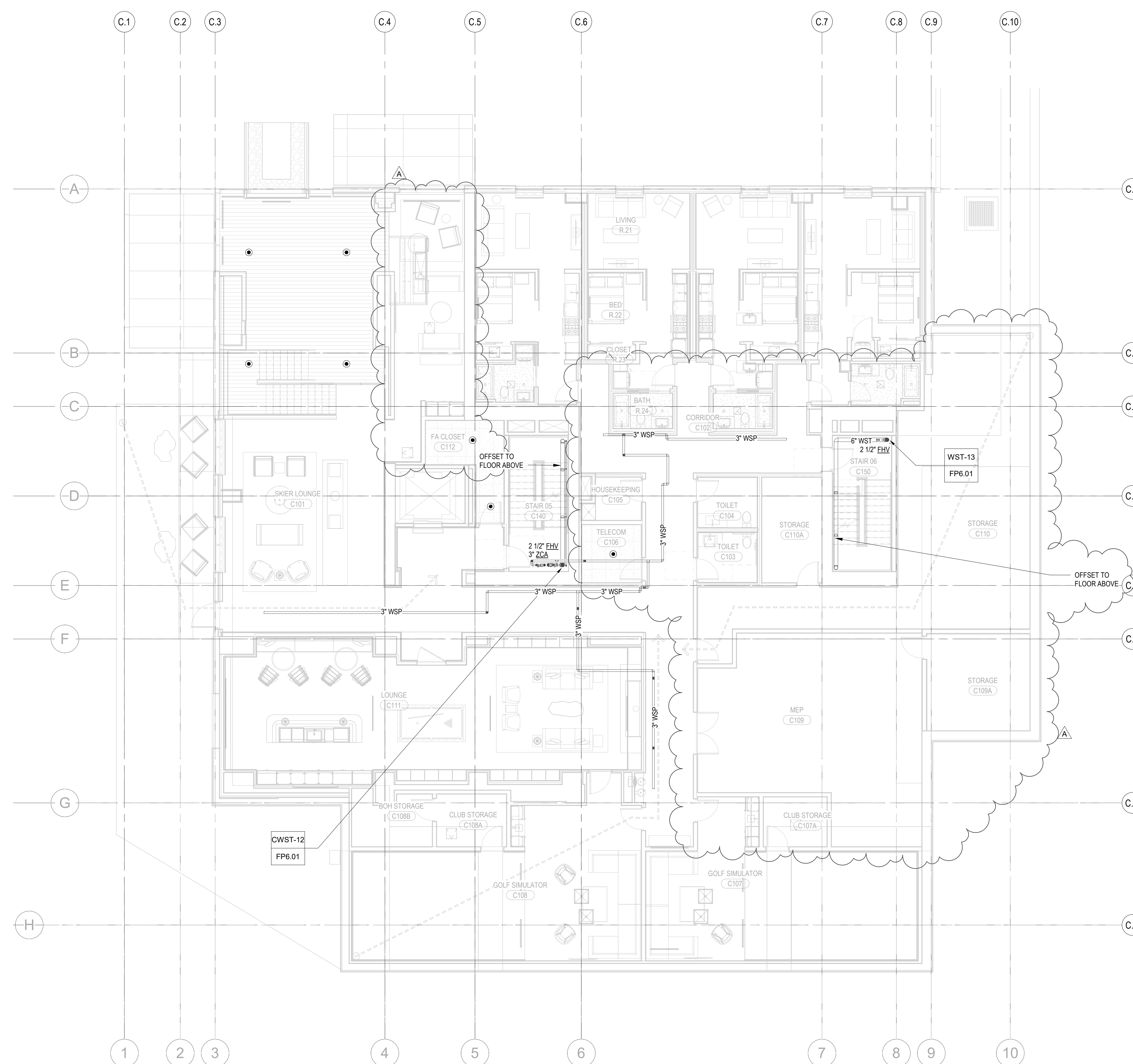
FIRE PROTECTION PLAN
- TOWER C - LEVEL 1

FP2.2C.11



GENERAL NOTES:

1. SCOPE OF WORK INCLUDES SPRINKLER PROTECTION THROUGHOUT ALL AREAS IN ACCORDANCE WITH NFPA 13. SPRINKLERS ARE INDICATED IN HYDRAULIC CALCULATION REMOTE AREAS AND AREAS WITH FINISHED CEILINGS FOR COORDINATION PURPOSES. INSTALLING CONTRACTOR SHALL BE RESPONSIBLE FOR DETAILED DESIGN OF BRANCH PIPING AND UPRIGHT SPRINKLERS IN AREAS WITHOUT FINISHED CEILINGS.



1 TOWER C - LEVEL 1 - FP
1/8" = 1'-0"