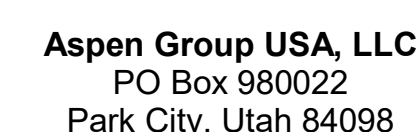


159 South Jackson St, Suite 800  
Seattle, Washington 98104 USA  
+1 206 624 5670 [disonkundig.com](http://disonkundig.com)

Olson Kundig

project:  
**SOMMET BLANC**  
9300 Marsac Ave (B2 East Parcel)  
City: L-4 84060



Pool Consultant  
**Cloward H20**  
2696 N University Ave., Suite 290  
Provo, UT 84604

Landscape Architect  
**EPG Design**  
6949 South High Tech Drive, Suite 10  
Midvale, Utah 84047

Specifications Writer  
**Friday Group**  
 88 Mainelli Road  
 Middlebury, VT

Code Consultant  
**Holmes**  
600 1st Avenue, Suite 200A  
Seattle, WA 98104

Fire Protection Engineer  
**Jensen Hughes**  
One Research Drive, Suite 305C  
Westborough, MA 01581

**Vertical Transportation Consultant**  
**Lerch Bates**  
19515 North Creek Parkway, Suite 30  
Bothell, WA 98011

Structural Engineer  
**Magnusson Klemencic Associates**  
1301 5th Ave, Suite 3200  
Seattle, WA 98101

**Lighting Designer**  
O.  
1319 SE MLK Blvd, Suite 210  
Portland, Oregon 97216

**Building Envelope Consultant**  
**RDH**  
2101 N 34th St  
Tulsa, OK 74103

Accessibility Consultant  
**Studio Pacifica**  
2144 Westlake Ave N, Suite F

MEP Engineer  
**WSP USA**  
1001 Fourth Ave., Suite 3100

principal architect \_\_\_\_\_  
project manager \_\_\_\_\_  
drawn by \_\_\_\_\_  
checked by Checker  
job no. \_\_\_\_\_  
date 5/31/2024

revisions

N	05/21/2025	ASI 011
2	5/31/2024	IFC 3

IFC Set 3 of 3  
5/31/2024

TOWER A/B ELECTRICAL  
LIGHTING PLAN - UNIT A

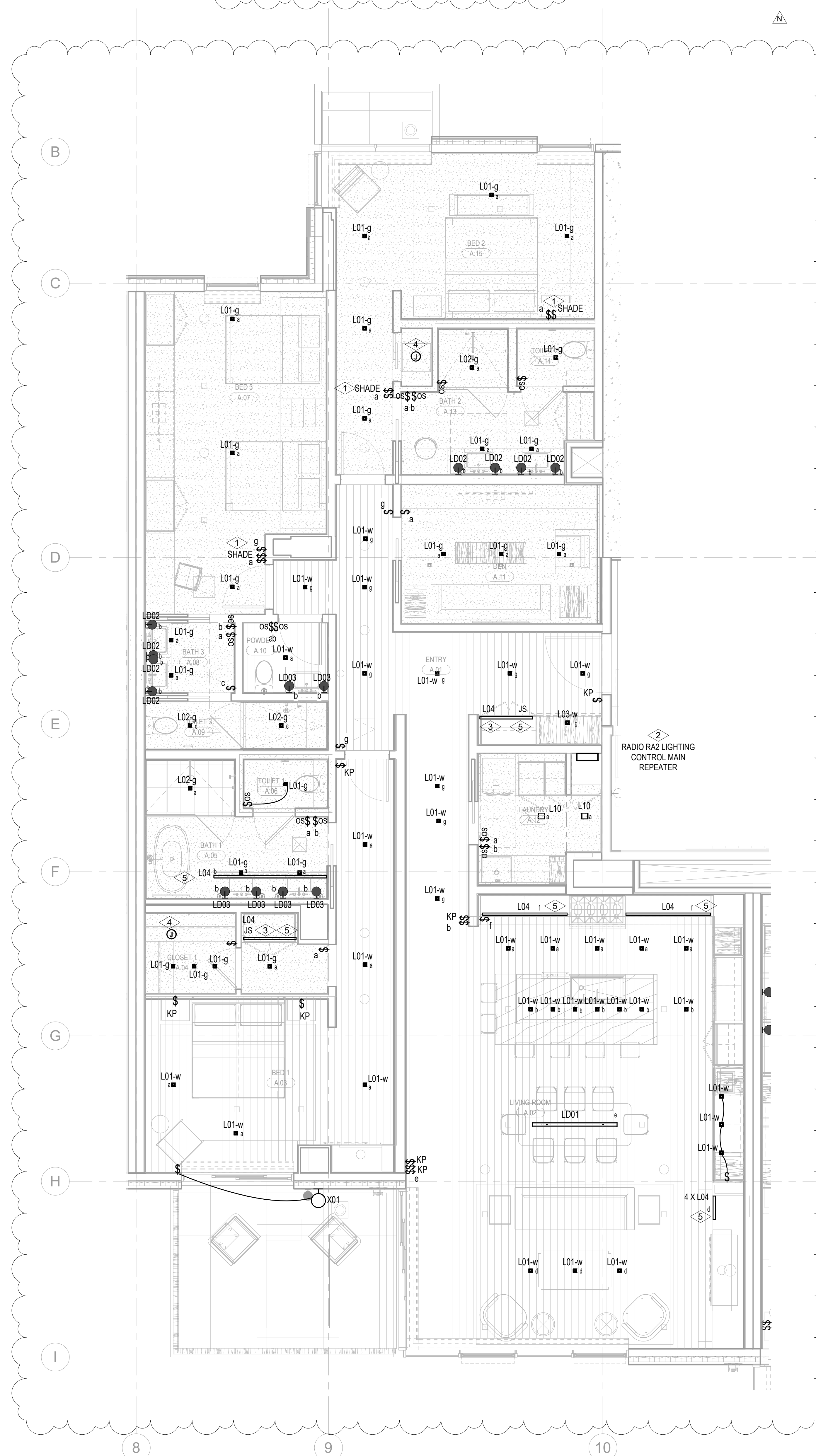
### E3.4.A

**SHEET NOTES:**

- A. DRAWINGS ARE INTENDED TO SHOW GENERAL ARRANGEMENT, DESIGN, AND EXTENT OF WORK AND ARE DIAGRAMMATIC. DRAWINGS ARE NOT INTENDED TO SHOW EXACT LOCATIONS EXCEPT WHERE DIMENSIONS ARE SHOWN. ELECTRICAL WORK IS SHOWN ON PLANS USING STANDARD INDUSTRY SYMBOLS. BEFORE ORDERING MATERIALS OR COMMENCEMENT OF WORK, VERIFY MEASUREMENTS PERTAINING THERETO AND ASSUME RESPONSIBILITY THEREFOR. ANY SUBSTANTIAL DIFFERENCES BETWEEN DRAWINGS AND CONDITIONS IN THE FIELD SHALL BE SUBMITTED TO THE CONSTRUCTION SUPERVISOR FOR CONSIDERATION. THE CONTRACTOR SHALL BE RESPONSIBLE FOR WORK PERFORMANCE INCLUDES LABOR, MATERIALS, AND EQUIPMENT REQUIRED TO INSTALL A COMPLETE ELECTRICAL SYSTEM AS INDICATED ON DRAWINGS AND SPECIFICATIONS.
- B. PROVIDE EXIST SIGNS AND CONNECT EXIST SIGNS AND LUMINAIRES NOTED AS EMERGENCY TO EMERGENCY POWER SOURCES.
- C. REFER TO LUMINAIRE SCHEDULE FOR INFORMATION.
- D. E. F. G. H. I. J. K. L. M. N. O. P. Q. R. S. T. U. V. W. X. Y. Z. AA. AB. AC. AD. AE. AF. AG. AH. AI. AJ. AK. AL. AM. AN. AO. AP. AQ. AR. AS. AT. AU. AV. AW. AX. AY. AZ. BA. BB. BC. BD. BE. BF. BG. BH. BI. BJ. BK. BL. BM. BN. BO. BP. BQ. BR. BS. BT. BU. BV. BW. BX. BY. BZ. CA. CB. CC. CD. CE. CF. CG. CH. CI. CJ. CK. CL. CM. CN. CO. CP. CQ. CR. CS. CT. CU. CV. CW. CX. CY. CZ. DA. DB. DC. DD. DE. DF. DG. DH. DI. DJ. DK. DL. DM. DN. DO. DP. DQ. DR. DS. DT. DU. DV. DW. DX. DY. DZ. EA. EB. EC. ED. EE. EF. EG. EH. EI. EJ. EK. EL. EM. EN. EO. EP. EQ. ER. ES. ET. EU. EV. EW. EX. EY. EZ. FA. FB. FC. FD. FE. FF. FG. FH. FI. FJ. FK. FL. FM. FN. FO. FP. FQ. FR. FS. FT. FU. FV. FW. FX. FY. FZ. GA. GB. GC. GD. GE. GF. GG. GH. GI. GJ. GK. GL. GM. GN. GO. GP. GQ. GR. GS. GT. GU. GV. GW. GX. GY. GZ. HA. HB. HC. HD. HE. HF. HG. HH. HI. HJ. HK. HL. HM. HN. HO. HP. HQ. HR. HS. HT. HU. HV. HW. HX. HY. HZ. IA. IB. IC. ID. IE. IF. IG. IH. II. IJ. IK. IL. IM. IN. IO. IP. IQ. IR. IS. IT. IU. IV. IW. IX. IY. IZ. JA. JB. JC. JD. JE. JF. JG. JH. JI. JJ. JK. JL. JM. JN. JO. JP. JQ. JR. JS. JT. JU. JV. JW. JX. JY. JZ. KA. KB. KC. KD. KE. KF. KG. KH. KI. KJ. KK. KL. KM. KN. KO. KP. KQ. KR. KS. KT. KU. KV. KW. KX. KY. KZ. LA. LB. LC. LD. LE. LF. LG. LH. LI. LJ. LK. LL. LM. LN. LO. LP. LQ. LR. LS. LT. LU. LV. LW. LX. LY. LZ. MA. MB. MC. MD. ME. MF. MG. MH. MI. MJ. MK. ML. MM. MN. MO. MP. MQ. MR. MS. MT. MU. MV. MW. MX. MY. MZ. NA. NB. NC. ND. NE. NF. NG. NH. NI. NJ. NK. NL. NM. NO. NP. NQ. NR. NS. NT. NU. NV. NW. NX. NY. NZ. OA. OB. OC. OD. OE. OF. OG. OH. OI. OJ. OK. OL. OM. ON. OO. OP. OQ. OR. OS. OT. OU. OV. OW. OX. OY. OZ. PA. PB. PC. PD. PE. PF. PG. PH. PI. PJ. PK. PL. PM. PN. PO. PP. PQ. PR. PS. PT. PU. PV. PW. PX. PY. PZ. QA. QB. QC. QD. QE. QF. QG. QH. QI. QJ. QK. QL. QM. QN. QO. QP. QQ. QR. QS. QT. QU. QV. QW. QX. QY. QZ. RA. RB. RC. RD. RE. RF. RG. RH. RI. RJ. RK. RL. RM. RN. RO. RP. RQ. RR. RS. RT. RU. RV. RW. RX. RY. RZ. SA. SB. SC. SD. SE. SF. SG. SH. SI. SJ. SK. SL. SM. SN. SO. SP. SQ. SR. SS. ST. SU. SV. SW. SX. SY. SZ. TA. TB. TC. TD. TE. TF. TG. TH. TI. TJ. TK. TL. TM. TN. TO. TP. TQ. TR. TS. TT. TU. TV. TW. TX. TY. TZ. UA. UB. UC. UD. UE. UF. UG. UH. UI. UJ. UK. UL. UM. UN. UO. UP. UQ. UR. US. UT. UU. UV. UW. UX. UY. UZ. VA. VB. VC. VD. VE. VF. VG. VH. VI. VJ. VK. VL. VM. VN. VO. VP. VQ. VR. VS. VT. VU. VV. VW. VX. VY. VZ. WA. WB. WC. WD. WE. WF. WG. WH. WI. WJ. WK. WL. WM. WN. WO. WP. WQ. WR. WS. WT. WU. WV. WW. WX. WY. WZ. XA. XB. XC. XD. XE. XF. XG. XH. XI. XJ. XK. XL. XM. XN. XO. XP. XQ. XR. XS. XT. XU. XV. XW. XX. XY. XZ. YA. YB. YC. YD. YE. YF. YG. YH. YI. YJ. YK. YL. YM. YN. YO. YP. YQ. YR. YS. YT. YU. YV. YW. YX. YY. YZ. ZA. ZB. ZC. ZD. ZE. ZF. ZG. ZH. ZI. ZJ. ZK. ZL. ZM. ZN. ZO. ZP. ZQ. ZR. ZS. ZT. ZU. ZV. ZW. ZX. ZY. ZZ.
- COORDINATE REMOTE DEVICE MOUNTING LOCATIONS WITH ARCHITECT PRIOR TO ROUGH IN.
- K. COORDINATE LUMINAIRE VOLTAGE WITH ARCHITECT AND OWNER PRIOR TO PURCHASE AND INSTALLATION TYPICAL FOR ALL UNIT LIGHTING.
- L. COORDINATE WITH ARCHITECT AND OWNER PRIOR TO UNIT CEILING TIE FINISH UPGRADES PRIOR TO PURCHASE AND INSTALLATION.

**NUMBERED NOTES:**

- 1 LUTRON WIRELESS PICO CONTROL SWITCH IS TO BE SUPPLIED AND INSTALLED FOR SHADE CONTROL.
- 2 SUPPLY AND INSTALL LUTRON RADIO RAD R8 SYSTEM TO PROVIDE PARTIAL LIGHTING CONTROL IN THE RESIDENTIAL UNITS. MASTER BEDROOM (IDENTIFIED AS 'BED 1') AND ALL ROOMS WITH MORE THAN THREE (3) LIGHTING CONTROL ZONES ARE TO BE CONTROLLED BY THE LUTRON RADIO RAD R8 SYSTEM. ALL ROOMS WITH THREE (3) LIGHTING CONTROL ZONES OR LESS ARE TO BE CONTROLLED BY LOCAL DIMMERS.
- 3 LIGHT FIXTURE LOCATION IN CLOSETS ARE TO BE CONTROLLED BY CLOSET DOOR JAMB SWITCH.
- 4 SUPPLY AND INSTALL CEILING MOUNTED JUNCTION BOX COMPLETE WITH CAPPED LIGHTING CIRCUIT WIRING FOR INSTALLATION OF FUTURE CLOSET LIGHT FIXTURE.
- 5 REFER TO ARCHITECTURAL DRAWINGS AND ELEVATIONS FOR EXACT DIMENSION AND MOUNTING LOCATION OF LIGHT FIXTURE TYPE TO COORDINATE WITH MILLWORK CONTRACTOR PRIOR TO INSTALLATION.



1 TOWER A/B - ELECTRICAL LIGHTING PLAN - UNIT A  
SCALE: 1/4" = 1'-0"

