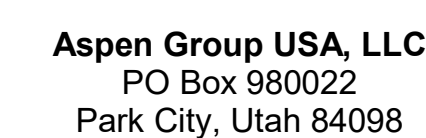


159 South Jackson St, Suite 800
Seattle, Washington 98104 USA
+1 206 624 5670 disonkundig.com

Olson Kundig

project:
SOMMET BLANC
9300 Marsac Ave (B2 East Parcel)
City: L-4 84060



Pool Consultant
Cloward H20
2696 N University Ave., Suite 290
Provo, UT 84604

Landscape Architect
EPG Design
6949 South High Tech Drive, Suite 10
Midvale, Utah 84047

Specifications Writer
Friday Group
88 Mainelli Road
Middlebury, VT

Code Consultant
Holmes
600 1st Avenue, Suite 200A
Seattle, WA 98104

Fire Protection Engineer
Jensen Hughes
One Research Drive, Suite 305C
Westborough, MA 01581

Vertical Transportation Consultant
Lerch Bates
19515 North Creek Parkway, Suite 300
Bothell, WA 98011

Structural Engineer
Magnusson Klemencic Associates
1301 5th Ave, Suite 3200
Seattle, WA 98101

Lighting Designer
O-
1319 SE MLK Blvd, Suite 210
Portland, Oregon 97219

Building Envelope Consultant
RDH
2101 N 34th St
Seattle, WA 98103

Accessibility Consultant
Studio Pacifica
2144 Westlake Ave N, Suite F
Seattle, WA 98109

MEP Engineer
WSP USA
1001 Fourth Ave., Suite 3100
Seattle, WA 98154

principal architect _____
project manager _____
drawn by _____
checked by Checker
job no. _____
date 5/31/2024

revisions:

N 05/21/2025 ASI 011

| no. | date | |
|-----|------|--|
|-----|------|--|

IFC Set 3 of 3
5/31/2024

TOWER A/B ELECTRICAL
LIGHTING PLAN - UNIT C

E3.4.C

A. DRAWINGS ARE INTENDED TO SHOW GENERAL ARRANGEMENT, DESIGN, AND EXTENT OF WORK AND ARE DIAGRAMMATIC. DRAWINGS ARE NOT INTENDED TO SHOW EXACT LOCATIONS EXCEPT WHERE DIMENSIONS ARE SHOWN. ELECTRICAL WORK IS SHOWN ON PLANS USING STANDARD SYMBOLS AND CONVENTIONS. THE ORDERING MATERIALS OF COMMENCEMENT WITH WORK, VERIFY MEASUREMENTS PERTAINING THERETO AND ASSUME RESPONSIBILITY THEREFOR. ANY SUBSTANTIAL DIFFERENCES BETWEEN DRAWINGS AND CONDITIONS IN THE FIELD SHALL BE SUBMITTED TO THE CONSTRUCTION MANAGER OR CONSIDERED AS AN OMISSION.

B. WORK PERFORMANCE INCLUDES LABOR, MATERIALS, AND EQUIPMENT REQUIRED TO INSTALL A COMPLETE ELECTRICAL SYSTEM AS INDICATED ON DRAWINGS AND SPECIFICATIONS.

C. PROVIDE ALL WIRING AND CONDUIT. PROVIDE ALL MEASURES NOTED AS EMERGENCY TO EMERGENCY POWER SOURCE AS INDICATED ON PLANS.

D. REFER TO LUMINAIRE SCHEDULE FOR INFORMATION.

E. PROVIDE CATALOG NUMBERS ARE SUBJECT TO CHANGE BY MANUFACTURER. VERIFY FACTORY CATALOG NUMBERS FOR EQUIPMENT.

F. VERIFY EQUIPMENT SIZES AND POWER REQUIREMENTS FOR EQUIPMENT PROVIDED BY OTHERS.

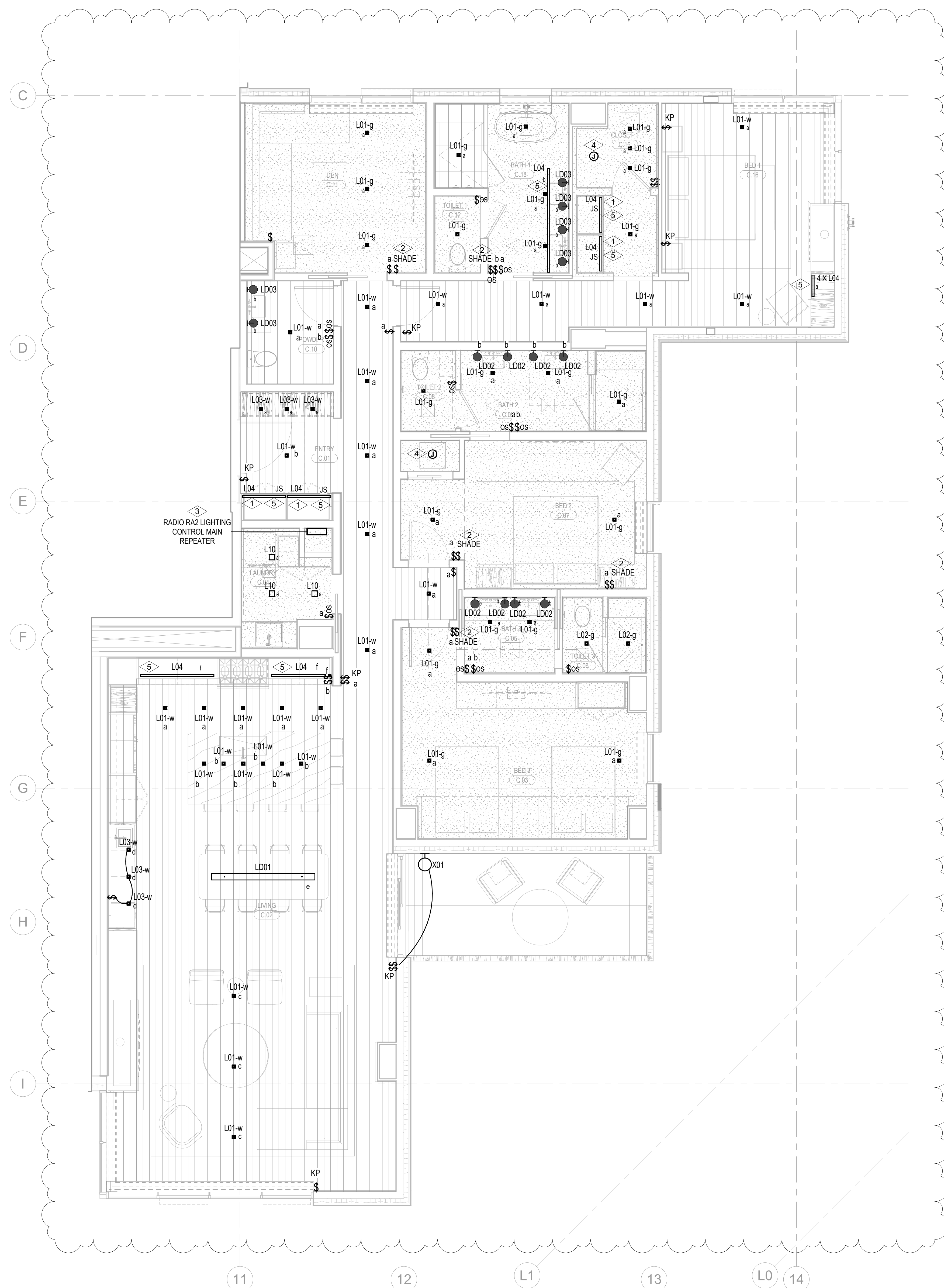
G. ELECTRICAL CONDUITS IN FINISHED SPACES SHALL BE CONCEALED. COORDINATE WITH OTHER TRADES AND USE CHASES AND CEILING SPACES. LOCATIONS OF ELECTRICAL JUNCTION BOXES IN FINISHED SPACES SHALL BE APPROVED BY ARCHITECT PRIOR TO ROUGH-IN.

H. COORDINATE REMOTE DRIVER MOUNTING LOCATIONS WITH ARCHITECT PRIOR TO ROUGH-IN.

I. COORDINATE LUMINAIRE VOLTAGE WITH ARCHITECT AND OWNER PRIOR TO PURCHASE AND INSTALLATION TYPICAL FOR ALL UNIT LIGHTING.

J. COORDINATE WITH CLIENT AND OWNER ON UNIT LIGHTING FINISH UPDATES PRIOR TO PURCHASE AND INSTALLATION.

- 1 LIGHT FIXTURE LOCATED IN CLOSETS ARE TO BE CONTROLLED BY CLOSET DOOR JAMB SWITCH.
- 2 UNWIRELESS PICO CONTROL SWITCH IS TO BE SUPPLIED AND INSTALLED FOR SHADE CONTROL.
- 3 SUPPLY AND INSTALL LITRUM RADIO R42 SYSTEM TO PROVIDE PARTIAL LIGHTING CONTROL IN THE RESIDENTIAL UNITS. MASTER BEDROOM (DENOTED AS BED 1) AND ALL ROOMS WITH MORE THAN THREE (3) LIGHTING CONTROL ZONES ARE TO BE CONTROLLED BY THE LITRUM RADIO R42 SYSTEM. ALL ROOMS WITH THREE (3) LIGHTING CONTROL ZONES OR LESS ARE TO BE CONTROLLED BY LOCAL SWITCHES.
- 4 SUPPLY AND INSTALL CEILING MOUNTED JUNCTION BOX COMPLETE WITH CAPPED LIGHTING CIRCUIT WIRING FOR INSTALLATION OF TYPE LOCAL LIGHT FIXTURE.
- 5 REFLECT ARCHITECTURAL DRAWINGS AND ELEVATIONS FOR EXACT DIMENSION AND MOUNTING LOCATION OF LIGHT FIXTURE. TYPE L42. COORDINATE WITH MILLWORK CONTRACTOR PRIOR TO INSTALLATION.



1 TOWER A/B - ELECTRICAL LIGHTING PLAN - UNIT C
SCALE: 1/4" = 1'-0"

