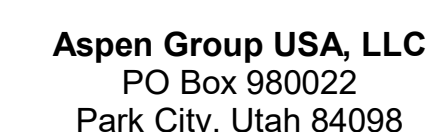


Olson Kundig

Project: **SOMMET BLANC**
300 Marsac Ave (B2 East Parcel)
City: Littleton, CO 80120



MEP Engineer
WSP USA
1001 Fourth Ave., Suite 3100
Seattle, WA 98154

no.	date	b
-----	------	---

IFC Set 3 of 3
5/31/2024

TOWER A/B ELECTRICAL
LIGHTING PLAN - UNIT D

E3.4.D

G. DRAWINGS ARE INTENDED TO SHOW GENERAL ARRANGEMENT, DESIGN, AND EXTENT OF WORK AND ARE DIAGRAMMATIC. DRAWINGS ARE NOT INTENDED TO SHOW EXACT LOCATIONS EXCEPT WHERE DIMENSIONS ARE SHOWN. ELECTRICAL WORK IS SHOWN ON PLANS IN STANDARD SYMBOLS. CONTRACTOR SHALL BE RESPONSIBLE FOR THE CORRELATION AND COMMENCEMENT WITH WORK. VERIFY MEASUREMENTS PERTAINING THERETO AND ASSUME RESPONSIBILITY THEREFOR. ANY SUBSTANTIAL DIFFERENCES BETWEEN THE CONTRACTOR'S INTERPRETATION OF THE DRAWINGS AND THE SUBMITTAL TO THE CONSTRUCTION MANAGER FOR CONSIDERATION BEFORE PROCEEDING WITH WORK.

H. WORK PERFORMED INCLUDES LABOR, MATERIALS, AND EQUIPMENT REQUIRED TO INSTALL ALL ELECTRICAL, ELECTRICAL CONTROL, AND COMMUNICATIONS SYSTEMS. CONTRACTOR PROVIDE EXIT SIGNS AND CONNECT EXIT SIGNS AND LUMINAIRES NOTED BY ARCHITECT TO ELECTRICAL POWER SOURCES NOT NOTICED ON PLANS.

I. REFER TO LUMINANCE SCHEDULE FOR LUMINANCE REQUIREMENTS.

J. FIXTURE CATALOG NUMBERS ARE SUBJECT TO CHANGE BY MANUFACTURER. VERIFY FIXTURE CATALOG NUMBERS AND MANUFACTURER'S SPECIFICATIONS FOR ALL FIXTURES.

K. VERIFY EQUIPMENT SIZES AND POWER REQUIREMENTS FOR EQUIPMENT PROVIDED BY OTHERS.

L. ELECTRICAL CONDUITS IN FINISHED SPACES SHALL BE CONCEALED. COORDINATE WITH OTHER TRADES AND USE CHASSES AND CEILING SPACES. LOCATIONS OF ELECTRICAL JUNCTION BOXES IN FINISHED SPACES SHALL BE APPROVED BY ARCHITECT PRIOR TO ROUTING.

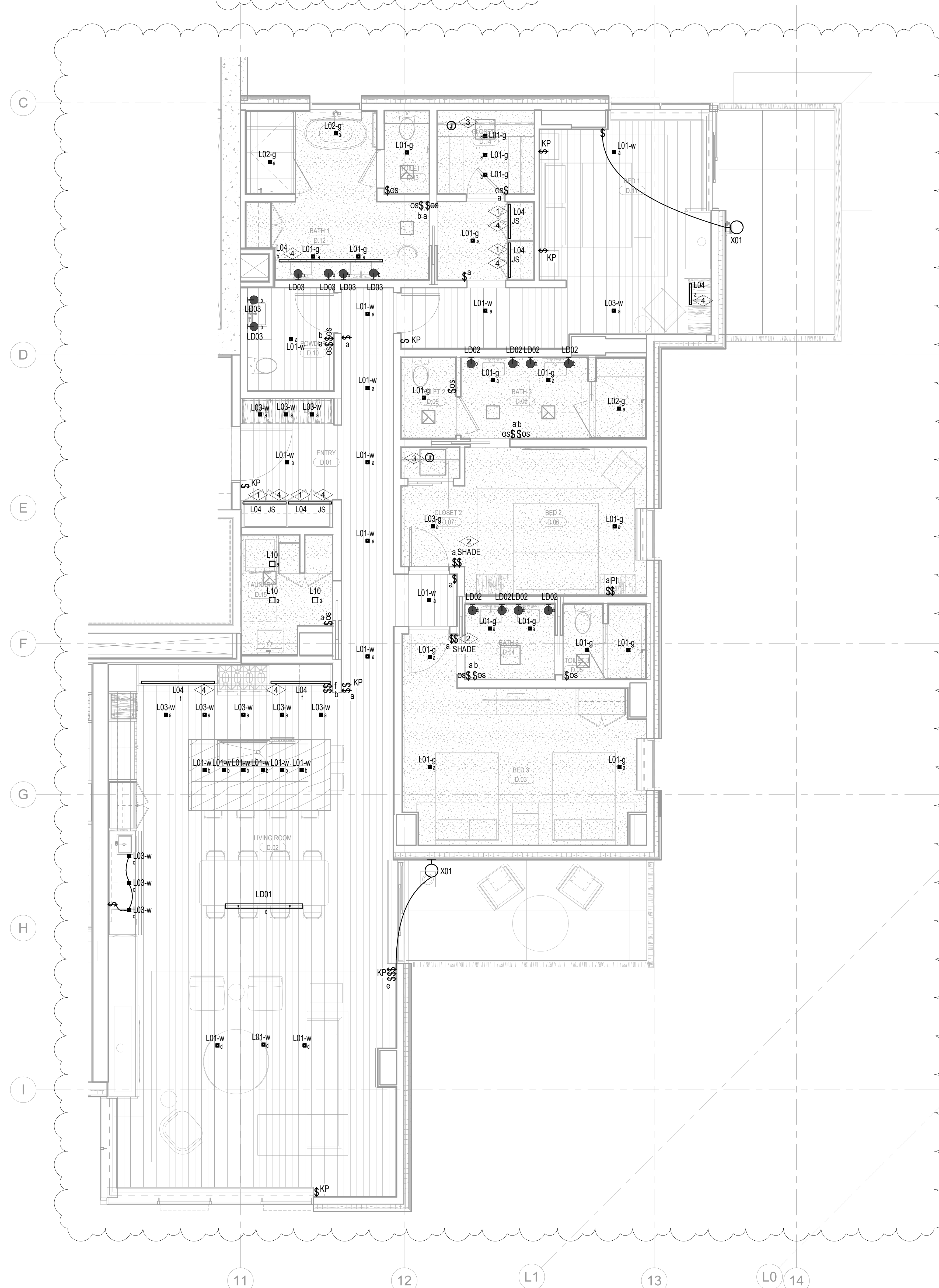
M. COORDINATE REMOTE DRYER MOUNTING LOCATIONS WITH ARCHITECT PRIOR TO ROUTING.

N. COORDINATE LUMINAIRE VOLTAGE WITH ARCHITECT AND OWN PRIOR TO PURCHASE, INSTALLATION AND TYPICAL FOR EACH LIGHT FIXTURE.

O. CONFIN WITH CLIENT AND OWNER ON UNIT CEILING TYPE FINISH UPDATES PRIOR TO COMMENCEMENT OF WORK.

NUMBERED NOTES:

1. LIGHT FIXTURE LOCATED IN CLOSETS ARE TO BE CONTROLLED BY CLOSET DOOR JAM SWITCH.
2. LUTRON WIRELESS PICO CONTROL SWITCH IS TO BE SUPPLIED AND INSTALLED FOR SHADE CONTROL.
3. SUPPLY AND INSTALL CEILING MOUNTED JUNCTION BOX COMPLETE WITH CAPPED LIGHTING CIRCUIT WIRING FOR INSTALLATION OF FOUR CLOSET LIGHT FIXTURES.
4. REFER TO ARCHITECTURAL DRAWINGS AND ELEVATIONS FOR EXACT DIMENSION AND MOUNTING LOCATION OF LIGHT FIXTURE TYPE 104, COORDINATE WITH MILLWORK CONTRACTOR PRIOR TO INSTALLATION.



1 TOWER A/B - ELECTRICAL LIGHTING PLAN - UNIT D
SCALE: 1/4" = 1'-0"

