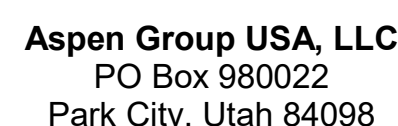


Olson Kundig

Project: **SOMMET BLANC**
3300 Marsac Ave (B2 East Parcel)



no. date b

IFC Set 3 of 3
5/31/2024

TOWER A/B ELECTRICAL
LIGHTING PLAN - UNIT E

E3.4.E

A. DRAWINGS ARE INTENDED TO SHOW GENERAL ARRANGEMENT, DESIGN, AND EXTENT OF WORK AND ARE DIAGRAMMATIC. DRAWINGS ARE NOT INTENDED TO SHOW EXACT LOCATIONS EXCEPT WHERE DIMENSIONS ARE SHOWN. ELECTRICAL WORK IS SHOWN ON PLANS USING STANDARD INDUSTRY SYMBOLS. BEFORE ORDERING MATERIALS OR COMMENCING WORK WITH WORK, VERIFY MEASUREMENTS PERTAINING THERETO AND ASSUME RESPONSIBILITY THEREFOR. ANY SUBSTANTIAL DIFFERENCES BETWEEN DRAWINGS AND CONDITIONS IN THE FIELD SHALL BE SUBMITTED TO THE CONSTRUCTION SUPERVISOR FOR CONSIDERATION. ALL WORK SHALL BE IN ACCORDANCE WITH WORK.

B. WORK PERFORMED INCLUDES LABOR, MATERIALS, AND EQUIPMENT REQUIRED TO INSTALL A COMPLETE ELECTRICAL SYSTEM AS INDICATED ON DRAWINGS AND SPECIFICATIONS. PROVIDE EXIST SIGNS AND CONNECT EXIST SIGNS AND LUMINAIRES NOTED AS EMERGENCY LIGHTS TO POWER SUPPLY AND CONTROL SYSTEMS.

C. REFER TO LUMINAIRE SCHEDULE FOR INFORMATION.

D. EXISTURE CATALOG NUMBERS ARE SUBJECT TO CHANGE BY MANUFACTURER. VERIFY EXISTURE CATALOG NUMBERS FOR ACCURACY.

E. VERIFY EQUIPMENT TYPES AND POWER REQUIREMENTS FOR EQUIPMENT PROVIDED BY OTHERS.

F. ELECTRICAL CONDITIONS IN FINISHED SPACES SHALL BE CONCEALED. COORDINATE WITH OTHERS AND USE OF ACCESS PANELS IN FINISHED SPACES. LOCATIONS OF ELECTRICAL JUNCTION BOXES IN FINISHED SPACES SHALL BE APPROVED BY ARCHITECT PRIOR TO ROUGH-IN.

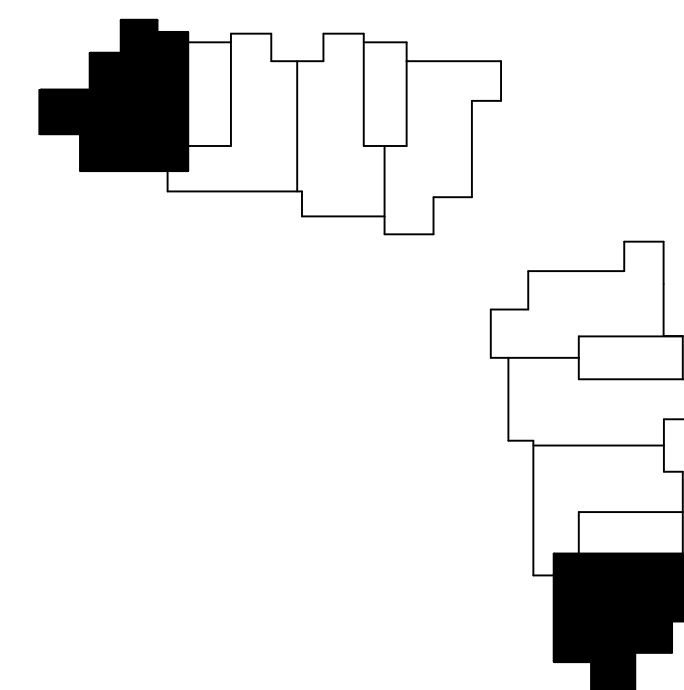
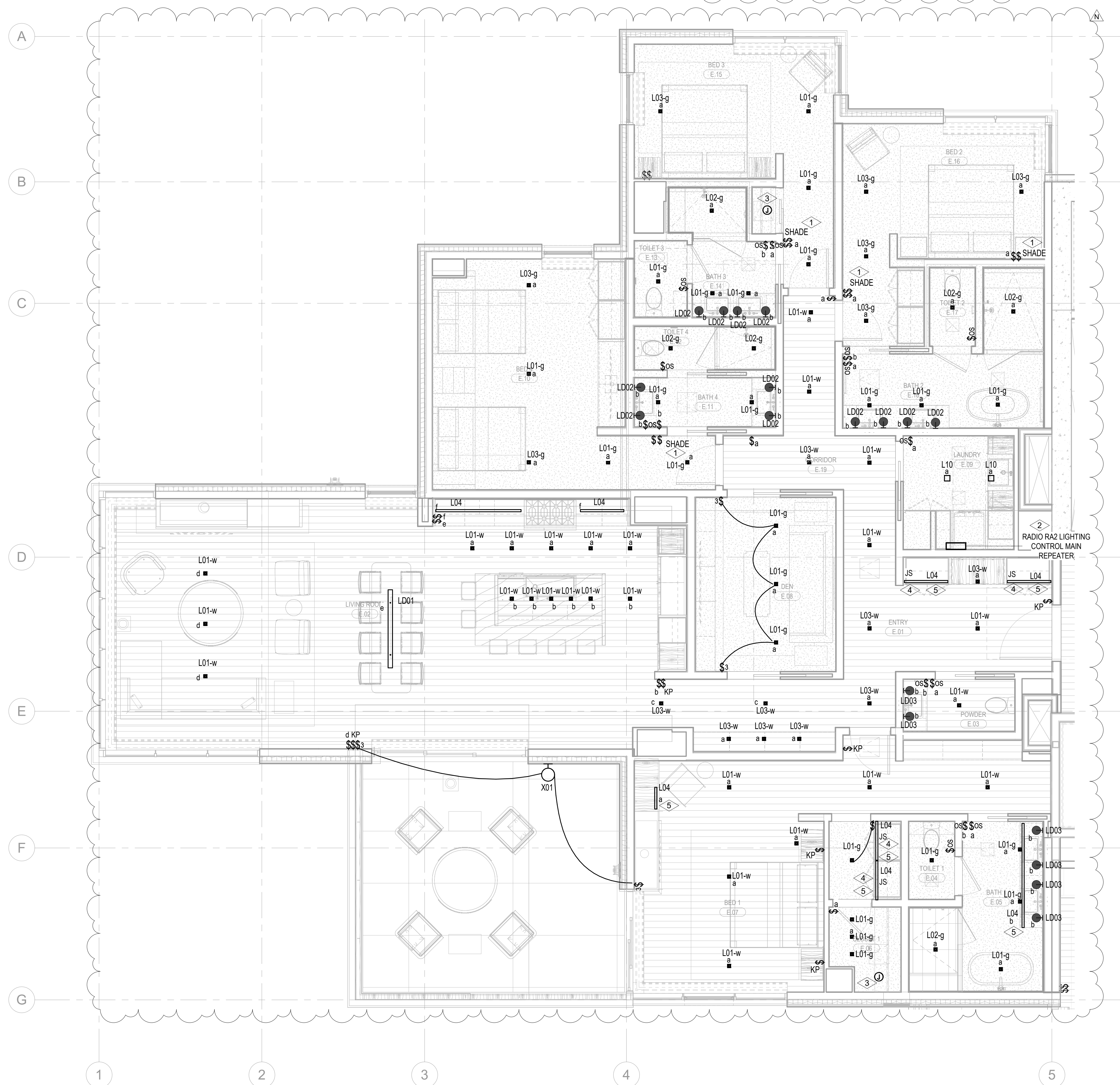
G. COORDINATE REMOTE DUTY MOUNTING LOCATIONS WITH ARCHITECT PRIOR TO ROUGH-IN.

H. COORDINATE LUMINAIRE VOLTAGE WITH ARCHITECT AND OWNER PRIOR TO PURCHASE AND INSTALLATION TYPE, FOR ALL-UNIT LIGHTING.

I. CONFIRM WITH CLIENT AND OWNER ON UNIT CEILING TYPE FINISH UPGRADES PRIOR TO ORDERING AND INSTALLATION.

#

- 2 LUTRON WIRELESS PICO CONTROL SWITCH IS TO BE SUPPLIED AND INSTALLED FOR SHADE CONTROL.
- 3 SUPPLY AND INSTALL LUTRON RADIO RAZ SYSTEM TO PROVIDE PARTIAL LIGHTING CONTROL IN THE RESIDENTIAL UNITS. MASTER BEDROOM (DENOTED AS BED 1) AND ALL ROOMS WITH MORE THAN THREE (3) LIGHTING CONTROL ZONES ARE TO BE
- 4 CONTROLLED BY LUTRON RADIO RAZ SYSTEM. ALL ROOMS WITH THREE (3) LIGHTING CONTROL ZONES OR LESS ARE TO BE CONTROLLED BY LOCAL DIMMER.
- 5 SUPPLY AND INSTALL CEILING MOUNTED JUNCTION BOX COMPLETE WITH CAPPED LIGHTING CIRCUIT WIRING FOR INSTALLATION OF FUTURE CLOSET LIGHT FIXTURE.
- 6 LIGHT FIXTURE LOCATED IN CLOSETS ARE TO BE CONTROLLED BY CLOSET DOOR JAM SWITCH.
- 7 REFER TO ARCHITECTURAL DRAWINGS AND ELEVATIONS FOR EXACT DIMENSIONS AND MOUNTING LOCATION OF LIGHT FIXTURE TYPE, LUX, COORDINATE WITH MILLWORK CONTRACTOR PRIOR TO INSTALLATION.



0 1' 2' 3' 4' 8' 12

1 TOWER A/B - ELECTRICAL LIGHTING PLAN - UNIT E
SCALE: 1/4" = 1'-0"

SCALE: 1/4" = 1'-0"