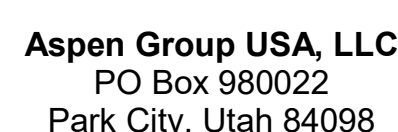


Olson Kundig

Project: **SOMMET BLANC**
300 Marsac Ave (B2 East Parcel)
Park City, Utah 84060



MEP Engineer
WSP USA
1001 Fourth Ave., Suite 3100
Seattle, WA 98154

principal architect _____
project manager _____
drawn by _____
checked by _____ Checker _____
job no. _____
date 5/31/2024

N	05/21/2025	ASI 011
2	5/31/2024	IFC 3

no.	date	
-----	------	--

IFC Set 3 of 3
5/31/2024

TOWER A/B ELECTRICAL
LIGHTING PLAN - UNIT F

E3.4.F

A. DRAWINGS ARE INTENDED TO SHOW GENERAL ARRANGEMENT, DESIGN AND EXTENT OF WORK AND ARE DIAGRAMMATIC. DRAWINGS ARE NOT INTENDED TO SHOW EXACT LOCATIONS EXCEPT WHERE DIMENSIONS ARE SHOWN. ELECTRICAL WORK IS SHOWN ON PLANS USING STANDARD INDUSTRY SYMBOLS. BEFORE ORDERING MATERIALS OR COMMENCEMENT WITH WORK, VERY MEASUREMENTS PERTAINING THERETO AND ASSUME RESPONSIBILITY THEREOF. ANY SUBSTANTIAL DIFFERENCES BETWEEN DRAWINGS AND CONDITIONS IN THE FIELD SHALL BE SUBMITTED TO THE CONSTRUCTION MANAGER FOR CONSIDERATION. THE CONTRACTOR SHALL BE RESPONSIBLE FOR ALL WORK PERFORMED INCLUDES LABOR, MATERIALS AND EQUIPMENT REQUIRED TO INSTALL A COMPLETE ELECTRICAL SYSTEM AS INDICATED ON DRAWINGS AND SPECIFICATIONS.

C. PROVIDE EXIST LINES AND CONNECT EXIST SYSTEMS AND LUMINAIRES NOTED AS EMERGENCY OR EMERGENCY POWER SUPPLY ON PLANS.

D. REFER TO LUMINAIRE SCHEDULE FOR INFORMATION.

E. FIXTURE CATALOG NUMBERS ARE SUBJECT TO CHANGE BY MANUFACTURER. VERIFY FIXTURE CATALOG NUMBERS FOR ACCURACY.

F. DESCRIBE SIZES AND POWER REQUIREMENTS FOR EQUIPMENT PROVIDED BY OTHERS.

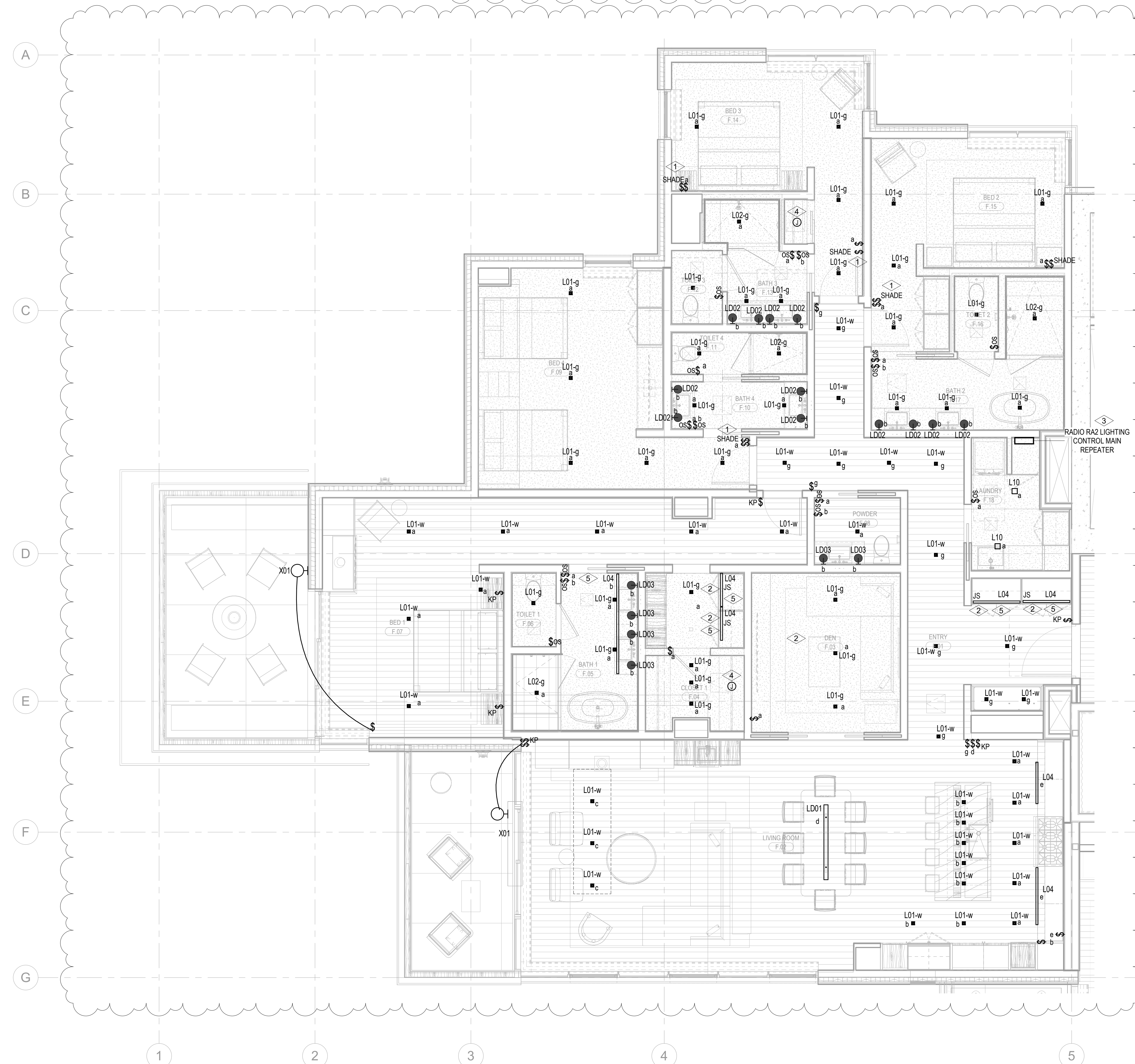
G. ELECTRICAL CONDUITS IN FINISHED SPACES SHALL BE LOCATED, COORDINATE WITH MECHANICAL AND USE OF FINISHED SPACES. LOCATIONS OF ELECTRICAL JUNCTION BOXES IN FINISHED SPACES SHALL BE APPROVED BY ARCHITECT PRIOR TO POUR-IN.

H. COORDINATE REMOTE DRYER MOUNTING LOCATIONS WITH ARCHITECT PRIOR TO ROUGH IN.

I. COORDINATE LUMINAIRE VOLTAGE WITH ARCHITECT AND OWNER PRIOR TO PURCHASE AND INSTALLATION TYPICAL FOR ALL UNIT LIGHTING.

J. CONFIRM WITH CLIENT AND OWNER ON CEILING TYPICAL FINISH UPDATES PRIOR TO PURCHASE AND INSTALLATION.

- 1 LUTRON WIRELESS PICO CONTROL SWITCH IS TO BE SUPPLIED AND INSTALLED FOR SHADE CONTROL.
- 2 LIGHT FIXTURE LOCATED IN CLOSET ARE TO BE CONTROLLED BY CLOSET DOOR JAMB SWITCH.
- 3 SUPPLY AND INSTALL LUTRON RADIO RA2 SYSTEM TO PROVIDE PANTAL LIGHTING CONTROL IN THE RESIDENTIAL UNITS. MASTER BEDROOM (DENOTED AS B2) AND ALL ROOMS WITH MORE THAN THREE (3) LIGHTING CONTROL ZONES ARE TO BE CONTROLLED BY THE LUTRON RADIO RA2 SYSTEM. ALL ROOMS WITH THREE (3) LIGHTING CONTROL ZONES OR LESS ARE TO BE CONTROLLED BY LOCAL SWITCHES.
- 4 SUPPLY AND INSTALL CEILING MOUNTED JUNCTION BOX COMPLETE WITH CAPPED LIGHTING CIRCUIT WIRING FOR INSTALLATION OF TYPE LOCAL CONTROL LIGHT FIXTURE.
- 5 REVISION ARCHITECTURE OF PLAN AND ELEVATIONS FOR EXACT DIMENSION AND MOUNTING LOCATION OF LIGHT FIXTURE. FUTURE LOC. COORDINATE WITH MILLWORK CONTRACTOR PRIOR TO INSTALLATION.



1 TOWER A/B - ELECTRICAL LIGHTING PLAN - UNIT F
SCALE: 1/4" = 1'-0"

