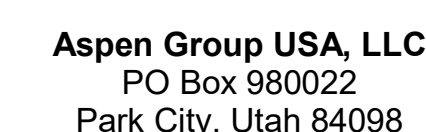


159 South Jackson St, Suite 600  
Seattle, Washington 98104 USA

Olson Kundig

project;  
**SOMMET BLANC**  
33300 Marsac Ave (B2 East Parcel)  
Grand Ciel, Utah 84080



Pool Consultant  
**Cloward H2O**  
2696 N University Ave, Suite 290  
Provo, UT 84604

Landscape Architect  
**EPG Design**  
6949 South High Tech Drive, Suite 10  
Midvale, Utah 84047

Specifications Writer  
**Friday Group**  
88 Mainelli Road  
Middlebury, VT

Code Consultant  
**Holmes**  
600 1st Avenue, Suite 200A  
Seattle, WA 98104

Fire Protection Engineer  
**Jensen Hughes**  
One Research Drive, Suite 305C  
Westborough, MA 01581

Vertical Transportation Consultant  
**Lerch Bates**  
19515 North Creek Parkway, Suite 3  
Bothell, WA 98011

**Structural Engineer**  
**Magnusson Klemencic Associates**  
1301 5th Ave., Suite 3200  
Seattle, WA 98101

Lighting Designer  
O-  
1319 SE MLK Blvd, Suite 210  
Portland, Oregon 97219

**Building Envelope Consultant**  
**RDH**  
2101 N 34th St  
Seattle, WA 98103

**Accessibility Consultant**  
**Studio Pacifica**  
2144 Westlake Ave N, Suite F  
Seattle, WA 98109

MEP Engineer  
**WSP USA**  
1001 Fourth Ave., Suite 3100  
Seattle, WA 98154

principal architect \_\_\_\_\_  
project manager \_\_\_\_\_  
drawn by \_\_\_\_\_  
checked by Checker  
job no. \_\_\_\_\_  
date 5/31/2024

revisions

N	05/21/2025	ASI 011
D	05/21/2024	ISO 2

no.	date	
-----	------	--

IFC Set 3 of 3  
5/31/2024

TOWER A/B ELECTRICAL  
LIGHTING PLAN - UNIT H

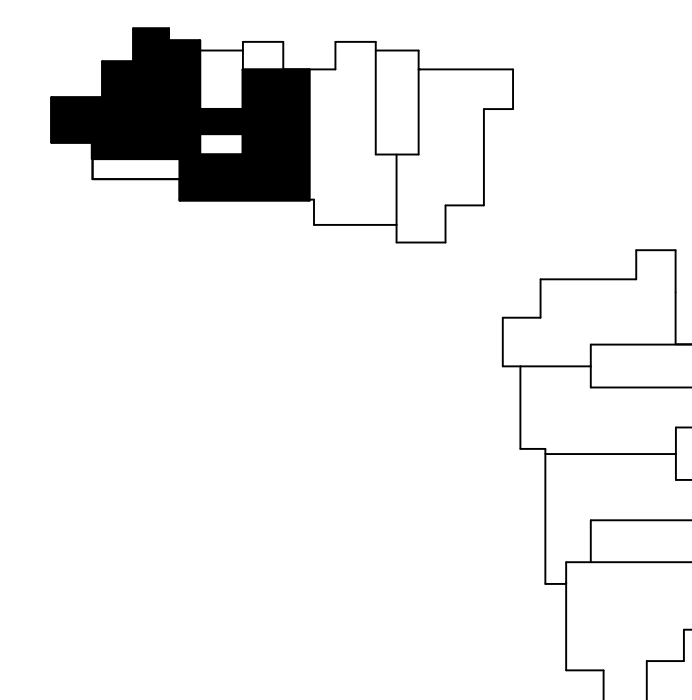
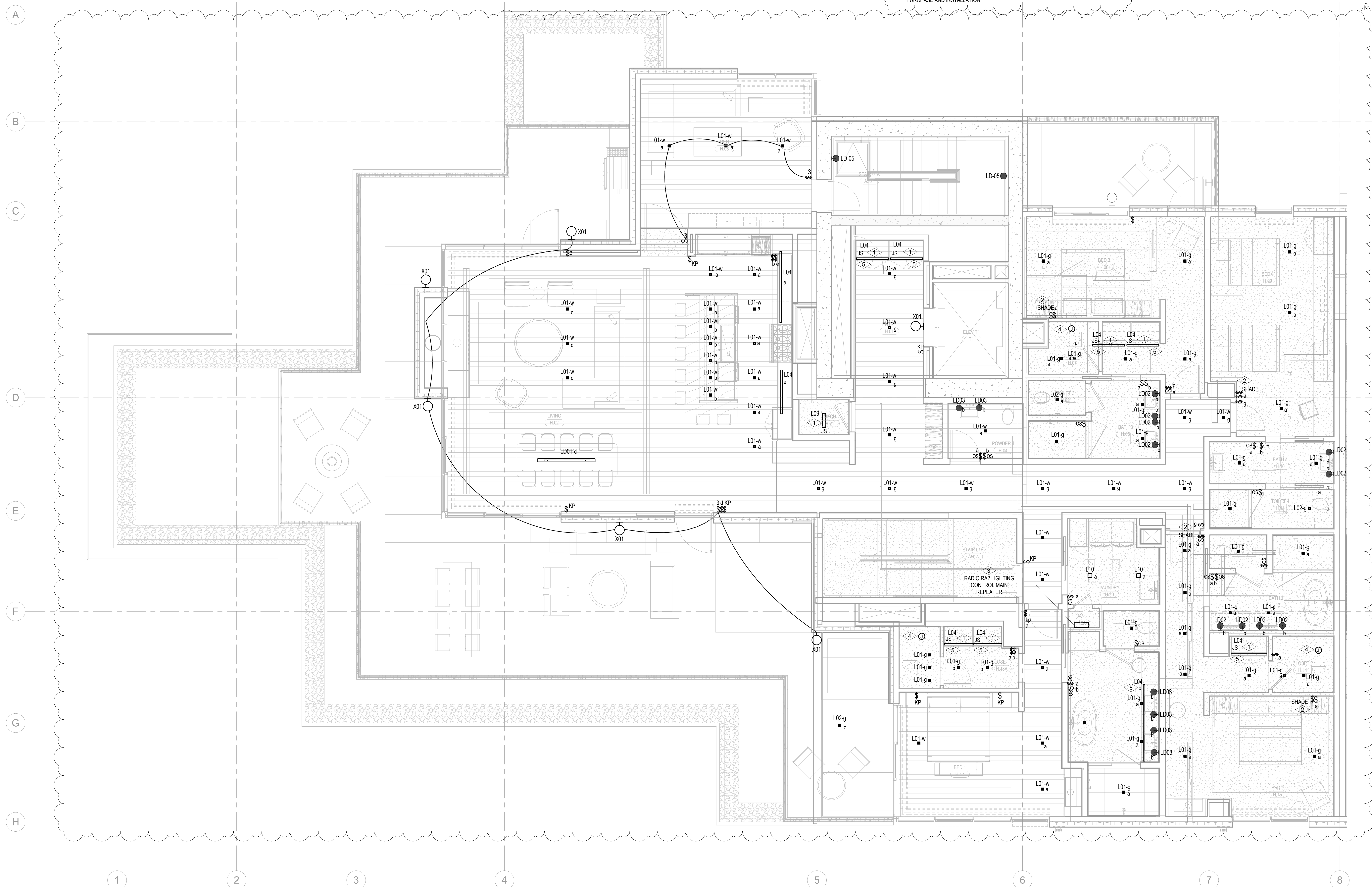
### E3.4.H

**SHEET NOTES:**

- A. DRAWINGS ARE INTENDED TO SHOW GENERAL ARRANGEMENT, DESIGN AND EXTENT OF WORK AND ARE DIAGRAMMATIC. DRAWINGS ARE NOT INTENDED TO SHOW EXACT LOCATIONS EXCEPT WHERE DIMENSIONS ARE SHOWN. ELECTRICAL WORK IS SHOWN ON PLANS USING STANDARD INDUSTRY SYMBOLS. BEFORE ORDERING MATERIALS OR COMMITMENT WITH WORK, VERY MEASUREMENTS PERTAINING THERETO AND ASSUME RESPONSIBILITY THEREFOR. ANY SUBSTANTIAL DIFFERENCES BETWEEN DRAWINGS AND CONDITIONS IN THE FIELD SHALL BE SUBMITTED TO THE CONSTRUCTION SUPERVISOR FOR CONSIDERATION. THE CONTRACTOR SHALL BE RESPONSIBLE FOR WORK PERFORMED INCLUDES LABOR, MATERIALS, AND EQUIPMENT REQUIRED TO INSTALL A COMPLETE ELECTRICAL SYSTEM AS INDICATED ON DRAWINGS AND SPECIFICATIONS. PROVIDE EXIST SIGNS AND CONNECT EXIST SIGNS AND MATERIALS AS EMERGENCY TO EMERGENCY POWER SUPPLY AND SIGNALS. THE CONTRACTOR SHALL BE RESPONSIBLE FOR THE REFERENCE TO LIGNATURE SCHEDULE FOR INFORMATION.
- B. EXISTURE CATALOG NUMBERS ARE SUBJECT TO CHANGE BY MANUFACTURER. VERIFY ALL MATERIALS AND EQUIPMENT ARE AVAILABLE AND MEET THE REQUIREMENTS OF THE SPECIFICATIONS. VERIFY EQUIPMENT TYPES AND POWER REQUIREMENTS FOR EQUIPMENT PROVIDED BY OTHERS.
- C. ELECTRICAL CONDITIONS IN FINISHED SPACES SHALL BE COORDINATED WITH OTHER TRADES AND USE CHANGES AND CEILING SPACES. LOCATIONS OF ELECTRICAL JUNCTION BOXES IN FINISHED SPACES SHALL BE APPROVED BY ARCHITECT PRIOR TO ROUGH-IN.
- D. COORDINATE REMOTE FLOOR MOUNTING LOCATIONS WITH ARCHITECT PRIOR TO ROUGH-IN.
- E. COORDINATE LUMINAIRE VOLTAGE WITH ARCHITECT AND OWNER PRIOR TO PURCHASE AND INSTALLATION TYPICAL FOR ALL LIGHT FIXTURES.
- F. DESIGN WITH CERTAIN MATERIALS ON CEILING TYPES FINISH UPGRADES PRIOR TO PURCHASE AND INSTALLATION.

**NUMBERED NOTES:**

- 1 LIGHT FIXTURE LOCATED IN CLOSETS ARE TO BE CONTROLLED BY CLOSET DOOR JAMB SWITCH.
- 2 LUTRON WIRELESS PICO CONTROL SWITCH IS TO BE SUPPLIED AND INSTALLED FOR SHADE CONTROL.
- 3 SUPPLY AND INSTALL LUTRON RADIO RAS SYSTEM TO PROVIDE PARTIAL LIGHTING IN THE RESIDENTIAL LUNES. MASTER BEDROOM (DESIGNATED BED 1) AND ALL ROOMS WITH MORE THAN THREE (3) LIGHTING CONTROL ZONES ARE TO BE CONTROLLED BY THE LUTRON RADIO RAS SYSTEM. ALL ROOMS WITH THREE (3) LIGHTING CONTROL ZONES OR LESS ARE TO BE CONTROLLED BY LOCAL DIMMERS.
- 4 SUPPLY AND INSTALL CEILING MOUNTED JUNCTION BOX COMPLETE WITH CAPPED LIGHTING CIRCUIT WIRING FOR INSTALLATION OF FUTURE CLOSET LIGHT FIXTURE.
- 5 PROVIDE TO ARCHITECTURAL DRAWINGS AND ELEVATIONS FOR EXACT DIMENSION AND MOUNTING LOCATION OF LIGHT FIXTURE TYPE, LOCATION, COORDINATE WITH MILLWORK CONTRACTOR PRIOR TO INSTALLATION.



1 TOWER A/B - ELECTRICAL LIGHTING PLAN - UNIT H  
SCALE: 1/4" = 1'-0"

SCALE: 1/4" = 1'-0"