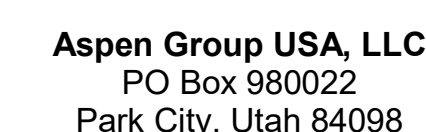




159 South Jackson St, Suite 800
Seattle, Washington 98104 USA

Olson Kundig

project;
SOMMET BLANC
33300 Marsac Ave (B2 East Parcel)
Bldg. Code: 1144 84 000



MEP Engineer
WSP USA
1001 Fourth Ave., Suite 3100
Seattle, WA 98154

principal architect _____
project manager _____
drawn by _____
checked by Checker
job no. _____
date 05/31/2024

revisions

| | | |
|---|------------|---------|
| N | 05/21/2025 | ASI 011 |
| 2 | 05/24/2024 | ISS 2 |

| no. | date | |
|-----|------|--|
|-----|------|--|

IFC Set 3 of 3
05/31/2024

TOWER C ELECTRICAL
LIGHTING PLAN - UNIT L

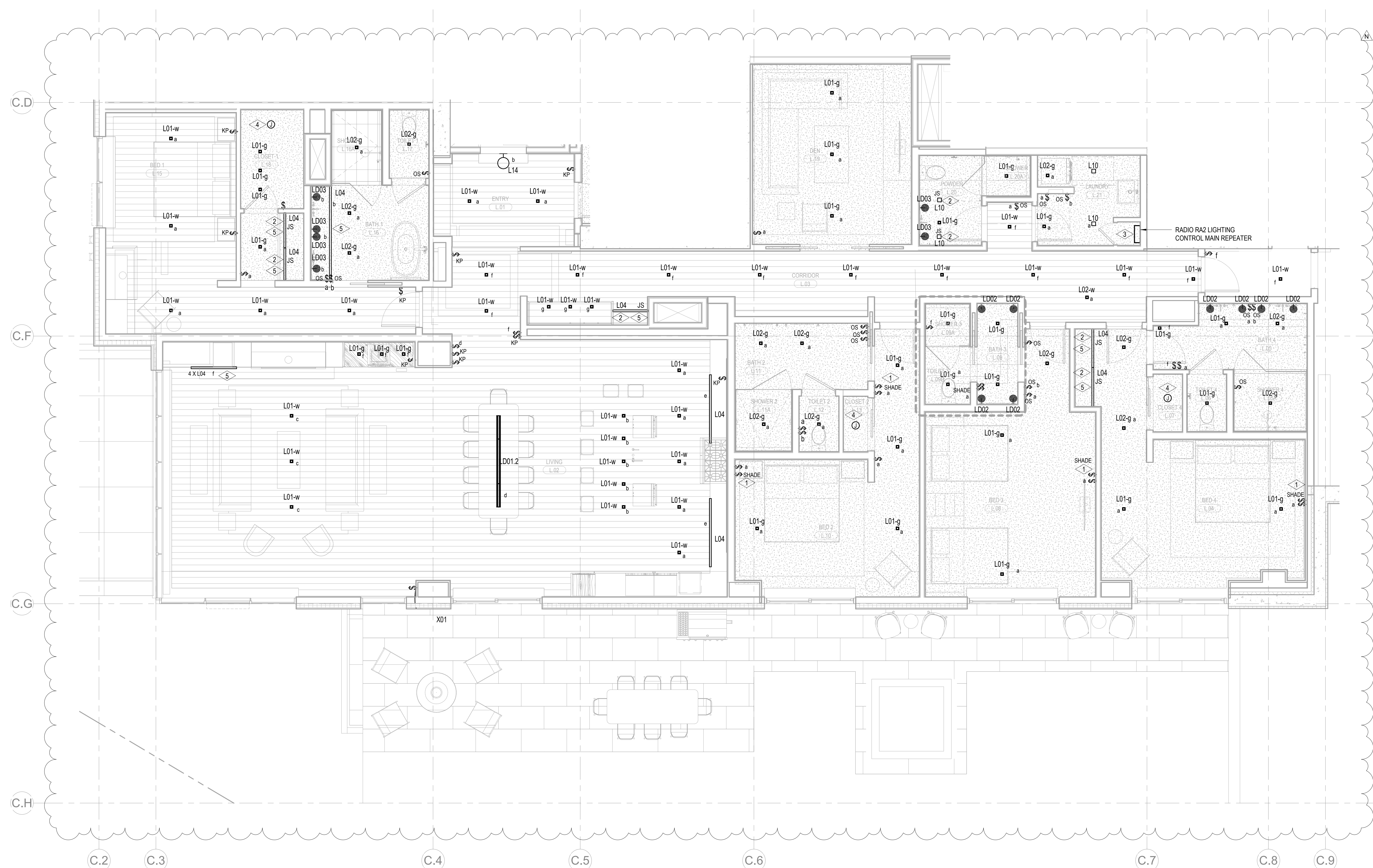
E3.4.L

SHEET NOTES:

- A DRAWINGS ARE INTENDED TO SHOW GENERAL ARRANGEMENT, DESIGN, AND EXTENT OF WORK AND ARE DIAGRAMMATIC. DRAWINGS ARE NOT INTENDED TO SHOW EXACT LOCATIONS EXCEPT WHERE DIMENSIONS ARE SHOWN. ELECTRICAL WORK IS SHOWN ON PLANS USING THE 2018 NATIONAL ELECTRICAL CODE (NEC) AND THE 2018 NATIONAL FIRE PROTECTION ASSOCIATION (NFPA) 70B. VERIFY MEASUREMENTS PERTAINING THERETO AND ASSUME RESPONSIBILITY THEREFOR. ANY SUBSTANTIAL DIFFERENCES BETWEEN DRAWINGS AND CONDITIONS IN THE FIELD SHALL BE SUBMITTED TO THE CONSTRUCTION MANAGER FOR CONSIDERATION BEFORE PROCEEDING WITH WORK.
- B POWER PERFORMANCE INCLUDES LABOR, MATERIALS, AND EQUIPMENT REQUIRED TO INSTALL A 120/208V 3-PHASE ELECTRICAL SERVICE TO THE BUILDING. PROVIDE EXISTING AND CONNECT EXIST SIGNS AND LUMINAIRES NOTED AS EMERGENCY TO EMERGENCY POWER SOURCE AS INDICATED ON PLANS.
- C REFER TO LUMINAIRE SCHEDULE FOR LUMINAIRE SPECIFICATIONS AND POWER REQUIREMENTS. FIXTURE CATALOG NUMBERS ARE SUGGESTED BY MANUFACTURER. VERIFY FIXTURE CATALOG NUMBERS FOR ACCURACY.
- D VERIFY EQUIPMENT SIZES AND POWER REQUIREMENTS FOR EQUIPMENT PROVIDED BY OTHERS.
- E ELECTRICAL CONDUITS IN FINISHED SPACES SHALL BE CONCEALED. COORDINATE WITH OTHER TRADES AND MECHANICAL CONTRACTORS. THE LOCATION OF ELECTRICAL JUNCTION BOXES IN FINISHED SPACES SHALL BE APPROVED BY ARCHITECT PRIOR TO ROUGH-IN.
- F COORDINATE REMOTE FORT MOUNTING LOCATIONS WITH ARCHITECT PRIOR TO ROUGH-IN. COORDINATE LUMINAIRE VOLTAGE WITH ARCHITECT AND OWNER PRIOR TO PURCHASE AND INSTALLATION TYPICAL FOR ALL LIGHT FIXTURING.
- G CONSULT WITH CLIENT AND OWNER ON CEILING TYPE FINISH UPDATES PRIOR TO PURCHASE AND INSTALLATION.

NUMBERED NOTES:

- 1 LUTRON WIRELESS PICO CONTROL SWITCH IS TO BE SUPPLIED AND INSTALLED FOR SHADE CONTROL.
2 LIGHT FIXTURE LOCATION IN CLOSETS ARE TO BE CONTROLLED BY 1/4 CLOSET DOOR JAM SWITCH.
3 SUPPLY AND INSTALL LUTRON RADIO RAZ SYSTEM TO PROVIDE PARTIAL LIGHTING CONTROL IN THE
4 RESIDENTIAL UNITS. MASTER BEDROOM (DENOTED AS BED 1) AND ALL ROOMS WITH MORE THAN THREE (3)
5 LIGHTING CONTROL ZONES ARE TO BE CONTROLLED BY THE LUTRON RADIO RAZ SYSTEM. ALL ROOMS WITH
THREE (3) LIGHTING CONTROL ZONES OR LESS ARE TO BE CONTROLLED BY LOCAL DIMMERS.
SUPPLY AND INSTALL CEILING MOUNTED JUNCTION BOX COMPLETE WITH CAPPED LIGHTING CIRCUIT WIRING
FOR INSTALLATION OF FUTURE 0-10VDC LIGHT FIXTURES.
REFER TO ARCHITECTURAL DRAWINGS AND ELEVATIONS FOR EXACT DIMENSION AND MOUNTING LOCATION ON
LIGHT FIXTURE TYPE 104. COORDINATE WITH MILLWORTH CONTRACTOR PRIOR TO INSTALLATION.



1 TOWER C - ELECTRICAL LIGHTING UNIT PLAN - L
SCALE: 1/4" = 1'-0"

