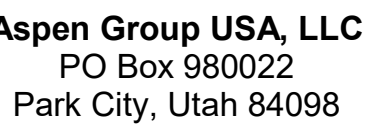


# Olson Kundig

**SOMMET BLANC**  
9300 Marsac Ave (B2 East Parcel)  
Park City, Utah 84060



**Howard H20**  
96 N University Ave, Suite 290  
Provo, UT 84604

**3D Design**  
49 South High Tech Drive, Suite 100  
Pleasantville, Utah 84047

**Day Group**  
Mainelli Road  
Middlebury, VT

de Consultant  
lmes  
0 1st Avenue, Suite 200A  
attle, WA 98104

**Protection Engineer**  
**nson Hughes**  
Research Drive, Suite 305C  
Westborough, MA 01581

**Arch Bates**  
515 North Creek Parkway, Suite 304  
Bellingham, WA 98011

**Structural Engineer**  
**Ingusson Klemencic Associates**  
101 5th Ave, Suite 3200  
Seattle, WA 98101

19 SE MLK Blvd, Suite 210  
Portland, Oregon 97219

**Building Envelope Consultant**  
**ENH**  
 101 N 34th St  
 Seattle, WA 98103

**Audio Pacifica**  
44 Westlake Ave N, Suite F  
Seattle, WA 98109

PE Engineer  
 SP USA  
 01 Fourth Ave., Suite 3100  
 Seattle, WA 98154

principal architect \_\_\_\_\_  
project manager \_\_\_\_\_  
drawn by \_\_\_\_\_  
checked by Checker  
job no. \_\_\_\_\_  
date 05/31/2024

Revisions:

N	05/21/2025	ASI 011
2	05/24/2024	IFC 3

no. date b.

IFC Set 3 of 3  
05/31/2024

POWER C ELECTRICAL  
LIGHTING PLAN - UNIT R

### E3.4.R

DRAWINGS ARE INTENDED TO SHOW GENERAL ARRANGEMENT, DESIGN, AND EXTENT OF WORK AND ARE DIAGRAMMATIC. DRAWINGS ARE NOT INTENDED TO SHOW EXACT LOCATIONS OF WORK. DIMENSIONS SHALL BE SHOWN ON PLANS USING THE STANDARD ELECTRICAL SYMBOLS. BEFORE ORDERING MATERIALS OR COMMENCEMENT WITH WORK, VERY MEASUREMENTS PERTAINING THERE TO AND ASSUME RESPONSIBILITY FOR THE SAME. ANY SUBSTANTIAL DEVIATIONS FROM THE DRAWINGS AND CONDITIONS IN THE FIELD SHALL BE SUBMITTED TO THE CONSTRUCTION MANAGER FOR CONSIDERATION BEFORE PROCEEDING WITH WORK.

B. WORK PERFORMED INCLUDES LABOR, MATERIALS, AND EQUIPMENT REQUIRED TO INSTALL A COMPLETE ELECTRICAL SYSTEM AS INDICATED ON DRAWINGS AND SPECIFICATIONS.

C. PROVIDE EXIT SIGNS AND CONNECT EXISTING SIGNS AND LUMINAIRES NOTED AS EMERGENCY TO EXISTING ELECTRICAL SOURCE AND WIRING.

D. REFERENCE LUMINAIRE SCHEDULE FOR INFORMATION.

E. FIXTURE CATALOG NUMBERS ARE SUBJECT TO CHANGE BY MANUFACTURER. VERIFY FIXTURE CATALOG NUMBERS AND SPECIFICATIONS WITH MANUFACTURER.

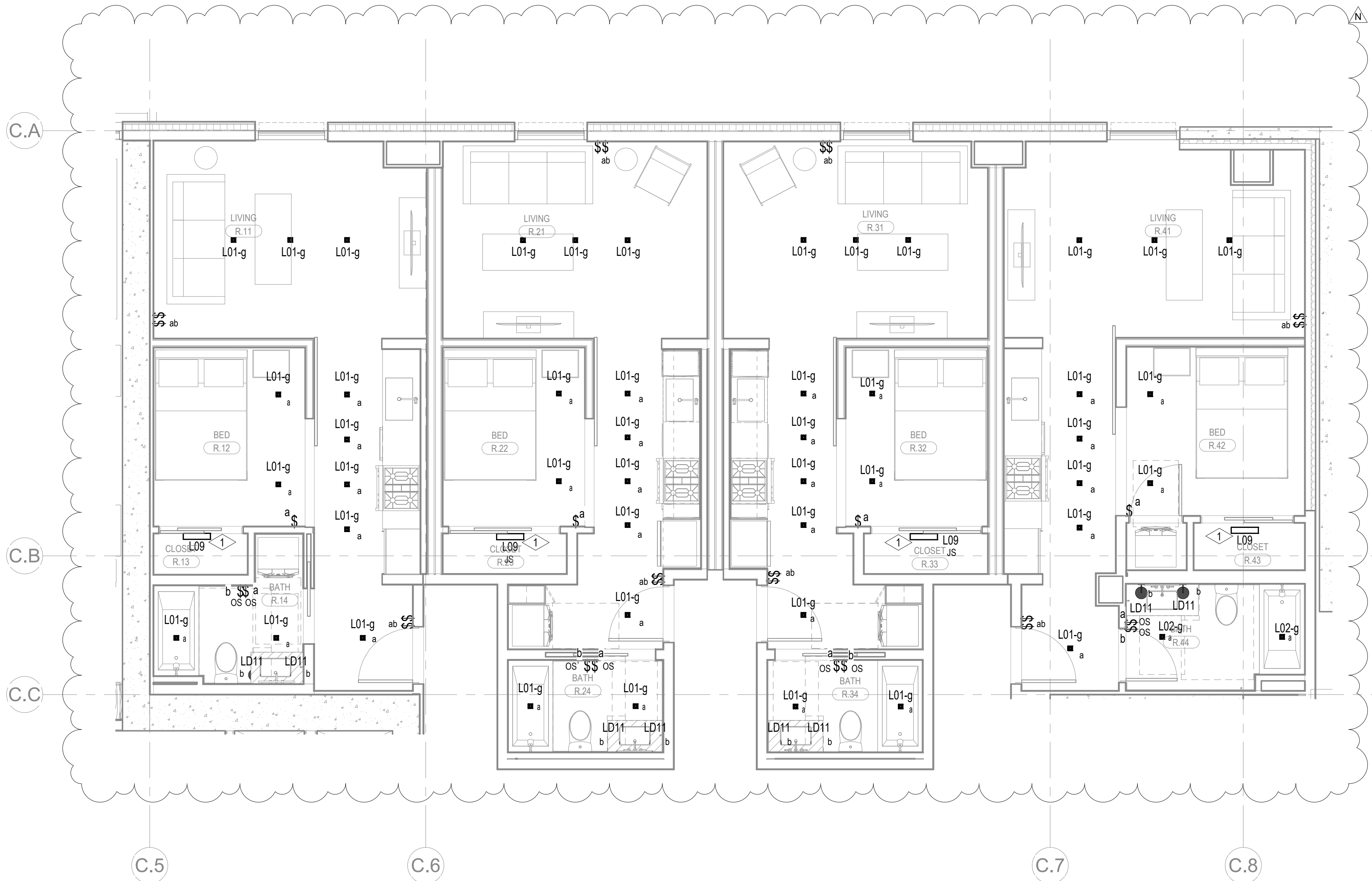
F. VERIFY EQUIPMENT SIZES AND POWER REQUIREMENTS FOR EQUIPMENT PROVIDED BY OTHERS.

G. ELECTRICAL CONDUITS IN FINISHED SPACES SHALL BE CONCEALED. COORDINATE WITH OTHER TRADES AND USE CHASES AND CEILING SPACES. LOCATIONS OF ELECTRICAL JUNCTION BOXES IN FINISHED SPACES SHALL BE APPROVED BY ARCHITECT PRIOR TO ROUGH-IN.

H. COORDINATE REMOTE REMOTE MOUNTING LOCATIONS WITH ARCHITECT PRIOR TO ROUGH-IN. COORDINATE LUMINAIRE VOLTAGE WITH ARCHITECT AND OWNER PRIOR TO PURCHASE AND INSTALLATION TYPE FOR ALL UNIT LIGHTING.

I. OBTAIN WIRELESS AND WIRELESS CLOUD CEILING TYPE FINISHES AND COORDINATE PRIOR TO PURCHASE AND INSTALLATION.

1 LIGHT FIXTURE LOCATED IN CLOSETS ARE TO BE CONTROLLED BY CLOSET DOOR JAM SWITCH



1 TOWER C - ELECTRICAL LIGHTING UNIT PLAN - R

