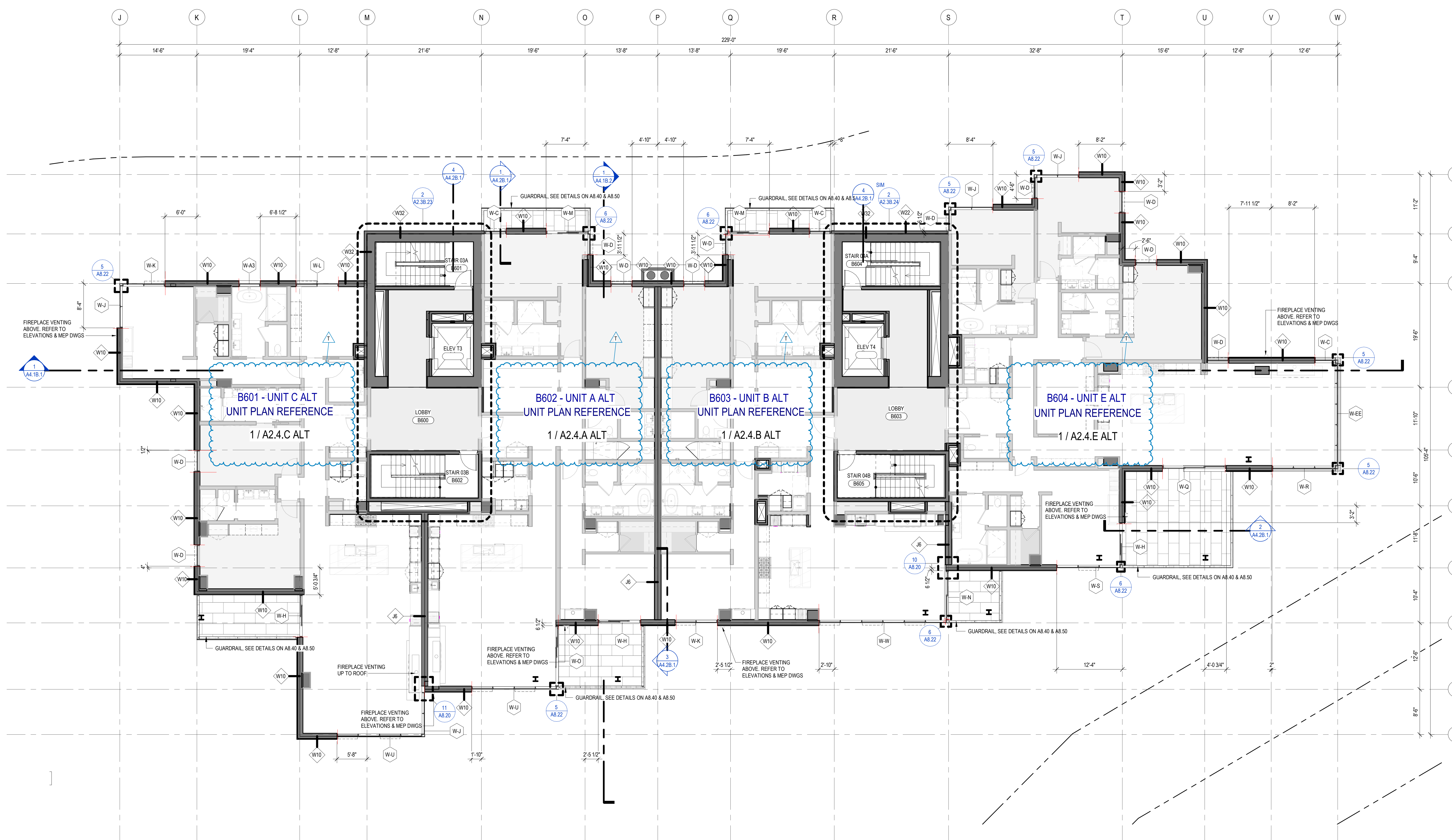


PLAN GENERAL NOTES

1. DIMENSIONS ARE TO FACE OF STUD OF EXTERIOR WALLS, CORRIDOR WALLS & INTERIOR WALLS, UNO
2. DIMENSIONS ARE TO CENTERLINE OF DEMISING WALLS, UNO
3. ALL EXPOSED STRUCTURAL STEEL TO RECEIVE 1 SET INTUMESCENT PAINTING, UNO
4. AT FRAMED EXTERIOR WALLS, FRAMING TO BE SHOT BACK 8" FROM FACE OF CONCRETE TO ALLOW FOR FLUSH ALIGNMENT OF SHEATHING TO EDGE OF SLAB, UNO.
5. CASEWORK DIMENSIONS ARE TO FACE OF FINISH, UNO
6. SEE SHEETS A0.10 AND A0.11 FOR ASSEMBLIES.
7. ALL CORRIDOR WALLS ARE TYPE E6, UNO.
8. ALL DEMISING WALLS ARE TYPE A6, UNO.
9. ALL INTERIOR PARTITIONS ARE TYPE A6, UNO.
10. ALL FURRING ABOVE CONCRETE STRUCTURAL COLUMNS TYPE G1, UNO.
11. ALL VENT SHAFT WALLS ARE TYPE K4, UNO.
12. REFER TO LIFE SAFETY PLANS A0.30 - A0.34 FOR FULL EXTENT OF FIRE RATED WALLS.
13. UNIT FLOOR LAYOUTS ON SHEETS A2.44 - A2.49
14. ALL OWNER PARKING STALLS SHALL INCLUDE EV INFRASTRUCTURE.
15. REFER TO SHEET A0.08 FOR ANYS1 TYPE A ACCESSIBILITY REQUIREMENTS.
16. REFER TO SHEET A0.07 FOR ANYS1 TYPE A ACCESSIBILITY REQUIREMENTS.
17. REFER TO SHEET A0.06 FOR ADA PUBLIC SPACE ACCESSIBILITY REQUIREMENTS.
18. ALL SPECIAL EQUIPMENT LOCATED WITHIN ELEVATOR MECHANICAL EQUIPMENT ENCLOSURE.
19. CONTRACTOR TO COORDINATE WITH FLOORPLAN MANUFACTURER GUIDELINES FOR VENTING



1 TOWER B - LEVEL 6
SCALE: 1/8" = 1'-0"

