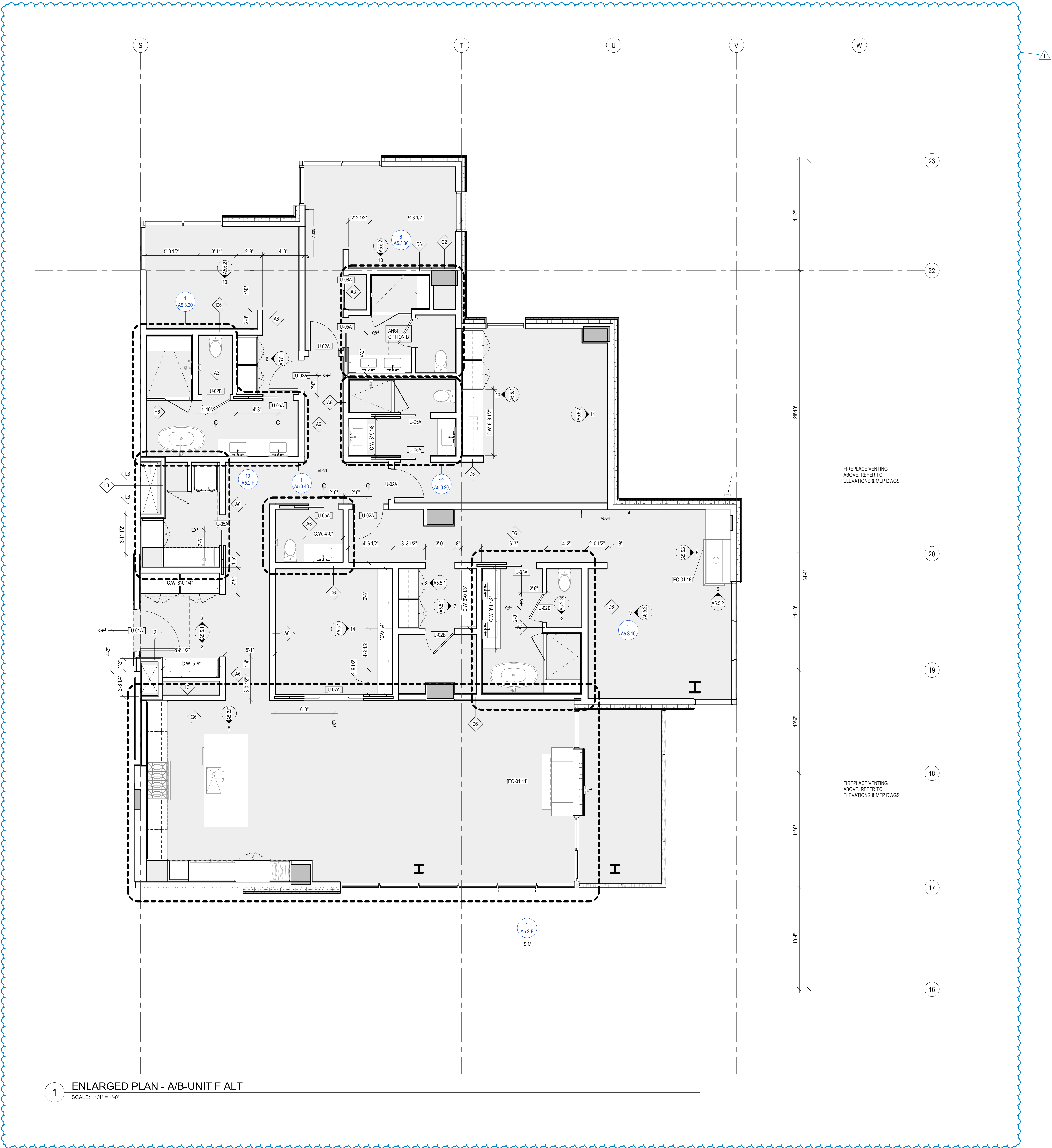
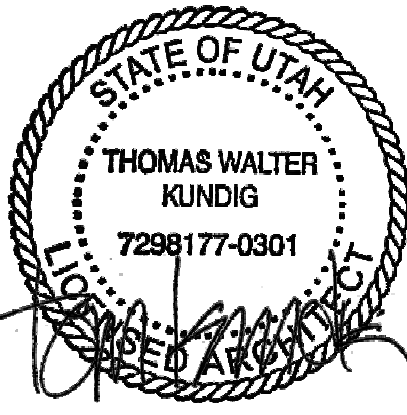
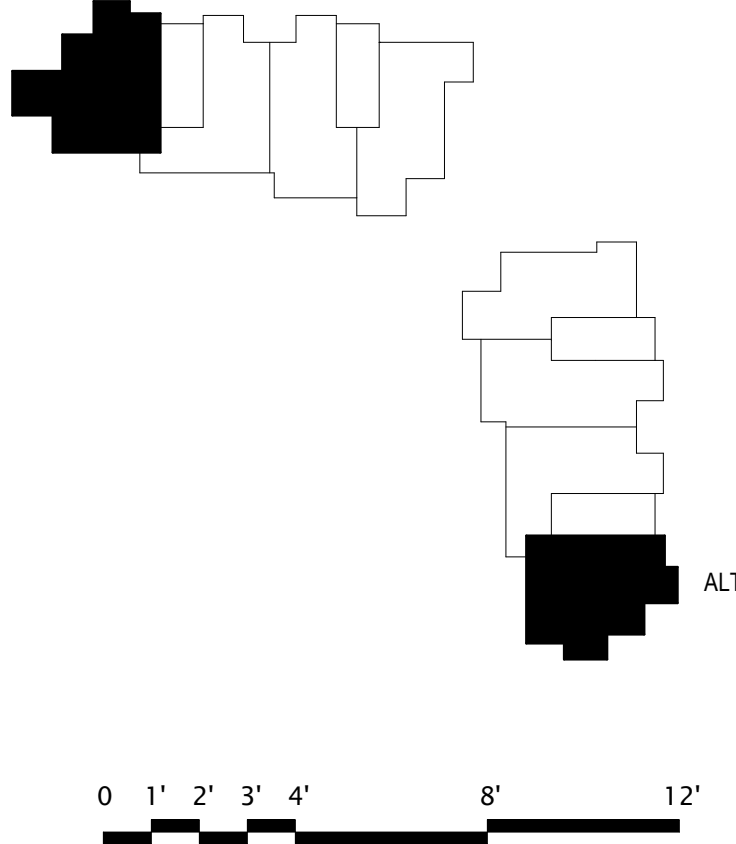


Appliance Index - UNIT F					
Manufacturer	Type Mark	Model	Description	Count	Unit Type
Ortal	EQ-01-16	Cornet LS 130H	Gas Fireplace Insert	1	UNIT F
Dacor	EQ-04-01	DOP48M8D	48" Contemporary Dual Gas Range Fuel Steam Range	1	UNIT F
Zephyr	EQ-04-02	DOP48M8D	48" Range Hood	1	UNIT F
Dacor	EQ-04-03	DRR3068R4P	30" Column Refrigerator Panel-Ready	1	UNIT F
Dacor	EQ-04-05	DRQ24M5T 7MM	24" Microwave-in-Drawer	1	UNIT F
Miele	EQ-04-06	CVA 7845	24" Built-In Coffee Machine	1	UNIT F
Dacor	EQ-04-08	DRZ24680LAP	24" Column Freezer Panel-Ready	1	UNIT F
Dacor	EQ-04-13	DRW24680LAP	24" Integrated Wine Column Panel-Ready	1	UNIT F
Dacor	EQ-04-29	DOW24T996B	24" Dishwasher Panel-Ready	1	UNIT F

- PLAN GENERAL NOTES
- DIMENSIONS ARE TO FACE OF STUD OF EXTERIOR WALLS, CORRIDOR WALLS & INTERIOR WALLS, UNO.
 - DIMENSIONS ARE TO CENTERLINE OF DEMISING WALLS, UNO.
 - ALL EXPOSED STRUCTURAL STEEL TO RECEIVE 1 HR INTUMESCENT PAINTING, UNO.
 - AT FRAMED EXTERIOR WALLS, FRAMING TO BE SET BACK 5/8" FROM FACE OF CONCRETE TO ALLOW FOR FLUSH ALIGNMENT OF SHEATHING TO EDGE OF SLAB, UNO.
 - CASEWORK DIMENSIONS ARE TO FACE OF FINISH, UNO.
 - SEE SHEETS A0.10 AND A0.11 FOR ASSEMBLIES.
 - ALL CORRIDOR WALLS ARE TYPE E6, UNO.
 - ALL DEMISING WALLS ARE TYPE J6, UNO.
 - ALL INTERIOR PARTITIONS ARE TYPE A6, UNO.
 - ALL VENT SHAFT WALLS ARE TYPE K4, UNO.
 - REFER TO LIFE SAFETY PLANS A0.30 - A0.34 FOR FULL EXTENT OF FIRE RATED WALLS.
 - UNIT PLAN LAYOUTS ON SHEETS A2.4A - A2.4R.
 - ALL OWNER PARKING STALLS SHALL INCLUDE EV INFRASTRUCTURE.
 - REFER TO SHEET A0.08 FOR ANSI TYPE B ACCESSIBILITY REQUIREMENTS.
 - REFER TO SHEET A0.07 FOR ANSI TYPE A ACCESSIBILITY REQUIREMENTS.
 - REFER TO SHEET A0.06 FOR ADA PUBLIC SPACE ACCESSIBILITY REQUIREMENTS.
 - ALL MECHANICAL EQUIPMENT LOCATED WITHIN ELEVATOR/MECHANICAL EQUIPMENT ENCLOSURE.
 - CONTRACTOR TO COORDINATE WITH FIREPLACE MANUFACTURER GUIDELINES FOR VENTING



1 ENLARGED PLAN - A/B-UNIT F ALT
SCALE: 1/4" = 1'-0"



109 South Jackson S, Suite 600
Seattle, Washington 98104 USA
+1 206 454 1690 olsonkundig.com

Olson Kundig

SOMMET BLANC
9300 MARSAC AVE
PARK CITY, UT 84060



Aspen Group USA, LLC
PO Box 980022
Park City, Utah 84098

Pool Consultant
Cloward & Co
2696 N University Ave, Suite 290
Provo, UT 84604

Landscape Architect
EPG Design
6940 South High Tech Drive, Suite 100
Midvale, Utah 84047

Specifications Writer
Friday Group
88 Mainelli Road
Middlebury, VT

Code Consultant
Holmes
600 1st Avenue, Suite 200A
Seattle, WA 98104

Fire Protection Engineer
Jensen Hughes
One Research Drive, Suite 305C
Westborough, MA 01581

Vertical Transportation Consultant
Larch Bates
1915 North Creek Parkway, Suite 304
Bothell, WA 98011

Structural Engineer
Magnusson Klemencic Associates
1301 5th Ave, Suite 3200
Seattle, WA 98101

Lighting Designer
O
319 SE MLK Blvd, Suite 210
Portland, Oregon 97219

Building Envelope Consultant
RDH
2101 N 34th St
Seattle, WA 98103

Accessibility Consultant
Studio Pacifica
2144 Westlake Ave N, Suite F
Seattle, WA 98109

MEP Engineer
WSP USA
1001 Fourth Ave., Suite 3100
Seattle, WA 98154

principal architect: TK, KM
project manager: TM, JB, SL, MD
drawn by: SK, SS, JR, CP, EA, JF, BD

checked by: JB
job no. 2052
date 05/31/2024

revisions:

T 06/19/25 ASI-015
O 04/07/25 ASI-010
N 04/07/25 ASI-009

no. date by

IFC SET 3 OF 3
05/31/2024

UNIT PLAN - TOWER
AB-UNIT F ALT

A2.4.F ALT