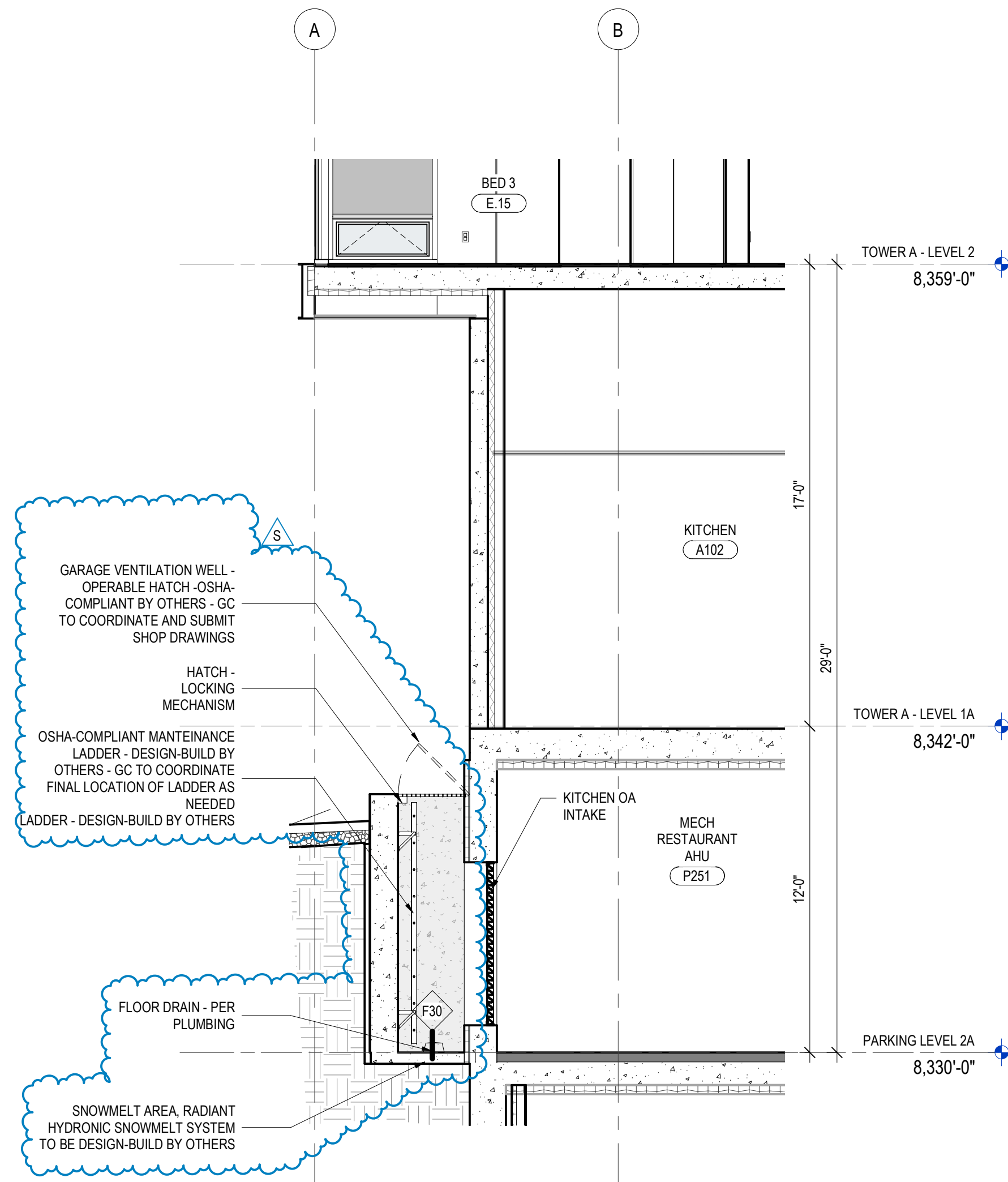
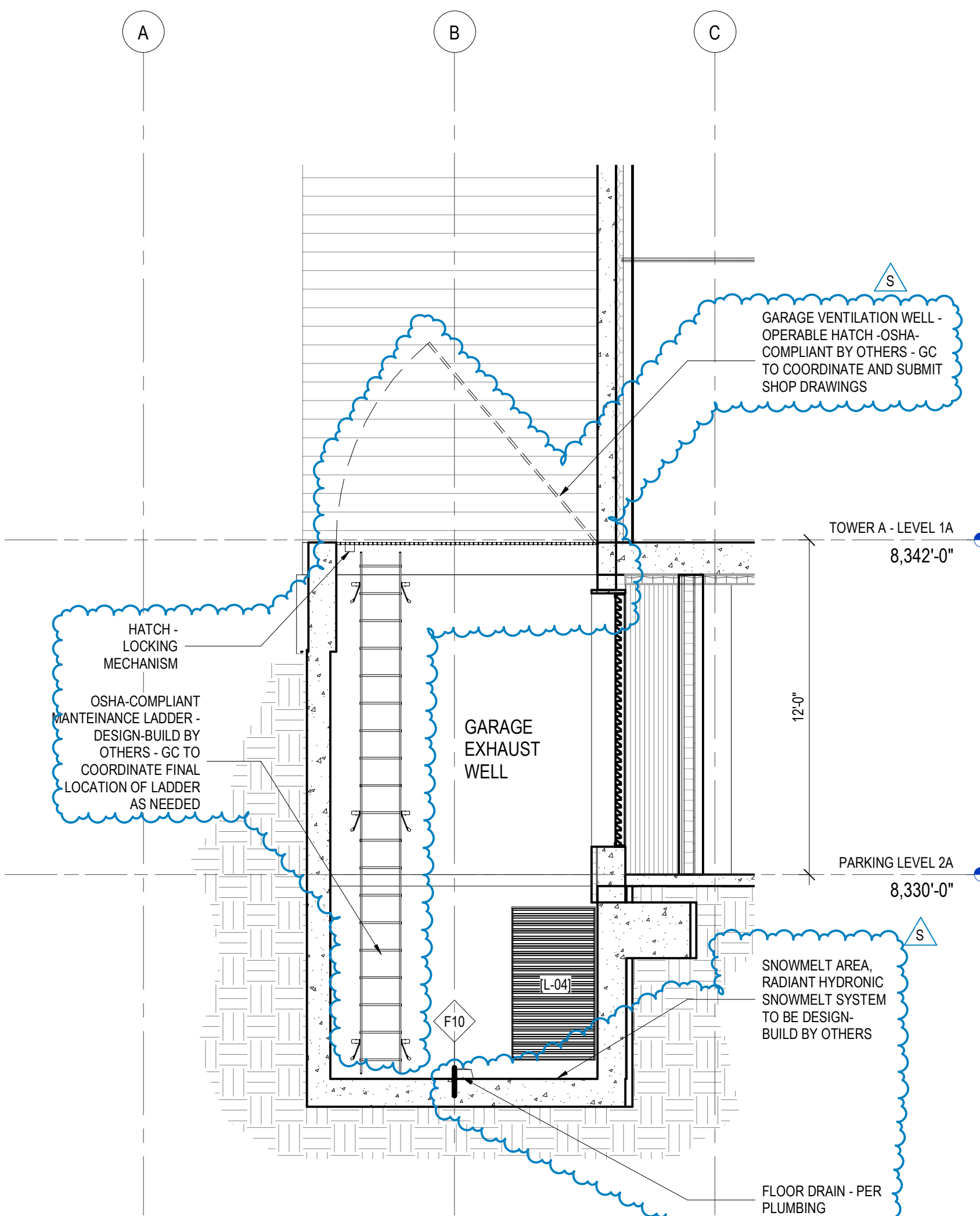


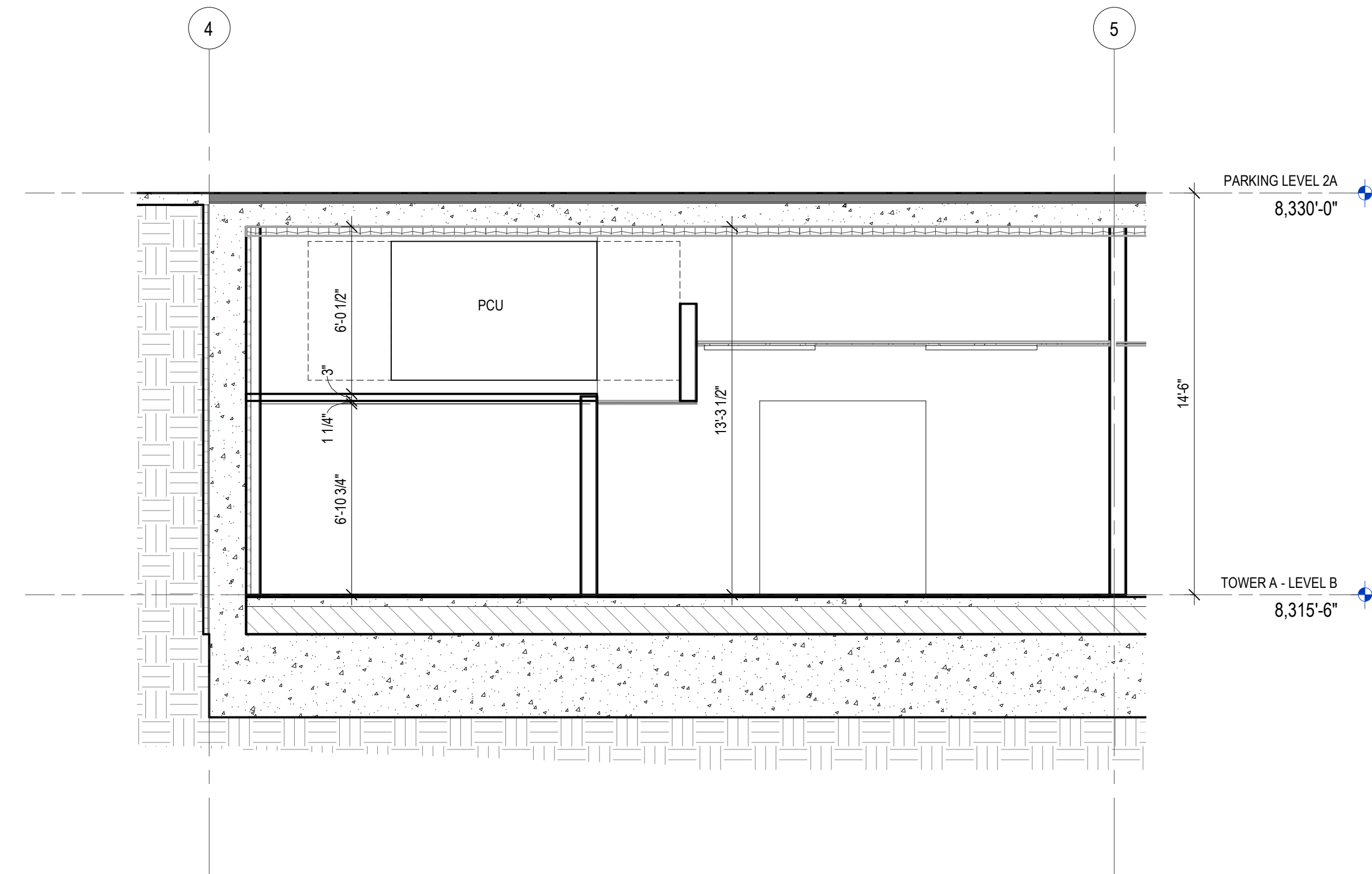
4 TOWER A - ENLARGED SECTION D
SCALE: 1/4" = 1'-0"



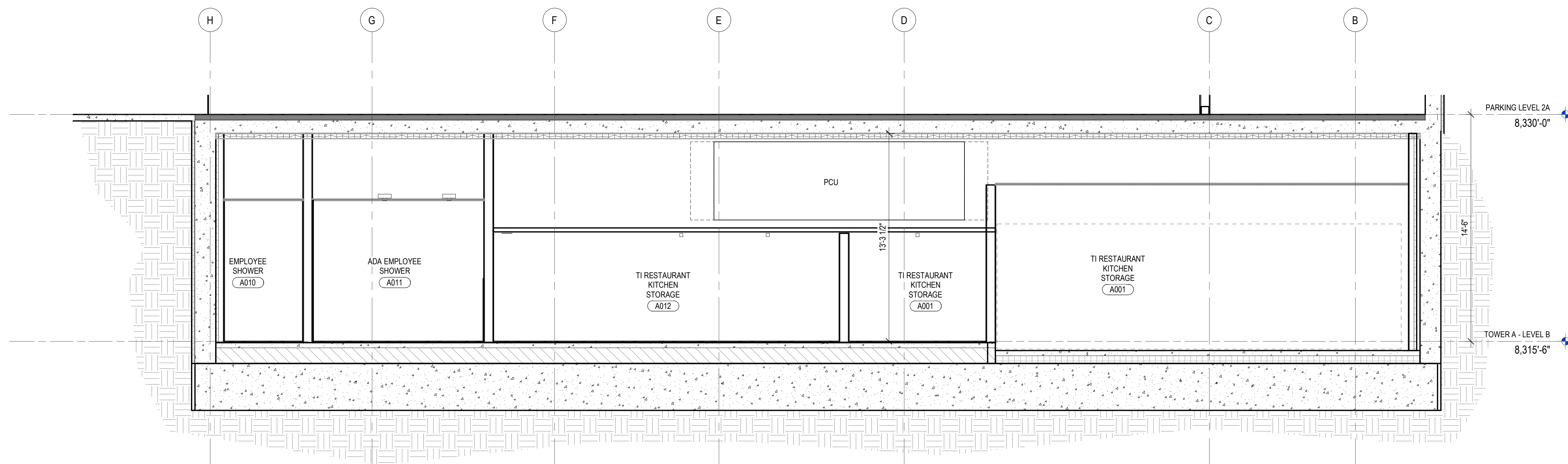
2 TOWER A - ENLARGED SECTION B
SCALE: 1/4" = 1'-0"



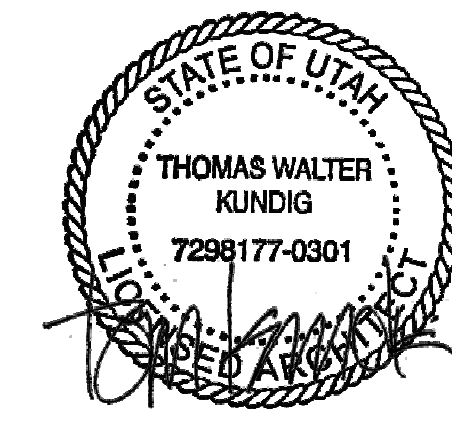
1 TOWER A - ENLARGED SECTION A
SCALE: 1/4" = 1'-0"



5 TOWER A - ENLARGED SECTION AT KITCHEN BOH 1
SCALE: 1/4" = 1'-0"



7 TOWER A - ENLARGED SECTION AT KITCHEN BOH 2
SCALE: 1/4" = 1'-0"



109 South Jackson B, Suite 600
Seattle, Washington 98104 USA
+1 206 254 0810 olsonkundig.com

Olson Kundig

SOMMET BLANC
9300 MARSAC AVE
PARK CITY, UT 84060



Aspen Group USA, LLC
PO Box 980022
Park City, Utah 84098

Pool Consultant
Cloward & Co
2696 N University Ave, Suite 250
Provo, UT 84604

Landscape Architect
EPG Design
6940 South High Tech Drive, Suite 100
Midvale, Utah 84047

Specifications Writer
Friday Group
88 Mainelli Road
Middlebury, VT

Code Consultant
Holmes
600 1st Avenue, Suite 200A
Seattle, WA 98104

Fire Protection Engineer
Jensen Hughes
One Research Drive, Suite 305C
Westborough, MA 01581

Vertical Transportation Consultant
Larch Bates
1915 North Creek Parkway, Suite 304
Bothell, WA 98011

Structural Engineer
Magnusson Klemencic Associates
1301 5th Ave, Suite 3200
Seattle, WA 98101

Lighting Designer
O
319 SE MLK Blvd, Suite 210
Portland, Oregon 97219

Building Envelope Consultant
RDH
2101 N 34th St
Seattle, WA 98103

Accessibility Consultant
Studio Pacifica
2144 Westlake Ave N, Suite F
Seattle, WA 98109

MEP Engineer
WSP USA
1001 Fourth Ave., Suite 3100
Seattle, WA 98154

principal architect TK, KM
project manager TM, JB, SL, MD
drawn by SK, SS, JR, CP, EA
checked by JB

job no. 2052
date 05/31/2024

revisions:
S 06/2025 ASI-014
N 04/07/25 ASI-009
no. date by

IFC SET 3 OF 3
05/31/2024

ENLARGED SECTIONS -
TOWER A

A4.3A.1