

Reserved for permit stamp

109 South Jackson Street, Suite 800
Seattle, Washington 98104 USA
+1 206 834 5870 olsonkundig.com

Olson Kundig

project
SOMMET BLANC
9300 Marzac Ave (B2 East Parcel)
Park City, Utah 84060



Aspen Group USA, LLC
PO Box 980022
Park City, Utah 84098

Pool Consultant
Cloward H2O
2696 N University Ave, Suite 290
Provo, UT 84604

Landscape Architect
EPG Design
6949 South High Tech Drive, Suite 100
Midvale, Utah 84047

Specifications Writer
Friday Group
86 Marrett Road
Middlebury, VT

Code Consultant
Holmes
600 1st Avenue, Suite 200A
Seattle, WA 98104

Fire Protection Engineer
Jensen Hughes
One Research Drive, Suite 305C
Westborough, MA 01581

Vertical Transportation Consultant
Larch Bates
19515 North Creek Parkway, Suite 304
Bothell, WA 98011

Structural Engineer
Magnusson Klemencic Associates
1301 5th Ave, Suite 3200
Seattle, WA 98101

Lighting Designer
O-
1319 SE MLK Blvd, Suite 210
Portland, Oregon 97219

Building Envelope Consultant
RDH
2101 N 34th St
Seattle, WA 98103

Accessibility Consultant
Studio Pacifica
2144 Westlake Ave N, Suite F
Seattle, WA 98109

MEP Engineer
WSP USA
1001 Fourth Ave., Suite 3100
Seattle, WA 98154

principal architect _____
project manager _____
drawn by _____
checked by _____
job no. _____
date 11/18/2022

revisions:

no. date by

ISSUE FOR
CONSTRUCTION
11/18/2022

TOWER A/B ELECTRICAL
LIGHTING PLAN - UNIT A

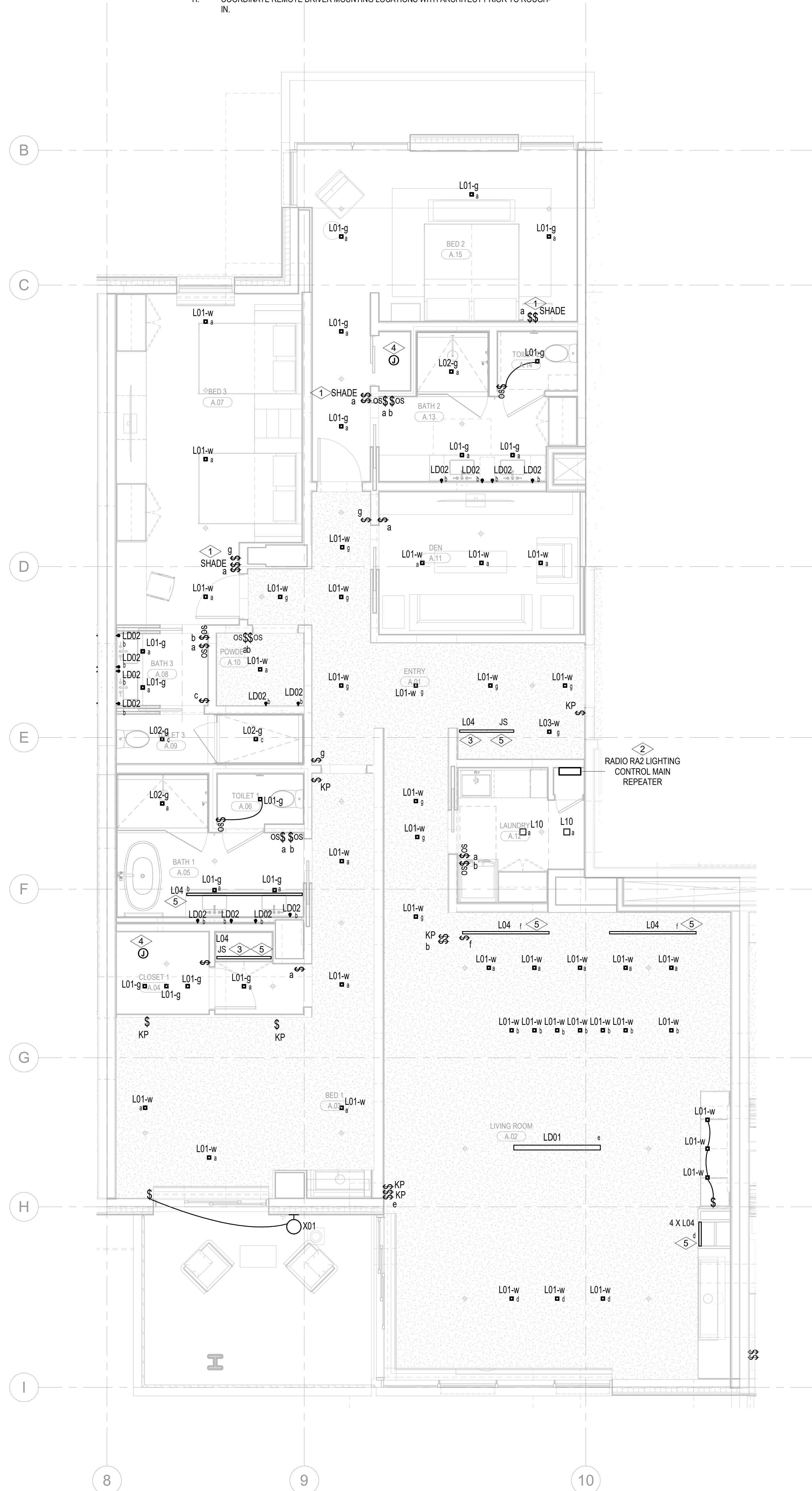
E3.4.A

SHEET NOTES:

- DRAWINGS ARE INTENDED TO SHOW GENERAL ARRANGEMENT, DESIGN, AND EXTENT OF WORK AND ARE DIAGRAMMATIC. DRAWINGS ARE NOT INTENDED TO SHOW EXACT LOCATIONS EXCEPT WHERE DIMENSIONS ARE SHOWN. ELECTRICAL WORK IS SHOWN ON PLANS USING STANDARD INDUSTRY SYMBOLS. BEFORE ORDERING MATERIALS OR COMMENCEMENT WITH WORK, VERIFY MEASUREMENTS PERTAINING THERETO AND ASSUME RESPONSIBILITY THEREFOR. ANY SUBSTANTIAL DIFFERENCES BETWEEN DRAWINGS AND CONDITIONS IN THE FIELD SHALL BE SUBMITTED TO THE CONSTRUCTION MANAGER FOR CONSIDERATION BEFORE PROCEEDING WITH WORK.
- WORK PERFORMED INCLUDES LABOR, MATERIALS, AND EQUIPMENT REQUIRED TO INSTALL A COMPLETE ELECTRICAL SYSTEM AS INDICATED ON DRAWINGS AND SPECIFICATIONS.
- PROVIDE EXIT SIGNS AND CONNECT EXIT SIGNS AND LUMINAIRES NOTED AS EMERGENCY TO EMERGENCY POWER SOURCE AS INDICATED ON PLANS.
- REFER TO LUMINAIRE SCHEDULE FOR INFORMATION.
- FIXTURE CATALOG NUMBERS ARE SUBJECT TO CHANGE BY MANUFACTURER. VERIFY FIXTURE CATALOG NUMBERS FOR ACCURACY.
- VERIFY EQUIPMENT SIZES AND POWER REQUIREMENTS FOR EQUIPMENT PROVIDED BY OTHERS.
- ELECTRICAL CONDUITS IN FINISHED SPACES SHALL BE CONCEALED. COORDINATE WITH OTHER TRADES AND USE CHASES AND CEILING SPACES. LOCATIONS OF ELECTRICAL JUNCTION BOXES IN FINISHED SPACES SHALL BE APPROVED BY ARCHITECT PRIOR TO ROUGH-IN.
- COORDINATE REMOTE DRIVER MOUNTING LOCATIONS WITH ARCHITECT PRIOR TO ROUGH-IN.

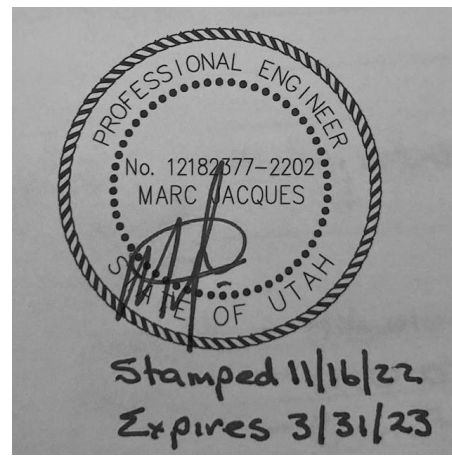
NUMBERED NOTES:

- LUTRON WIRELESS PICO CONTROL SWITCH IS TO BE SUPPLIED AND INSTALLED FOR SHADE CONTROL.
- SUPPLY AND INSTALL LUTRON RADIO RA2 SYSTEM TO PROVIDE PARTIAL LIGHTING CONTROL IN THE RESIDENTIAL UNITS. MASTER BEDROOM (DENOTED AS BED 1) AND ALL ROOMS WITH MORE THAN THREE (3) LIGHTING CONTROL ZONES ARE TO BE CONTROLLED BY THE LUTRON RADIO RA2 SYSTEM. ALL ROOMS WITH THREE (3) LIGHTING CONTROL ZONES OR LESS ARE TO BE CONTROLLED BY LOCAL DIMMERS.
- LIGHT FIXTURE LOCATED IN CLOSETS ARE TO BE CONTROLLED BY CLOSET DOOR JAM SWITCH.
- SUPPLY AND INSTALL CEILING MOUNTED JUNCTION BOX COMPLETE WITH CAPPED LIGHTING CIRCUIT WIRING FOR INSTALLATION OF FUTURE CLOSET LIGHT FIXTURE.
- REFER TO ARCHITECTURAL DRAWINGS AND ELEVATIONS FOR EXACT DIMENSION AND MOUNTING LOCATION OF LIGHT FIXTURE TYPE L04. COORDINATE WITH MILLWORK CONTRACTOR PRIOR TO INSTALLATION.



1 TOWER A/B - ELECTRICAL LIGHTING PLAN - UNIT A

SCALE: 1/4" = 1'-0"



Reserved for permit stamp

100 South Jackson St, Suite 800
Seattle, Washington 98104 USA
+1 206 834 5870 olsonkundig.com

Olson Kundig

project
SOMMET BLANC
9300 Marasc Ave (B2 East Parcel)
Park City, Utah 84060



Aspen Group USA, LLC
PO Box 980022
Park City, Utah 84098

Pool Consultant
Cloward M20
2696 N University Ave, Suite 290
Provo, UT 84604

Landscape Architect
EPG Design
6048 South High Tech Drive, Suite 100
Midvale, Utah 84047

Specifications Writer
Friday Group
86 Marrett Road
Middlebury, VT

Code Consultant
Holmes
600 1st Avenue, Suite 200A
Seattle, WA 98104

Fire Protection Engineer
Jensen Hughes
One Research Drive, Suite 305C
Westborough, MA 01581

Vertical Transportation Consultant
Larch Bates
19515 North Creek Parkway, Suite 304
Bothell, WA 98011

Structural Engineer
Magnusson Klemencic Associates
1301 5th Ave, Suite 3200
Seattle, WA 98101

Lighting Designer
O-
1319 SE MLK Blvd, Suite 210
Portland, Oregon 97219

Building Envelope Consultant
RDH
2101 N 34th St
Seattle, WA 98103

Accessibility Consultant
Studio Pacifica
2144 Westlake Ave N, Suite F
Seattle, WA 98109

MEP Engineer
WSP USA
1001 Fourth Ave., Suite 3100
Seattle, WA 98154

principal architect _____
project manager _____
drawn by _____
checked by _____
job no. _____
date 11/18/2022

revisions:

no. date by

ISSUE FOR
CONSTRUCTION
11/18/2022

TOWER A/B ELECTRICAL
LIGHTING PLAN - UNIT B

E3.4.B

SHEET NOTES:

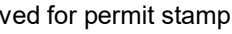
- A. DRAWINGS ARE INTENDED TO SHOW GENERAL ARRANGEMENT, DESIGN, AND EXTENT OF WORK AND ARE DIAGRAMMATIC. DRAWINGS ARE NOT INTENDED TO SHOW EXACT LOCATIONS EXCEPT WHERE DIMENSIONS ARE SHOWN. ELECTRICAL WORK IS SHOWN ON PLANS USING STANDARD INDUSTRY SYMBOLS. BEFORE ORDERING MATERIALS OR COMMENCEMENT WITH WORK, VERIFY MEASUREMENTS PERTAINING THERETO AND ASSUME RESPONSIBILITY THEREFOR. ANY SUBSTANTIAL DIFFERENCES BETWEEN DRAWINGS AND CONDITIONS IN THE FIELD SHALL BE SUBMITTED TO THE CONSTRUCTION MANAGER FOR CONSIDERATION BEFORE PROCEEDING WITH WORK.
- B. WORK PERFORMED INCLUDES LABOR, MATERIALS, AND EQUIPMENT REQUIRED TO INSTALL A COMPLETE ELECTRICAL SYSTEM AS INDICATED ON DRAWINGS AND SPECIFICATIONS.
- C. PROVIDE EXIT SIGNS AND CONNECT EXIT SIGNS AND LUMINAIRES NOTED AS EMERGENCY TO EMERGENCY POWER SOURCE AS INDICATED ON PLANS.
- D. REFER TO LUMINAIRE SCHEDULE FOR INFORMATION.
- E. FIXTURE CATALOG NUMBERS ARE SUBJECT TO CHANGE BY MANUFACTURER. VERIFY FIXTURE CATALOG NUMBERS FOR ACCURACY.
- F. VERIFY EQUIPMENT SIZES AND POWER REQUIREMENTS FOR EQUIPMENT PROVIDED BY OTHERS.
- G. ELECTRICAL CONDUITS IN FINISHED SPACES SHALL BE CONCEALED. COORDINATE WITH OTHER TRADES AND USE CHASES AND CEILING SPACES. LOCATIONS OF ELECTRICAL JUNCTION BOXES IN FINISHED SPACES SHALL BE APPROVED BY ARCHITECT PRIOR TO ROUGH-IN.
- H. COORDINATE REMOTE DRIVER MOUNTING LOCATIONS WITH ARCHITECT PRIOR TO ROUGH-IN.



NUMBERED NOTES:

1. LUTRON WIRELESS PICO CONTROL SWITCH IS TO BE SUPPLIED AND INSTALLED FOR SHADE CONTROL.
2. LIGHT FIXTURE LOCATED IN CLOSETS ARE TO BE CONTROLLED BY CLOSET DOOR JAM SWITCH.
3. SUPPLY AND INSTALL LUTRON RADIO RAZ SYSTEM TO PROVIDE PARTIAL LIGHTING CONTROL IN THE RESIDENTIAL UNITS. MASTER BEDROOM (DENOTED AS BED 1) AND ALL ROOMS WITH MORE THAN THREE (3) LIGHTING CONTROL ZONES ARE TO BE CONTROLLED BY THE LUTRON RADIO RAZ SYSTEM. ALL ROOMS WITH THREE (3) LIGHTING CONTROL ZONES OR LESS ARE TO BE CONTROLLED BY LOCAL DIMMERS.
4. SUPPLY AND INSTALL CEILING MOUNTED JUNCTION BOX COMPLETE WITH CAPPED LIGHTING CIRCUIT WIRING FOR INSTALLATION OF FUTURE CLOSET LIGHT FIXTURE.
5. REFER TO ARCHITECTURAL DRAWINGS AND ELEVATIONS FOR EXACT DIMENSION AND MOUNTING LOCATION OF LIGHT FIXTURE TYPE L04. COORDINATE WITH MILLWORK CONTRACTOR PRIOR TO INSTALLATION.

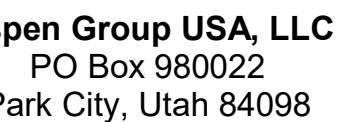




159 South Jackson St., Suite 600
Seattle, Washington 98104 USA
+1 206 624 5670 olsonkundig.com

Olson Kunding

SOMMET BLANC
9300 Marsac Ave (B2 East Parcel)
Bordeaux, France 331 44 84 00 00



Pool Consultant
Cloward H2O
696 N University Ave, Suite 290
Provo, UT 84604

EPG Design
949 South High Tech Drive, Suite 100
Midvale, Utah 84047

Friday Group
8 Mainelli Road
Middlebury, VT

Code Consultant
Holmes
100 1st Avenue, Suite 200A
Seattle, WA 98104

Fire Protection Engineer
Ensen Hughes
One Research Drive, Suite 305C
Westborough, MA 01581

Vertical Transportation Consultant
Merch Bates
9515 North Creek Parkway, Suite 300
Bothell, WA 98011

Structural Engineer
Magnusson Klemencic Associates
301 5th Ave, Suite 3200
Seattle, WA 98101

Lighting Designer
319 SE MLK Blvd, Suite 210
Portland, Oregon 97219

Building Envelope Consultant
RDH
101 N 34th St
Seattle, WA 98103

Accessibility Consultant
Studio Pacifica
1144 Westlake Ave N, Suite F
Seattle, WA 98109

MEP Engineer
WSP USA
1001 Fourth Ave., Suite 3100
Seattle, WA 98154

principal architect _____
project manager _____
drawn by _____
checked by Checker
job no. _____
date 11/18/2022

revisions:

no.	date	b
-----	------	---

ISSUE FOR
CONSTRUCTION
11/18/2022

POWER A/B ELECTRICAL
LIGHTING PLAN - UNIT C

E3.4.C

A. DRAWINGS ARE INTENDED TO SHOW GENERAL ARRANGEMENT, DESIGN, AND EXTENT OF WORK AND ARE DIAGRAMMATIC. DRAWINGS ARE NOT INTENDED TO SHOW EXACT LOCATION OF ANY WHERE DIMENSIONS. DIMENSIONS SHOWN ON PLANS USING STANDARD INDUSTRY SYMBOLS. BEFORE ORDERING MATERIALS OR COMMENCEMENT WITH WORK, VERIFY MEASUREMENTS PERTAINING HEREIN AND CORRECT ANY DISCREPANCIES. ANY SUBSTANTIAL DIFFERENCES BETWEEN THE DRAWINGS AND CONDITIONS IN THE FIELD SHALL BE SUBMITTED TO THE CONSTRUCTION MANAGER FOR CONSIDERATION BEFORE PROCEEDING WITH WORK.

B. THE CONTRACTOR SHALL INCLUDE THE FOLLOWING INFORMATION REQUIRED TO INSTALL A COMPLETE ELECTRICAL SYSTEM AS NOTICED ON DRAWINGS AND SPECIFICATIONS:

C. PROVIDE EXIST SIGNS AND CONNECT EXIST SIGNS AND LUMINAIRES NOTED AS EMERGENCY TO EMERGENCY POWER SOURCES AS NOTICED ON PLANS.

D. PROVIDE A MAINTENANCE SCHEDULE FOR ALL ELECTRICAL EQUIPMENT.

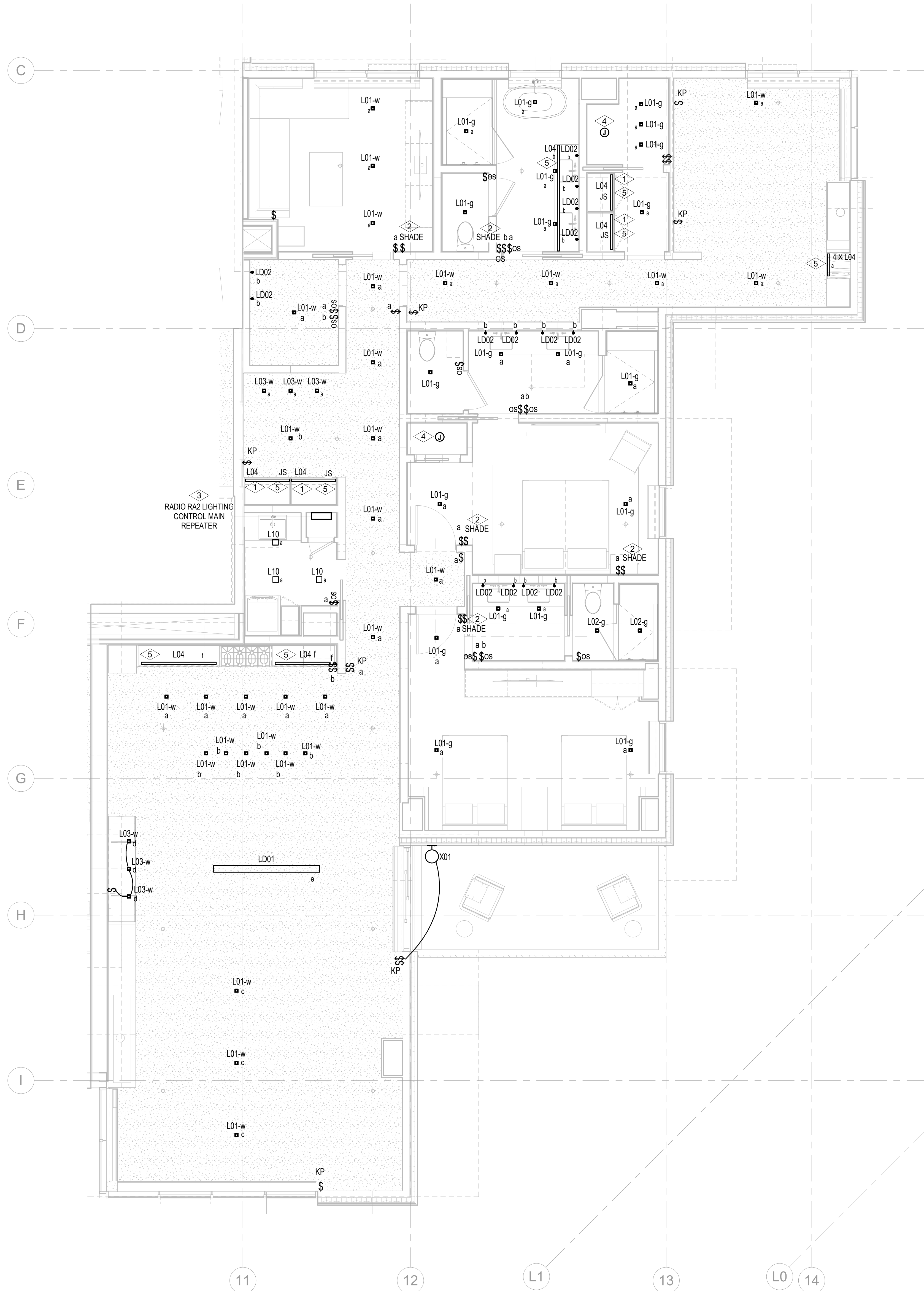
E. FUTURE CATALOG NUMBERS ARE SUBJECT TO CHANGE BY MANUFACTURER. VERIFY FUTURE CATALOG NUMBERS FOR ACCURACY.

F. VERIFY EQUIPMENT SIZES AND POWER REQUIREMENTS FOR EQUIPMENT PROVIDED BY OTHERS.

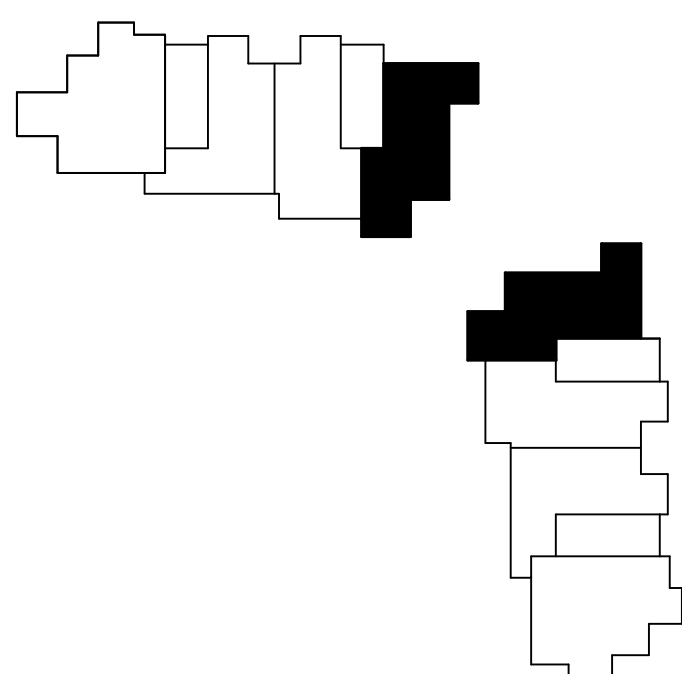
G. ELECTRICAL CONDUITS IN FINISHED SPACES SHALL BE CONCEALED. COORDINATE WITH OTHER TRADES AND DESIGN TO PROVIDE CONCEALED SPACES. LOCATIONS OF ELECTRICAL JUNCTION BOXES IN FINISHED SPACES SHALL BE APPROVED BY ARCHITECT PRIOR TO ROUGH-IN.

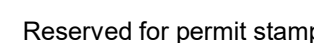
H. COORDINATE REMOTE DRYER MOUNTING LOCATIONS WITH ARCHITECT PRIOR TO ROUGH-IN.

- 1 LIGHT FIXTURE LOCATED IN CLOSETS ARE TO BE CONTROLLED BY CLOSET DOOR JAMB SWITCH.
- 2 LUTRON WIRELESS PICO CONTROL SWITCH IS TO BE SUPPLIED AND INSTALLED FOR SHADE CONTROL.
- 3 SUPPLY AND INSTALL LUTRON RADIO RAS SYSTEM TO PROVIDE PARTIAL LIGHTING IN THE RESIDENTIAL LISTS. MASTER BEDROOM (DENOMED AS BED) 1 AND ALL ROOMS WITH MORE THAN THREE (3) LIGHTING CONTROL ZONES ARE TO BE CONTROLLED BY THE LUTRON RADIO RAS SYSTEM. ALL ROOMS WITH THREE (3) LIGHTING CONTROL ZONES OR LESS ARE TO BE CONTROLLED BY LOCAL DIMMERS.
- 4 SUPPLY AND INSTALL CEILING MOUNTED JUNCTION BOX COMPLETE WITH CAPPED LIGHTING CIRCUIT WIRING FOR INSTALLATION OF FUTURE CLOSET LIGHT FIXTURE.
- 5 REFER TO ARCHITECTURAL DRAWINGS AND ELEVATIONS FOR EXACT DIMENSIONAL AND MOUNTING LOCATION OF LIGHT FIXTURE TYPE 104. COORDINATE WITH MILLWORK CONTRACTOR PRIOR TO INSTALLATION.



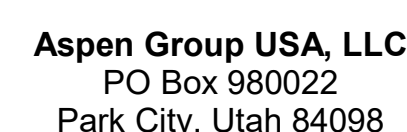
1 TOWER A/B - ELECTRICAL LIGHTING PLAN - UNIT C
SCALE: 1/4" = 1'-0"





Olson Kundig

Project: **SOMMET BLANC**
3300 Marsac Ave (B2 East Parcel)
County: Clark City: Las Vegas 89109



no.	date	b
-----	------	---

ISSUE FOR
CONSTRUCTION
11/18/2022

TOWER A/B ELECTRICAL
LIGHTING PLAN - UNIT D

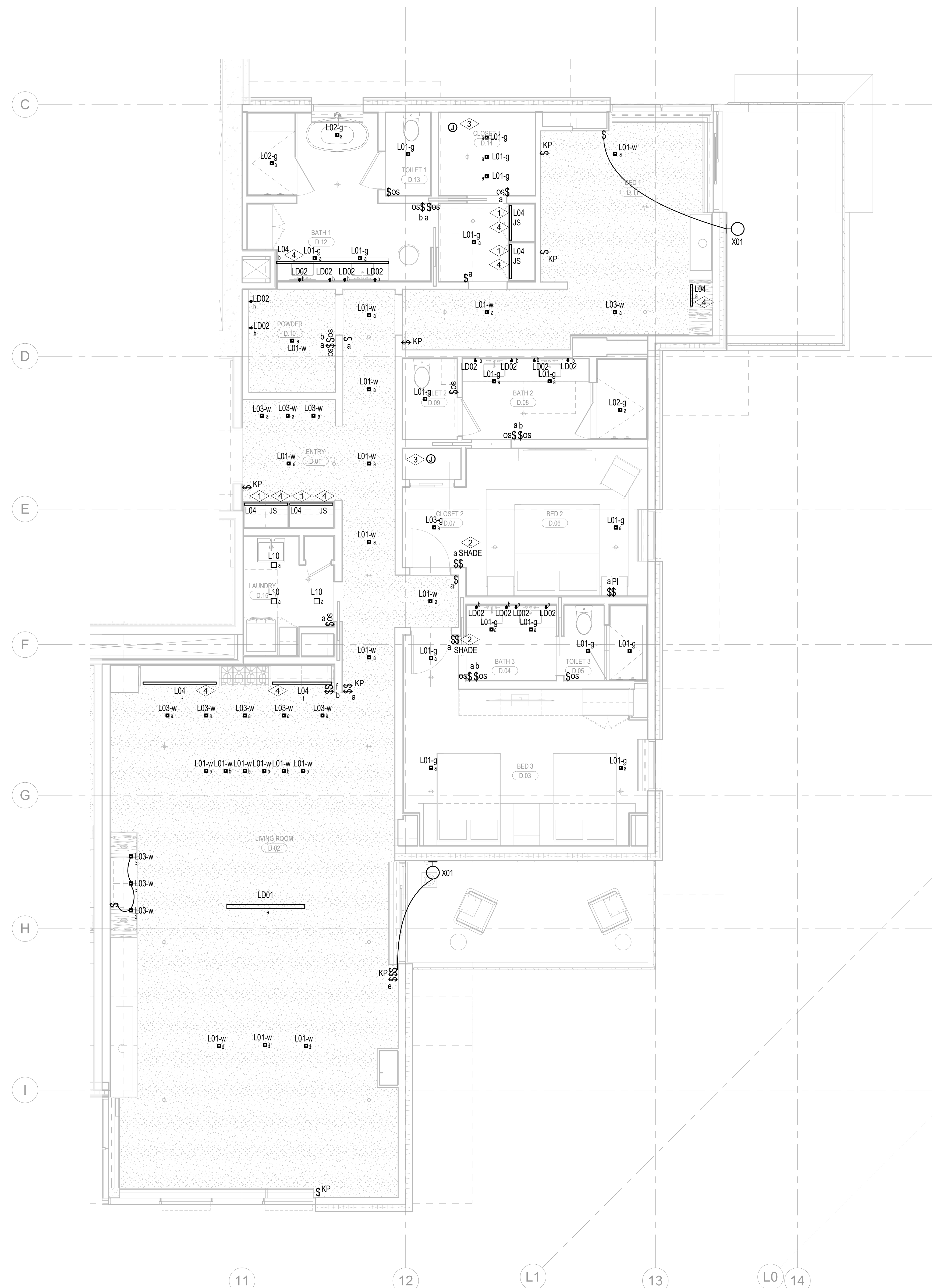
E3.4.D

SHEET NOTES:

- | | |
|---|--|
| | DRAWINGS ARE INTENDED TO SHOW GENERAL ARRANGEMENT, DESIGN AND EXTENT OF WORK AND ARE DIAGRAMMATIC. DRAWINGS ARE NOT INTENDED TO SHOW EXACT LOCATIONS EXCEPT WHERE DIMENSIONS ARE SHOWN. ELECTRICAL WORK IS SHOWN ON AND USING STANDARD SYMBOLS AND NOTATION. THE CONTRACTOR SHALL BE RESPONSIBLE FOR COMMENCEMENT WITH WORK, VERIFY MEASUREMENTS PERTAINING THERETO AND ASSUME RESPONSIBILITY THEREOF. ANY SUBSTANTIAL DIFFERENCES BETWEEN DRAWINGS AND CONDITIONS IN THE FIELD SHALL BE SUGGESTED TO THE CONSTRUCTOR'S MANAGER FOR CONSIDERATION BEFORE PROCEEDING WITH THE WORK. |
| B | WORK PERFORMED INCLUDES LABOR, MATERIALS, AND EQUIPMENT REQUIRED TO INSTALL A COMPLETE ELECTRICAL SYSTEM AS INDICATED ON DRAWINGS AND SPECIFICATIONS. THE CONTRACTOR SHALL BE RESPONSIBLE FOR OBTAINING ALL NECESSARY NOTICES AS EMERGENCY POWER SOURCE AS NO INFORMATION ON PLANS. |
| D | REFER TO LUMINAIRE SCHEDULE FOR IDENTIFICATION. |
| F | VERIFY THE SIGNS AND NOTATION TO BE CHANGED BY MANUFACTURER. VERIFY FUTURE CATALOG NUMBERS FOR ACCURACY. |
| G | VERIFY EQUIPMENT SIZES AND POWER REQUIREMENTS FOR EQUIPMENT PROVIDED BY OTHERS. |
| G | ELECTRICAL CONDUITS IN FINISHED SPACES SHALL BE CONCEALED. COORDINATE WITH OTHER TRADES AND USE CHASES AND CEILING SPACES. LOCATIONS OF ELECTRICAL JUNCTION BOXES IN FINISHED SPACES SHALL BE APPROVED BY ARCHITECT PRIOR TO ROUGH-IN. |
| H | COORDINATE REMOTE DRYER MOUNTING LOCATIONS WITH ARCHITECT PRIOR TO ROUGH |

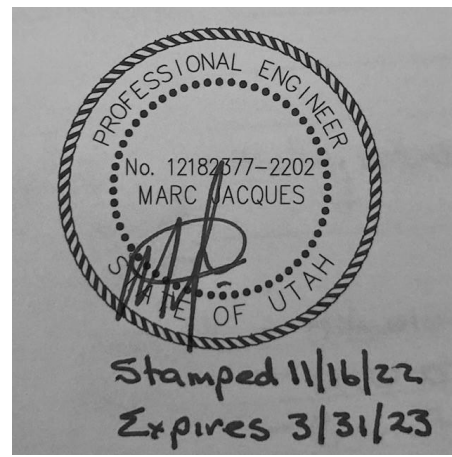
NUMBERED NOTES:

- 1 LIGHT FIXTURE LOCATED IN CLOSETS ARE TO BE CONTROLLED BY CLOSET DOOR JAM SWITCH.
2 LUTRON WIRELESS PICO CONTROL SWITCH IS TO BE SUPPLIED AND INSTALLED FOR SHADE CONTROL..
3 SUPPLY AND INSTALL CEILING MOUNTED JUNCTION BOX COMPLETE WITH CAPPED LIGHTING CIRCUIT WIRING FOR INSTALLATION
4 OF FUTURE CLOSET LIGHT FIXTURE.
5
6 REFER TO ARCHITECTURAL DRAWINGS AND ELEVATIONS FOR EXACT DIMENSION AND MOUNTING LOCATION OF LIGHT FIXTURE
7 TYPE L04. COORDINATE WITH MILLWORK CONTRACTOR PRIOR TO INSTALLATION.



1 TOWER A/B - ELECTRICAL LIGHTING PLAN - UNIT D
SCALE: 1/4" = 1'-0"





Reserved for permit stamp

100 South Jackson • Suite 800
Seattle, Washington 98104 USA
+1 206 834 5870 olsonkundig.com

Olson Kundig

project
SOMMET BLANC
9300 Marzac Ave (B2 East Parcel)
Park City, Utah 84060



Aspen Group USA, LLC
PO Box 980022
Park City, Utah 84098

Pool Consultant
Cloward M20
2696 N University Ave, Suite 290
Provo, UT 84604

Landscape Architect
EPG Design
6948 South High Tech Drive, Suite 100
Midvale, Utah 84047

Specifications Writer
Friday Group
86 Mainell Road
Middsbury, VT

Code Consultant
Holmes
600 1st Avenue, Suite 200A
Seattle, WA 98104

Fire Protection Engineer
Jensen Hughes
One Research Drive, Suite 305C
Westborough, MA 01581

Vertical Transportation Consultant
Larch Bates
19515 North Creek Parkway, Suite 304
Bothell, WA 98011

Structural Engineer
Magnusson Klemencic Associates
1301 5th Ave, Suite 3200
Seattle, WA 98101

Lighting Designer
O-
1319 SE MLK Blvd, Suite 210
Portland, Oregon 97219

Building Envelope Consultant
RDH
2101 N 34th St
Seattle, WA 98103

Accessibility Consultant
Studio Pacifica
2144 Westlake Ave N, Suite F
Seattle, WA 98109

MEP Engineer
WSP USA
1001 Fourth Ave., Suite 3100
Seattle, WA 98154

principal architect _____
project manager _____
drawn by _____
checked by _____
job no. _____
date 11/18/2022

revisions:

no. date by

ISSUE FOR
CONSTRUCTION
11/18/2022

TOWR A/B ELECTRICAL
LIGHTING PLAN - UNIT E

E3.4.E

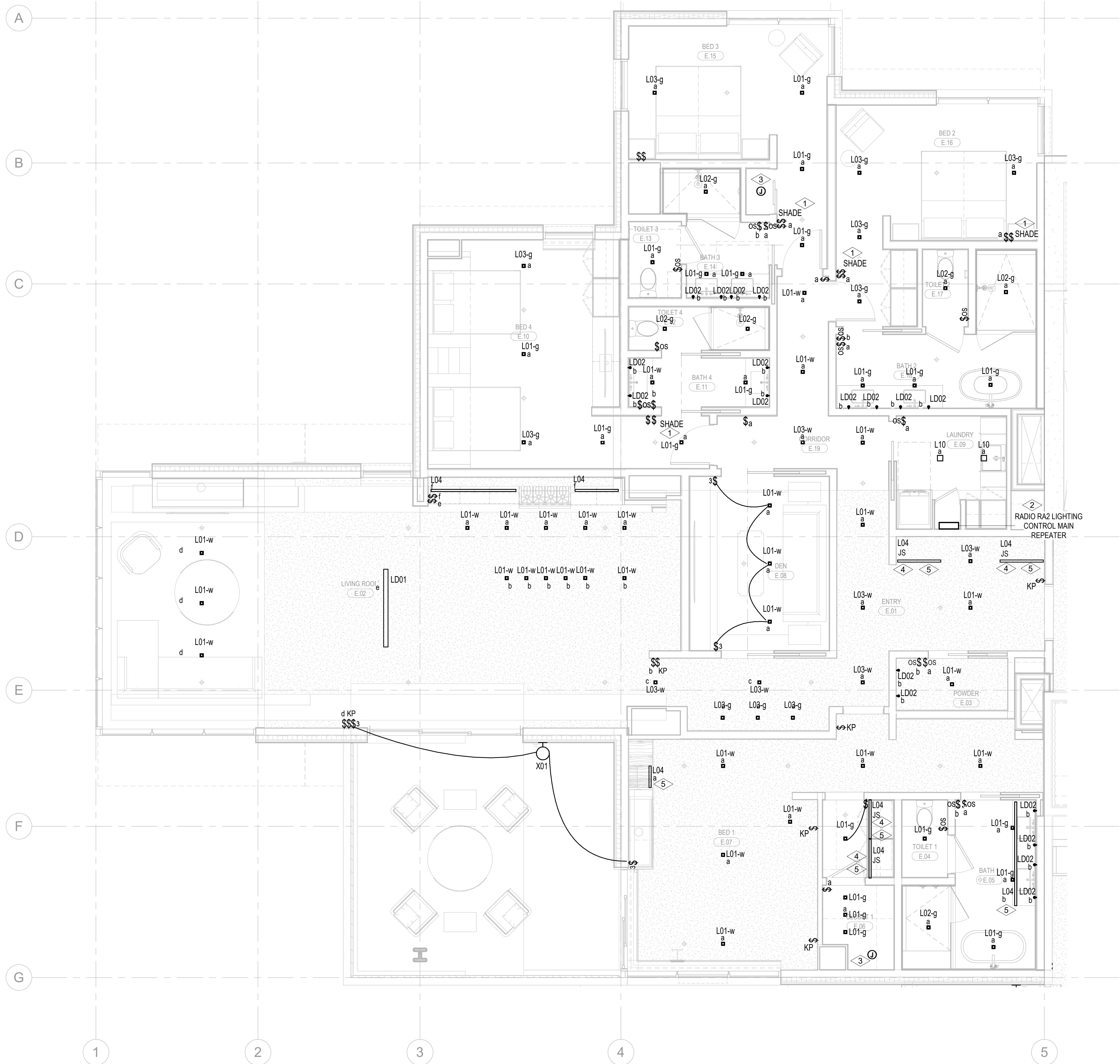
SHEET NOTES:

- A. DRAWINGS ARE INTENDED TO SHOW GENERAL ARRANGEMENT, DESIGN, AND EXTENT OF WORK AND ARE DIAGRAMMATIC. DRAWINGS ARE NOT INTENDED TO SHOW EXACT LOCATIONS EXCEPT WHERE DIMENSIONS ARE SHOWN. ELECTRICAL WORK IS SHOWN ON PLANS USING STANDARD INDUSTRY SYMBOLS. BEFORE ORDERING MATERIALS OR COMMENCEMENT WITH WORK, VERIFY MEASUREMENTS PERTAINING THERETO AND ASSUME RESPONSIBILITY THEREFOR. ANY SUBSTANTIAL DIFFERENCES BETWEEN DRAWINGS AND CONDITIONS IN THE FIELD SHALL BE SUBMITTED TO THE CONSTRUCTION MANAGER FOR CONSIDERATION BEFORE PROCEEDING WITH WORK.
- B. WORK PERFORMED INCLUDES LABOR, MATERIALS, AND EQUIPMENT REQUIRED TO INSTALL A COMPLETE ELECTRICAL SYSTEM AS INDICATED ON DRAWINGS AND SPECIFICATIONS. PROVIDE EXIT SIGNS AND CONNECT EXIT SIGNS AND LUMINAIRES NOTED AS EMERGENCY TO EMERGENCY POWER SOURCE AS INDICATED ON PLANS.
- D. REFER TO LUMINAIRE SCHEDULE FOR INFORMATION.
- E. FIXTURE CATALOG NUMBERS ARE SUBJECT TO CHANGE BY MANUFACTURER. VERIFY FIXTURE CATALOG NUMBERS FOR ACCURACY.
- F. VERIFY EQUIPMENT SIZES AND POWER REQUIREMENTS FOR EQUIPMENT PROVIDED BY OTHERS.
- G. ELECTRICAL CONDUITS IN FINISHED SPACES SHALL BE CONCEALED. COORDINATE WITH OTHER TRADES AND USE CHASES AND CEILING SPACES. LOCATIONS OF ELECTRICAL JUNCTION BOXES IN FINISHED SPACES SHALL BE APPROVED BY ARCHITECT PRIOR TO ROUGH-IN.
- H. COORDINATE REMOTE DRIVER MOUNTING LOCATIONS WITH ARCHITECT PRIOR TO ROUGH-IN.

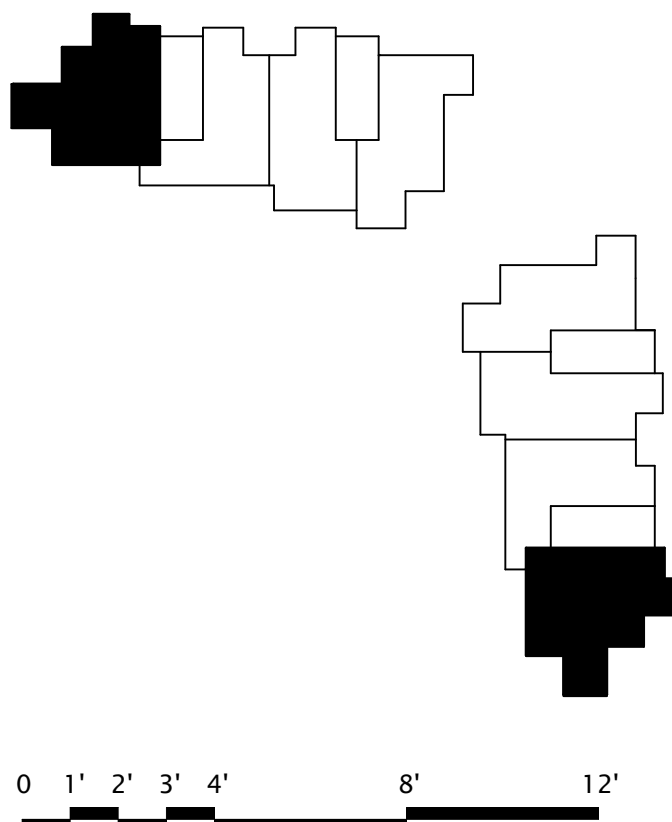


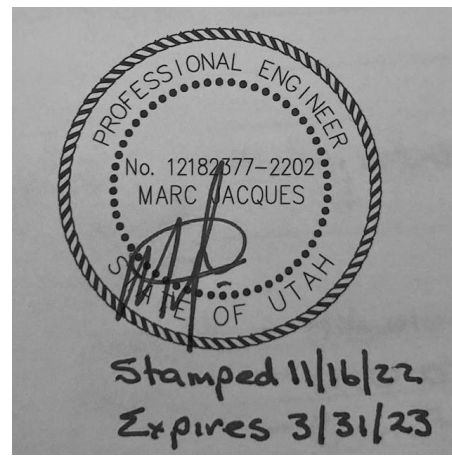
NUMBERED NOTES:

1. LUTRON WIRELESS PICO CONTROL SWITCH IS TO BE SUPPLIED AND INSTALLED FOR SHADE CONTROL.
2. SUPPLY AND INSTALL LUTRON RADIO RA2 SYSTEM TO PROVIDE PARTIAL LIGHTING CONTROL IN THE RESIDENTIAL UNITS. MASTER BEDROOM (DENOTED AS BED 1) AND ALL ROOMS WITH MORE THAN THREE (3) LIGHTING CONTROL ZONES OR LESS ARE TO BE CONTROLLED BY THE LUTRON RADIO RA2 SYSTEM. ALL ROOMS WITH THREE (3) LIGHTING CONTROL ZONES OR LESS ARE TO BE CONTROLLED BY LOCAL DIMMERS.
3. SUPPLY AND INSTALL CEILING MOUNTED JUNCTION BOX COMPLETE WITH CAPPED LIGHTING CIRCUIT WIRING FOR INSTALLATION OF FUTURE CLOSET LIGHT FIXTURE.
4. LIGHT FIXTURE LOCATED IN CLOSETS ARE TO BE CONTROLLED BY CLOSET DOOR JAM SWITCH.
5. REFER TO ARCHITECTURAL DRAWINGS AND ELEVATIONS FOR EXACT DIMENSION AND MOUNTING LOCATION OF LIGHT FIXTURE TYPE L04. COORDINATE WITH MILLWORK CONTRACTOR PRIOR TO INSTALLATION.



1 TOWER A/B - ELECTRICAL LIGHTING PLAN - UNIT E
SCALE: 1/4" = 1'-0"





Reserved for permit stamp

100 South Jackson Street, Suite 800
Seattle, Washington 98104 USA
+1 206 834 5870 olsonkundig.com

Olson Kundig

project
SOMMET BLANC
9300 Marasc Ave (B2 East Parcel)
Park City, Utah 84060



Aspen Group USA, LLC
PO Box 980022
Park City, Utah 84098

Pool Consultant
Cloward M20
2696 N University Ave, Suite 290
Provo, UT 84604

Landscape Architect
EPG Design
6948 South High Tech Drive, Suite 100
Midvale, Utah 84047

Specifications Writer
Friday Group
86 Mainelli Road
Middletown, VT

Code Consultant
Holmes
600 1st Avenue, Suite 200A
Seattle, WA 98104

Fire Protection Engineer
Jensen Hughes
One Research Drive, Suite 305C
Westborough, MA 01581

Vertical Transportation Consultant
Larch Bates
19515 North Creek Parkway, Suite 304
Bothell, WA 98011

Structural Engineer
Magnusson Klemencic Associates
1301 5th Ave, Suite 3200
Seattle, WA 98101

Lighting Designer
O-
1319 SE MLK Blvd, Suite 210
Portland, Oregon 97219

Building Envelope Consultant
RDH
2101 N 34th St
Seattle, WA 98103

Accessibility Consultant
Studio Pacifica
2144 Westlake Ave N, Suite F
Seattle, WA 98109

MEP Engineer
WSP USA
1001 Fourth Ave., Suite 3100
Seattle, WA 98154

principal architect _____
project manager _____
drawn by _____
checked by _____
job no. _____
date 11/18/2022

revisions:

no. date by

ISSUE FOR
CONSTRUCTION
11/18/2022

TOWER A/B ELECTRICAL
LIGHTING PLAN - UNIT F

E3.4.F

SHEET NOTES:

- A. DRAWINGS ARE INTENDED TO SHOW GENERAL ARRANGEMENT, DESIGN, AND EXTENT OF WORK AND ARE DIAGRAMMATIC. DRAWINGS ARE NOT INTENDED TO SHOW EXACT LOCATIONS EXCEPT WHERE DIMENSIONS ARE SHOWN. ELECTRICAL WORK IS SHOWN ON PLANS USING STANDARD INDUSTRY SYMBOLS. BEFORE ORDERING MATERIALS OR COMMENCEMENT WITH WORK, VERIFY MEASUREMENTS PERTAINING THERETO AND ASSUME RESPONSIBILITY THEREFOR. ANY SUBSTANTIAL DIFFERENCES BETWEEN DRAWINGS AND CONDITIONS IN THE FIELD SHALL BE SUBMITTED TO THE CONSTRUCTION MANAGER FOR CONSIDERATION BEFORE PROCEEDING WITH WORK.
- B. WORK PERFORMED INCLUDES LABOR, MATERIALS, AND EQUIPMENT REQUIRED TO INSTALL A COMPLETE ELECTRICAL SYSTEM AS INDICATED ON DRAWINGS AND SPECIFICATIONS.
- C. PROVIDE EXIT SIGNS AND CONNECT EXIT SIGNS AND LUMINAIRES NOTED AS EMERGENCY TO EMERGENCY POWER SOURCE AS INDICATED ON PLANS.
- D. REFER TO LUMINAIRE SCHEDULE FOR INFORMATION.
- E. FIXTURE CATALOG NUMBERS ARE SUBJECT TO CHANGE BY MANUFACTURER. VERIFY FIXTURE CATALOG NUMBERS FOR ACCURACY.
- F. VERIFY EQUIPMENT SIZES AND POWER REQUIREMENTS FOR EQUIPMENT PROVIDED BY OTHERS.
- G. ELECTRICAL CONDUITS IN FINISHED SPACES SHALL BE CONCEALED. COORDINATE WITH OTHER TRADES AND USE CHASES AND CEILING SPACES. LOCATIONS OF ELECTRICAL JUNCTION BOXES IN FINISHED SPACES SHALL BE APPROVED BY ARCHITECT PRIOR TO ROUGH-IN.
- H. COORDINATE REMOTE DRIVER MOUNTING LOCATIONS WITH ARCHITECT PRIOR TO ROUGH-IN.

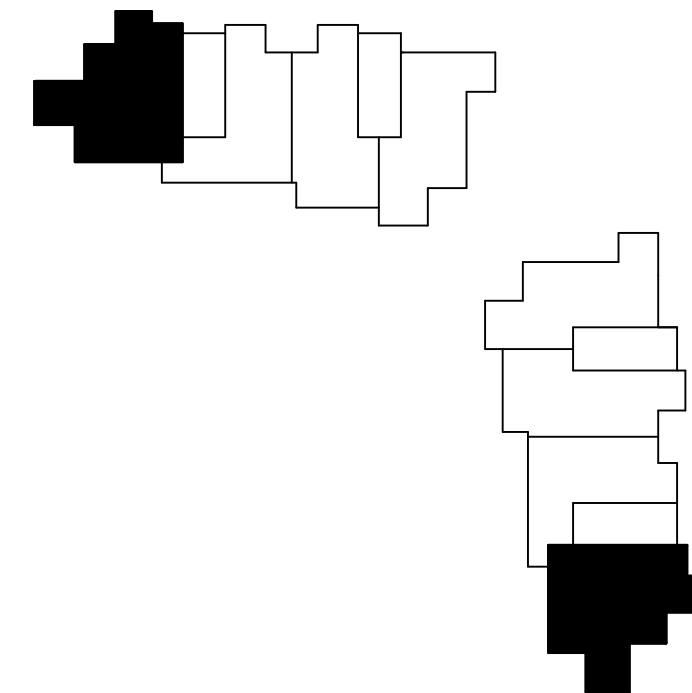


NUMBERED NOTES:

1. LUTRON WIRELESS PICO CONTROL SWITCH IS TO BE SUPPLIED AND INSTALLED FOR SHADE CONTROL.
2. LIGHT FIXTURE LOCATED IN CLOSETS ARE TO BE CONTROLLED BY CLOSET DOOR JAM SWITCH.
3. SUPPLY AND INSTALL LUTRON RADIO RA2 SYSTEM TO PROVIDE PARTIAL LIGHTING CONTROL IN THE RESIDENTIAL UNITS. MASTER BEDROOM (DENOTED AS BED 1) AND ALL ROOMS WITH MORE THAN THREE (3) LIGHTING CONTROL ZONES ARE TO BE CONTROLLED BY THE LUTRON RADIO RA2 SYSTEM. ALL ROOMS WITH THREE (3) LIGHTING CONTROL ZONES OR LESS ARE TO BE CONTROLLED BY LOCAL DIMMERS.
4. SUPPLY AND INSTALL CEILING MOUNTED JUNCTION BOX COMPLETE WITH CAPPED LIGHTING CIRCUIT WIRING FOR INSTALLATION OF FUTURE CLOSET LIGHT FIXTURE.
5. REFER TO ARCHITECTURAL DRAWINGS AND ELEVATIONS FOR EXACT DIMENSION AND MOUNTING LOCATION OF LIGHT FIXTURE TYPE L04. COORDINATE WITH MILLWORK CONTRACTOR PRIOR TO INSTALLATION.



1 TOWER A/B - ELECTRICAL LIGHTING PLAN - UNIT F
SCALE: 1/4" = 1'-0"



0 1' 2' 3' 4' 8' 12'