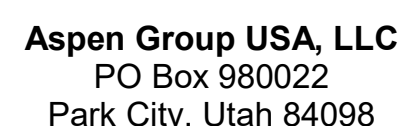


Olson Kundig

project:
SOMMET BLANC
9300 Marsac Ave (B2 East Parcel)
Park City, Utah 84060



principal architect _____
project manager _____
drawn by _____
checked by Checker
job no. _____
date 11/18/2022

[illegible]

no.	date	b
-----	------	---

ISSUE FOR
CONSTRUCTION
11/18/2022

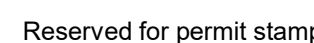
ELECTRICAL LIGHTING
PLAN TOWER AB LOBBY

E3.2AB.11



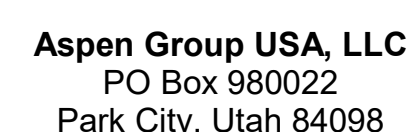
SHEET NOTES:

- A. DRAWINGS ARE INTENDED TO SHOW GENERAL ARRANGEMENT, DESIGN, AND EXTENT OF WORK AND ARE DIAGRAMMATIC. DRAWINGS ARE NOT INTENDED TO SHOW EXACT LOCATIONS EXCEPT WHERE DIMENSIONS ARE SHOWN. ELECTRICAL WORK IS SHOWN ON PLANS USING STANDARD SYMBOLS AND NOTATION. THE CONTRACTOR SHALL BE RESPONSIBLE FOR COMMENCEMENT WITH WORK. VERY MEASUREMENTS PERTAINING THERETO AND THE LOCATION OF THE WORK SHALL BE THE RESPONSIBILITY OF THE CONTRACTOR. ALL DRAWINGS AND CONDITIONS IN THE FIELD SHALL BE SUBMITTED TO THE CONSTRUCTION MANAGER FOR CONSIDERATION BEFORE PROCEEDING WITH WORK.
- B. THE CONTRACTOR SHALL BE RESPONSIBLE FOR OBTAINING ALL NECESSARY PERMITS AND TO INSTALL A COMPLETE ELECTRICAL SYSTEM AS INDICATED ON DRAWINGS AND SPECIFICATIONS. PROVIDE EXIST SIGNS AND CONNECT EXIST SIGNS AND LUMINAIRES NOTED AS EMERGENCY OR OTHER LOW VOLTAGE POWER. THE CONTRACTOR SHALL BE RESPONSIBLE FOR OBTAINING ALL NECESSARY PERMITS AND TO INSTALL A COMPLETE ELECTRICAL SYSTEM AS INDICATED ON DRAWINGS AND SPECIFICATIONS. PROVIDE EXIST SIGNS AND CONNECT EXIST SIGNS AND LUMINAIRES NOTED AS EMERGENCY OR OTHER LOW VOLTAGE POWER. THE CONTRACTOR SHALL BE RESPONSIBLE FOR OBTAINING ALL NECESSARY PERMITS AND TO INSTALL A COMPLETE ELECTRICAL SYSTEM AS INDICATED ON DRAWINGS AND SPECIFICATIONS. PROVIDE EXIST SIGNS AND CONNECT EXIST SIGNS AND LUMINAIRES NOTED AS EMERGENCY OR OTHER LOW VOLTAGE POWER.
- C. REFER TO LUMINAIRE SCHEDULE FOR INFORMATION.
- D. FIXTURE CATALOG NUMBERS ARE SUBJECT TO CHANGE. THE CONTRACTOR SHALL BE RESPONSIBLE FOR OBTAINING ALL NECESSARY PERMITS AND TO INSTALL A COMPLETE ELECTRICAL SYSTEM AS INDICATED ON DRAWINGS AND SPECIFICATIONS. PROVIDE EXIST SIGNS AND CONNECT EXIST SIGNS AND LUMINAIRES NOTED AS EMERGENCY OR OTHER LOW VOLTAGE POWER. THE CONTRACTOR SHALL BE RESPONSIBLE FOR OBTAINING ALL NECESSARY PERMITS AND TO INSTALL A COMPLETE ELECTRICAL SYSTEM AS INDICATED ON DRAWINGS AND SPECIFICATIONS. PROVIDE EXIST SIGNS AND CONNECT EXIST SIGNS AND LUMINAIRES NOTED AS EMERGENCY OR OTHER LOW VOLTAGE POWER.
- E. VERY EQUIPMENT SIZES AND POWER REQUIREMENTS FOR EQUIPMENT PROVIDED BY OTHERS.
- F. ELECTRICAL CONDITIONS IN FINISHED SPACES SHALL BE CONCEALED. COORDINATE WITH OTHER TRADES AND USE CHASES AND CEILING SPACES. LOCATIONS OF ELECTRICAL JUNCTION BOXES IN FINISHED SPACES SHALL BE APPROVED BY ARCHITECT PRIOR TO RENEWAL.



Olson Kundig

Project: **SOMMET BLANC**
33300 Marsac Ave (B2 East Parcel)
Park City, Utah 84060



MEP Engineer
WSP USA
1001 Fourth Ave., Suite 3100
Seattle, WA 98154

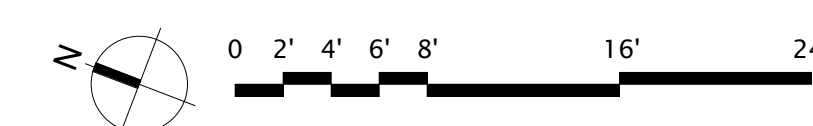
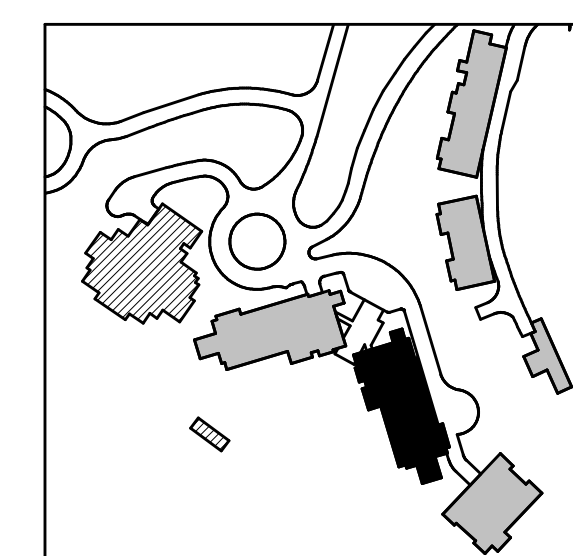
revisions:

no.	date	
-----	------	--

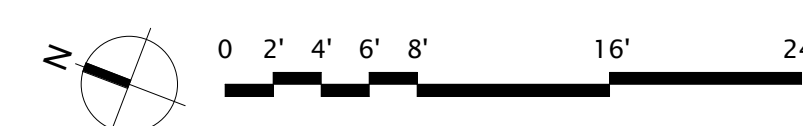
ISSUE FOR
CONSTRUCTION
11/18/2022

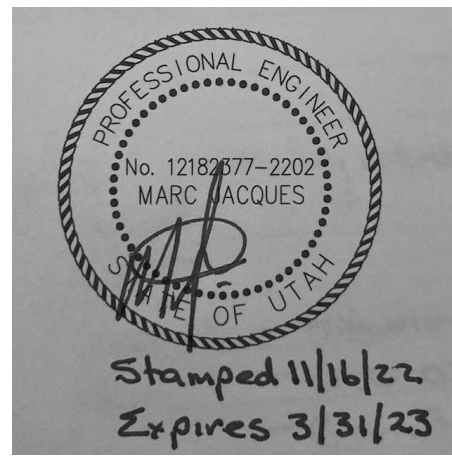
TOWER B - LVL B
ELECTRICAL LIGHTING
PLAN

E3.2B.01



1 TOWER B LEVEL B1 ELECTRICAL LIGHTING RCP
SCALE: 1/8" = 1'-0"





Reserved for permit stamp

139 South Jackson St., Suite 600
Seattle, Washington 98104 USA
+1 206 824 2670 olsonkundig.com

Olson Kundig

project
SOMMET BLANC
9300 Marasc Ave (B2 East Parcel)
Park City, Utah 84060



Aspen Group USA, LLC
PO Box 980022
Park City, Utah 84098

Pool Consultant
Cloward H2O
2696 N University Ave., Suite 290
Provo, UT 84604

Landscape Architect
EPG Design
6948 South High Tech Drive, Suite 100
Midvale, Utah 84047

Specifications Writer
Friday Group
86 Mainell Road
Middlebury, VT

Code Consultant
Holmes
600 1st Avenue, Suite 200A
Seattle, WA 98104

Fire Protection Engineer
Jensen Hughes
One Research Drive, Suite 305C
Westborough, MA 01581

Vertical Transportation Consultant
Larch Bates
19515 North Creek Parkway, Suite 304
Bothell, WA 98011

Structural Engineer
Magnusson Klemencic Associates
1301 5th Ave., Suite 3200
Seattle, WA 98101

Lighting Designer
O-
1319 SE MLK Blvd, Suite 210
Portland, Oregon 97219

Building Envelope Consultant
RDH
2101 N 34th St
Seattle, WA 98103

Accessibility Consultant
Studio Pacifica
2144 Westlake Ave N, Suite F
Seattle, WA 98109

MEP Engineer
WSP USA
1001 Fourth Ave., Suite 3100
Seattle, WA 98154

principal architect _____
project manager _____
drawn by _____
checked by _____
job no. _____
date 11/18/2022

revisions:

no. date by

ISSUE FOR
CONSTRUCTION
11/18/2022

TOWER B - LVL P2
ELECTRICAL LIGHTING
PLAN

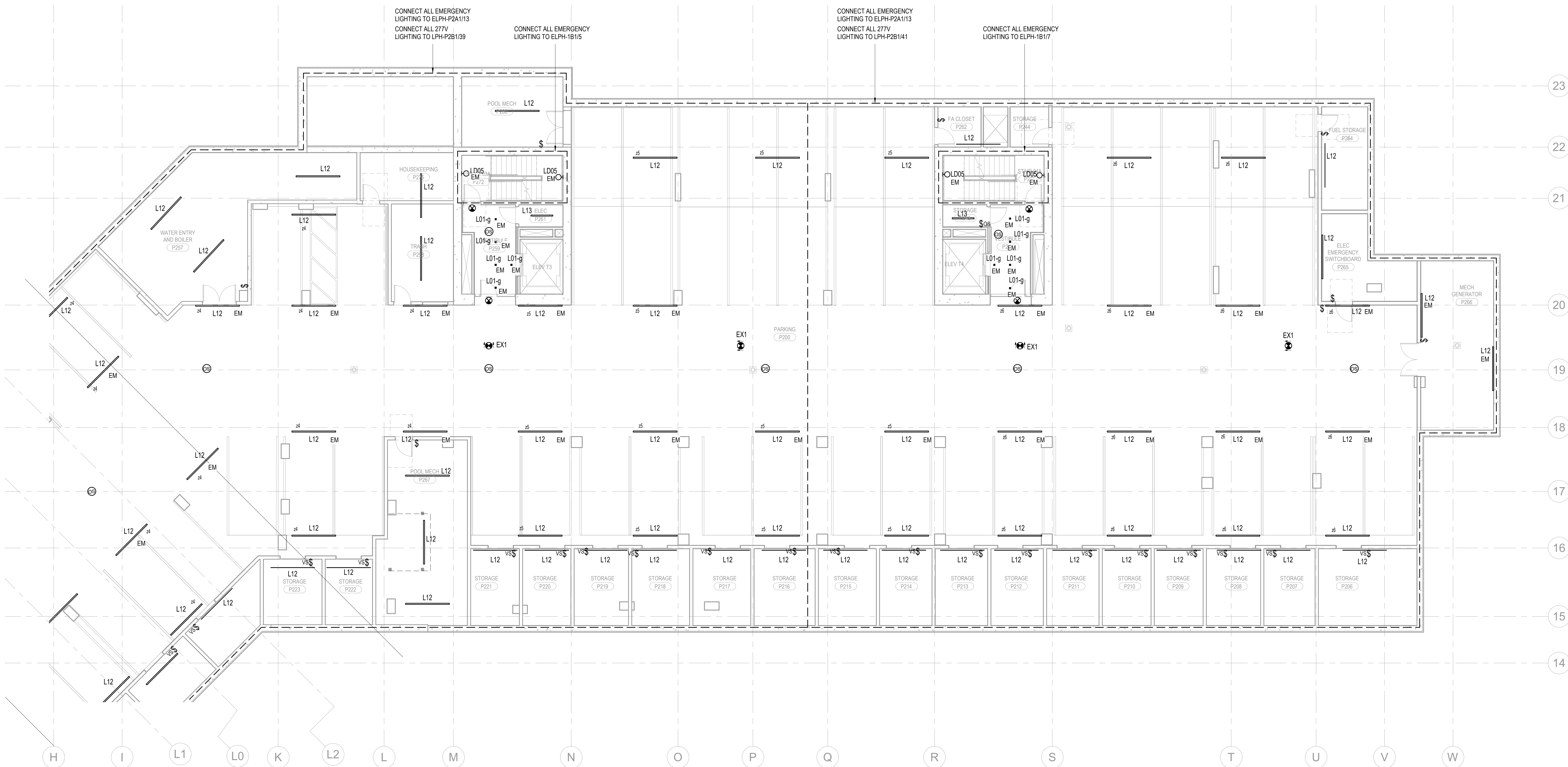
E3.2B.02

SHEET NOTES:

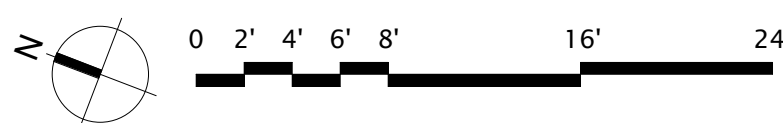
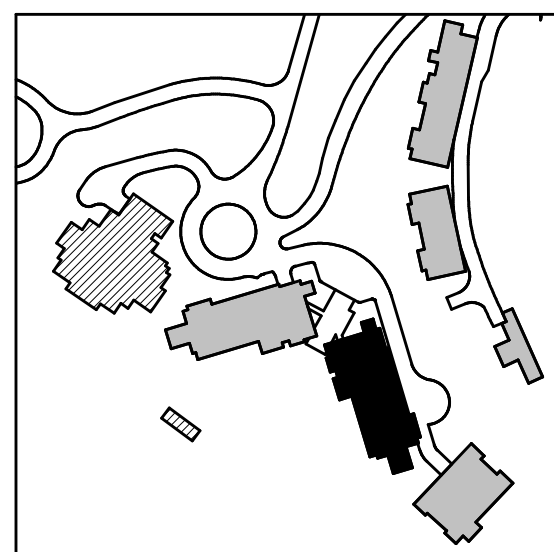
- DRAWINGS ARE INTENDED TO SHOW GENERAL ARRANGEMENT, DESIGN, AND EXTENT OF WORK AND ARE DIAGRAMMATIC. DRAWINGS ARE NOT INTENDED TO SHOW EXACT LOCATIONS EXCEPT WHERE DIMENSIONS ARE SHOWN. ELECTRICAL WORK IS SHOWN ON PLANS USING STANDARD INDUSTRY SYMBOLS. BEFORE ORDERING MATERIALS OR COMMENCEMENT WITH WORK, VERIFY MEASUREMENTS PERTAINING THERETO AND ASSUME RESPONSIBILITY THEREFOR. ANY SUBSTANTIAL DIFFERENCES BETWEEN DRAWINGS AND CONDITIONS IN THE FIELD SHALL BE SUBMITTED TO THE CONSTRUCTION MANAGER FOR CONSIDERATION BEFORE PROCEEDING WITH WORK.
- WORK PERFORMED INCLUDES LABOR, MATERIALS, AND EQUIPMENT REQUIRED TO INSTALL A COMPLETE ELECTRICAL SYSTEM AS INDICATED ON DRAWINGS AND SPECIFICATIONS.
- PROVIDE EXIT SIGNS AND CONNECT EXIT SIGNS AND LUMINAIRES NOTED AS EMERGENCY TO EMERGENCY POWER SOURCE AS INDICATED ON PLANS.
- REFER TO LUMINAIRE SCHEDULE FOR INFORMATION.
- FIXTURE CATALOG NUMBERS ARE SUBJECT TO CHANGE BY MANUFACTURER. VERIFY FIXTURE CATALOG NUMBERS FOR ACCURACY.
- VERIFY EQUIPMENT SIZES AND POWER REQUIREMENTS FOR EQUIPMENT PROVIDED BY OTHERS.
- ELECTRICAL CONDUITS IN FINISHED SPACES SHALL BE CONCEALED. COORDINATE WITH OTHER TRADES AND USE CHANGES AND CEILING SPACES. LOCATIONS OF ELECTRICAL JUNCTION BOXES IN FINISHED SPACES SHALL BE APPROVED BY ARCHITECT PRIOR TO ROUGH-IN.

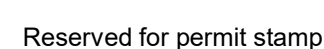


NUMBERED NOTES:



1 TOWER B - PARKING LEVEL 2 ELECTRICAL LIGHTING RCP
SCALE: 1/8" = 1'-0"

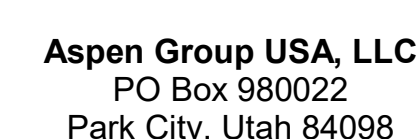




159 South Jackson St, Suite 800
Seattle, Washington 98104 USA
1 206 624 5670 olsonkundig.com

Olson Kundig

Project: **SOMMET BLANC**
3300 Marsac Ave (B2 East Parcel)
Park City, Utah 84060



Pool Consultant
Cloward H20
2696 N University Ave, Suite 290
Provo, UT 84604

Landscape Architect
EPG Design
6949 South High Tech Drive, Suite 10
Midvale, Utah 84047

Specifications Writer
Friday Group
88 Mainelli Road
Middlebury, VT

Code Consultant
Holmes
600 1st Avenue, Suite 200A
Seattle, WA 98104

Fire Protection Engineer
Jensen Hughes
One Research Drive, Suite 305C
Westborough, MA 01581

Vertical Transportation Consultant
Lerch Bates
19515 North Creek Parkway, Suite 300
Bothell, WA 98011

Structural Engineer
Magnusson Klemencic Associates
1301 5th Ave, Suite 3200
Seattle, WA 98101

Lighting Designer
O-
1319 SE MLK Blvd, Suite 210
Portland, Oregon 97219

Building Envelope Consultant
RDH
2101 N 34th St
Seattle, WA 98103

Accessibility Consultant
Studio Pacifica
2144 Westlake Ave N, Suite F
Seattle, WA 98109

MEP Engineer
WSP USA
1001 Fourth Ave., Suite 3100
Seattle, WA 98154

principal architect _____
project manager _____
drawn by _____
checked by Checker
job no. _____
date 11/18/2022

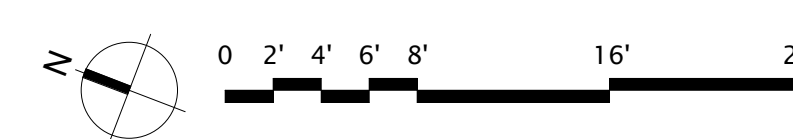
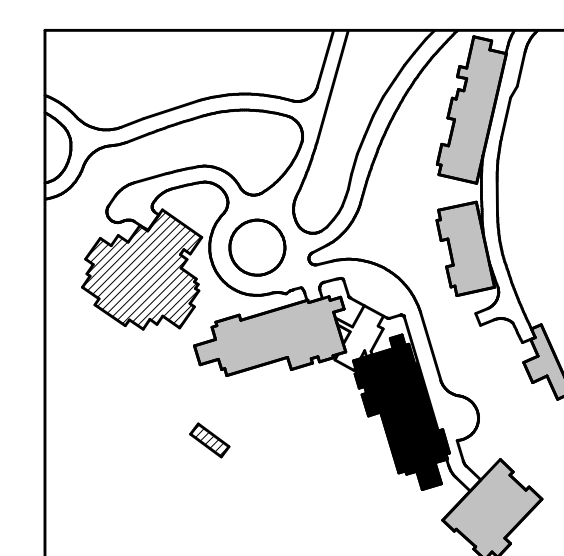
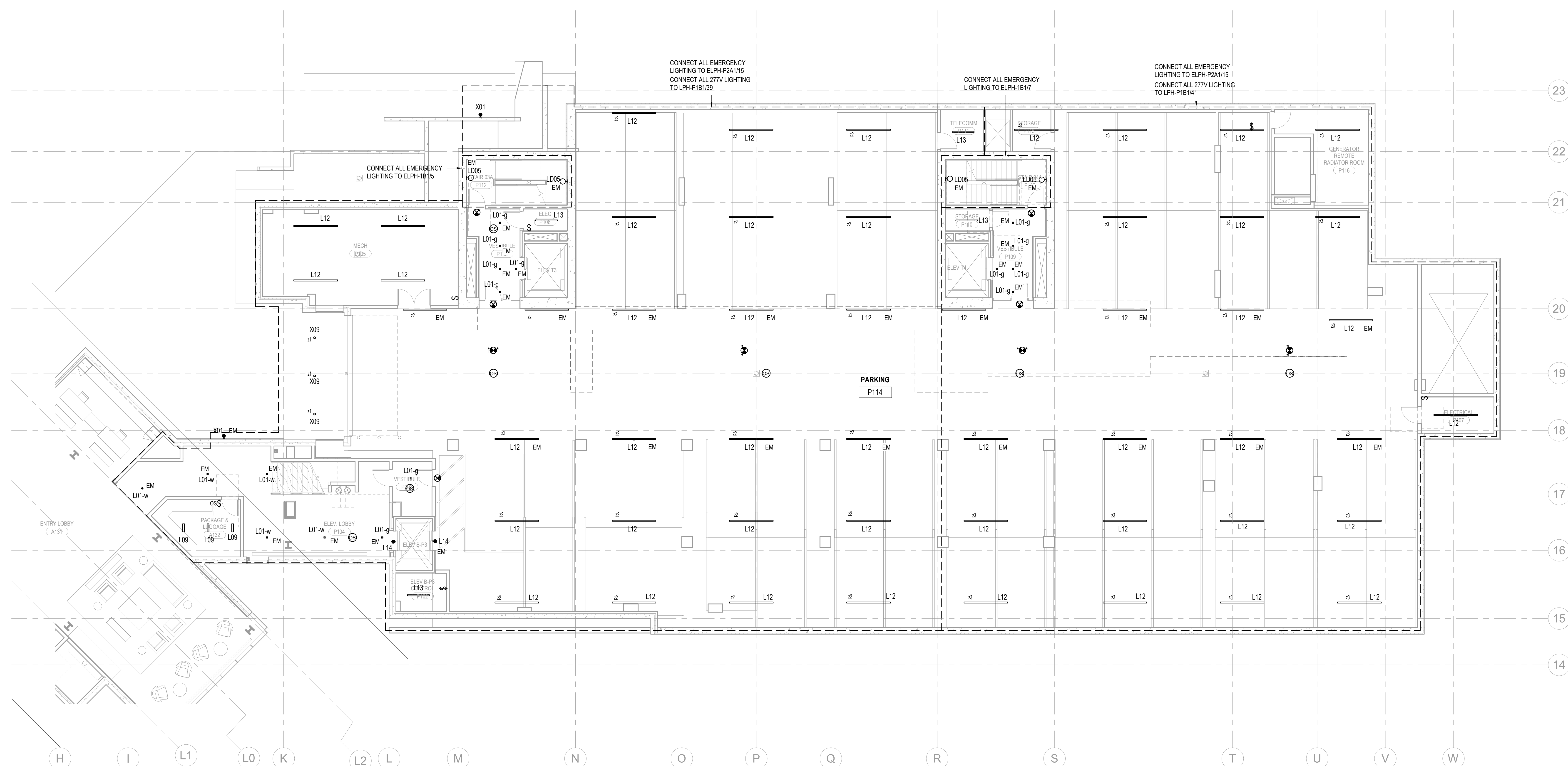
revisions:

no.	date	
-----	------	--

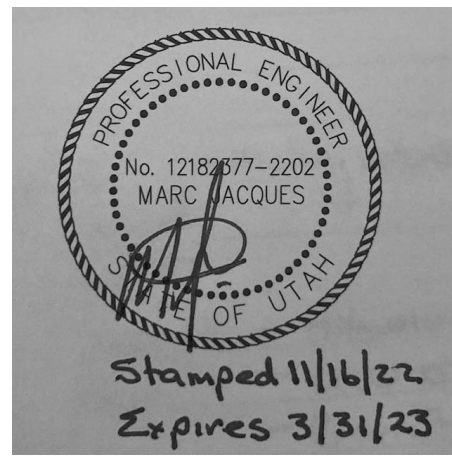
ISSUE FOR
CONSTRUCTION
11/18/2022

TOWER B - LVL P1
ELECTRICAL LIGHTING
PLAN

E3.2B.03



1 TOWER B - PARKING LEVEL 1 ELECTRICAL LIGHTING RCP
SCALE: 1/8" = 1'-0"



Reserved for permit stamp

100 South Jackson St., Suite 600
Seattle, Washington 98104 USA
+1 206 834 3870 olsonkundig.com

Olson Kundig

project
SOMMET BLANC
9300 Marasc Ave (B2 East Parcel)
Park City, Utah 84060

ASPEN GROUP
Aspen Group USA, LLC
PO Box 980022
Park City, Utah 84098

Pool Consultant
Cloward H2O
2696 N University Ave., Suite 290
Provo, UT 84604

Landscape Architect
EPG Design
6949 South High Tech Drive, Suite 100
Midvale, Utah 84047

Specifications Writer
Friday Group
86 Marrett Road
Middsbury, VT

Code Consultant
Holmes
600 1st Avenue, Suite 200A
Seattle, WA 98104

Fire Protection Engineer
Jensen Hughes
One Research Drive, Suite 305C
Westborough, MA 01581

Vertical Transportation Consultant
Larch Bates
19515 North Creek Parkway, Suite 304
Bothell, WA 98011

Structural Engineer
Magnusson Klemencic Associates
1301 5th Ave., Suite 3200
Seattle, WA 98101

Lighting Designer
O-
1319 SE MLK Blvd, Suite 210
Portland, Oregon 97219

Building Envelope Consultant
RDH
2101 N 34th St
Seattle, WA 98103

Accessibility Consultant
Studio Pacifica
2144 Westlake Ave N, Suite F
Seattle, WA 98109

MEP Engineer
WSP USA
1001 Fourth Ave., Suite 3100
Seattle, WA 98154

principal architect _____
project manager _____
drawn by _____
checked by _____
job no. _____
date 11/18/2022

revisions:

no. date by

ISSUE FOR
CONSTRUCTION
11/18/2022

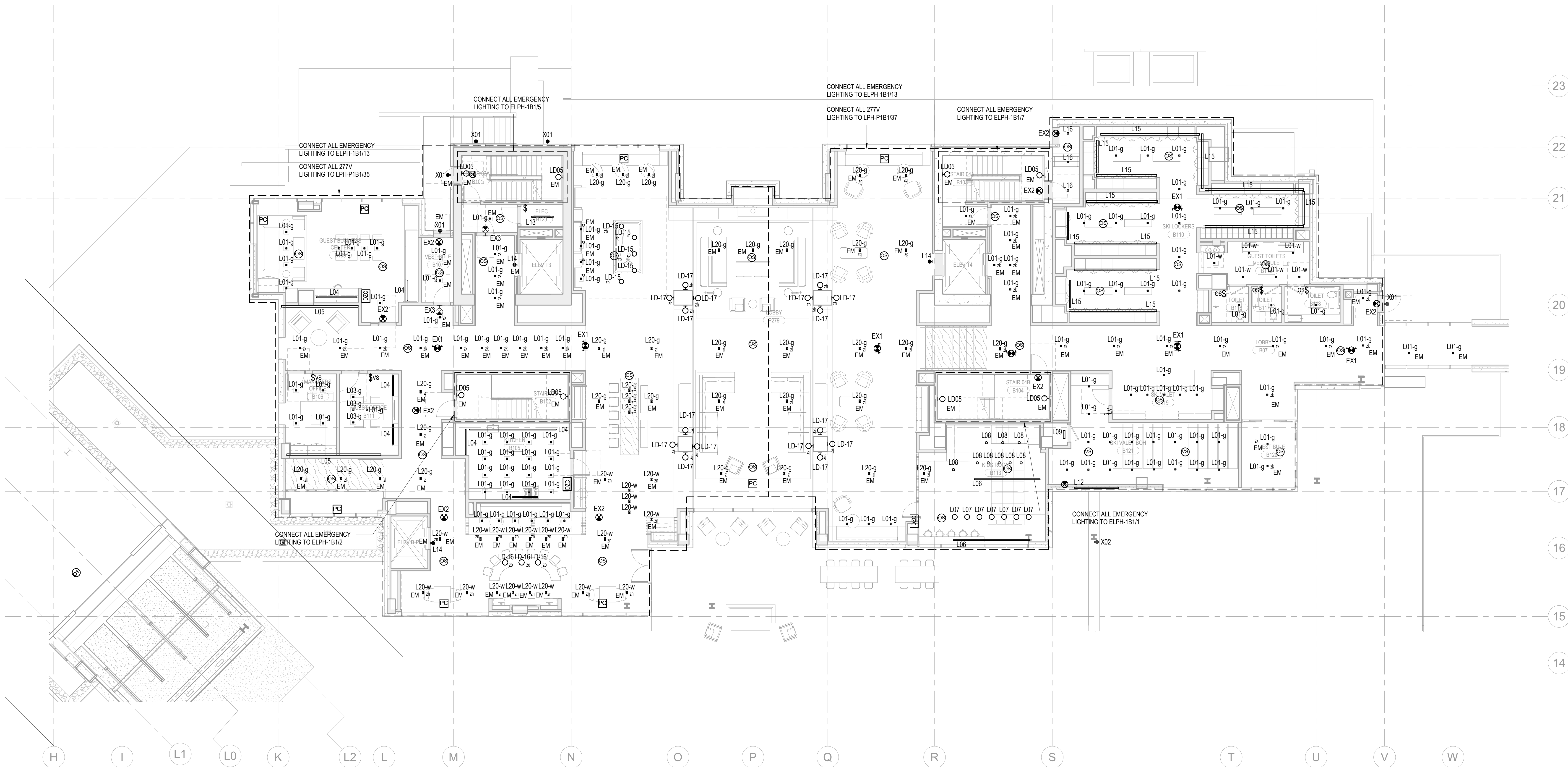
TOWER B - LVL 1
ELECTRICAL LIGHTING
PLAN

E3.2B.11

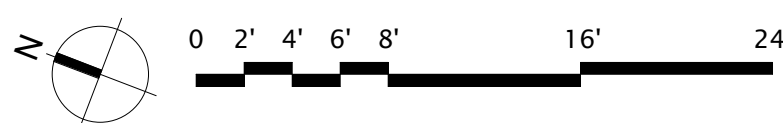
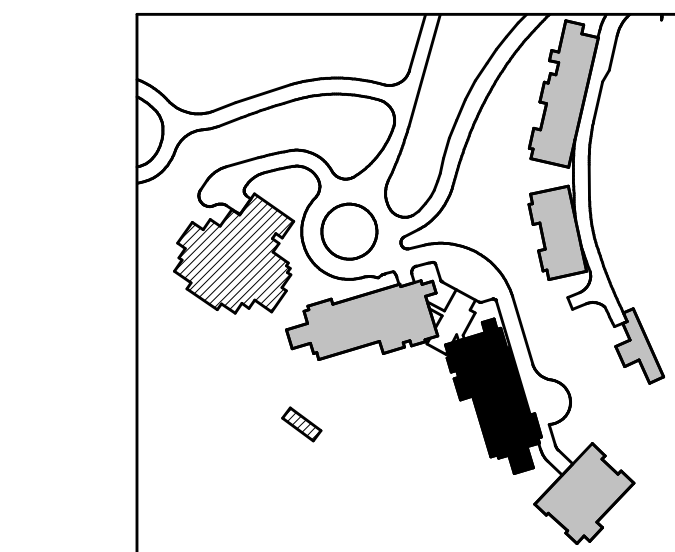
SHEET NOTES:

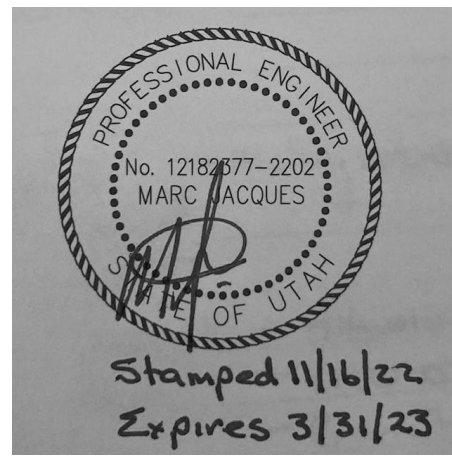
- DRAWINGS ARE INTENDED TO SHOW GENERAL ARRANGEMENT, DESIGN, AND EXTENT OF WORK AND ARE DIAGRAMMATIC. DRAWINGS ARE NOT INTENDED TO SHOW EXACT LOCATIONS EXCEPT WHERE DIMENSIONS ARE SHOWN. ELECTRICAL WORK IS SHOWN ON PLANS USING STANDARD INDUSTRY SYMBOLS. BEFORE ORDERING MATERIALS OR COMMENCEMENT WITH WORK, VERIFY MEASUREMENTS PERTAINING THERETO AND ASSUME RESPONSIBILITY THEREFOR. ANY SUBSTANTIAL DIFFERENCES BETWEEN DRAWINGS AND CONDITIONS IN THE FIELD SHALL BE SUBMITTED TO THE CONSTRUCTION MANAGER FOR CONSIDERATION BEFORE PROCEEDING WITH WORK.
- WORK PERFORMED INCLUDES LABOR, MATERIALS, AND EQUIPMENT REQUIRED TO INSTALL A COMPLETE ELECTRICAL SYSTEM AS INDICATED ON DRAWINGS AND SPECIFICATIONS.
- PROVIDE EXIT SIGNS AND CONNECT EXIT SIGNS AND LUMINAIRES NOTED AS EMERGENCY TO EMERGENCY POWER SOURCE AS INDICATED ON PLANS.
- REFER TO LUMINAIRE SCHEDULE FOR INFORMATION.
- FIXTURE CATALOG NUMBERS ARE SUBJECT TO CHANGE BY MANUFACTURER. VERIFY FIXTURE CATALOG NUMBERS FOR ACCURACY.
- VERIFY EQUIPMENT SIZES AND POWER REQUIREMENTS FOR EQUIPMENT PROVIDED BY OTHERS.
- ELECTRICAL CONDUITS IN FINISHED SPACES SHALL BE CONCEALED. COORDINATE WITH OTHER TRADES AND USE CHASES AND CEILING SPACES. LOCATIONS OF ELECTRICAL JUNCTION BOXES IN FINISHED SPACES SHALL BE APPROVED BY ARCHITECT PRIOR TO ROUGH-IN.

NUMBERED NOTES:



1 TOWER B - LEVEL 1 ELECTRICAL LIGHTING RCP
SCALE: 1/8" = 1'-0"





Reserved for permit stamp

109 South Jackson St., Suite 600
Seattle, Washington 98104 USA
+1 206 824 2670 olsonkundig.com

Olson Kundig

project
SOMMET BLANC
9300 Marzac Ave (B2 East Parcel)
Park City, Utah 84060



Aspen Group USA, LLC
PO Box 980022
Park City, Utah 84098

Pool Consultant
Cloward H2O
2696 N University Ave., Suite 290
Provo, UT 84604

Landscape Architect
EPG Design
6948 South High Tech Drive, Suite 100
Midvale, Utah 84047

Specifications Writer
Friday Group
86 Marrett Road
Middlebury, VT

Code Consultant
Holmes
600 1st Avenue, Suite 200A
Seattle, WA 98104

Fire Protection Engineer
Jensen Hughes
One Research Drive, Suite 305C
Westborough, MA 01581

Vertical Transportation Consultant
Larch Bates
19515 North Creek Parkway, Suite 304
Bothell, WA 98011

Structural Engineer
Magnusson Klemencic Associates
1301 5th Ave., Suite 3200
Seattle, WA 98101

Lighting Designer
O
1319 SE MLK Blvd, Suite 210
Portland, Oregon 97219

Building Envelope Consultant
RDH
2101 N 34th St
Seattle, WA 98103

Accessibility Consultant
Studio Pacifica
2144 Westlake Ave N, Suite F
Seattle, WA 98109

MEP Engineer
WSP USA
1001 Fourth Ave., Suite 3100
Seattle, WA 98154

principal architect _____
project manager _____
drawn by _____
checked by _____
job no. _____
date 11/18/2022

revisions:

no. date by

ISSUE FOR CONSTRUCTION
11/18/2022

TOWER B - LVL 2
ELECTRICAL LIGHTING
PLAN

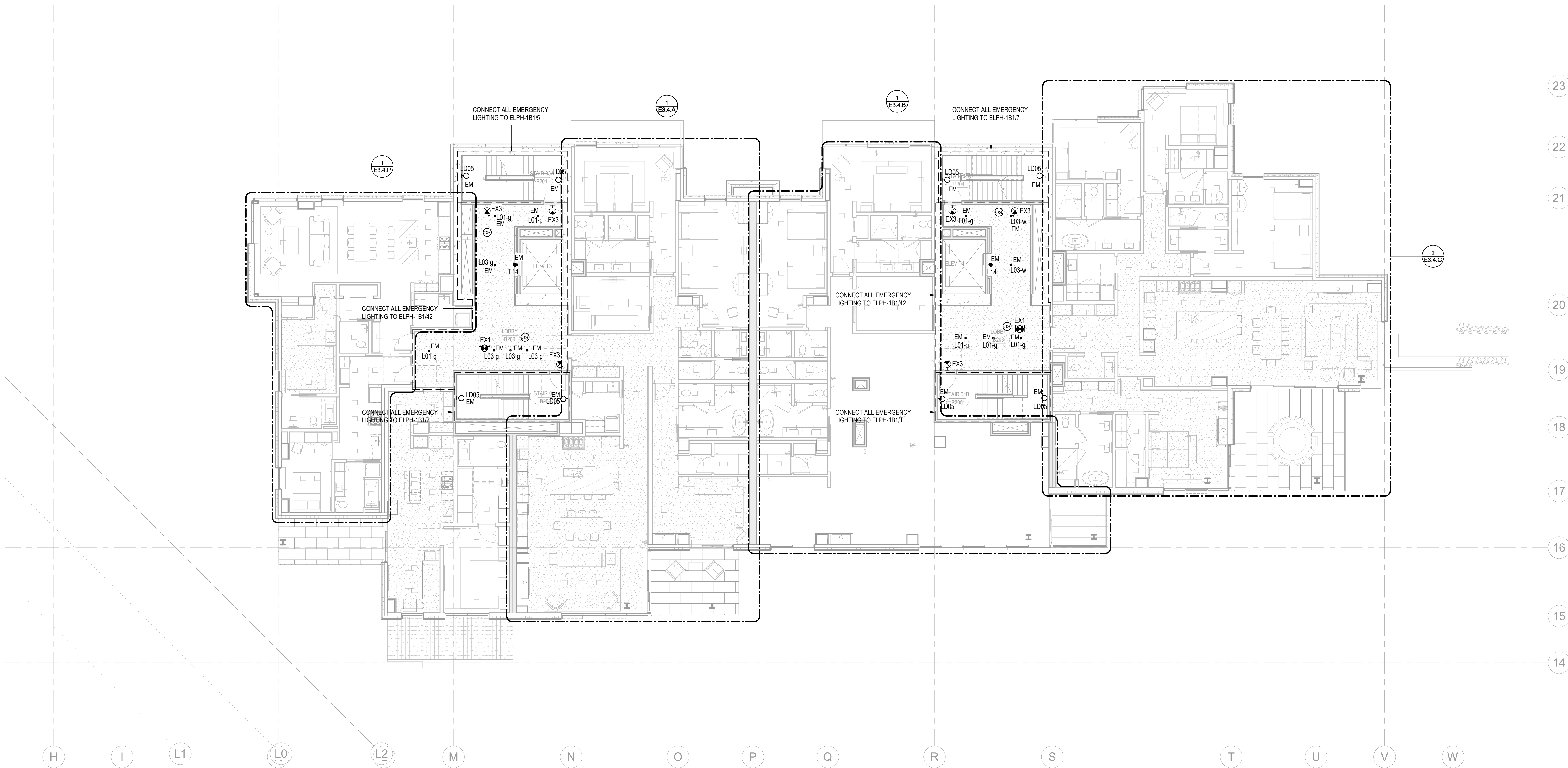
E3.2B.12

SHEET NOTES:

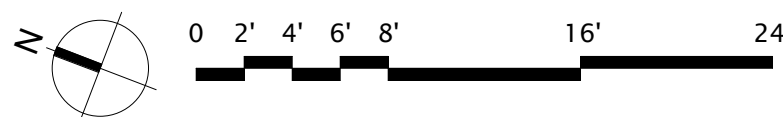
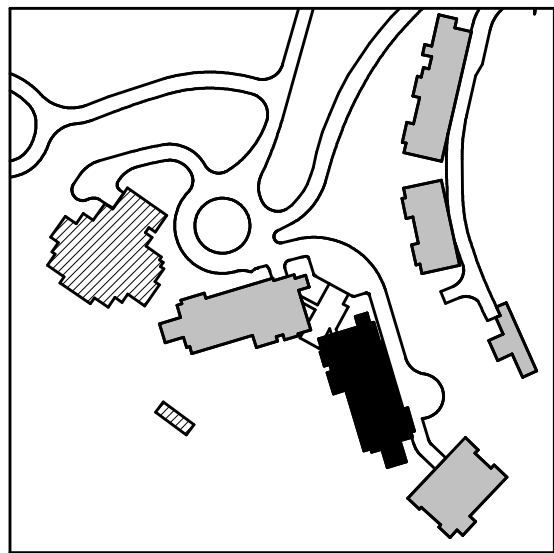
- A. DRAWINGS ARE INTENDED TO SHOW GENERAL ARRANGEMENT, DESIGN, AND EXTENT OF WORK AND ARE DIAGRAMMATIC. DRAWINGS ARE NOT INTENDED TO SHOW EXACT LOCATIONS EXCEPT WHERE DIMENSIONS ARE SHOWN. ELECTRICAL WORK IS SHOWN ON PLANS USING STANDARD INDUSTRY SYMBOLS. BEFORE ORDERING MATERIALS OR COMMENCEMENT WITH WORK, VERIFY MEASUREMENTS PERTAINING THERETO AND ASSUME RESPONSIBILITY THEREFOR. ANY SUBSTANTIAL DIFFERENCES BETWEEN DRAWINGS AND CONDITIONS IN THE FIELD SHALL BE SUBMITTED TO THE CONSTRUCTION MANAGER FOR CONSIDERATION BEFORE PROCEEDING WITH WORK.
- B. WORK PERFORMED INCLUDES LABOR, MATERIALS, AND EQUIPMENT REQUIRED TO INSTALL A COMPLETE ELECTRICAL SYSTEM AS INDICATED ON DRAWINGS AND SPECIFICATIONS.
- C. PROVIDE EXIT SIGNS AND CONNECT EXIT SIGNS AND LUMINAIRES NOTED AS EMERGENCY TO EMERGENCY POWER SOURCE AS INDICATED ON PLANS.
- D. REFER TO LUMINAIRE SCHEDULE FOR INFORMATION.
- E. FIXTURE CATALOG NUMBERS ARE SUBJECT TO CHANGE BY MANUFACTURER. VERIFY FIXTURE CATALOG NUMBERS FOR ACCURACY.
- F. VERIFY EQUIPMENT SIZES AND POWER REQUIREMENTS FOR EQUIPMENT PROVIDED BY OTHERS.
- G. ELECTRICAL CONDUITS IN FINISHED SPACES SHALL BE CONCEALED. COORDINATE WITH OTHER TRADES AND USE CHASES AND CEILING SPACES. LOCATIONS OF ELECTRICAL JUNCTION BOXES IN FINISHED SPACES SHALL BE APPROVED BY ARCHITECT PRIOR TO ROUGH-IN.

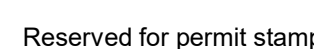


NUMBERED NOTES:



1 TOWER B - LEVEL 2 ELECTRICAL LIGHTING RCP
SCALE: 1/8" = 1'-0"

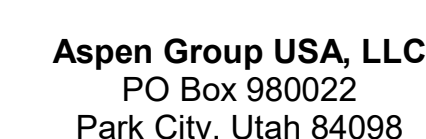




159 South Jackson St., Suite 800
Seattle, Washington 98104 USA
206.424.5670 clearwater.com

Olson Kundig

Project: **SOMMET BLANC**
3300 Marsac Ave (B2 East Parcel)
Park City, Utah 84060



Pool Consultant
Cloward H20
2696 N University Ave, Suite 290
Provo, UT 84604

Landscape Architect
EPG Design
6949 South High Tech Drive, Suite 10
Midvale, Utah 84047

Specifications Writer
Friday Group
88 Mainelli Road
Middlebury, VT

Code Consultant
Holmes
600 1st Avenue, Suite 200A
Seattle, WA 98104

Fire Protection Engineer
Jensen Hughes
One Research Drive, Suite 305C
Westborough, MA 01581

Vertical Transportation Consultant
Lerch Bates
19515 North Creek Parkway, Suite 300
Bothell, WA 98011

Structural Engineer
Magnusson Klemencic Associates
1301 5th Ave, Suite 3200
Seattle, WA 98101

Lighting Designer
O.
1319 SE MLK Blvd, Suite 210
Portland, Oregon 97219

Building Envelope Consultant
RDH
2101 N 34th St
Seattle, WA 98103

Accessibility Consultant
Studio Pacifica
2144 Westlake Ave N, Suite F
Seattle, WA 98109

MEP Engineer
WSP USA
1001 Fourth Ave., Suite 3100
Seattle, WA 98154

principal architect _____
project manager _____
drawn by _____
checked by Checker
job no. _____
date 11/18/2022

revisions

no.	date	b
-----	------	---

ISSUE FOR
CONSTRUCTION
11/18/2022

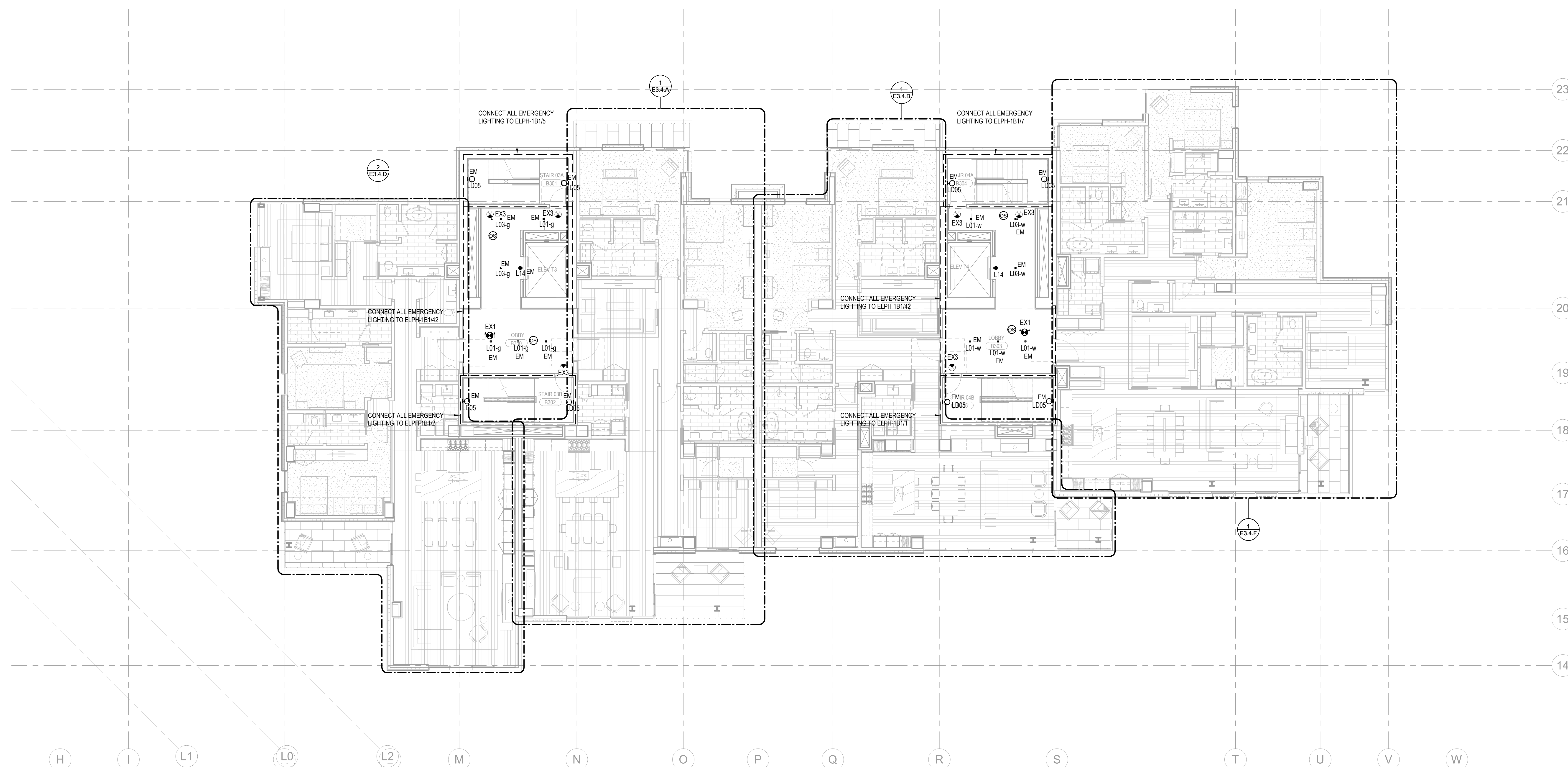
TOWER B - LVL 3
ELECTRICAL LIGHTING
PLAN

E3.2B.13

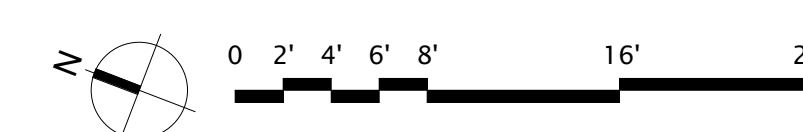
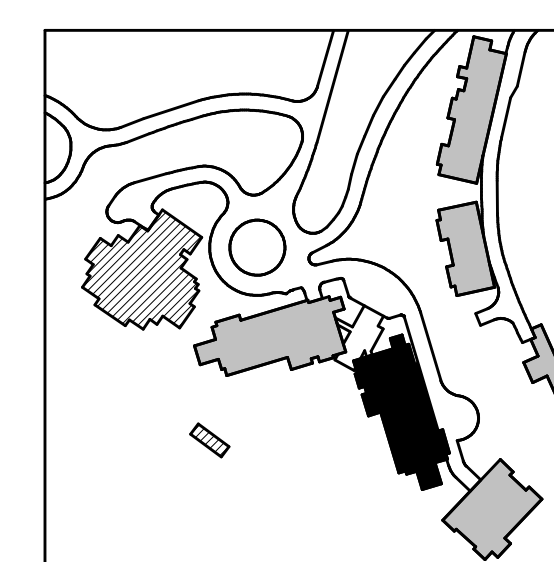
SHEET NOTES:

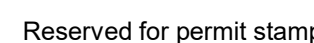
- A. DRAWINGS ARE INTENDED TO SHOW GENERAL ARRANGEMENT, DESIGN, AND EXTENT OF WORK AND ARE DIAGRAMMATIC. DRAWINGS ARE NOT INTENDED TO SHOW EXACT LOCATIONS EXCEPT WHERE DIMENSIONS ARE SHOWN. ELECTRICAL WORK IS SHOWN AS CLOSELY AS POSSIBLE TO THE CENTER OF THE SPACE OCCUPIED BY THE EQUIPMENT.
- B. COMMENCEMENT WITH WORK. VERIFY MEASUREMENTS PERTAINING THERETO AND CORRECT AS NECESSARY. VERIFY THE LOCATION OF ALL EXISTING ELECTRICAL WORK.
- C. DRAWINGS AND CONDITIONS IN THE FIELD SHALL BE SUBMITTED TO THE CONSTRUCTION MANAGER FOR CONSIDERATION BEFORE PROCEEDING WITH WORK.
- D. ELECTRICAL PERMITS AND INSPECTIONS. THE CONTRACTOR SHALL BE REQUIRED TO INSTALL A COMPLETE ELECTRICAL SYSTEM AS INDICATED ON DRAWINGS AND SPECIFICATIONS. PROVIDE EXIST SIGNS AND CONNECT EXIST SIGNS AND LUMINAIRES NOTED AS EMERGENCY LIGHTS TO EMERGENCY POWER SUPPLY.
- E. REFER TO LUMINAIRE SCHEDULE FOR INFORMATION.
- F. FUTURE CATALOG NUMBERS ARE SUBJECT TO CHANGE BY MANUFACTURER. VERIFY THE FUTURE CATALOG NUMBERS FOR THE LUMINAIRES.
- G. VERIFY EQUIPMENT TYPES AND POWER REQUIREMENTS FOR EQUIPMENT PROVIDED BY OTHERS.
- H. ELECTRICAL CONDUITS IN FINISHED SPACES SHALL BE CONCEALED. COORDINATE WITH OTHER TRADES AND USE SPACES AND CEILING SPACES. LOCATIONS OF ELECTRICAL JUNCTION BOXES IN FINISHED SPACES SHALL BE APPROVED BY ARCHITECT PRIOR TO INSTALLATION.

NUMBERED NOTES:



1 TOWER B - LEVEL 3 ELECTRICAL LIGHTING RCP
SCALE: 1/8" = 1'-0"

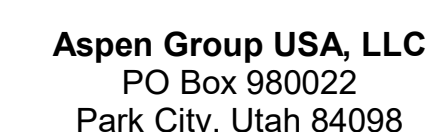




159 South Jackson St., Suite 800
Seattle, Washington 98104 USA
206.424.5670 clearwater.com

Olson Kundig

Project: **SOMMET BLANC**
3300 Marsac Ave (B2 East Parcel)
Park City, Utah 84060



Pool Consultant
Cloward H20
2696 N University Ave, Suite 290
Provo, UT 84604

Landscape Architect
EPG Design
6949 South High Tech Drive, Suite 10
Midvale, Utah 84047

Specifications Writer
Friday Group
88 Mainelli Road
Middlebury, VT

Code Consultant
Holmes
600 1st Avenue, Suite 200A
Seattle, WA 98104

Fire Protection Engineer
Jensen Hughes
One Research Drive, Suite 305C
Westborough, MA 01581

Vertical Transportation Consultant
Lerch Bates
19515 North Creek Parkway, Suite 300
Bothell, WA 98011

Structural Engineer
Magnusson Klemencic Associates
1301 5th Ave, Suite 3200
Seattle, WA 98101

Lighting Designer
O-
1319 SE MLK Blvd, Suite 210
Portland, Oregon 97219

Building Envelope Consultant
RDH
2101 N 34th St
Seattle, WA 98103

Accessibility Consultant
Studio Pacifica
2144 Westlake Ave N, Suite F
Seattle, WA 98109

MEP Engineer
WSP USA
1001 Fourth Ave., Suite 3100
Seattle, WA 98154

principal architect_____

drawn by _____

checked by Checker
job no.

date 11/18/2022

no.	date	
-----	------	--

ISSUE FOR
CONSTRUCTION

11/18/2022

POWER B - LVL 4
ELECTRICAL LIGHTING

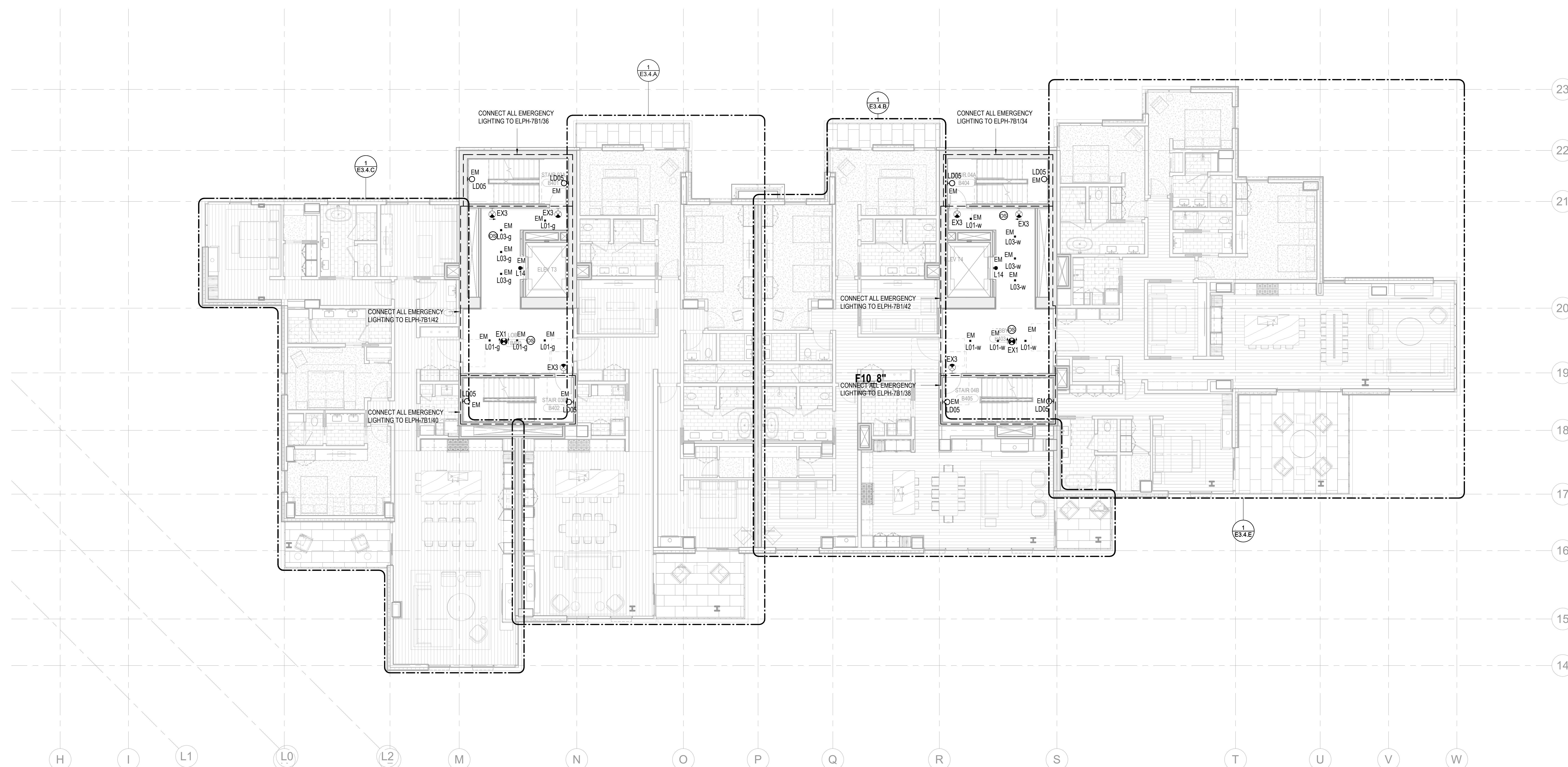
FIGURE 1

LS.2D.14

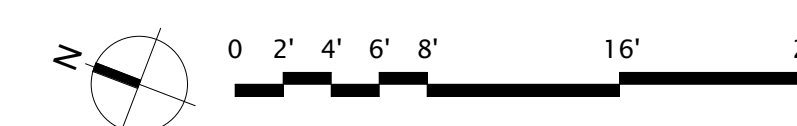
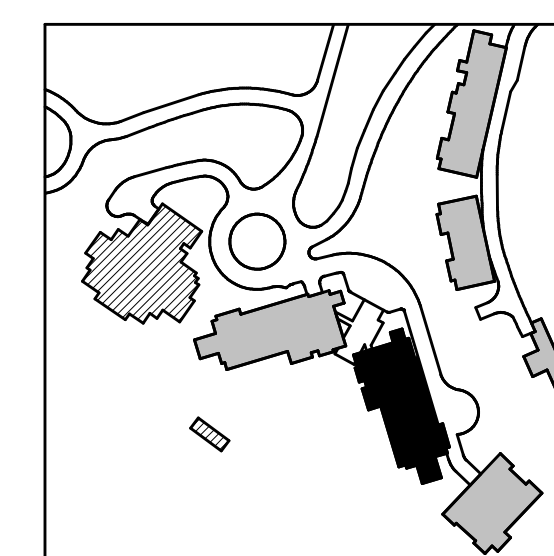
SHEET NOTES:

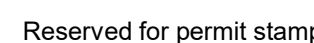
- A. DRAWINGS ARE INTENDED TO SHOW GENERAL ARRANGEMENT, DESIGN, AND EXTENT OF WORKS AND ARE DIAGNOSTIC. DRAWINGS ARE NOT INTENDED TO SHOW EXACT LOCATIONS EXCEPT WHERE DIMENSIONS ARE SHOWN. ELECTRICAL WORK IS SHOWN ON PLANS USING STANDARD SYMBOLS AND NOTATION. THE CONTRACTOR SHALL BE RESPONSIBLE FOR COMMENCEMENT WITH WORK. VERIFY MEASUREMENTS PERTAINING THERETO AND CORRECT ANY DISCREPANCIES. THE CONTRACTOR SHALL BE RESPONSIBLE FOR THE AGREEMENT BETWEEN DRAWINGS AND CONDITIONS. THE FIELD SHALL BE SUBMITTED TO THE PROJECT SUPERVISOR/ MANAGER FOR CONSIDERATION BEFORE PROCEEDING WITH WORK.
- B. THE CONTRACTOR SHALL BE RESPONSIBLE FOR THE DESIGN OF THE ELECTRICAL SYSTEM REQUIRED TO COMPLETE THE ELECTRICAL SYSTEM AS INDICATED ON DRAWINGS AND SPECIFICATIONS. PROVIDE EXT SIGNS AND CONNECT EXT SIGNS AND LUMINAIRES NOTED AS EMERGENCY EXIT EMERGENCY COVERED BY THE ELECTRICAL CODE.
- C. REFER TO LUMINAIRE SCHEDULE FOR INFORMATION.
- D. FUTURE CATALOG NUMBERS ARE SUBJECT TO CHANGE BY MANUFACTURER. VERIFY CURRENT CATALOG NUMBERS AND SPECIFICATIONS FOR THE EQUIPMENT.
- E. VERIFY EQUIPMENT TYPES AND POWER REQUIREMENTS FOR EQUIPMENT PROVIDED BY OTHERS.
- F. ELECTRICAL CONDUITS IN FINISHED SPACES SHALL BE CONCEALED. COORDINATE WITH OTHER TRADES AND USE CHASES AND CEILING SPACES. LOCATIONS OF ELECTRICAL JUNCTION BOXES IN FINISHED SPACES SHALL BE APPROVED BY ARCHITECT PRIOR TO ROOFING.

NUMBERED NOTES:



1 TOWER B - LEVEL 4 ELECTRICAL LIGHTING RCP
SCALE: 1/8" = 1'-0"





159 South Jackson St., Suite 800
Seattle, Washington 98104 USA
206.424.5670 clearwater.com

Olson Kundig

Project: **SOMMET BLANC**
3300 Marsac Ave (B2 East Parcel)
Park City, Utah 84060



Aspen Group USA, LLC
PO Box 980022
Park City, Utah 84098

Pool Consultant
Cloward H2O
2696 N University Ave., Suite 290
Provo, UT 84604

Landscape Architect
EPG Design
6949 South High Tech Drive, Suite 100
Midvale, Utah 84047

Specifications Writer
Friday Group
88 Mainelli Road
Middlebury, VT

Code Consultant
Holmes
600 1st Avenue, Suite 200A
Seattle, WA 98104

Fire Protection Engineer
Jensen Hughes
One Research Drive, Suite 305C
Westborough, MA 01581

Vertical Transportation Consultant
Lerch Bates
19515 North Creek Parkway, Suite 3
Bothell, WA 98011

Structural Engineer
Magnusson Klemencic Associates
1301 5th Ave, Suite 3200
Seattle, WA 98101

Lighting Designer
O-
1319 SE MLK Blvd, Suite 210
Portland, Oregon 97219

Building Envelope Consultant
RDH
2101 N 34th St
Seattle, WA 98103

Accessibility Consultant
Studio Pacifica
2144 Westlake Ave N, Suite F
Seattle, WA 98109

MEP Engineer
WSP USA
1001 Fourth Ave., Suite 3100
Seattle, WA 98154

principal architect _____
project manager _____
drawn by _____
checked by Checker
job no. _____
date 11/18/2022

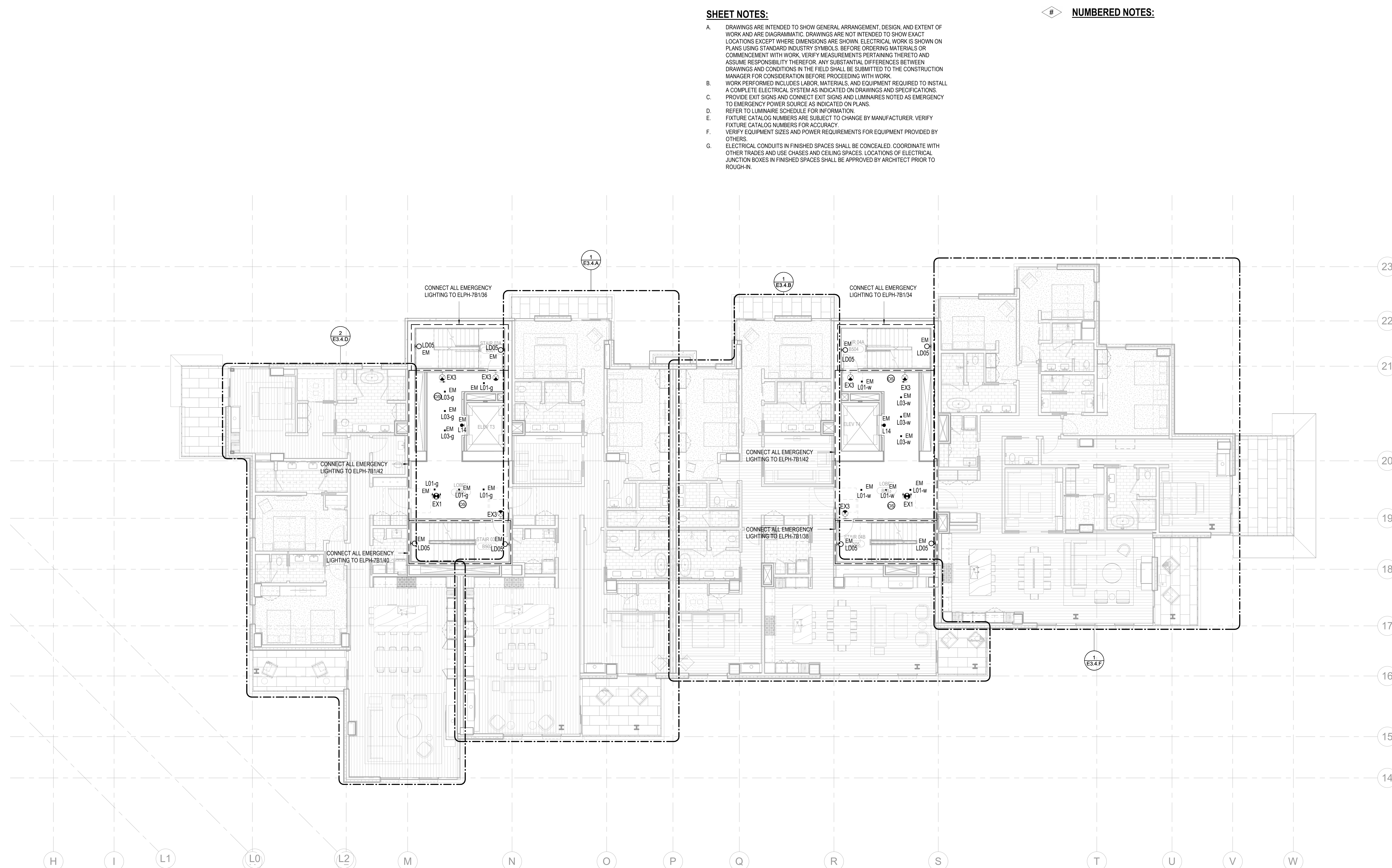
revisions:

no.	date	b
-----	------	---

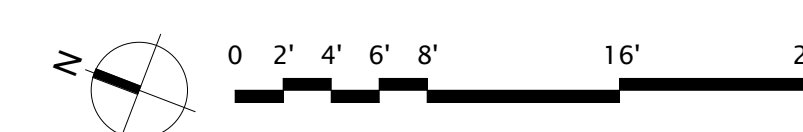
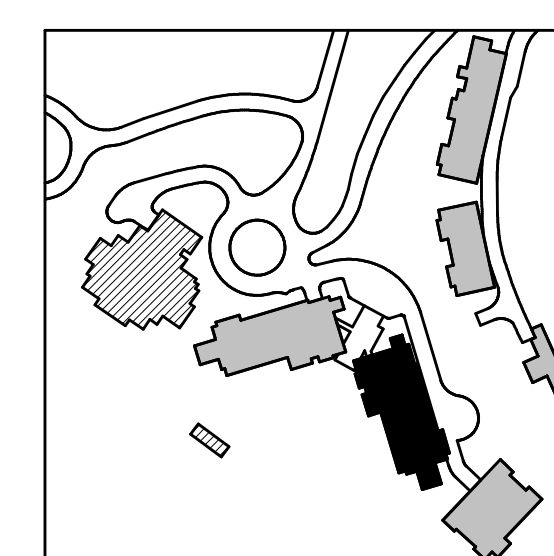
ISSUE FOR
CONSTRUCTION
11/18/2022

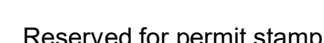
TOWER B - LVL 5
ELECTRICAL LIGHTING
PLAN

E3.2B.15



1 TOWER B - LEVEL 5 ELECTRICAL LIGHTING RCP
SCALE: 1/8" = 1'-0"





159 South Jackson St., Suite 800
Seattle, Washington 98104 USA
206.474.5670 clearwater.com

Olson Kundig

Project: **SOMMET BLANC**
3300 Marsac Ave (B2 East Parcel)
Park City, Utah 84060



Aspen Group USA, LLC
PO Box 980022
Park City, Utah 84098

Pool Consultant
Cloward H2O
2696 N University Ave., Suite 290
Provo, UT 84604

Landscape Architect
EPG Design
6949 South High Tech Drive, Suite 100
Midvale, Utah 84047

Specifications Writer

Specifications Writer
Friday Group
88 Mainelli Road
Middlebury, VT

Code Consultant

Code Consultant
Holmes
600 1st Avenue, Suite 200A
Seattle, WA 98104

Fire Protection Engineer
Jensen Hughes
One Research Drive, Suite 305C
Westborough, MA 01581

Vertical Transportation Consultant
Lerch Bates
19515 North Creek Parkway, Suite 3
Bothell, WA 98011

Structural Engineer
Magnusson Klemencic Associates
1301 5th Ave, Suite 3200
Seattle, WA 98101

Lighting Designer
O.
1319 SE MLK Blvd, Suite 210
Portland, Oregon 97216

Building Envelope Consultant
RDH
2101 N 34th St
Seattle, WA 98103

Accessibility Consultant
Studio Pacifica
2144 Westlake Ave N, Suite F
Seattle, WA 98102

MEP Engineer
WSP USA
1001 Fourth Ave., Suite 3100
Seattle, WA 98154

principal architect _____
project manager _____
drawn by _____
checked by Checker
job no. _____
date 11/18/2022

revisions:

[illegible]

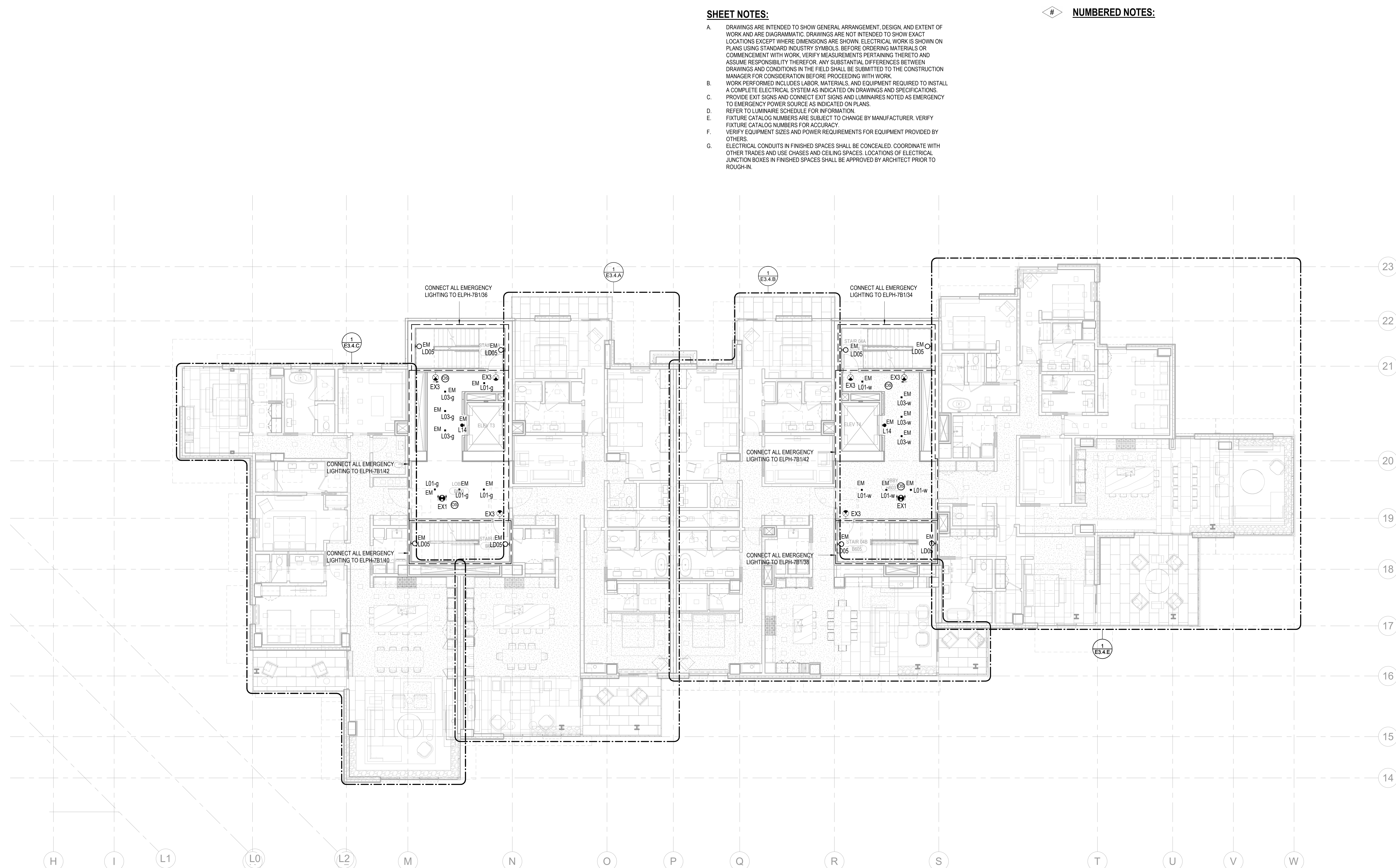
no.	date	b
-----	------	---

ISSUE FOR
CONSTRUCTION

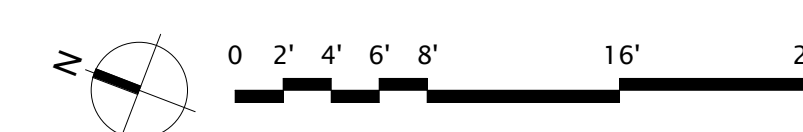
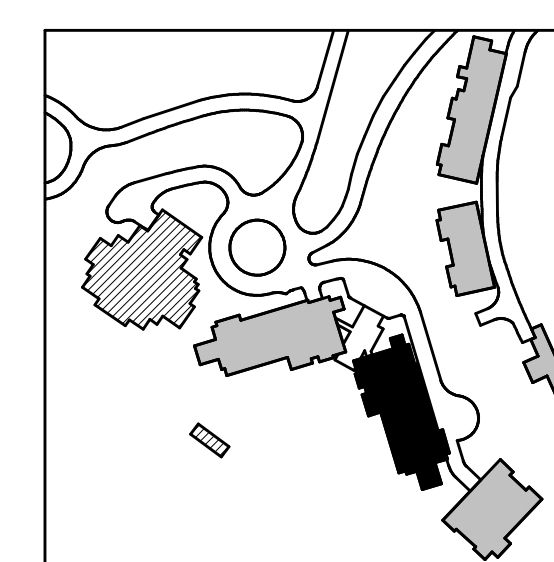
11/18/2022

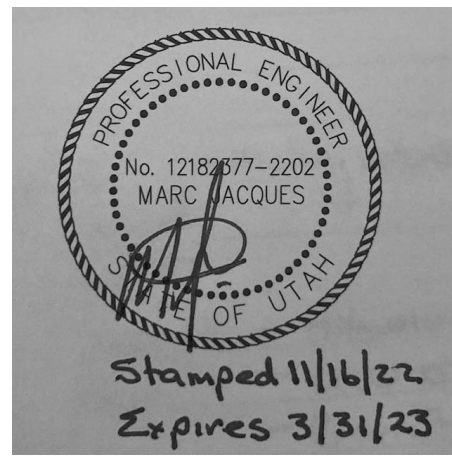
TOWER B - LVL 6
ELECTRICAL LIGHTING
PLAN

E3.2B.16



1 TOWER B - LEVEL 6 ELECTRICAL LIGHTING RCP
SCALE: 1/8" = 1'-0"





Reserved for permit stamp

109 South Jackson St., Suite 600
Seattle, Washington 98104 USA
+1 206 824 2677 olsonkundig.com

Olson Kundig

project
SOMMET BLANC
9300 Marzac Ave (B2 East Parcel)
Park City, Utah 84060



Aspen Group USA, LLC
PO Box 980022
Park City, Utah 84098

Pool Consultant
Cloward M20
2696 N University Ave., Suite 290
Provo, UT 84604

Landscape Architect
EPG Design
6948 South High Tech Drive, Suite 100
Midvale, Utah 84047

Specifications Writer
Friday Group
86 Mainelli Road
Middlebury, VT

Code Consultant
Holmes
600 1st Avenue, Suite 200A
Seattle, WA 98104

Fire Protection Engineer
Jensen Hughes
One Research Drive, Suite 305C
Westborough, MA 01581

Vertical Transportation Consultant
Larch Bates
19515 North Creek Parkway, Suite 304
Bothell, WA 98011

Structural Engineer
Magnusson Klemencic Associates
1301 5th Ave., Suite 3200
Seattle, WA 98101

Lighting Designer
O
1319 SE MLK Blvd, Suite 210
Portland, Oregon 97219

Building Envelope Consultant
RDH
2101 N 34th St
Seattle, WA 98103

Accessibility Consultant
Studio Pacifica
2144 Westlake Ave N, Suite F
Seattle, WA 98109

MEP Engineer
WSP USA
1001 Fourth Ave., Suite 3100
Seattle, WA 98154

principal architect _____
project manager _____
drawn by _____
checked by _____
job no. _____
date 11/18/2022

revisions:

no. date by

ISSUE FOR
CONSTRUCTION
11/18/2022

TOWER B - LVL 7
ELECTRICAL LIGHTING
PLAN

E3.2B.17

SHEET NOTES:

- DRAWINGS ARE INTENDED TO SHOW GENERAL ARRANGEMENT, DESIGN, AND EXTENT OF WORK AND ARE DIAGRAMMATIC. DRAWINGS ARE NOT INTENDED TO SHOW EXACT LOCATIONS EXCEPT WHERE DIMENSIONS ARE SHOWN. ELECTRICAL WORK IS SHOWN ON PLANS USING STANDARD INDUSTRY SYMBOLS. BEFORE ORDERING MATERIALS OR COMMENCEMENT WITH WORK, VERIFY MEASUREMENTS PERTAINING THERETO AND ASSUME RESPONSIBILITY THEREFOR. ANY SUBSTANTIAL DIFFERENCES BETWEEN DRAWINGS AND CONDITIONS IN THE FIELD SHALL BE SUBMITTED TO THE CONSTRUCTION MANAGER FOR CONSIDERATION BEFORE PROCEEDING WITH WORK.
- WORK PERFORMED INCLUDES LABOR, MATERIALS, AND EQUIPMENT REQUIRED TO INSTALL A COMPLETE ELECTRICAL SYSTEM AS INDICATED ON DRAWINGS AND SPECIFICATIONS. PROVIDE EXIT SIGNS AND CONNECT EXIT SIGNS AND LUMINAIRES NOTED AS EMERGENCY TO EMERGENCY POWER SOURCE AS INDICATED ON PLANS.
- REFER TO LUMINAIRE SCHEDULE FOR INFORMATION.
- FIXTURE CATALOG NUMBERS ARE SUBJECT TO CHANGE BY MANUFACTURER. VERIFY FIXTURE CATALOG NUMBERS FOR ACCURACY.
- VERIFY EQUIPMENT SIZES AND POWER REQUIREMENTS FOR EQUIPMENT PROVIDED BY OTHERS.
- ELECTRICAL CONDUITS IN FINISHED SPACES SHALL BE CONCEALED. COORDINATE WITH OTHER TRADES AND USE CHASES AND CEILING SPACES. LOCATIONS OF ELECTRICAL JUNCTION BOXES IN FINISHED SPACES SHALL BE APPROVED BY ARCHITECT PRIOR TO ROUGH-IN.



NUMBERED NOTES:

