









HATCH PATTERN INDICATE EXTENT OF FLOOR FINISH TYPES

	WOOD FLOORING		SPORTS
	TILE		RESILIENT FLOORING
	CARPET		CONCRETE
	EXTERIOR PAVERS		EXTERIOR DECK TILE

159 South Jackson St, Suite 600
Seattle, Washington 98104 USA
+1 206 624 5670 olsonkundig.com

Olson Kundig

SOMMET BLANC
9300 MARSAC AVE
PARK CITY, UT 84060



Aspen Group USA, LLC
PO Box 980022
Park City, Utah 84098

Pool Consultant
Cloward H2O
2696 N University Ave, Suite 290
Provo, UT 84604

Landscape Architect
EPG Design
6949 South High Tech Drive, Suite 100
Midvale, Utah 84047

Specifications Write
Friday Group
88 Mainelli Road
Middlebury, VT

Code Consultant
Holmes
600 1st Avenue, Suite 200A
Seattle, WA 98104

Fire Protection Engineer
Jensen Hughes
One Research Drive, Suite 305C
Westborough, MA 01581

Vertical Transportation Consultant
Lerch Bates
19515 North Creek Parkway, Suite 304
Bothell, WA 98011

Structural Engineer
Magnusson Klemencic Associates
1301 5th Ave, Suite 3200
Seattle, WA 98101

Lighting Designer
O*
1319 SE MLK Blvd, Suite 210
Portland, Oregon 97219

Building Envelope Consultant
RDH
2101 N 34th St
Seattle, WA 98103

Accessibility Consultant
Studio Pacifica
2144 Westlake Ave N, Suite F
Seattle, WA 98109

MEP Engineer
WSP USA
1001 Fourth Ave., Suite 3100
Seattle, WA 98154

principal architect	TK, KM
project manager	TM, JB, LB, MD
drawn by	SK, SS, JR, CP, A NH, EK, BD, EB

checked by	Checker
job no.	20062
date	11/18/2022

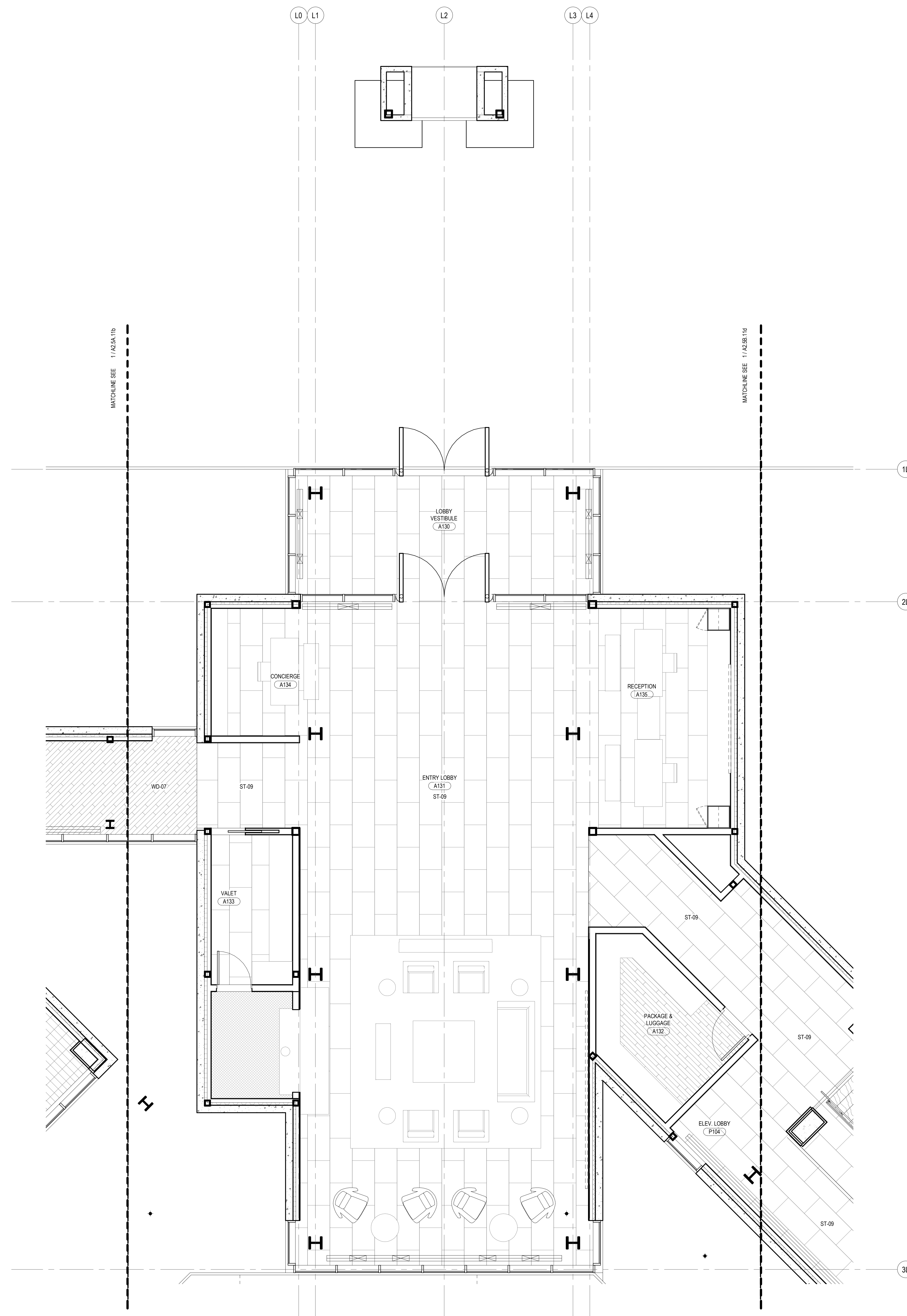
revisions:

no. date

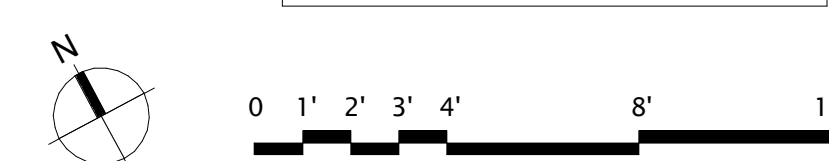
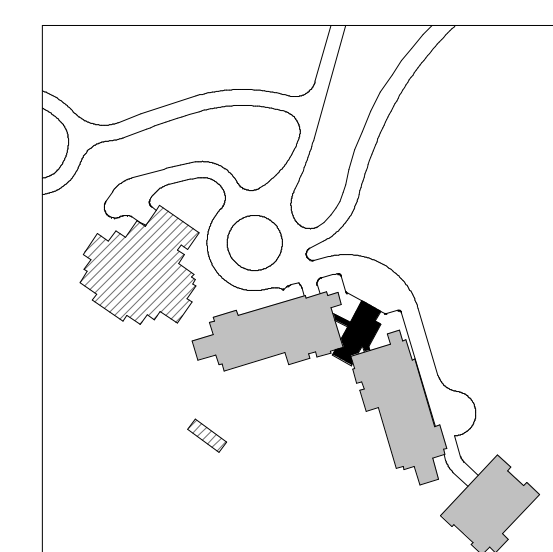
ISSUED FOR
CONSTRUCTION
11/18/2022

FINISH PLAN - TOWER
AB - LVL 1 - AREA C

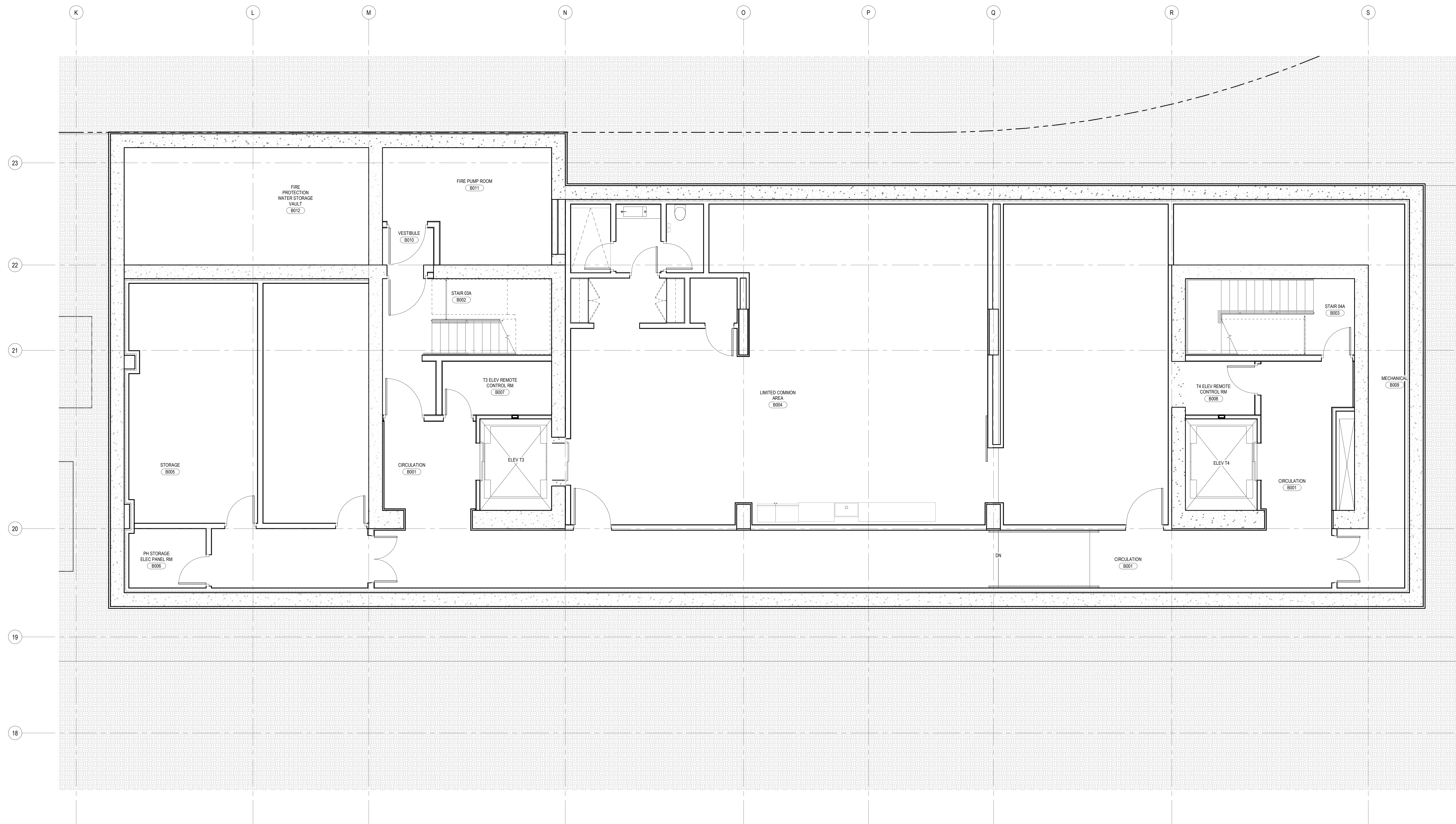
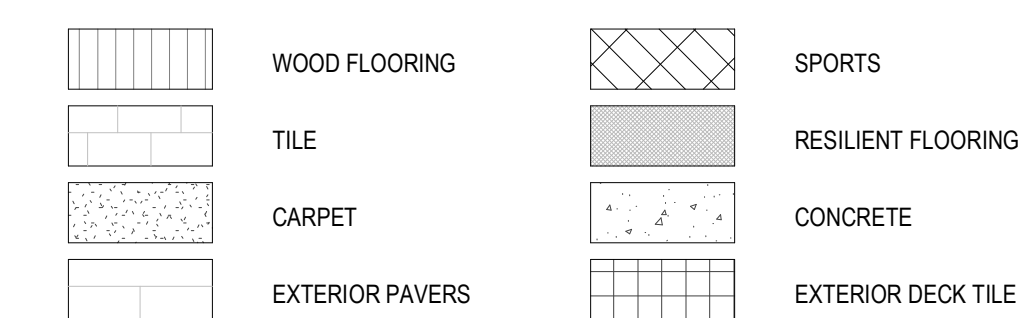
A2.5AB.1c



1 FINISH PLAN - TOWER AB - LVL 1 - AREA C
SCALE: 1/4" = 1'-0"



HATCH PATTERN INDICATE EXTENT OF FLOOR FINISH TYPES



1 FINISH PLAN - TOWER B - LVL B
SCALE: 1/4" = 1'-0"

159 South Jackson St., Suite 600
Seattle, Washington 98104 USA
+1 206 624 5670 olson-kundig.com

Olson Kundig

SOMMET BLANC
9300 MARSAC AVE
PARK CITY, UT 84060



Aspen Group USA, LLC
PO Box 980022
Park City, Utah 84098

Pool Consultant
Cloward H2O
2696 N University Ave, Suite 290
Provo, UT 84604

Landscape Architect
EPG Design
6949 South High Tech Drive, Suite 100
Midvale, Utah 84047

Specifications Write
Friday Group
88 Mainelli Road
Middlebury, VT

Code Consultant
Holmes
600 1st Avenue, Suite 200A
Seattle, WA 98104

Fire Protection Engineer
Jensen Hughes
One Research Drive, Suite 305C
Westborough, MA 01581

Vertical Transportation Consultant
Lerch Bates
19515 North Creek Parkway, Suite 304
Bothell, WA 98011

Structural Engineer
Magnusson Klemencic Associates
1301 5th Ave, Suite 3200
Seattle, WA 98101

Lighting Designer
O*
1319 SE MLK Blvd, Suite 210
Portland, Oregon 97219

Building Envelope Consultant
RDH
2101 N 34th St
Seattle, WA 98103

Accessibility Consultant
Studio Pacifica
2144 Westlake Ave N, Suite F
Seattle, WA 98109

MEP Engineer
WSP USA
1001 Fourth Ave., Suite 3100
Seattle, WA 98154

principal architect	TK, KM
project manager	TM, JB, LB, MD
drawn by	SK, SS, JR, CP, A NH, EK, BD, EB

checked by	Checker
job no.	20062
date	11/18/2022

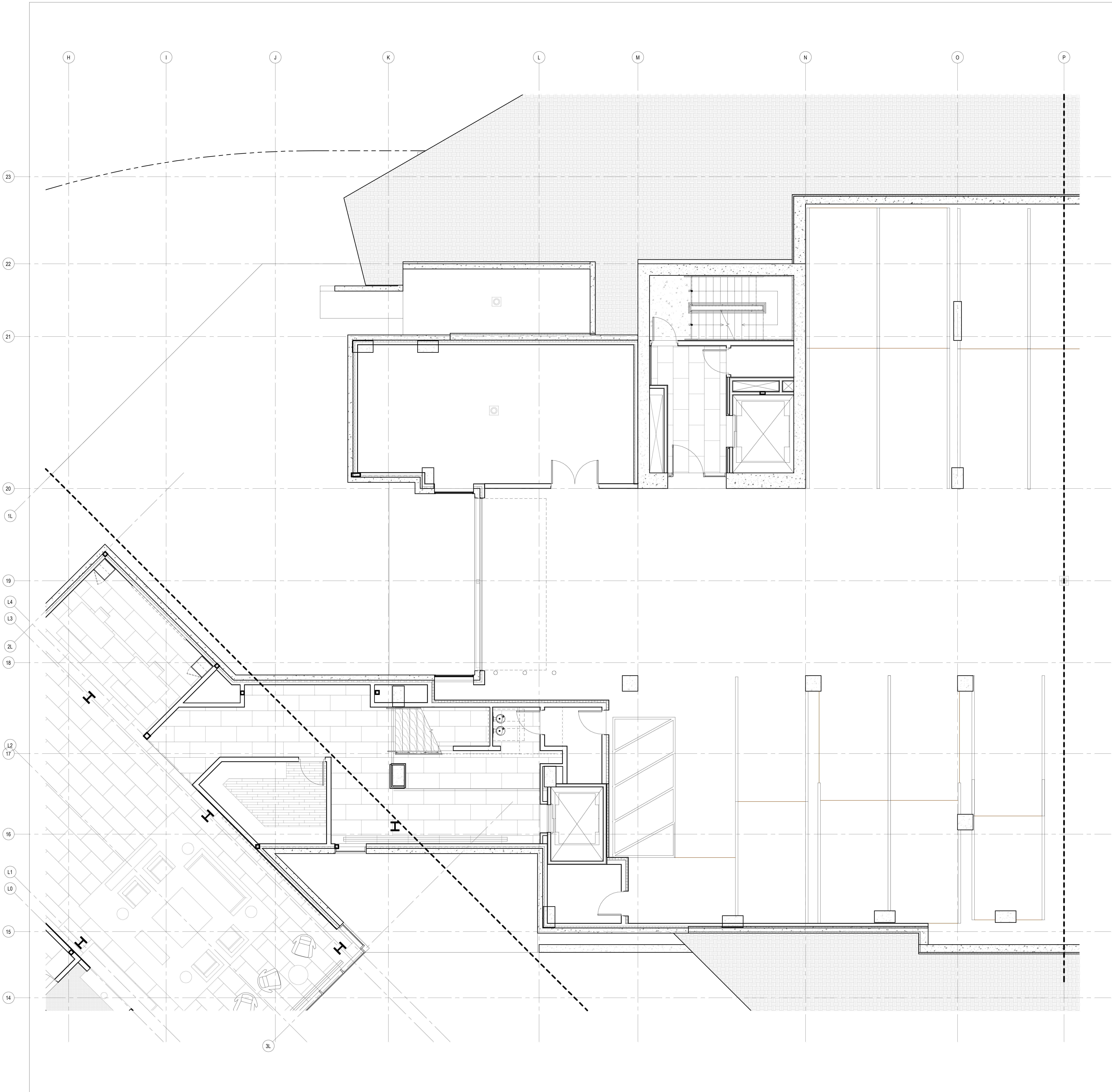
revisions:

no.	date	by
-----	------	----

ISSUED FOR
CONSTRUCTION
11/18/2022

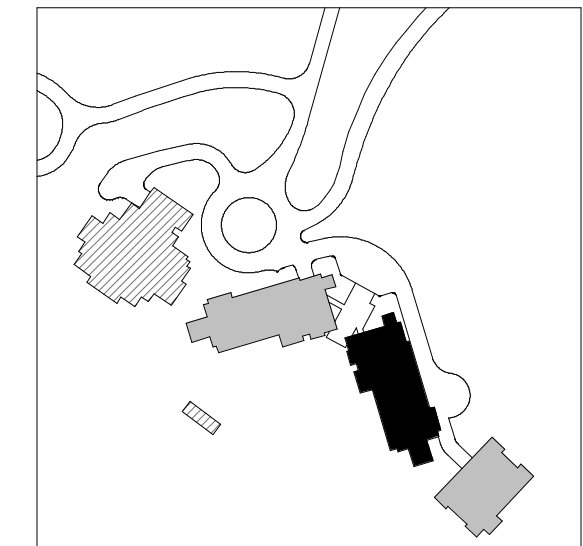
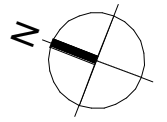
FINISH PLAN - TOWER B
- LVL B

A2.5B.01



FINISH LEGEND

HATCH PATTERN INDICATE EXTENT OF FLOOR FINISH TYPES			
	WOOD FLOORING		SPORTS
	TILE		RESILIENT FLOORING
	CARPET		CONCRETE
	EXTERIOR PAVERS		EXTERIOR DECK TILE



0 1' 2' 3' 4' 8' 12'

109 South Jackson St. Suite 600
Seattle, Washington 98104 USA
+1 206 424 3810 olsonkundig.com

Olson Kundig

SOMMET BLANC
8300 MARSAC AVE
PARK CITY, UT 84060



Aspen Group USA, LLC
PO Box 980022
Park City, Utah 84098

Pool Consultant
Cloward H2O
2696 N University Ave., Suite 290
Provo, UT 84604

Landscape Architect
EPG Design
6940 South High Tech Drive, Suite 100
Midvale, Utah 84047

Specifications Writer
Friday Group
88 Mainelli Road
Middlebury, VT

Code Consultant
Holmes
600 1st Avenue, Suite 200A
Seattle, WA 98104

Fire Protection Engineer
Jensen Hughes
One Research Drive, Suite 305C
Westborough, MA 01581

Vertical Transportation Consultant
Larch Bates
19615 North Creek Parkway, Suite 304
Bothell, WA 98011

Structural Engineer
Magnusson Klemencic Associates
1301 5th Ave., Suite 3200
Seattle, WA 98101

Lighting Designer
O
3319 SE MLK Blvd., Suite 210
Portland, Oregon 97219

Building Envelope Consultant
RDH
2101 N 34th St
Seattle, WA 98103

Accessibility Consultant
Studio Pacifica
2144 Westlake Ave N, Suite F
Seattle, WA 98109

MEP Engineer
WSP USA
1001 Fourth Ave., Suite 3100
Seattle, WA 98154

principal architect TK, KM
project manager TM, JB, LS, MD
drawn by SK, SS, JR, CP, AL
NH, EK, BD, EB

checked by Checker
job no. 20552
date 11/18/2022

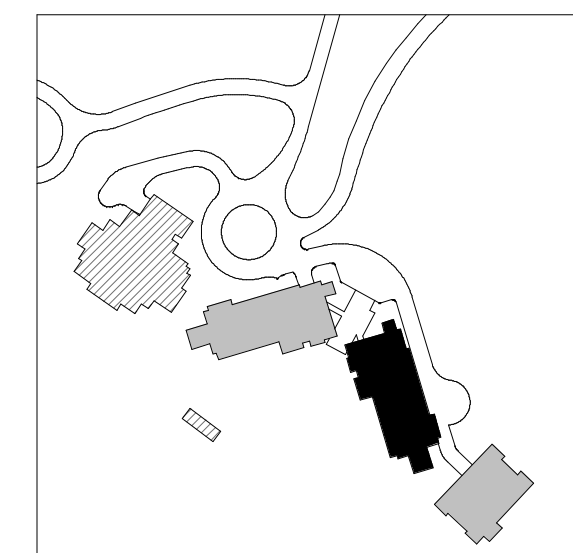
revisions:

no. date by









ISSUED FOR
CONSTRUCTION
11/18/2022

FINISH PLAN - TOWER B
- LVL P1 - AREA D

A2.5B.03d

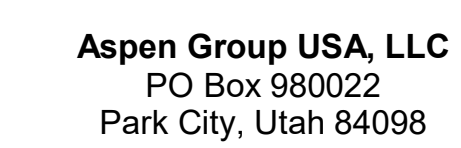


1 FINISH PL
SCALE: 1/4" = 1'-0"

	WOOD FLOORING		SPORTS
	TILE		RESILIENT FLOORING
	CARPET		CONCRETE
	EXTERIOR PAVERS		EXTERIOR DECK TILE

Olson Kundig

SOMMET BLANC
9300 MARSAC AVE
PARK CITY, UT 84060



Pool Consultant
Cloward H20
2696 N University Ave, Suite 290
Provo, UT 84604

Landscape Architect
EPG Design
6949 South High Tech Drive, Suite 100
Midvale, Utah 84047

Specifications Write
Friday Group
88 Mainelli Road
Middlebury, VT

Code Consultant
Holmes
600 1st Avenue, Suite 200A
Seattle, WA 98104

Fire Protection Engineer
Jensen Hughes
One Research Drive, Suite 305C
Westborough, MA 01581

Vertical Transportation Consultant
Lerch Bates
19515 North Creek Parkway, Suite 304
Bothell, WA 98011

Structural Engineer
Magnusson Klemencic Associates
1301 5th Ave, Suite 3200
Seattle, WA 98101

Lighting Designer
O-
1319 SE MLK Blvd, Suite 210
Portland, Oregon 97219

Building Envelope Consultant
RDH
2101 N 34th St
Seattle, WA 98103

Accessibility Consultant
Studio Pacifica
2144 Westlake Ave N, Suite F
Seattle, WA 98109

MEP Engineer
WSP USA
1001 Fourth Ave., Suite 3100
Seattle, WA 98154

principal architect	TK, KM
project manager	TM, JB, LB, MD
drawn by	SK, SS, JR, CP, A

checked by Checker
job no. 20052

revisions:

[illegible]

no.	date	by
-----	------	----

ISSUED FOR
CONSTRUCTION
11/18/2022

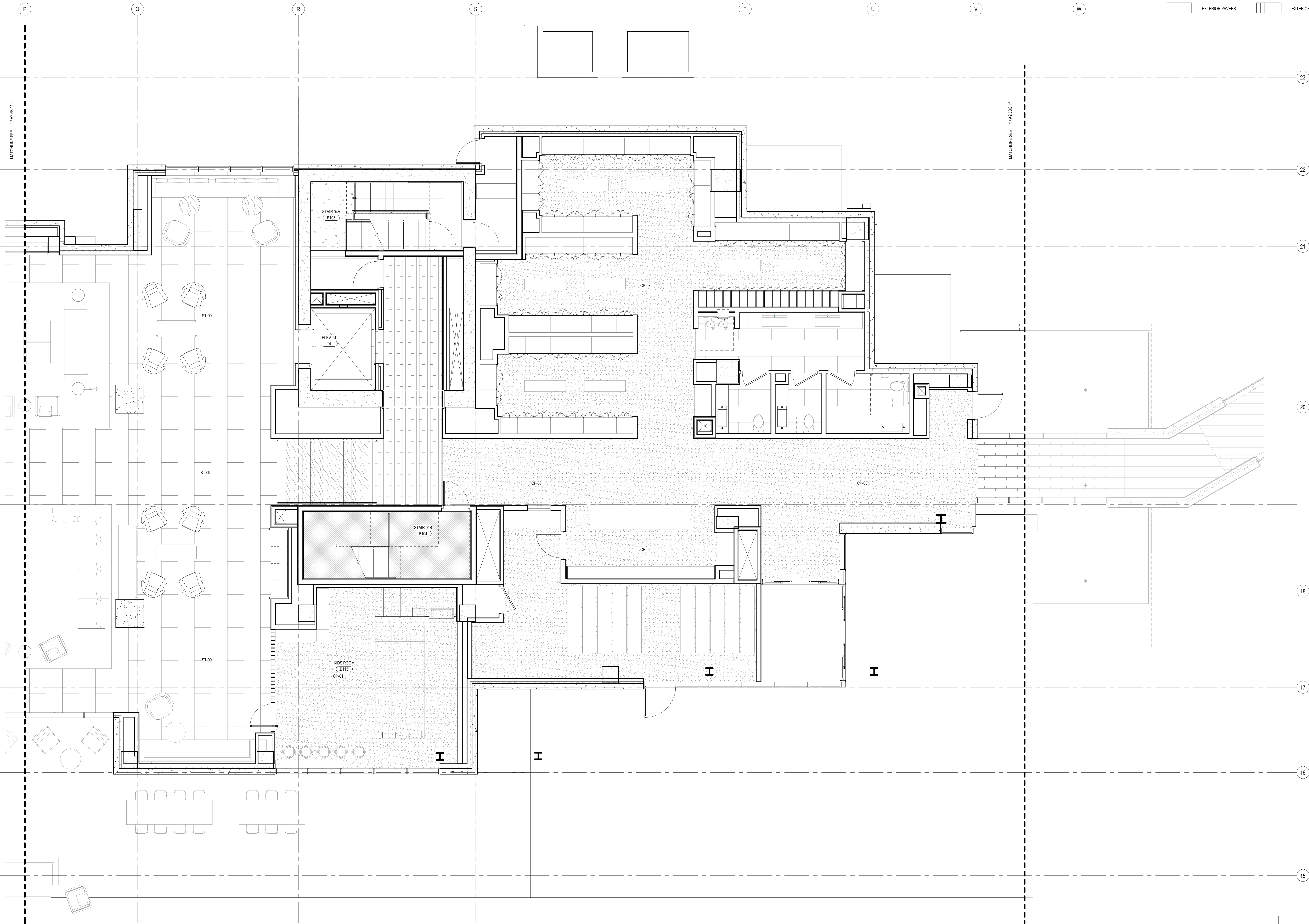
FINISH PLAN - TOWER B
- LVL 1 - AREA D

A2.5B.11d

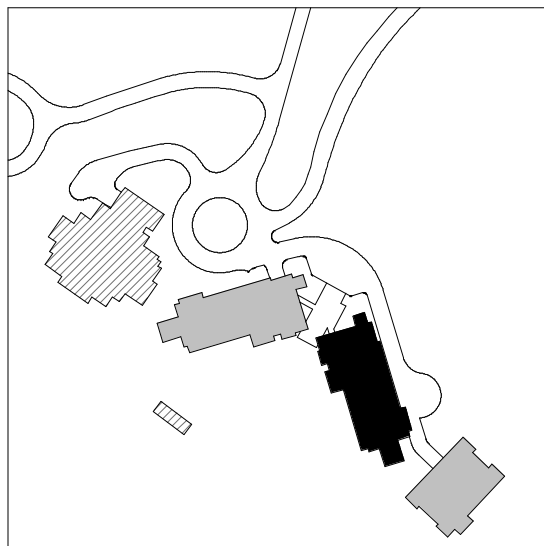
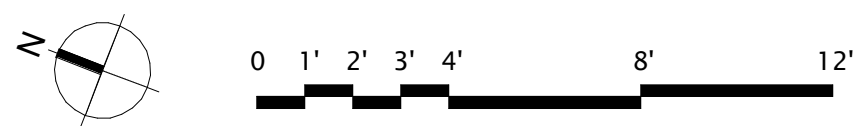
FINISH LEGEND

HATCH PATTERN INDICATE EXTENT OF FLOOR FINISH TYPES

	WOOD FLOORING		SPORTS
	TILE		RESILIENT FLOORING
	CARPET		CONCRETE
	EXTERIOR PAVERS		EXTERIOR DECK TILE



1 FINISH PLAN - TOWER B - LVL 1 - AREA E
SCALE: 1/4" = 1'-0"



109 South Jackson St. Suite 600
Seattle, Washington 98104 USA
+1 206 424 1810 olsonkundig.com

Olson Kundig

SOMMET BLANC
8300 MARSA C AVE
PARK CITY, UT 84060



Aspen Group USA, LLC
PO Box 980022
Park City, Utah 84098

Pool Consultant
Cloward & Co
2096 N University Ave., Suite 200
Provo, UT 84604

Landscape Architect
EPG Design
6040 South High Tech Drive, Suite 100
Midvale, Utah 84047

Specifications Writer
Friday Group
88 Mainelli Road
Middlebury, VT

Code Consultant
Holmes
600 1st Avenue, Suite 200A
Seattle, WA 98104

Fire Protection Engineer
Jensen Hughes
One Research Drive, Suite 305C
Westborough, MA 01581

Vertical Transportation Consultant
Larch Bates
19515 North Creek Parkway, Suite 304
Bothell, WA 98011

Structural Engineer
Magnusson Klemencic Associates
1301 5th Ave, Suite 3200
Seattle, WA 98101

Lighting Designer
O
1319 SE MLK Blvd, Suite 210
Portland, Oregon 97219

Building Envelope Consultant
RDH
2101 N 34th St
Seattle, WA 98103

Accessibility Consultant
Studio Pacifica
2144 Westlake Ave N, Suite F
Seattle, WA 98109

MEP Engineer
WSP USA
1001 Fourth Ave., Suite 3100
Seattle, WA 98154

principal architect TK, KM
project manager TM, JB, LB, MD
drawn by SK, SS, JR, CP, AL
NH, EK, BD, ER

checked by Checker
job no. 2052
date 11/18/2022

revisions:









no. date by

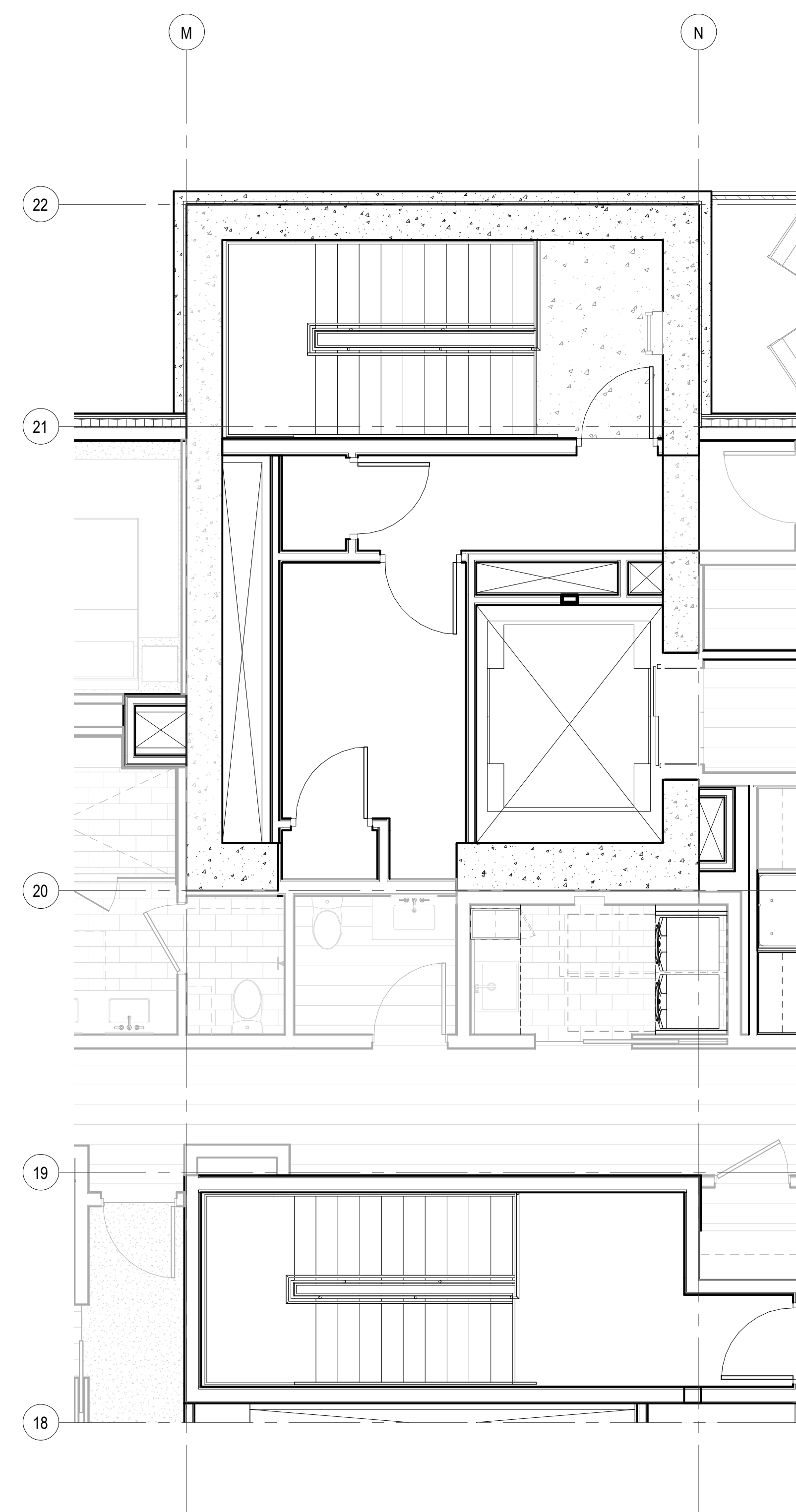
ISSUED FOR
CONSTRUCTION
11/18/2022

FINISH PLAN - TOWER B
- LVL 1 - AREA E

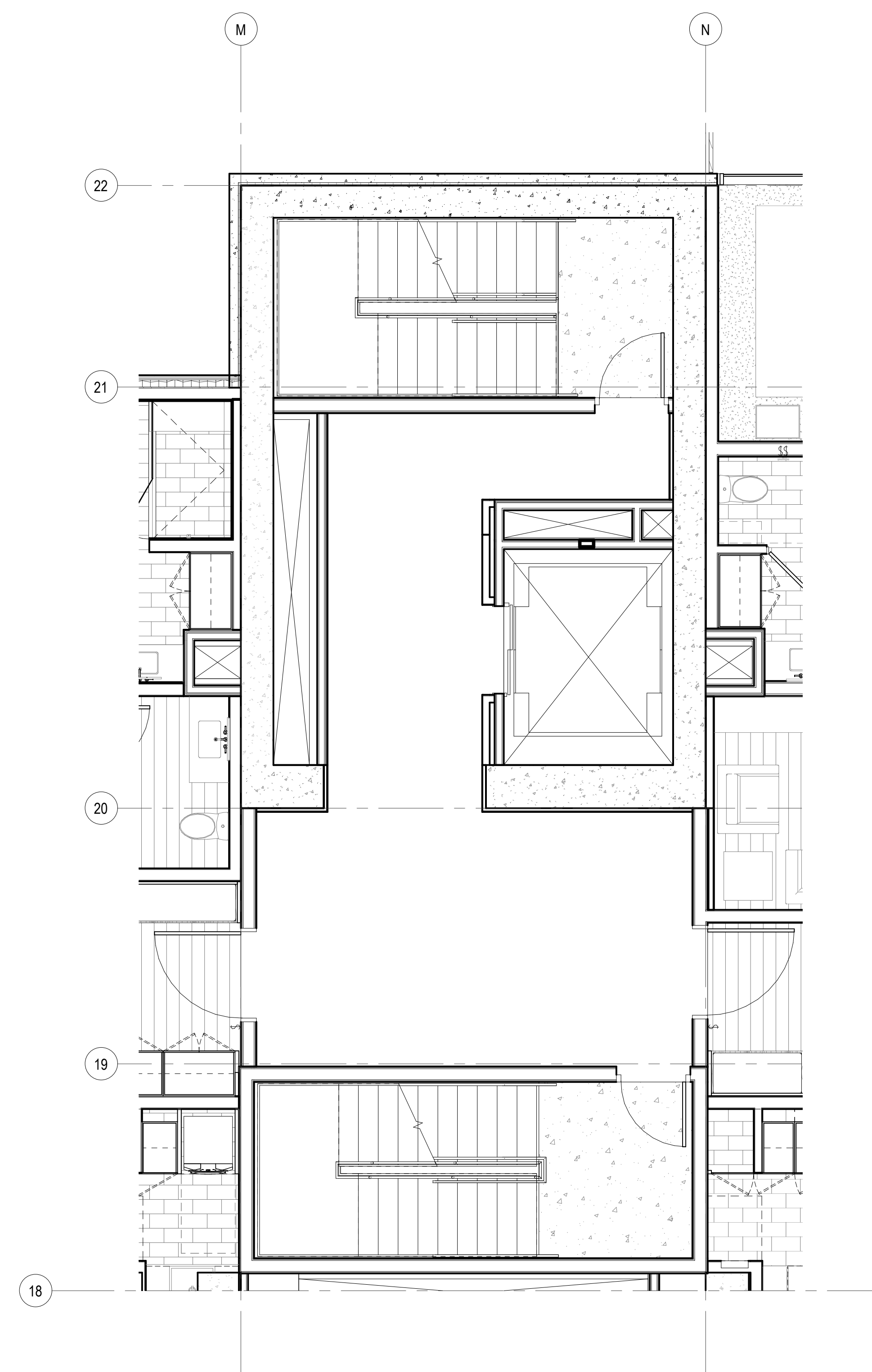
A2.5B.11e

HATCH PATTERN INDICATE EXTENT OF FLOOR FINISH TYPES

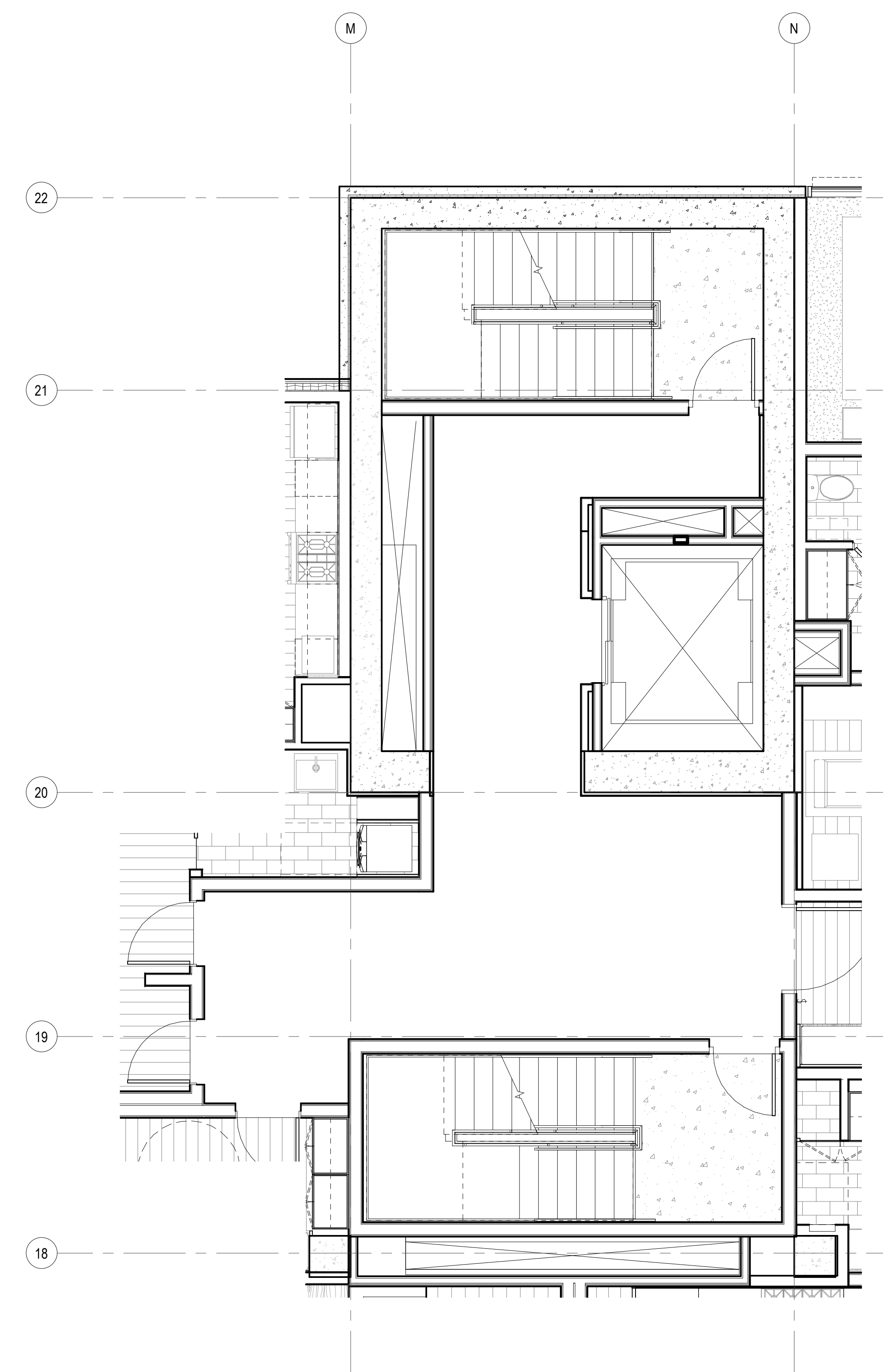
	WOOD FLOORING		SPORTS
	TILE		RESILIENT FLOORING
	CARPET		CONCRETE
	EXTERIOR PAVERS		EXTERIOR DECK TILE



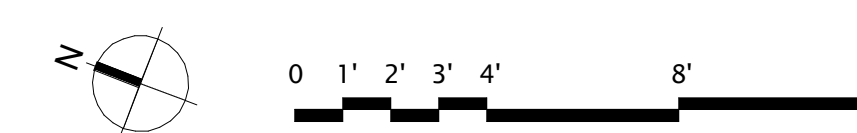
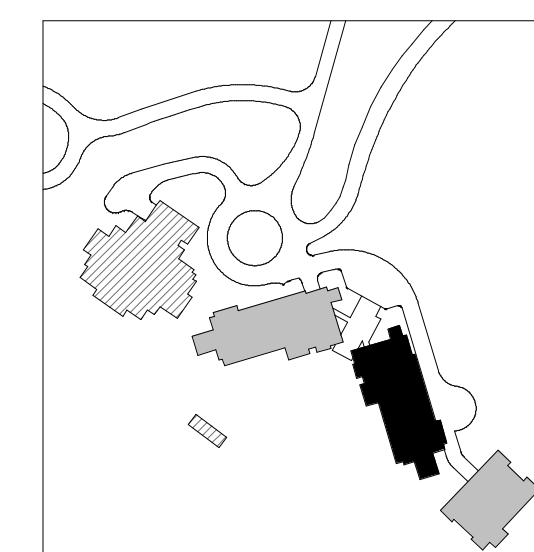
3 FINISH PLAN - TOWER B - CORE 3 - LVL 7
SCALE: 1/4" = 1'-0"











2 FINISH PLAN - TOWER B - CORE 3 - LVL 3-6
SCALE: 1/4" = 1'-0"

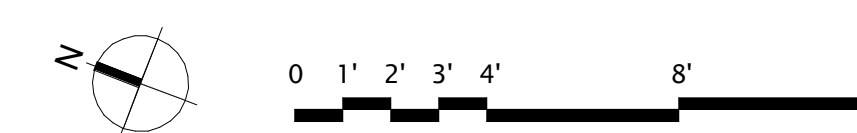
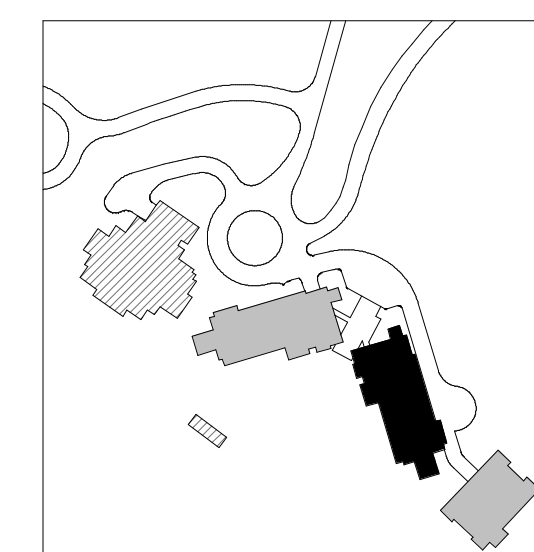


1 FINISH PLAN - TOWER B - CORE 3 - LVL 2
SCALE: 1/4" = 1'-0"



HATCH PATTERN INDICATE EXTENT OF FLOOR FINISH TYPES

	WOOD FLOORING		SPORTS
	TILE		RESILIENT FLOORING
	CARPET		CONCRETE
	EXTERIOR PAVERS		EXTERIOR DECK TILE



159 South Jackson St., Suite 600
Seattle, Washington 98104 USA
Tel: 206 424 5670 info@cedexin.com

Olson Kundia

SOMMET BLANC
9300 MARSAC AVE
PARK CITY, UT 84060



Aspen Group USA, LLC
PO Box 980022
Park City, Utah 84098

Pool Consultant
Cloward H20
2696 N University Ave, Suite 290
Provo, UT 84604

Landscape Architect
EPG Design
6949 South High Tech Drive, Suite 100
Midvale, Utah 84047

Specifications Write
Friday Group
88 Mainelli Road
Middlebury, VT

Code Consultant
Holmes
600 1st Avenue, Suite 200A
Seattle, WA 98104

Fire Protection Engineer
Jensen Hughes
One Research Drive, Suite 305C
Westborough, MA 01581

Vertical Transportation Consultant
Lerch Bates
19515 North Creek Parkway, Suite 304
Bothell, WA 98011

Structural Engineer
Magnusson Klemencic Associates
1301 5th Ave, Suite 3200
Seattle, WA 98101

Lighting Designer
O.
1319 SE MLK Blvd, Suite 210

Building Envelope Consultants
RDH
2101 N 34th St

Accessibility Consultant
Studio Pacifica
2144 Westlake Ave N, Suite

MEP Engineer
WSP USA
1001 Fourth Ave., Suite 3100

principal architect TK, KM
project manager TM, JB, LB, MD
drawn by SK, SS, JR, CP, AL

checked by Checker
job no. 20052

revisions:

no.	date	by









ISSUED FOR
CONSTRUCTION

11/18/2022

FINISH PLAN - TOWER

A2.5B.24

HATCH PATTERN INDICATE EXTENT OF FLOOR FINISH TYPES

	WOOD FLOORING		SPORTS
	TILE		RESILIENT FLOORING
	CARPET		CONCRETE
	EXTERIOR PAVERS		EXTERIOR DECK TILE

159 South Jackson St., Suite 600
Seattle, Washington 98104 USA
+1 206 624 5670 olsonkundig.com

Olson Kundig

SOMMET BLANC
9300 MARSAC AVE
PARK CITY, UT 84060



Aspen Group USA, LLC
PO Box 980022
Park City, Utah 84098

Pool Consultant
Cloward H2O
2696 N University Ave, Suite 290
Provo, UT 84604

Landscape Architect
EPG Design
6949 South High Tech Drive, Suite 100
Midvale, Utah 84047

Specifications Write
Friday Group
88 Mainelli Road
Middlebury, VT

Code Consultant
Holmes
600 1st Avenue, Suite 200A
Seattle, WA 98104

Fire Protection Engineer
Jensen Hughes
One Research Drive, Suite 305C
Westborough, MA 01581

Vertical Transportation Consultant
Lerch Bates
19515 North Creek Parkway, Suite 304
Bothell, WA 98011

Structural Engineer
Magnusson Klemencic Associates
1301 5th Ave, Suite 3200
Seattle, WA 98101

Lighting Designer
O*
1319 SE MLK Blvd, Suite 210
Portland, Oregon 97219

Building Envelope Consultant
RDH
2101 N 34th St
Seattle, WA 98103

Accessibility Consultant
Studio Pacifica
2144 Westlake Ave N, Suite F
Seattle, WA 98109

MEP Engineer
WSP USA
1001 Fourth Ave., Suite 3100
Seattle, WA 98154

principal architect TK, KM
project manager TM, JB, LB, MD
drawn by SK, SS, JR, CP, A
NH, EK, BD, EB

checked by	Checker
job no.	20062
date	11/18/2022

revisions:

[illegible]

no.	date	by
-----	------	----

ISSUED FOR
CONSTRUCTION
11/18/2022

FINISH PLAN - TOWER
BC CONNECTOR - AREA
F

A2.5BC.1f

