

- 159 South Jackson St., Suite 600
Seattle, Washington 98104 USA
+1 206 624 5870 olsonkundig.com

Olson Kundig

SOMMET BLANC
9300 MARSAC AVE
PARK CITY, UT 84060

ASPEN GROUP

Pool Consultant
Cloward H2O
2696 N University Ave, Suite 290
Provo, UT 84604

Specifications Writer
Friday Group
88 Mainelli Road
Middlebury, VT

Fire Protection Engineer
Jensen Hughes
One Research Drive, Suite 305C
Westborough, MA 01581

Structural Engineer
Magnusson Klemencic Associates
1301 5th Ave, Suite 3200
Seattle, WA 98101

Building Envelope Consultant
RDH
2101 N 34th St
Seattle, WA 98103

MEP Engineer
WSP USA
1001 Fourth Ave., Suite 3100
Seattle, WA 98154

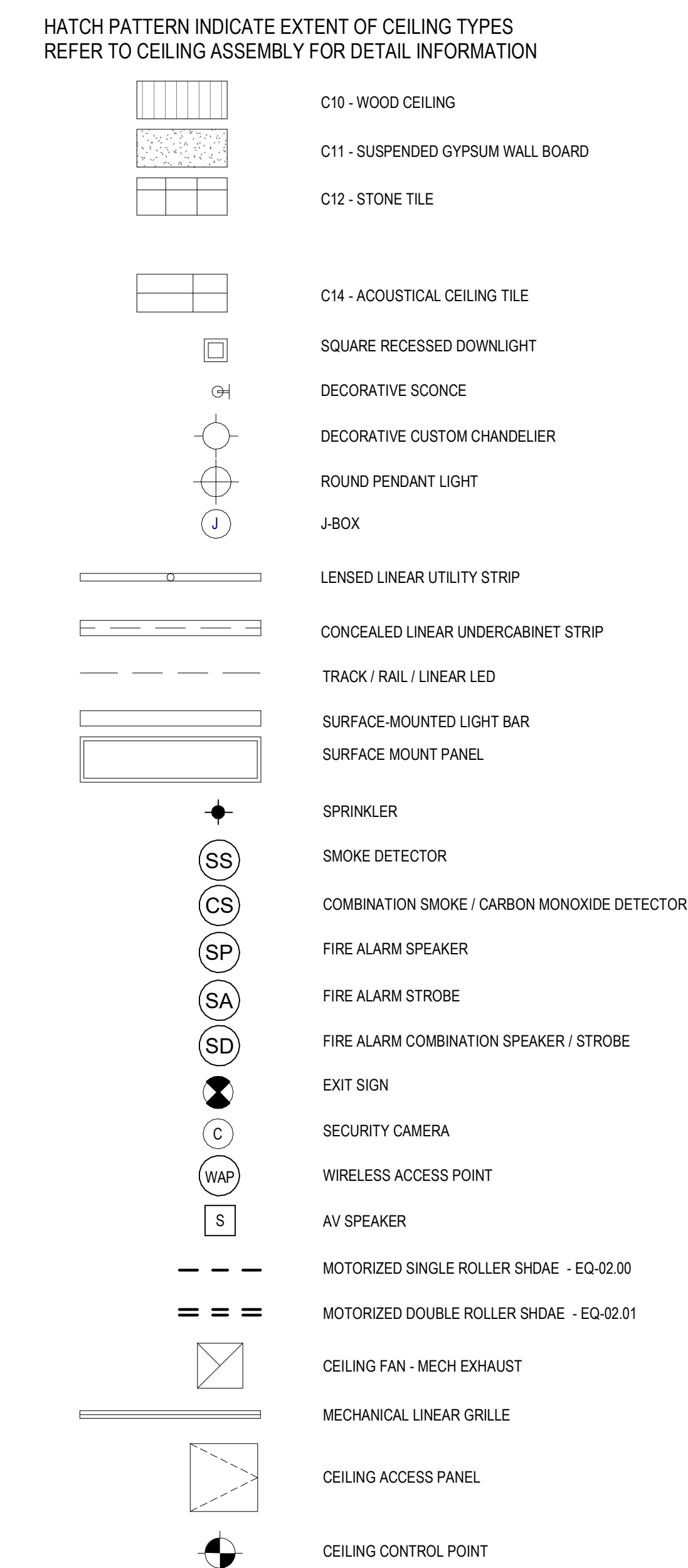
checked by Checker
job no. 20052

no.	date	by

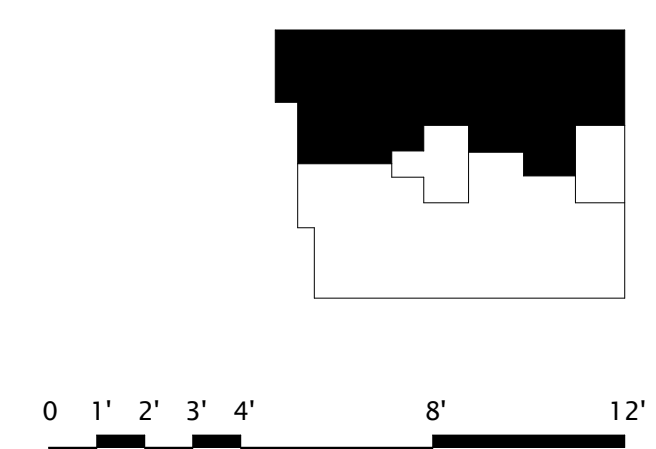
ISSUED FOR
CONSTRUCTION

11/18/2022

A6.2.M



1 ENLARGED RCP - TOWER C UNIT M
SCALE: 1/4" = 1'-0"



159 South Jackson St., Suite 600
Seattle, Washington 98104 USA
Tel: 206 824 5870 elc@elcmedia.com

Olson Kundig

SOMMET BLANC
9300 MARSAC AVE
PARK CITY, UT 84060

ASPEN GROUP

Pool Consultant
Cloward H2O
2896 N University Ave, Suite 290
Provo, UT 84604

Landscape Architect
EPG Design
6949 South High Tech Drive, Suite 100
Midvale, Utah 84047

Specifications Writer
Friday Group
88 Mainelli Road
Middlebury, VT

Code Consultant
Holmes
600 1st Avenue, Suite 200A
Seattle, WA 98104

Fire Protection Engineer
Jensen Hughes
One Research Drive, Suite 305C
Westborough, MA 01581

Vertical Transportation Consultant
Lerch Bates
19515 North Creek Parkway, Suite 304
Bothell, WA 98011

Structural Engineer
Magnusson Klemencic Associates
1301 5th Ave, Suite 3200
Seattle, WA 98101

Lighting Designer
O-
1319 SE MLK Blvd, Suite 210
Portland, Oregon 97219

Building Envelope Consultant
RDH
2101 N 34th St
Seattle, WA 98103

Accessibility Consultant
Studio Pacifica
2144 Westlake Ave N, Suite F
Seattle, WA 98109

MEP Engineer
WSP USA
1001 Fourth Ave., Suite 3100
Seattle, WA 98154

principal architect TK, KM
project manager TM, JB, LB, MD
drawn by SK, SS, JR, CP, A

checked by Checker
job no. 20062

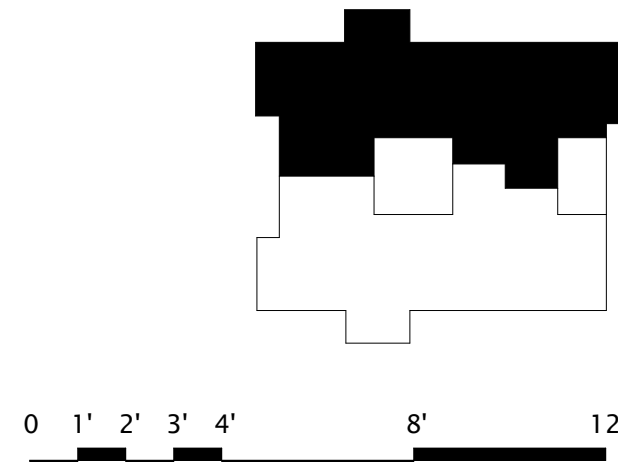
revisions:

no.	date	by
-----	------	----

ISSUED FOR
CONSTRUCTION
11/18/2022

RCP - TOWER C - UNIT N

A6.2.N



1 ENLARGED RCP - TOWER C UNIT N
SCALE: 1/4" = 1'-0"

159 South Jackson St., Suite 600
Seattle, Washington 98104 USA
+1 206 624 5870 olsonkundig.com

Olson Kundig

SOMMET BLANC
3300 MARSAC AVE



Aspen Group USA, LLC
PO Box 980022
Park City, Utah 84098

Pool Consultant
Cloward H2O
2696 N University Ave, Suite 290
Provo, UT 84604

Landscape Architect
EPG Design
6949 South High Tech Drive, Suite 100
Midvale, Utah 84047

Specifications Writer
Friday Group
88 Mainelli Road
Middlebury, VT

Code Consultant
Holmes
600 1st Avenue, Suite 200A
Seattle, WA 98104

Fire Protection Engineer
Jensen Hughes
One Research Drive, Suite 305C
Westborough, MA 01581

Vertical Transportation Consultant
Lerch Bates
19515 North Creek Parkway, Suite 304
Bothell, WA 98011

Structural Engineer
Magnusson Klemencic Associates
1301 5th Ave, Suite 3200
Seattle, WA 98101

Lighting Designer
O-
1319 SE MLK Blvd, Suite 2
Portland, Oregon 97219

Building Envelope Consultants
RDH
2101 N 34th St
Seattle, WA 98103

Accessibility Consultant
Studio Pacifica
2144 Westlake Ave N, Suite
Seattle, WA 98109

MEP Engineer
WSP USA
1001 Fourth Ave., Suite 310
Seattle, WA 98154

principal architect	TK, KM
project manager	TM, JB, LB, MD
drawn by	SK, SS, JR, CP, A NH, EK, BD, EB

checked by	Checker
job no.	20062
date	11/18/2022

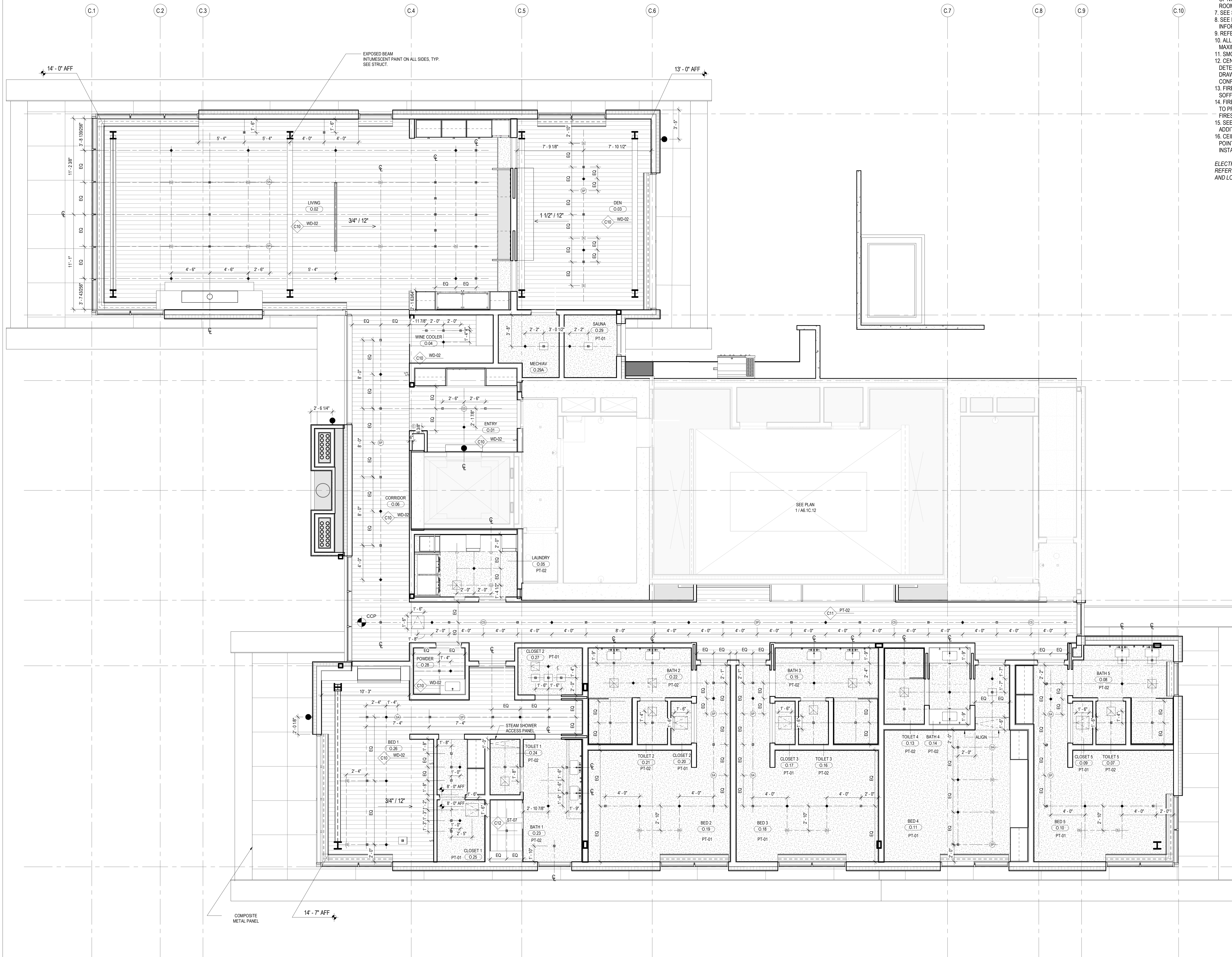
revisions

no.	date	by
-----	------	----

ISSUED FOR
CONSTRUCTION
11/18/2022

RCP - TOWER C - UNIT O

A6.2.0



1 ENLARGED RCP - TOWER C - UNIT O
SCALE: 1/4" = 1'-0"

0 1' 2' 3' 4' 8' 12'

