

1. SPOT LIGHTINGS ARE RELATIVE TO FINISH FLOOR LEVEL AND INDICATE BOTH POSITION OF FINISH FLOOR AND CEILING 9'-0" AFF. U.O.
2. ALL CEILINGS ASSUMED TO BE 9'-0" U.O.
3. ALL CEILINGS ASSUMED TO BE 9'-0" U.O.
4. ALL DIMENSIONS TO FACE OF FINISH U.O.
5. SEE CONCRETE PLANS FOR EXTENT OF CONCRETE SLABS AND BEAMS
6. OCCUPABLE SPACES, HABITABLE SPACES AND CORRIDORS SHALL HAVE A CEILING HEIGHT OF NOT LESS THAN 8'-0" ABOVE FINISH FLOOR LEVEL. KITCHENS, BATHS, BEDROOMS, KITCHEN STORAGE ROOMS AND LAUNDRY ROOMS SHALL HAVE A CEILING HEIGHT OF NOT LESS THAN 7'-0" FEET.
7. SEE SHEET 04.10 AND 04.11 FOR FLOOR/CEILING ASSEMBLIES.
8. PROVIDE ELECTRICAL AND LIGHTING DRAWINGS FOR LIGHTING LAYOUTS AND ADDITIONAL INFORMATION NOT SHOWN ON ARCHITECTURAL RCP DRAWINGS.
9. REFER TO MECHANICAL FOR SPRINKLER AND EXTINGUISHER TYPE AND FOR LOCATIONS.
10. PROVIDE DETAIL OF ALL LIGHT FIXTURES, LOCATIONS AND HEIGHTS TO PROJECT TO THE MAXIMUM FROM WALL FACE OR BE 6'-8" MINIMUM TO THE UNDERSIDE OF THE FIXTURE AFF.
11. SMOKE DETECTORS SHALL BE LOCATED A MINIMUM OF 3'-0" FROM SUPPLY AIR DIFFUSERS.
12. CENTER SPRINKLER HEAD LOCATIONS BETWEEN LIGHTING FIXTURES AND/OR SMOKE DETECTORS. PROVIDE SMOKE DETECTOR LOCATIONS TO BE DETERMINED WITH APPROVED SHOP DRAWINGS. PROVIDE SIDE ARMS WHERE HEADS AND OTHER CEILING FIXTURES MAY BE IN CONFLICT. ALIGN ALL HEADS AND FIXTURES ORTHOGONALLY.
13. PROVIDE DETAIL OF ALL LIGHT FIXTURES, LOCATIONS AND HEIGHTS TO PROJECT TO THE MAXIMUM FROM WALL FACE OR BE 6'-8" MINIMUM TO THE UNDERSIDE OF THE FIXTURE AFF. COFFITS WITH FASTENING AND JOINT TAP AS REQUIRED FOR SPECIFIED RATING.
14. FIRE-RATED CEILINGS SHALL ALWAYS BE CONTINUOUS OVER CHASES/FURRED-OUT SPACES TO PREVENT THE WALL CAVITY FROM COMMUNICATING WITH THE FLOOR/CEILING. PROVIDE DETAIL OF ALL CHASES/FURRED-OUT SPACES TO PROJECT TO THE MAXIMUM FROM WALL FACE OR BE 6'-8" MINIMUM TO THE UNDERSIDE OF THE FIXTURE AFF.
15. SEE MECHANICAL DRAWINGS FOR DUCT ROUTING. SEE MECHANICAL DRAWINGS FOR ADDITIONAL INSULATION REQUIREMENTS AT DUCTS.
16. CEILING ACCESS PANELS ARE REQUIRED AT ALL DAMPERS, VALVES, TELECOM ACCESS PANELS AND SUMP MECHANICAL ACCESS PANELS. COORDINATE LOCATIONS PRIOR TO INSTALLATION OF ANY OF THESE SYSTEMS.

ELECTRICAL AND MECHANICAL INFORMATION ARE SHOWN FOR COORDINATION PURPOSES.
REFER TO MECHANICAL DRAWINGS AND ELECTRICAL DRAWINGS FOR GENERAL INFORMATION
AND LOCATIONS.

HATCH PATTERN INDICATE EXTENT OF CEILING TYPES
REFER TO CEILING ASSEMBLY FOR DETAIL INFORMATION

C10 - WOOD CEILING

C11 - SUSPENDED GYPSUM WALL BOARD

C12 - STONE TILE

C14 - ACOUSTICAL CEILING TILE

SQUARE RECESSED DOWNLIGHT

DECORATIVE SCORCE

DECORATIVE CUSTOM CHANDELIER

ROUND PENDANT LIGHT

J-BOX

LENNED LINEAR UTILITY STRIP

CONCEALED LINEAR UNDERCABINET STRIP

TRACK / RAIL / LINEAR LED

SURFACE-MOUNTED LIGHT BAR

SURFACE MOUNT PLANEL

SPRINKLER

SMOKE DETECTOR

COMBINATION SMOKE / CARBON MONOXIDE DETECTOR

FIRE ALARM SPEAKER

FIRE ALARM STROBE

FIRE ALARM COMBINATION SPEAKER / STROBE

COMBINATION SMOKE / HEAT DETECTOR

EXIT SIGN

SECURITY CAMERA

WIRELESS ACCESS POINT

AV SPEAKER

MOTORIZED SINGLE ROLLER SHDAD - EQ-02.00

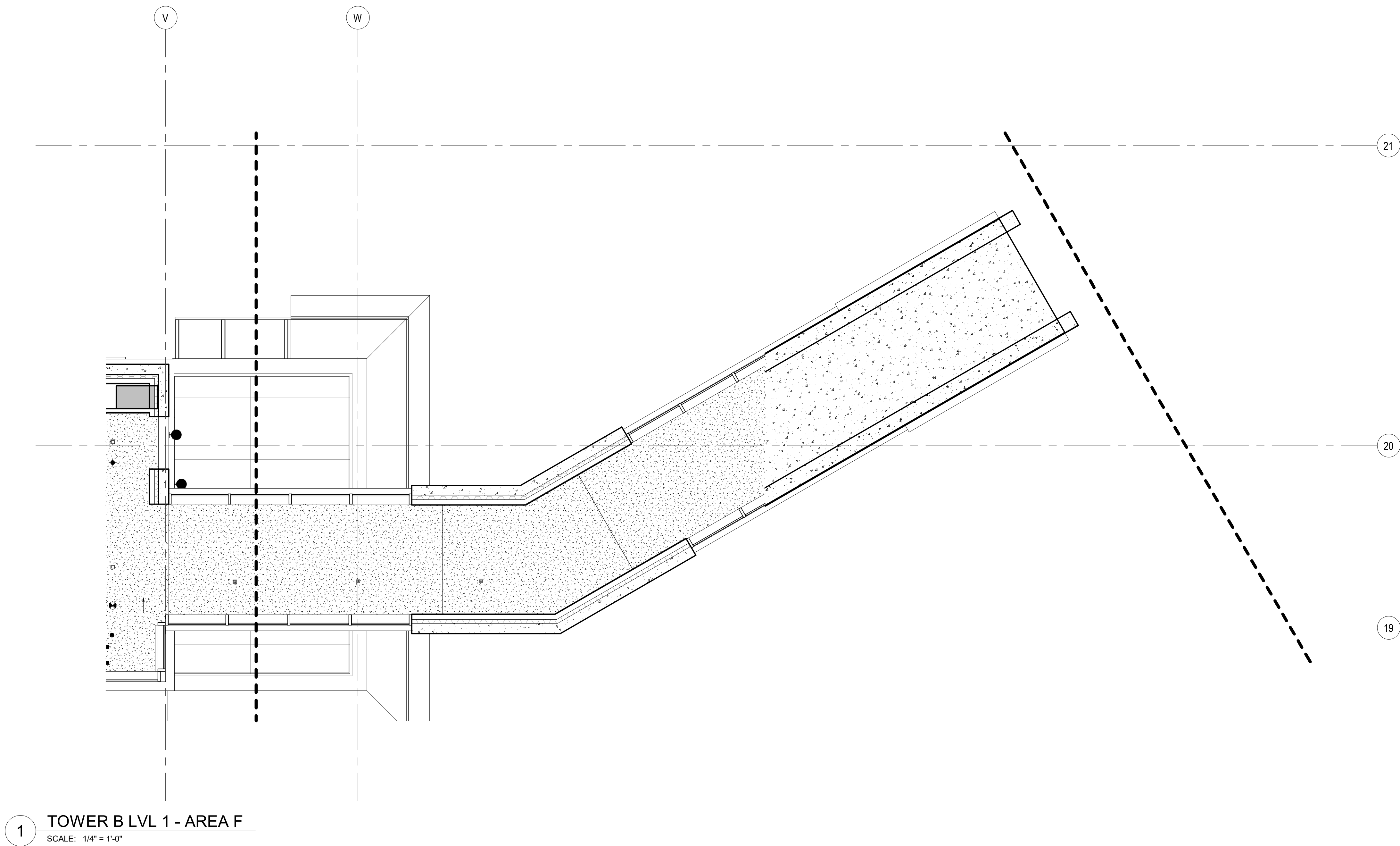
MOTORIZED DOUBLE ROLLER SHDAD - EQ-02.01

CEILING FAN - MECH EXHAUST

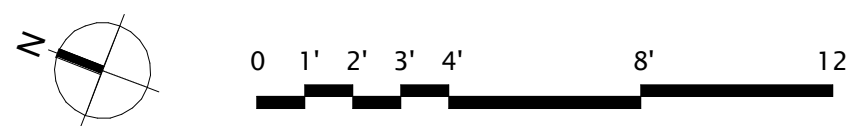
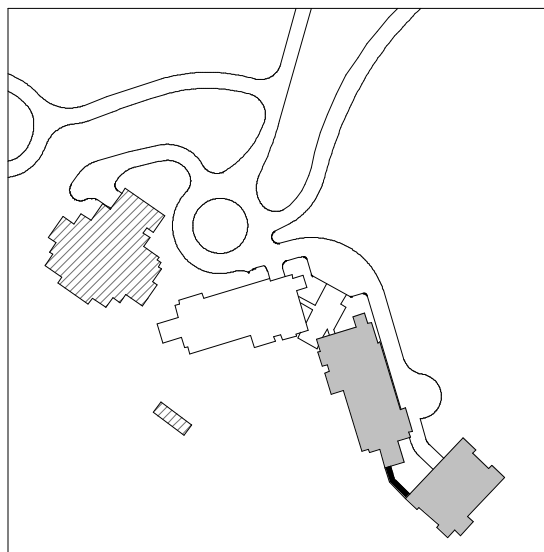
MECHANICAL LINEAR GRILLE

CEILING ACCESS PANEL

CEILING CONTROL POINT



1 TOWER B LVL 1 - AREA F
SCALE: 1/4" = 1'-0"



159 South Jackson St., Suite 600
Seattle, Washington 98104 USA
+1 206 624 5870 olsonkundig.com

Olson Kundig

SOMMET BLANC
9300 MARSAC AVE
PARK CITY, UT 84060



Aspen Group USA, LLC
PO Box 980022
Park City, Utah 84098

Pool Consultant
Cloward H2O
2696 N University Ave, Suite 290
Provo, UT 84604

Landscape Architect
EPG Design
6949 South High Tech Drive, Suite 100
Midvale, Utah 84047

Specifications Writer
Friday Group
88 Mainelli Road
Middlebury, VT

Code Consultant
Holmes
600 1st Avenue, Suite 200A
Seattle, WA 98104

Fire Protection Engineer
Jensen Hughes
One Research Drive, Suite 305C
Westborough, MA 01581

Vertical Transportation Consultant
Lerch Bates
19515 North Creek Parkway, Suite 300
Bothell, WA 98011

Structural Engineer
Magnusson Klemencic Associates
1301 5th Ave, Suite 3200
Seattle, WA 98101

Lighting Designer
O-
1319 SE MLK Blvd, Suite 210
Portland, Oregon 97219

Building Envelope Consultant
RDH
2101 N 34th St
Seattle, WA 98103

Accessibility Consultant
Studio Pacifica
2144 Westlake Ave N, Suite F
Seattle, WA 98109

MEP Engineer
WSP USA
1001 Fourth Ave., Suite 3100
Seattle, WA 98154

principal architect	TK, KM
project manager	TM, JB, LB, MD
drawn by	SK, SS, JR, CP, AL

checked by Checker
job no. 20062

revisions:

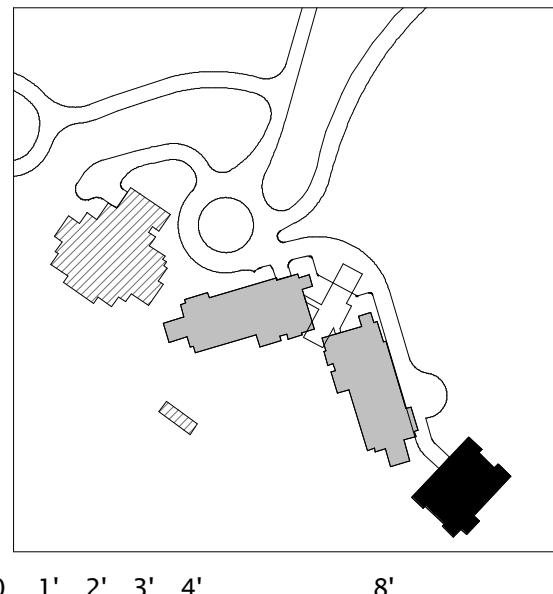
[illegible]

no.	date	t
-----	------	---

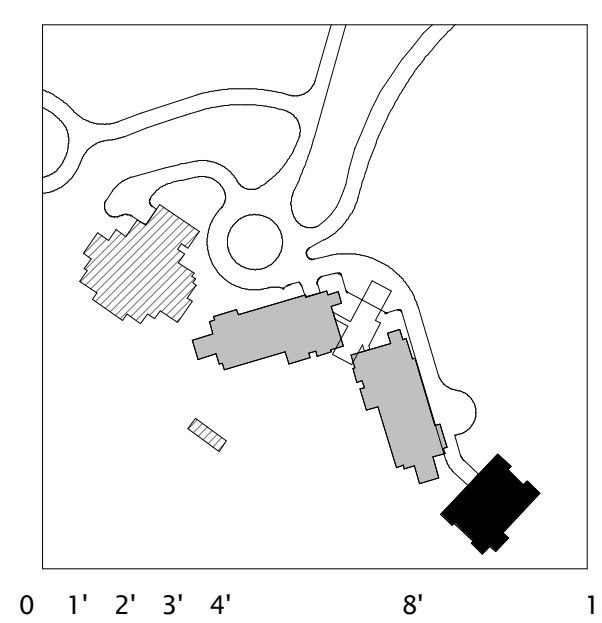
ISSUED FOR
CONSTRUCTION
11/18/2022

RCP - TOWER BC
CONNECTOR - AREA F

A6.1BC.1f



A6.1C.01



A6.1C.11

1

159 South Jackson St, Suite 600
Seattle, Washington 98104 USA
+1 206 624 5670 olsonkundig.com

Olson Kundig

SOMMET BLANC
9300 MARSAC AVE



Aspen Group USA, LLC
PO Box 980022
Park City, Utah 84098

Pool Consultant
Cloward H2O
2696 N University Ave, Suite 290
Provo, UT 84604

Landscape Architect
EPG Design
6949 South High Tech Drive, Suite 100
Midvale, Utah 84047

Specifications Writer
Friday Group
88 Mainelli Road
Middlebury, VT

Code Consultant
Holmes
600 1st Avenue, Suite 200A
Seattle, WA 98104

Fire Protection Engineer
Jensen Hughes
One Research Drive, Suite 305C
Westborough, MA 01581

Vertical Transportation Consultant
Lerch Bates
19515 North Creek Parkway, Suite 304
Bothell, WA 98011

Structural Engineer
Magnusson Klemencic Associates
1301 5th Ave, Suite 3200
Seattle, WA 98101

Lighting Designer
O-
1319 SE MLK Blvd, Suite 210
Portland, Oregon 97219

Building Envelope Consultant
RDH
2101 N 34th St
Seattle, WA 98103

Accessibility Consultant
Studio Pacifica
2144 Westlake Ave N, Suite F
Seattle, WA 98102

MEP Engineer
WSP USA
1001 Fourth Ave., Suite 3100

principal architect	TK, KM
project manager	TM, JB, LB, MD
drawn by	SK, SS, JR, CP, A NH, EK, BD, EB

checked by Checker
job no. 20052

revisions:

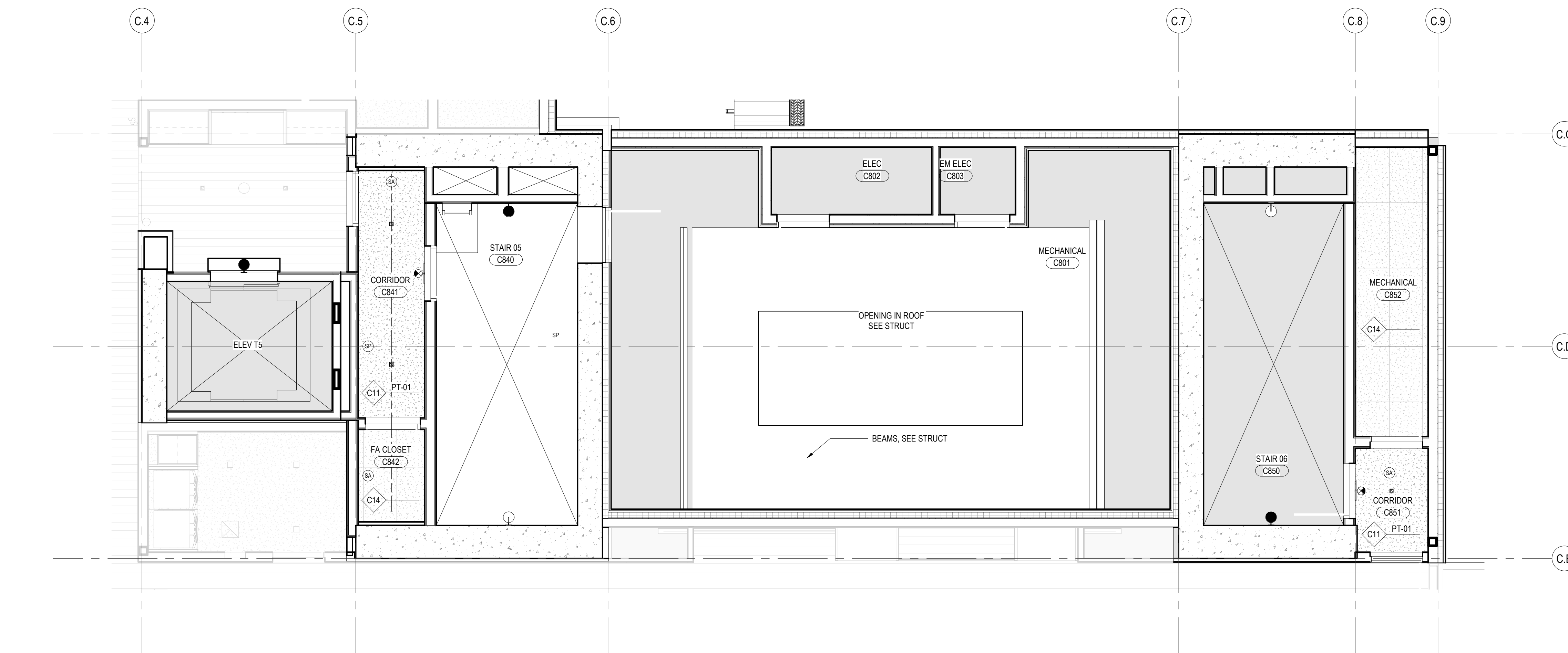
[illegible]

no.	date	by
-----	------	----

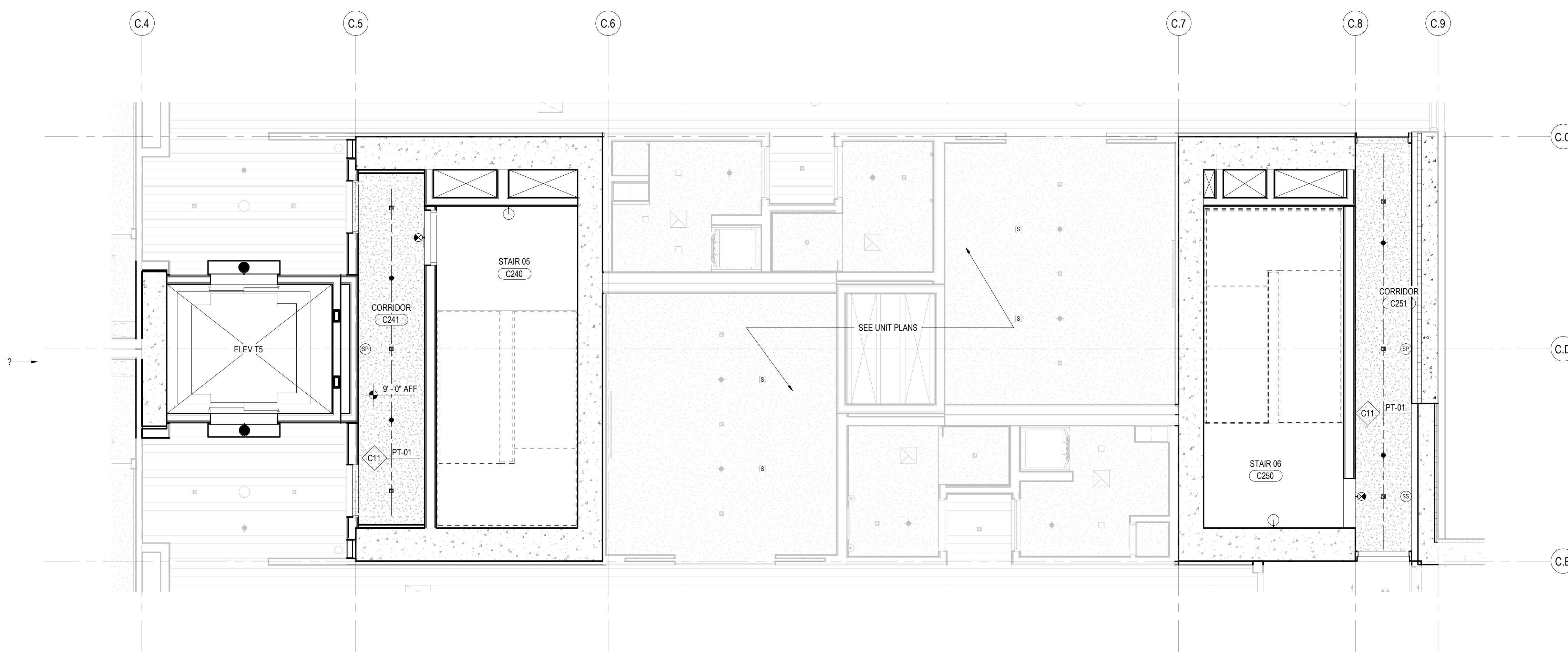
ISSUED FOR
CONSTRUCTION

RCP - TOWER C - CORES

A6.1C.12



2 ENLARGED RCP - TOWER C - LVL 8 - CORE
SCALE: 1/4" = 1'-0"



1 ENLARGED RCP - TOWER C - LVL 2-7 - CORE
SCALE: 1/4" = 1'-0"

HATCH PATTERN INDICATE EXTENT OF CEILING TYPES
REFER TO CEILING ASSEMBLY FOR DETAIL INFORMATION

HATCH PATTERN INDICATE EXTENT OF CEILING TYPES
REFER TO CEILING ASSEMBLY FOR DETAIL INFORMATION

