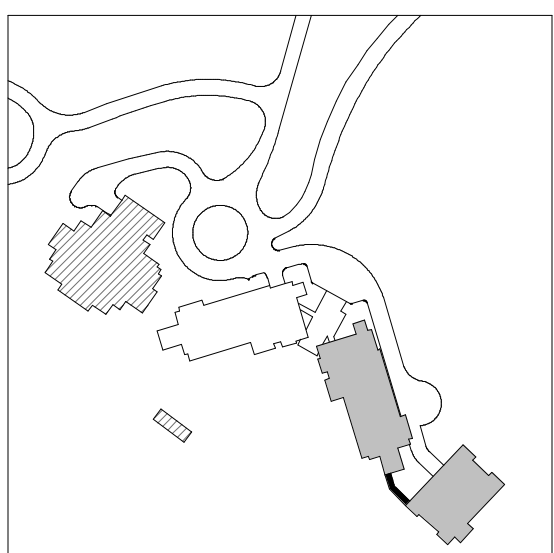
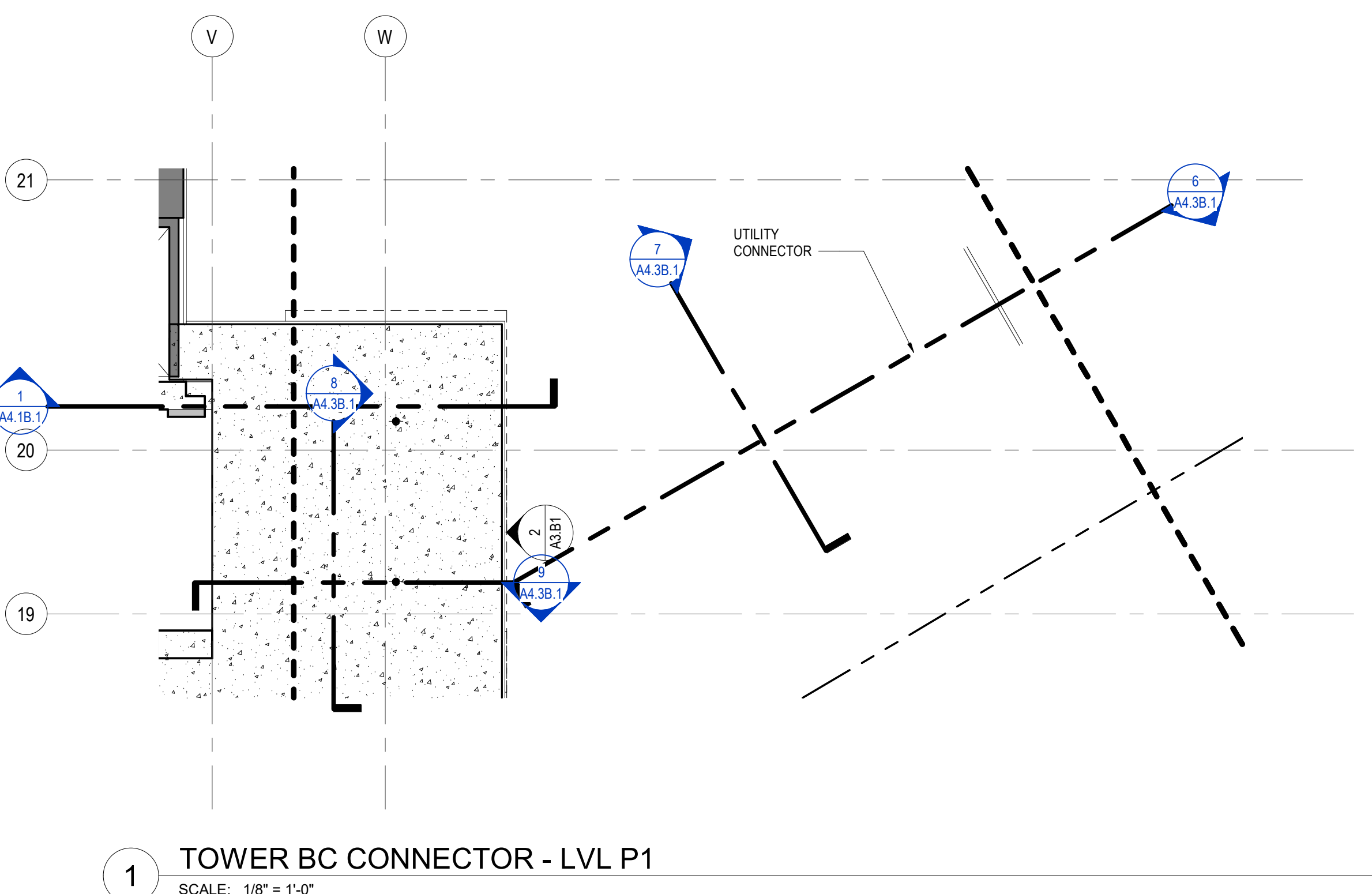
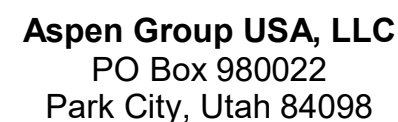


1. DIMENSIONS ARE TO FACE OF STUD OF EXTERIOR WALLS, CORRIDOR WALLS & INTERIOR WALLS. UNO
2. DIMENSIONS ARE TO CENTERLINE OF DEMISING WALLS. UNO
3. ALL EXPOSED STRUCTURAL STEEL TO RECEIVE 1 HR INTUMESCENT PAINTING
4. ALL FRAMED EXTERIOR WALLS TO BE SET BACK 505 FROM FACE OF CONCRETE TO ALLOW FOR FLUSH ALIGNMENT OF SHEATHING TO EDGE OF SLAB UNO
5. CASEWORK DIMENSIONS ARE TO FACE OF FINISH. UNO
6. SEE SHEETS A0.10 AND A0.11 FOR ASSEMBLIES.
7. ALL CORRIDOR WALLS ARE TYPE E6. UNO
8. ALL DEMISING WALLS ARE TYPE J6. UNO
9. ALL INTERIOR PARTITIONS ARE TYPE A6. UNO
10. ALL FURRING ABOVE CONCRETE STRUCTURAL COLUMNS TYPE G1. UNO
11. ALL VENT SHIRT WALLS ARE TYPE H4. UNO
12. REFER TO LIFE SAFETY PLAN A0.30, A0.31, A0.34 FOR FULL EXENT OF FIRE RATED WALLS.
13. UNIT PLAN LAYOUTS ON SHEETS A2.4A - A2.4R
14. ALL EXPOSED HSS COLUMNS TO BE PAINTED WITH 1-HR OF INTUMESCENT PAINT. UNO
15. REFER TO SHEET A0.08 FOR ANSI TYPE A ACCESSIBILITY REQUIREMENTS.
16. REFER TO SHEET A0.07 FOR ANSI TYPE B ACCESSIBILITY REQUIREMENTS.
17. REFER TO SHEET A0.06 FOR ADA PUBLIC SPACE ACCESSIBILITY REQUIREMENTS



SOMMET BLANC
9300 MARSAC AVE
PARK CITY, UT 84060



MEP Engineer
WSP USA
1001 Fourth Ave., Suite 3100
Seattle, WA 98154

no.	date	t
1	1990	1
2	1991	2
3	1992	3
4	1993	4
5	1994	5
6	1995	6
7	1996	7
8	1997	8
9	1998	9
10	1999	10
11	2000	11
12	2001	12
13	2002	13
14	2003	14
15	2004	15
16	2005	16
17	2006	17
18	2007	18
19	2008	19
20	2009	20
21	2010	21
22	2011	22
23	2012	23
24	2013	24
25	2014	25
26	2015	26
27	2016	27
28	2017	28
29	2018	29
30	2019	30
31	2020	31
32	2021	32
33	2022	33
34	2023	34
35	2024	35
36	2025	36
37	2026	37
38	2027	38
39	2028	39
40	2029	40
41	2030	41
42	2031	42
43	2032	43
44	2033	44
45	2034	45
46	2035	46
47	2036	47
48	2037	48
49	2038	49
50	2039	50
51	2040	51
52	2041	52
53	2042	53
54	2043	54
55	2044	55
56	2045	56
57	2046	57
58	2047	58
59	2048	59
60	2049	60
61	2050	61
62	2051	62
63	2052	63
64	2053	64
65	2054	65
66	2055	66
67	2056	67
68	2057	68
69	2058	69
70	2059	70
71	2060	71
72	2061	72
73	2062	73
74	2063	74
75	2064	75
76	2065	76
77	2066	77
78	2067	78
79	2068	79
80	2069	80
81	2070	81
82	2071	82
83	2072	83
84	2073	84
85	2074	85
86	2075	86
87	2076	87
88	2077	88
89	2078	89
90	2079	90
91	2080	91
92	2081	92
93	2082	93
94	2083	94
95	2084	95
96	2085	96
97	2086	97
98	2087	98
99	2088	99
100	2089	100
101	2090	101
102	2091	102
103	2092	103
104	2093	104
105	2094	105
106	2095	106
107	2096	107
108	2097	108
109	2098	109
110	2099	110
111	2100	111
112	2101	112
113	2102	113
114	2103	114
115	2104	115
116	2105	116
117	2106	117
118	2107	118
119	2108	119
120	2109	120
121	2110	121
122	2111	122

ISSUED FOR
CONSTRUCTION
11/18/2022

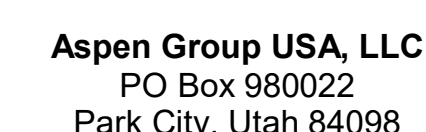
PLAN - TOWER BC
CONNECTOR

A2.2BC.11

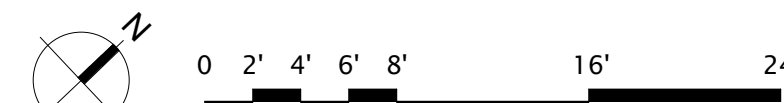
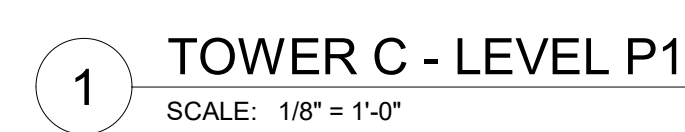
-

Olson Kundig

SOMMET BLANC
9300 MARSAC AVE
PARK CITY, UT 84060



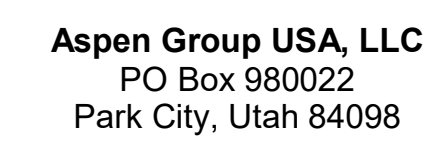
A2.2C.01



-

Olson Kundig

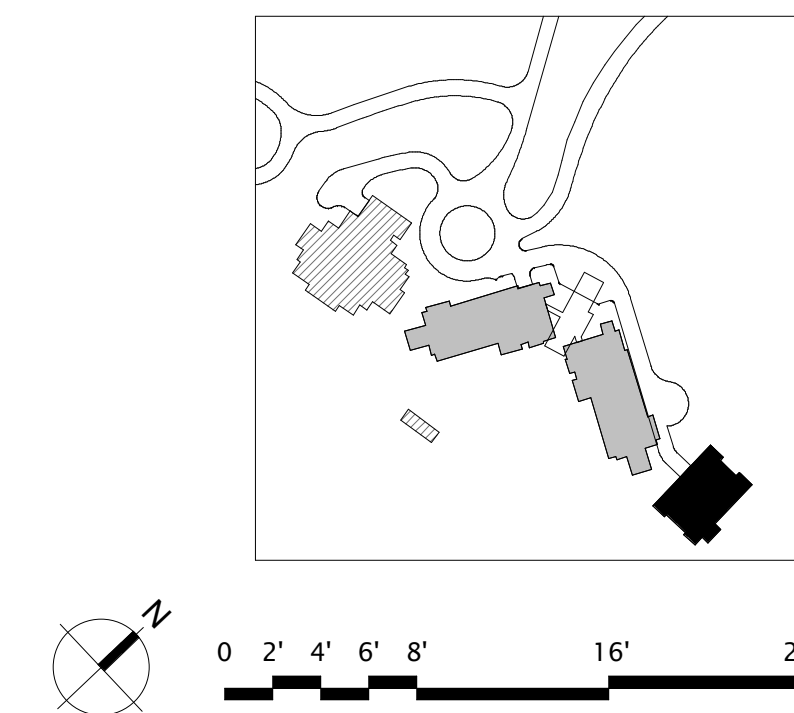
SOMMET BLANC
9300 MARSAC AVE
PARK CITY, UT 84060



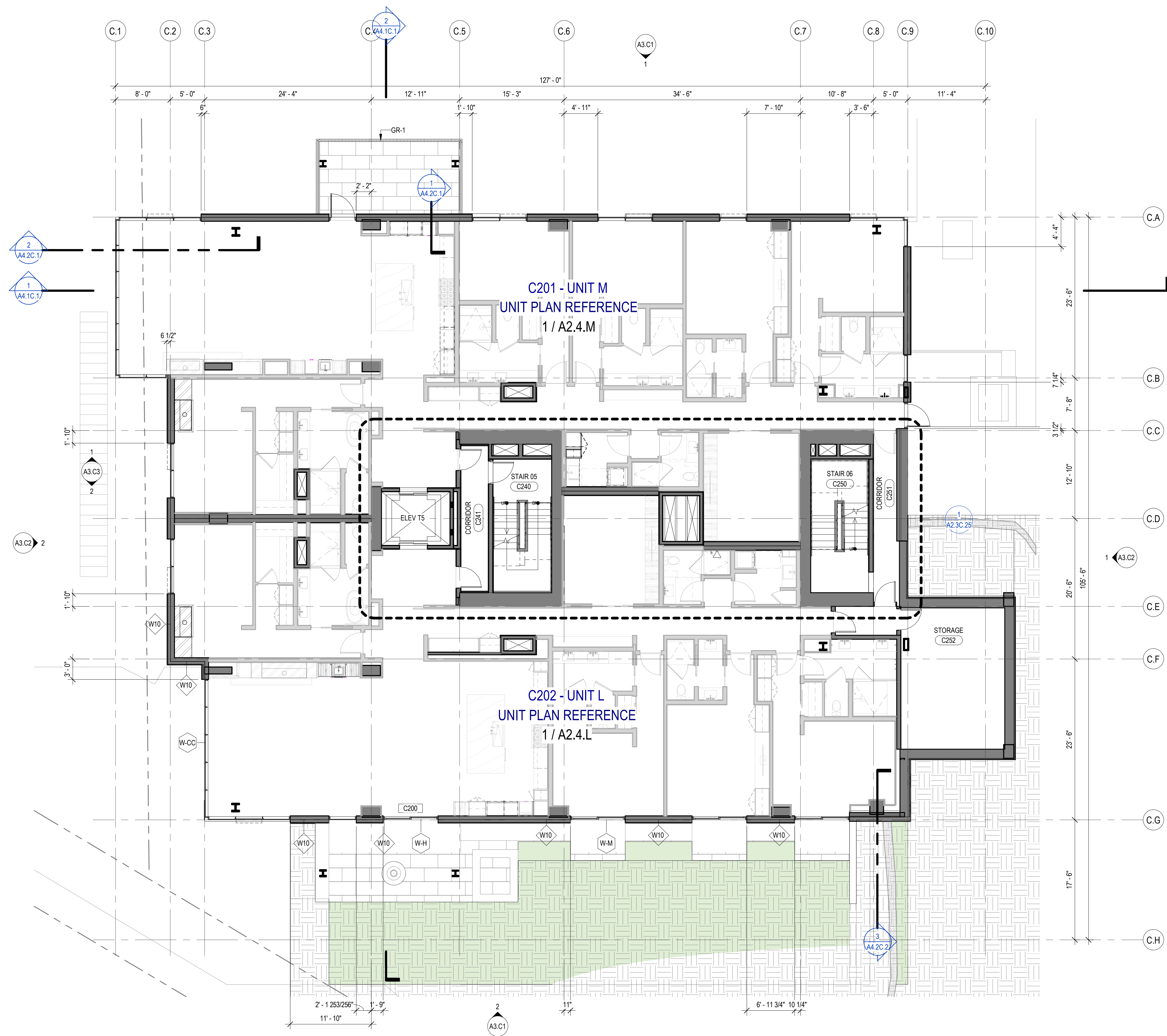
ISSUED FOR
CONSTRUCTION
11/18/2022

PLAN - TOWER C - LVL 1

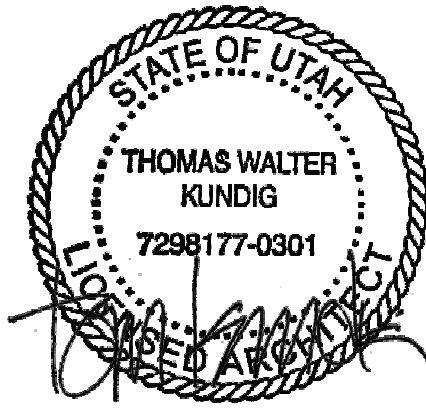
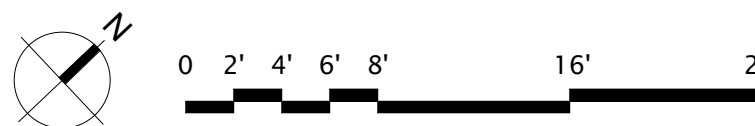
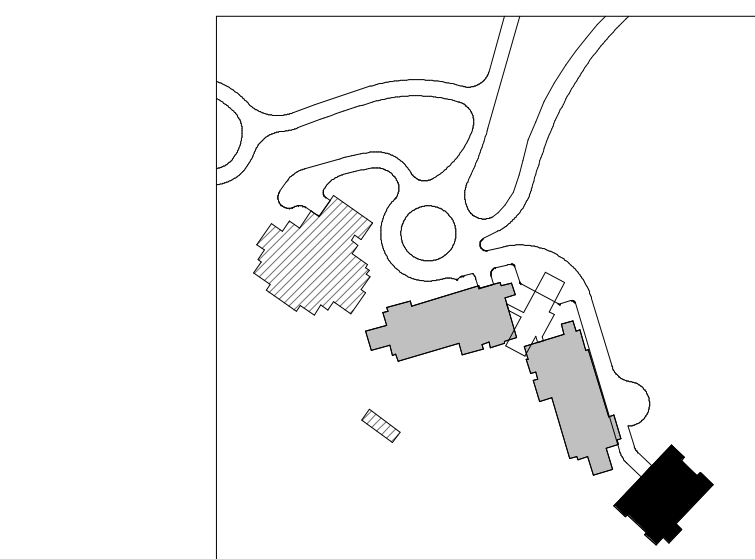
A2.2C.11



- PLAN GENERAL NOTES
1. DIMENSIONS ARE TO FACE OF STUD OF EXTERIOR WALLS, CORRIDOR WALLS & INTERIOR WALLS. UNO.
 2. DIMENSIONS ARE TO CENTERLINE OF DEMISING WALLS. UNO.
 3. AT FRAMED EXTERIOR WALLS, FRAMING TO BE SET BACK 5/8" FROM FACE OF CONCRETE TO ALLOW FOR FLUSH ALIGNMENT OF SHEATHING TO EDGE OF SLAB UNO.
 4. CASEWORK DIMENSIONS ARE TO FACE OF FINISH UNO.
 5. SEE SHEETS A0.10 AND A0.11 FOR ASSEMBLIES.
 6. ALL CORRIDOR WALLS ARE TYPE B1. UNO.
 7. ALL DEMISING WALLS ARE TYPE J6. UNO.
 8. ALL INTERIOR PARTITIONS ARE TYPE A1. UNO.
 9. ALL FURRING AROUND CONCRETE STRUCTURAL COLUMNS TYPE G1. UNO.
 10. ALL VENT SHIRT WALLS ARE TYPE M4. UNO.
 11. REFER TO LIFE SAFETY PLANS A0.30 - A0.34 FOR FULL EXTENT OF FIRE RATED WALLS.
 12. UNIT PLAN LAYOUTS ON SHEETS A2.4A - A2.4R.
 13. ALL EXPOSED HSS COLUMNS TO BE PAINTED WITH 1-HR OF INTUMESCENT PAINT. UNO.
 14. REFER TO SHEET A0.08 FOR ANSI TYPE B ACCESSIBILITY REQUIREMENTS.
 15. REFER TO SHEET A0.07 FOR ANSI TYPE A ACCESSIBILITY REQUIREMENTS.
 16. REFER TO SHEET A0.06 FOR ADA PUBLIC SPACE ACCESSIBILITY REQUIREMENTS.



1 TOWER C - LEVEL 2
SCALE: 1/8" = 1'-0"



109 South Jackson St., Suite 600
Seattle, Washington 98104 USA
+1 206 424 3810 oolsonkundig.com

Olson Kundig

SOMMET BLANC
9300 MARSA CAYE
PARK CITY, UT 84060



Aspen Group USA, LLC
PO Box 980022
Park City, Utah 84098

Pool Consultant
Howard H2O
2696 N University Ave., Suite 250
Provo, UT 84604

Landscape Architect
EPG Design
6940 South High Tech Drive, Suite 100
Midvale, Utah 84047

Specifications Writer
Friday Group
88 Mainelli Road
Middlebury, VT

Code Consultant
Holmes
600 1st Avenue, Suite 200A
Seattle, WA 98104

Fire Protection Engineer
Jensen Hughes
One Research Drive, Suite 305C
Westborough, MA 01581

Vertical Transportation Consultant
Larch Bates
19515 North Creek Parkway, Suite 304
Bothell, WA 98011

Structural Engineer
Magnusson Klemencic Associates
1301 5th Ave., Suite 3200
Seattle, WA 98101

Lighting Designer
O
1319 SE MLK Blvd., Suite 210
Portland, Oregon 97219

Building Envelope Consultant
RDH
2101 N 34th St
Seattle, WA 98103

Accessibility Consultant
Studio Pacifica
2144 Westlake Ave N, Suite F
Seattle, WA 98109

MEP Engineer
WSP USA
1001 Fourth Ave., Suite 3100
Seattle, WA 98104

principal architect TK, KM
project manager TM, JB, LB, MD
drawn by SK, SS, JR, CP, AL
NR, EK, BD, EB

checked by Checker
job no. 2052
date 11/18/2022

revisions:

1 09/02/22 BUILDING PERMIT
RESUBMITTAL #1

no. date by

ISSUED FOR
CONSTRUCTION
11/18/2022

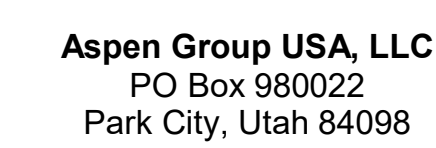
PLAN - TOWER C - LVL 2

A2.2C.12

-

Olson Kundig

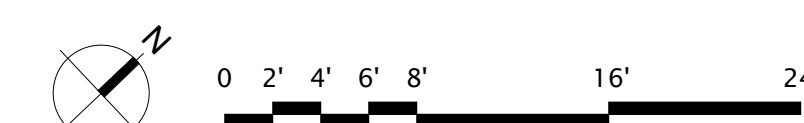
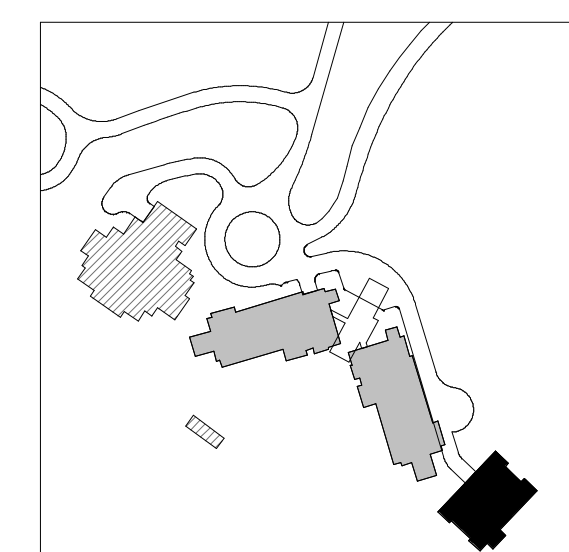
SOMMET BLANC
9300 MARSAC AVE
PARK CITY, UT 84060



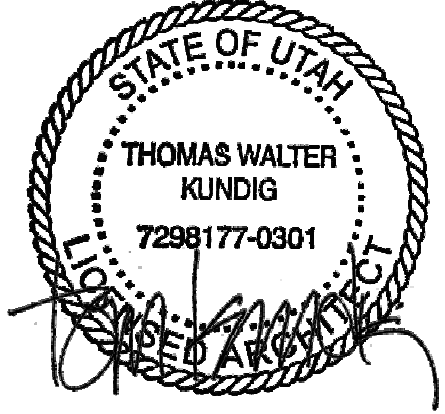
no.	date	by
-----	------	----

PLAN - TOWER C - LVL 3

A2.2C.13



- PLAN GENERAL NOTES
1. DIMENSIONS ARE TO FACE OF STUD OF EXTERIOR WALLS, CORRIDOR WALLS & INTERIOR WALLS, UNO.
 2. DIMENSIONS ARE TO CENTERLINE OF DEMISING WALLS, UNO.
 3. AT FRAMED EXTERIOR WALLS, FRAMING TO BE SET BACK 5/8" FROM FACE OF CONCRETE TO ALLOW FOR FLUSH ALIGNMENT OF SHEATHING TO EDGE OF SLAB UNO.
 4. CASWORK DIMENSIONS ARE TO FACE OF FINISH UNO.
 5. SEE SHEETS A0.10 AND A0.11 FOR ASSEMBLIES.
 6. ALL CORRIDOR WALLS ARE TYPE 6R, UNO.
 7. ALL DEMISING WALLS ARE TYPE A6, UNO.
 8. ALL INTERIOR PARTITIONS ARE TYPE A4, UNO.
 9. ALL FURRING AROUND CONCRETE STRUCTURAL COLUMNS TYPE G1, UNO.
 10. ALL VENT SHAFT WALLS ARE TYPE M4, UNO.
 11. REFER TO LIFE SAFETY PLANS A2.31- A0.34 FOR FULL EXTENT OF FIRE RATED WALLS.
 12. UNIT PLAN LAYOUTS ON SHEETS A2.4A- A2.4R.
 13. ALL EXPOSED HSB COLUMNS TO BE PAINTED WITH 1-HR OF INTUMESCENT PAINT, UNO.
 14. REFER TO SHEET A0.08 FOR ANSI TYPE B ACCESSIBILITY REQUIREMENTS.
 15. REFER TO SHEET A0.07 FOR ANSI TYPE A ACCESSIBILITY REQUIREMENTS.
 16. REFER TO SHEET A0.08 FOR ADA PUBLIC SPACE ACCESSIBILITY REQUIREMENTS.



109 South Jackson B, Suite 600
Seattle, Washington 98104 USA
+1 206 424 3810 oolsonkundig.com

Olson Kundig

SOMMET BLANC
9300 MARSA C AVE
PARK CITY, UT 84060



Aspen Group USA, LLC
PO Box 980022
Park City, Utah 84098

Pool Consultant
Cloward & Co
2696 N University Ave, Suite 250
Provo, UT 84604

Landscape Architect
EPG Design
6940 South High Tech Drive, Suite 100
Midvale, Utah 84047

Specifications Writer
Friday Group
88 Mainelli Road
Middlebury, VT

Code Consultant
Holmes
600 1st Avenue, Suite 200A
Seattle, WA 98104

Fire Protection Engineer
Jensen Hughes
One Research Drive, Suite 305C
Westborough, MA 01581

Vertical Transportation Consultant
Larch Bates
19515 North Creek Parkway, Suite 304
Bothell, WA 98011

Structural Engineer
Magnusson Klemencic Associates
1301 5th Ave, Suite 3200
Seattle, WA 98101

Lighting Designer
O
1319 SE MLK Blvd, Suite 210
Portland, Oregon 97219

Building Envelope Consultant
RDH
2101 N 34th St
Seattle, WA 98103

Accessibility Consultant
Studio Pacifica
2144 Westlake Ave N, Suite F
Seattle, WA 98109

MEP Engineer
WSP USA
1001 Fourth Ave., Suite 3100
Seattle, WA 98154

principal architect TK, KM
project manager TM, JR, LS, MD
drawn by SK, SS, JR, CP, AL
checked by NH, EK, BD, ER

checked by Checker
job no. 2052
date 11/18/2022

revisions:

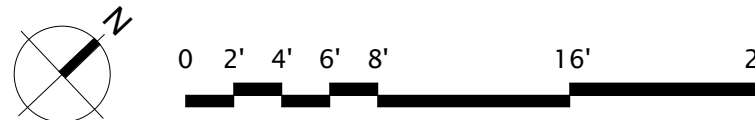
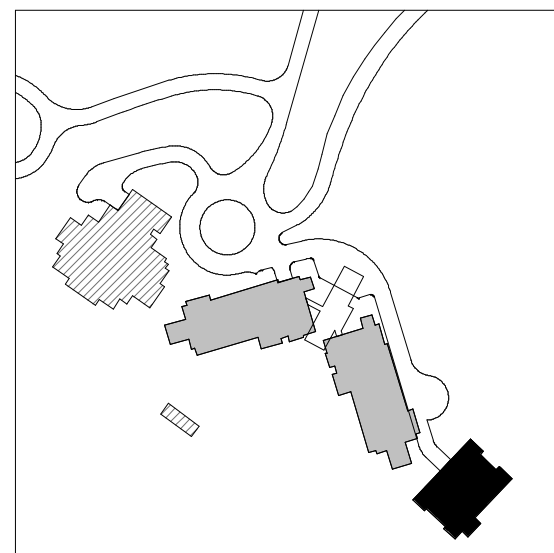
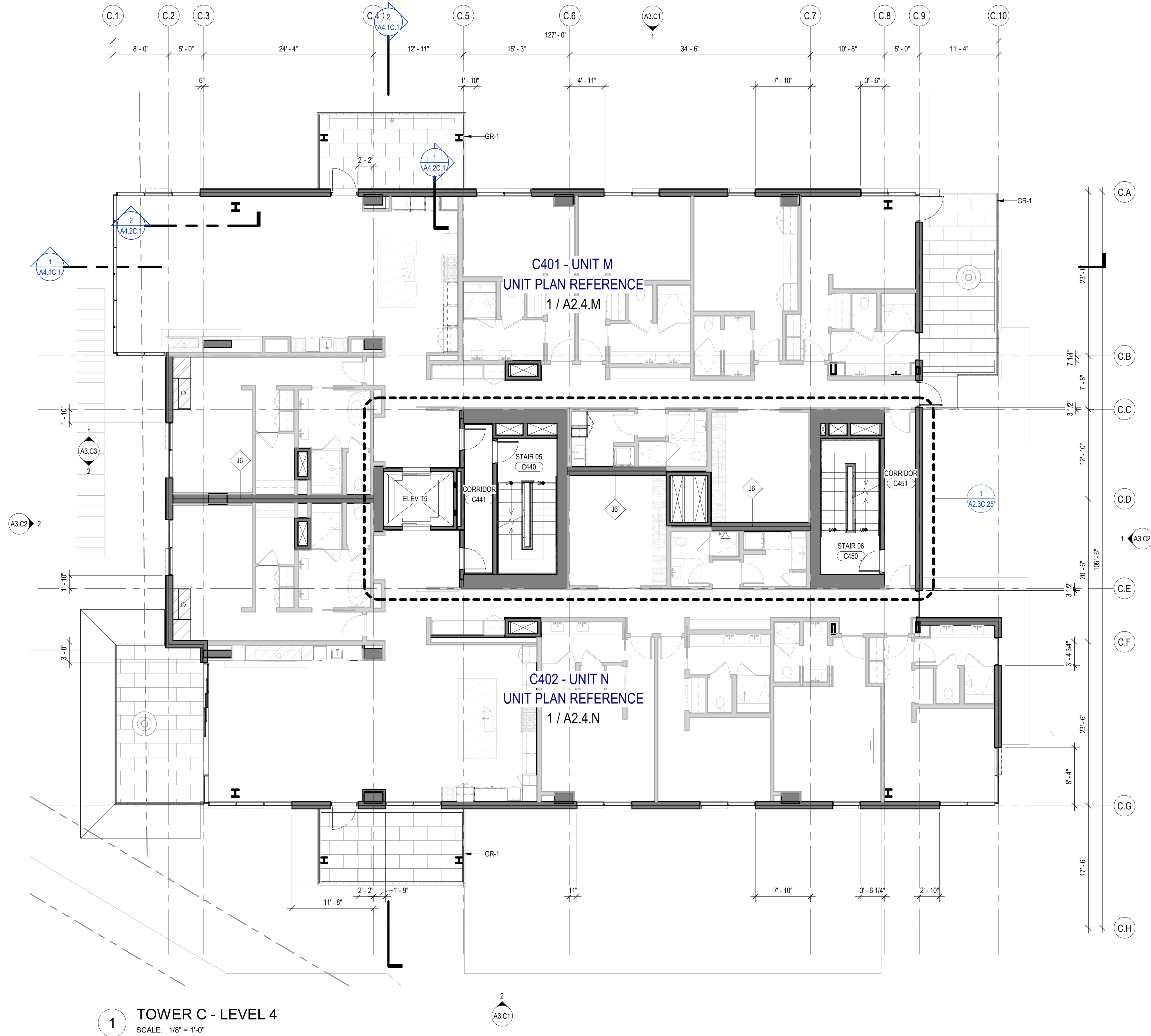
no. date by

ISSUED FOR CONSTRUCTION

11/18/2022

PLAN - TOWER C - LVL 4

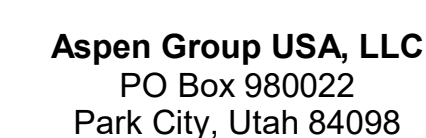
A2.2C.14



-

Olson Kundig

SOMMET BLANC
9300 MARSAC AVE
PARK CITY, UT 84060



no.	date	by
-----	------	----

ISSUED FOR
CONSTRUCTION
11/18/2022

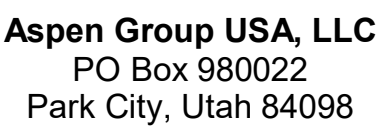
PLAN - TOWER C - LVL 5

A2.2C.15

-

Olson Kundig

SOMMET BLANC
9300 MARSAC AVE
PARK CITY, UT 84060



MEP Engineer
WSP USA
1001 Fourth Ave., Suite 3100
Seattle, WA 98154

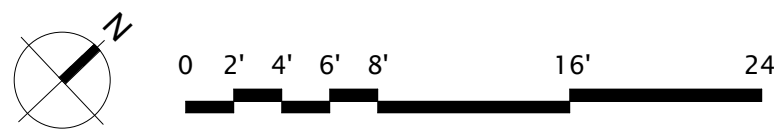
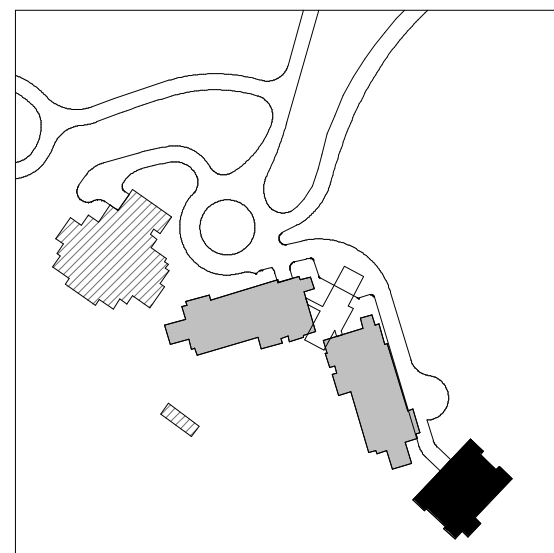
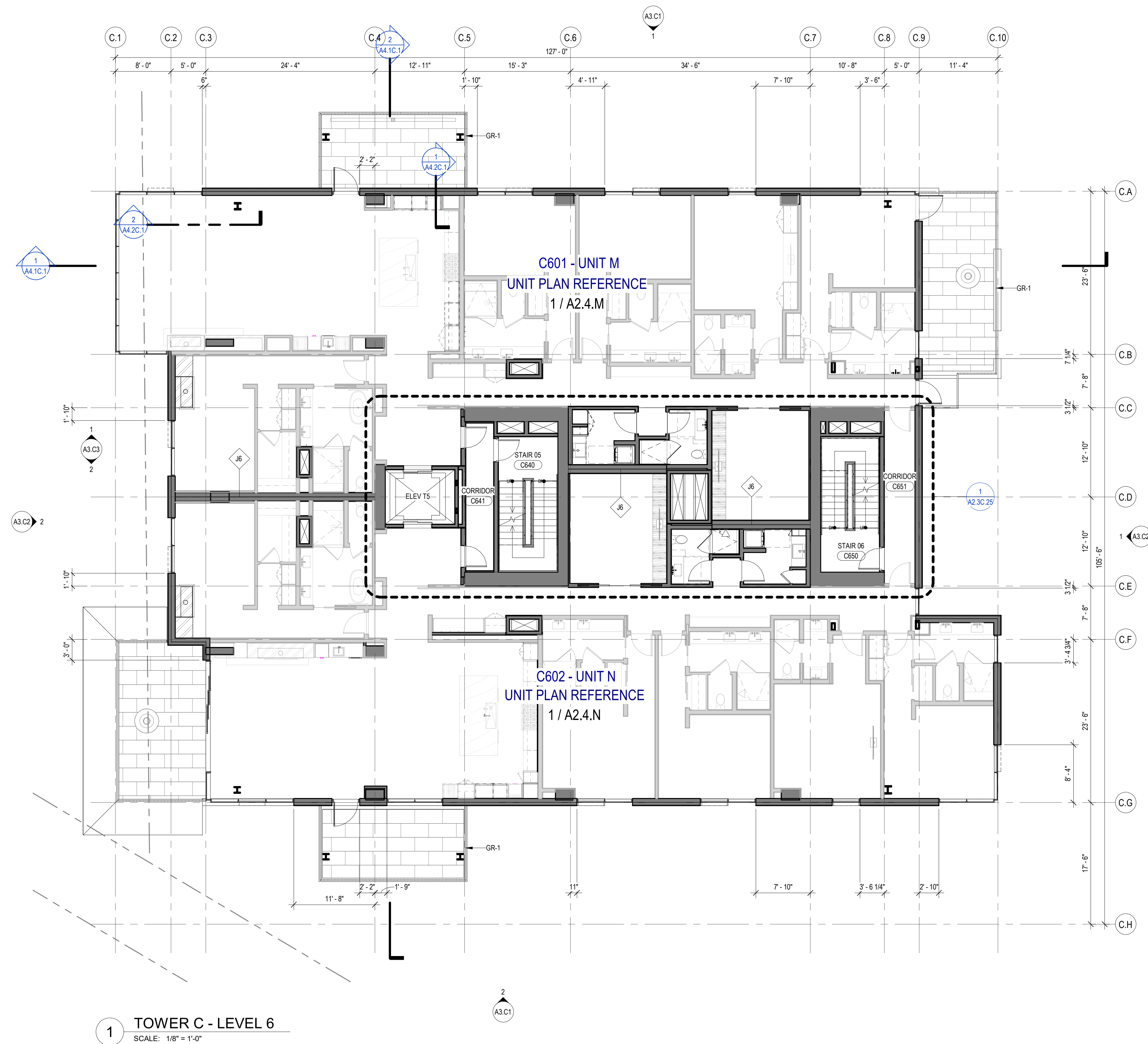
sions:

no. date by

ISSUED FOR
CONSTRUCTION
11/18/2022


PLAN - TOWER C - LVL 6

A2.2C.16



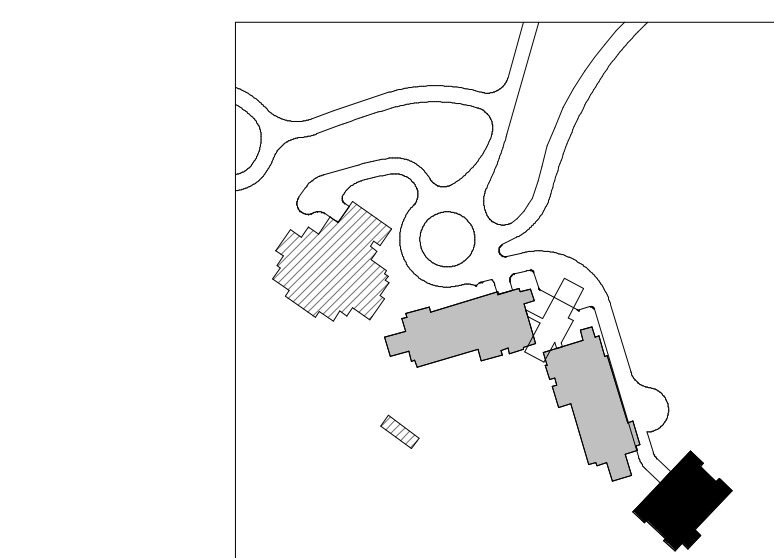
-

Olson Kundig

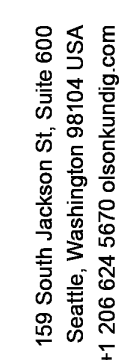
 **ASPEN GROUP**
Aspen Group USA, LLC
PO Box 980022
Park City, Utah 84098

no.	date	by
-----	------	----

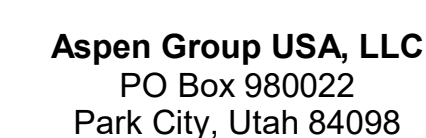
PLAN - TOWER C - LVL 7
A2.2C.17



1. DIMENSIONS ARE TO FACE OF STUD OF EXTERIOR WALLS, CORRIDOR WALLS & INTERIOR WALLS. UNO
2. DIMENSIONS ARE TO CENTERLINE OF BEARING WALLS. UNO
3. ALL BEARING EXTERIOR WALLS FRAMING TO BE SET BACK UP FROM FACE OF CONCRETE FOUNDATION TO ALLOW FOR FLUSH ALIGNMENT OF SHEATHING TO EDGE OF SLAB UNO
4. GASEATED DIMENSIONS ARE TO FACE OF SHEATHING UNO
5. SEE SHEETS A0.10 AND A0.11 FOR ASSEMBLIES
6. ALL CORRIDOR WALLS ARE TYPE ER UNO
7. ALL BEARING WALLS ARE TYPE BR UNO
8. ALL INTERIOR PARTITIONS ARE TYPE A0. UNO
9. ALL FURRING ABOVE CONCRETE STRUCTURAL COLUMNS TYPE G1. UNO
10. ALL VENT SHUT WALLS ARE TYPE V1. UNO
11. REFER TO LIFE SAFETY PLANS A0.34 - A0.44 FOR FULL EXPLANATION OF FIRE RATED WALLS.
12. UNO PLAN LAYOUTS ON SHEETS A2.0 - A2.4R
13. ALL EXTERIOR WALLS SHALL BE FINISHED WITH 1/4" OR THICKNESS PAINT, UNO
14. REFER TO SHEET A0.08 FOR TYPE B ACCESSIBILITY REQUIREMENTS.
15. REFER TO SHEET A0.09 FOR TYPE B ACCESSIBILITY REQUIREMENTS.
16. REFER TO SHEET A0.10 FOR TYPE B ACCESSIBILITY REQUIREMENTS.



SOMMET BLANC
9300 MARSAC AVE
PARK CITY, UT 84060



Pool Consultant
Cloward H2O
2696 N University Ave, Suite 290
Provo, UT 84604

Landscape Architect
EPG Design
6949 South High Tech Drive, Suite 100
Midvale, Utah 84047

Specifications Writer
Friday Group
88 Mainelli Road
Middlebury, VT

Code Consultant
Holmes
600 1st Avenue, Suite 200A
Seattle, WA 98104

Fire Protection Engineer
Jensen Hughes
One Research Drive, Suite 305C
Westborough, MA 01581

Vertical Transportation Consultant
Lerch Bates
19515 North Creek Parkway, Suite 300
Bothell, WA 98011

Structural Engineer
Magnusson Klemencic Associates
1301 5th Ave, Suite 3200
Seattle, WA 98101

Lighting Designer
O-
1319 SE MLK Blvd, Suite 210
Portland, Oregon 97219

Building Envelope Consultant
RDH
2101 N 34th St
Seattle, WA 98103

Accessibility Consultant
Studio Pacifica
2144 Westlake Ave N, Suite F
Seattle, WA 98109

MEP Engineer
WSP USA
1001 Fourth Ave., Suite 3100
Seattle, WA 98154

principal architect TK, KM
project manager TM, JB, LB, MD
drawn by SK, SS, JR, CP, AL,
HU, TK, BS, CP

checked by	Checker
job no.	20062
date	11/10/2020

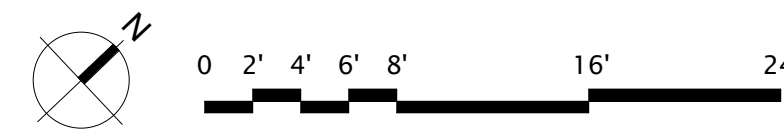
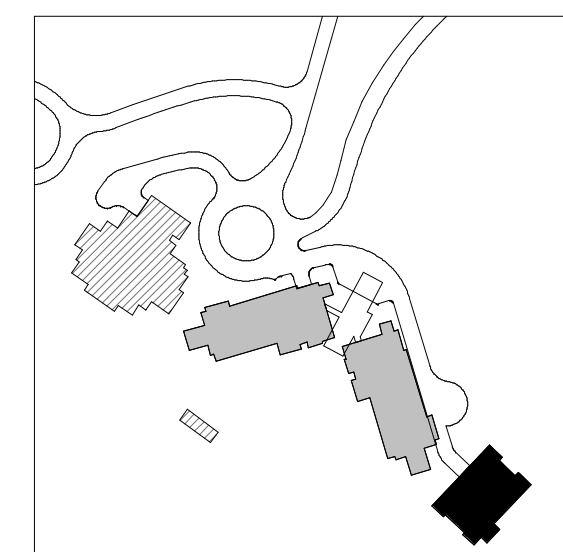
revisions:

RESUBMITTAL #1	
no.	date

ISSUED FOR
CONSTRUCTION

PLAN - TOWER C - LVL 8

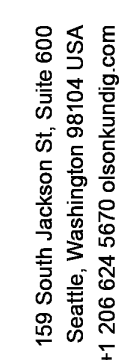
A2.2C.19



1 TOWER C - LEVEL 8
SCALE: 1/8" = 1'-0"

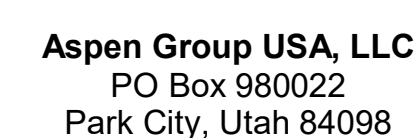
2 TOWER C - ROOF - MECHANICAL PLENUM - LOWER
SCALE: 1/8" = 1'-0"

1. DIMENSIONS ARE TO FACE OF STUD OF EXTERIOR WALLS, CORRIDOR WALLS & INTERIOR WALLS. UNO
2. DIMENSIONS ARE TO CENTERLINE OF BEARING WALLS. UNO
3. ALL BEARING EXTERIOR WALLS FRAMING TO BE SET BACK UP FROM FACE OF CONCRETE TO ALLOW FOR FLUSH ALIGNMENT OF SHEATHING TO EDGE OF SLAB UNO
4. GASEOUS DIMENSIONS ARE TO FACE OF SHEATHING UNO
5. SEE SHEETS A0.10 AND A0.11 FOR ASSEMBLIES
6. ALL CORRIDOR WALLS ARE TYPE ER UNO
7. ALL BEARING WALLS ARE TYPE BR UNO
8. ALL INTERIOR PARTITIONS ARE TYPE A0. UNO
9. ALL FURRING ABOVE CONCRETE STRUCTURAL COLUMNS TYPE G1. UNO
10. ALL VENT SHUT WALLS ARE TYPE V1. UNO
11. REFER TO LIFE SAFETY PLANS A0.34 - A0.44 FOR FULL EXPLANATION OF FIRE RATED WALLS.
12. UNO PLAN LAYOUTS ON SHEETS A2.0 - A2.4R
13. ALL EXTERIOR WALLS SHALL BE FINISHED WITH 1/4" OR THICKNESS PAINT, UNO
14. REFER TO SHEET A0.08 FOR TYPE B ACCESSIBILITY REQUIREMENTS.
15. REFER TO SHEET A0.07 FOR TYPE A ACCESSIBILITY REQUIREMENTS.
16. REFER TO SHEET A0.09 FOR TYPE B ACCESSIBILITY REQUIREMENTS.



Olson Kundig

SOMMET BLANC
9300 MARSAC AVE
PARK CITY, UT 84060



Pool Consultant
Cloward H2O
2696 N University Ave, Suite 290
Provo, UT 84604

Landscape Architect
EPG Design
6949 South High Tech Drive, Suite 100
Midvale, Utah 84047

Specifications Writer
Friday Group
88 Mainelli Road
Middlebury, VT

Code Consultant
Holmes
600 1st Avenue, Suite 200A
Seattle, WA 98104

Fire Protection Engineer
Jensen Hughes
One Research Drive, Suite 305C
Westborough, MA 01581

Vertical Transportation Consultant
Lerch Bates
19515 North Creek Parkway, Suite 300
Bothell, WA 98011

Structural Engineer
Magnusson Klemencic Associates
1301 5th Ave, Suite 3200
Seattle, WA 98101

Lighting Designer
O.
1319 SE MLK Blvd, Suite 210
Portland, Oregon 97219

Building Envelope Consultant
RDH
2101 N 34th St
Seattle, WA 98103

Accessibility Consultant
Studio Pacifica
2144 Westlake Ave N, Suite F
Seattle, WA 98109

MEP Engineer
WSP USA
1001 Fourth Ave., Suite 3100
Seattle, WA 98154

principal architect TK, KM
project manager TM, JB, LB, MD
drawn by SK, SS, JR, CP, AL,
ML, EK, NS, CP

checked by	Checker
job no.	20062
date	11/18/2022

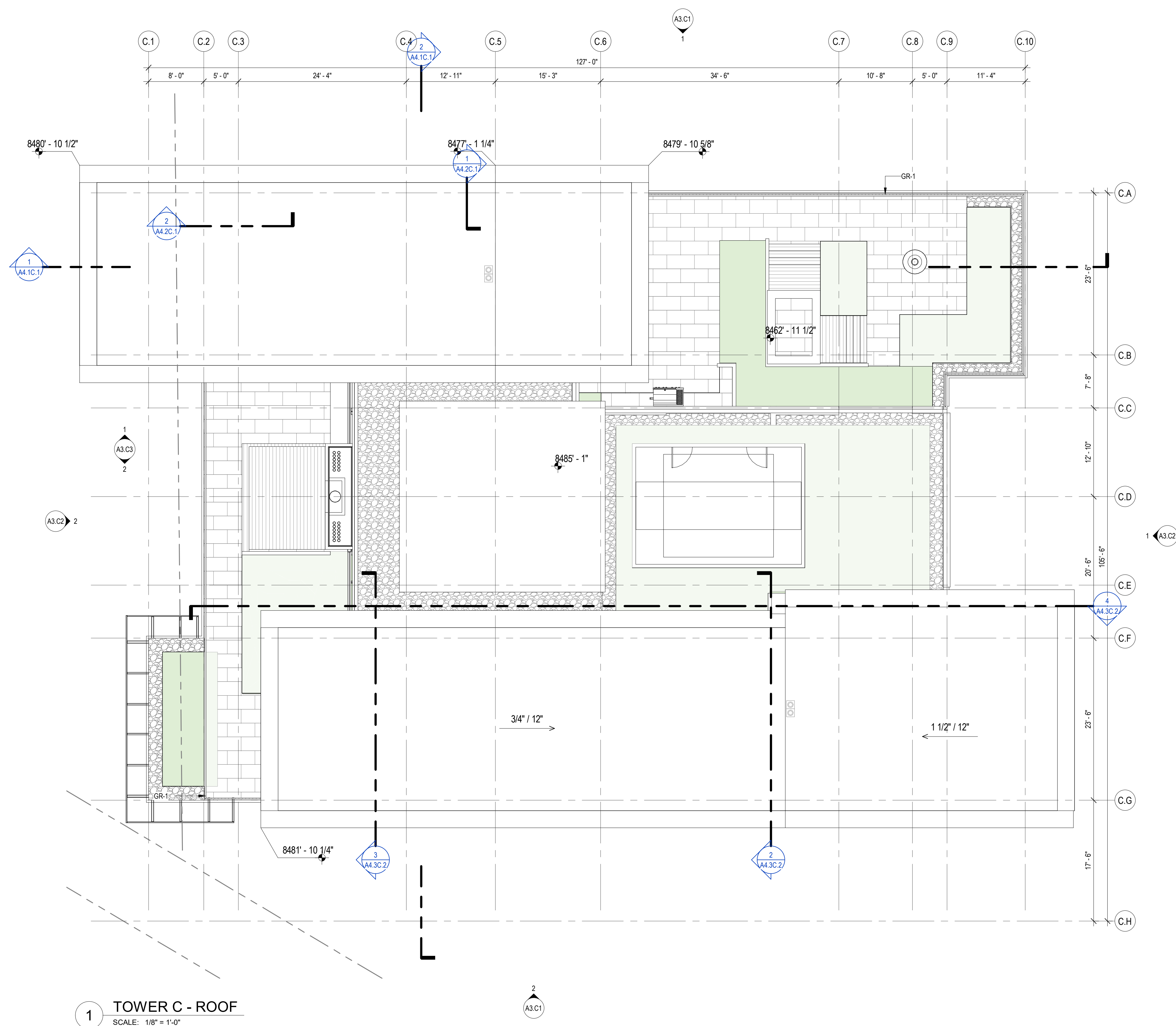
revisions:

no.	date	by
-----	------	----

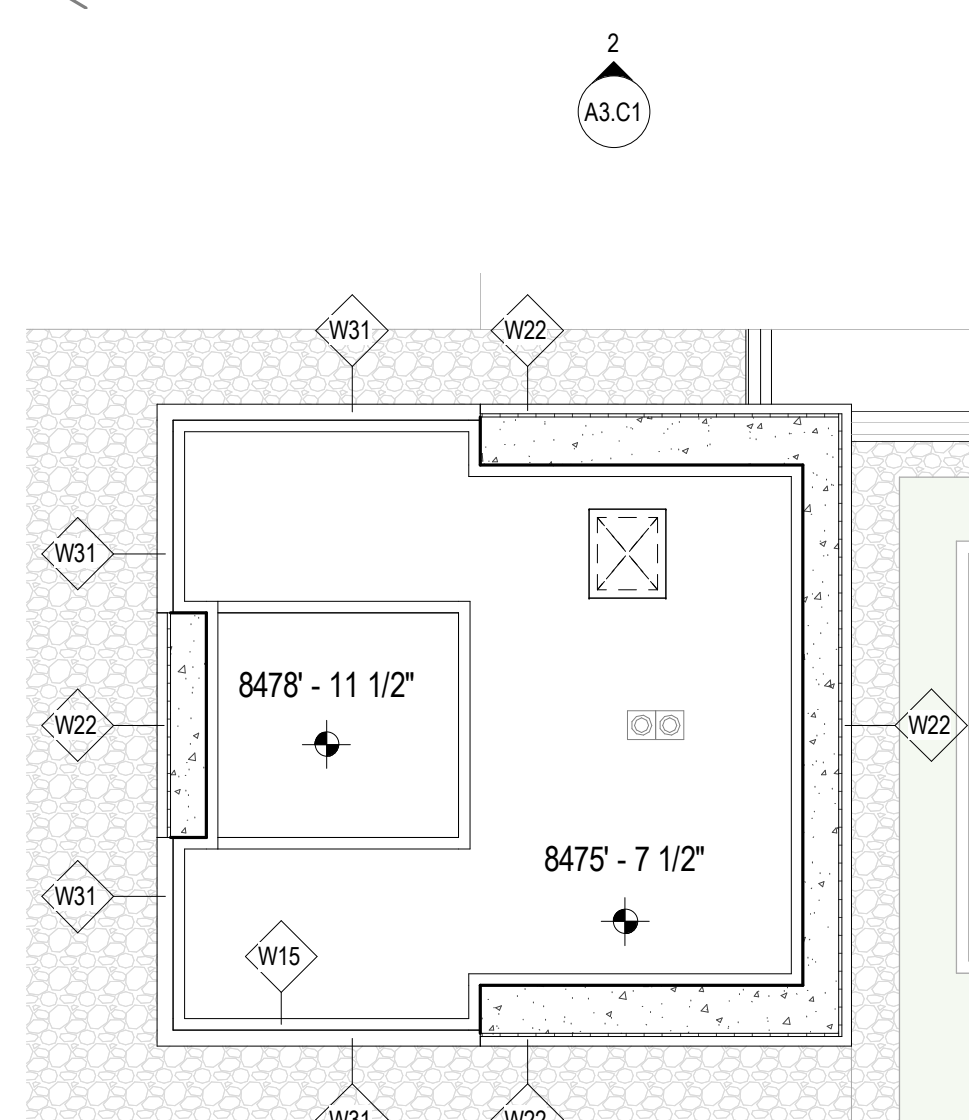
ISSUED FOR
CONSTRUCTION
11/18/2022

PLAN - TOWER C - ROOF

A2.2C.R



1 TOWER C - ROOF
SCALE: 1/8" = 1'-0"



2 TOWER C - ROOF - MECHANICAL PLENUM - UPPER
SCALE: 1/8" = 1'-0"

