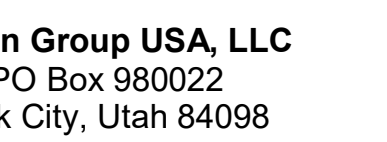


1. DIMENSIONS ARE TO FACE OF STUD OF EXTERIOR WALLS, CORRIDOR WALLS & INTERIOR WALLS, UNO
2. DIMENSIONS ARE TO CENTERLINE OF DEMISING WALLS, UNO.
3. ALL EXPOSED STRUCTURAL STEEL TO RECEIVE 1-HR INTUMESCENT PAINTING
4. AT FRAMED EXTERIOR WALLS, FRAMING OF REINFORCING 5/8" FROM FACE OF CONCRETE TO ALLOW FOR FLUSH ALIGNMENT OF SHEATHING TO EDGE OF SLAB UNO.
5. CASEWORK DIMENSIONS ARE TO FACE OF FINISH, UNO.
6. SEE SHEETS A0.10 AND A0.11 FOR ASSEMBLIES.
7. ALL CORRIDOR WALLS ARE TYPE B6, UNO.
8. ALL DEMISING WALLS ARE TYPE J6, UNO.
9. ALL INTERIOR PARTITIONS ARE TYPE A6, UNO.
10. ALL FURRING AROUND CONCRETE STRUCTURAL COLUMNS TYPE G1, UNO.
11. ALL VENT SHAFT WALLS ARE TYPE K4 UNO.
12. REFER TO LIFE SAFETY PLANS A0.30 - A0.34 FOR FULL EXTENT OF FIRE RATED WALLS.
13. UNIT PLAN LAYOUTS ON SHEETS A2.4A - A2.4R
14. ALL EXPOSED HSS COLUMNS TO BE PAINTED WITH 1-HR OF INTUMESCENT PAINT, UNO.
15. REFER TO SHEET A0.08 FOR ANSI TYPE 9 ACCESSIBILITY REQUIREMENTS.
16. REFER TO SHEET A0.07 FOR ANSI TYPE 4 ACCESSIBILITY REQUIREMENTS.
17. REFER TO SHEET A0.06 FOR ADA PUBLIC SPACE ACCESSIBILITY REQUIREMENTS

SOMMET BLANC
9300 MARSAC AVE
PARK CITY, UT 84060

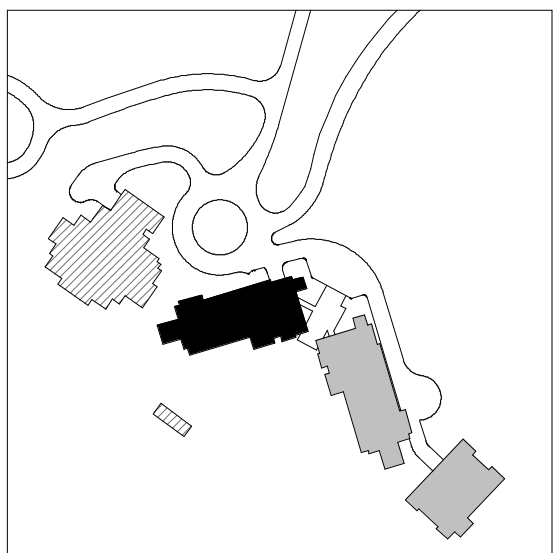


P USA
1 Fourth Ave., Suite 3100
Seattle, WA 98154

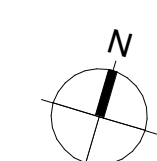
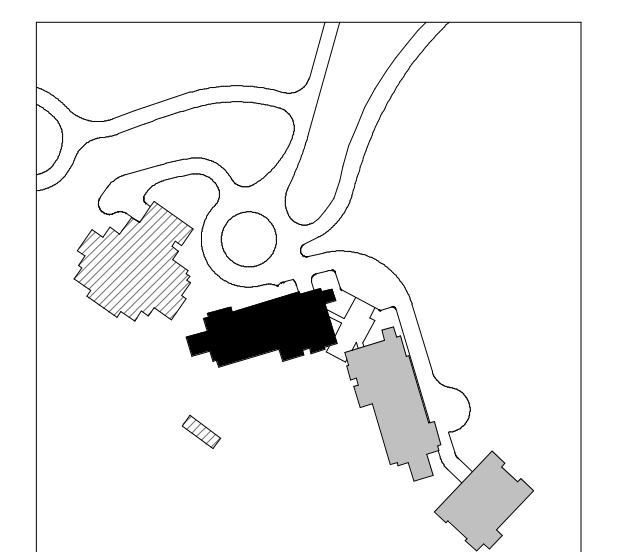
by

ISSUED FOR
CONSTRUCTION
1/18/2022

2.2A.01



1. DIMENSIONS ARE TO FACE OF STUD OF EXTERIOR WALLS, CORRIDOR WALLS & INTERIOR WALLS, UNO
2. DIMENSIONS ARE TO CENTERLINE OF DEMISING WALLS, UNO
3. ALL EXPOSED STRUCTURAL STEEL TO RECEIVE 1 HR INTUMESCENT PAINTING
4. AT FRAMED EXTERIOR WALLS, FRAMING TO BE SET BACK 5/8" FROM FACE OF CONCRETE TO ALLOW FOR FLUSH ALIGNMENT OF SHEATHING TO EDGE OF SLAB UNO
5. CASEWORK DIMENSIONS ARE TO FACE OF FINISH, UNO
6. SEE SHEETS A0.10 AND A0.11 FOR ASSEMBLIES.
7. ALL CORRIDOR WALLS ARE TYPE E8, UNO.
8. ALL DEMISING WALLS ARE TYPE A8, UNO
9. ALL INTERIOR PARTITIONS ARE TYPE A6, UNO
10. ALL FURRING ABOVE CONCRETE STRUCTURAL COLUMNS TYPE G1, UNO.
11. ALL VENT SHAFT WALLS ARE TYPE K4 UNO
12. REFER TO LIFE SAFETY PLANS A0.30 - A0.34 FOR FULL EXTENT OF FIRE RATED WALLS.
13. UNIT PLAN LAYOUTS ON SHEETS A2.4A - A2.4R
14. ALL EXPOSED HSS COLUMNS TO BE PAINTED WITH 1-HR OF INTUMESCENT PAINT, UNO.
15. REFER TO SHEET A0.08 FOR ANSI TYPE 1 ACCESSIBILITY REQUIREMENTS.
16. REFER TO SHEET A0.07 FOR ANSI TYPE 2 ACCESSIBILITY REQUIREMENTS.
17. REFER TO SHEET A0.06 FOR ADA PUBLIC SPACE ACCESSIBILITY REQUIREMENTS



Olson Kundig

9300 MARSAC AVE
PARK CITY, UT 84060



MEP Engineer
WSP USA
1001 Fourth Ave., Suite 3100
Seattle, WA 98154

revisions:

[illegible]

no.	date	by
-----	------	----

ISSUED FOR
CONSTRUCTION
11/18/2022

PLAN - TOWER A - LVL
2

A2.2A.02

1. DIMENSIONS ARE TO FACE OF STUD OF EXTERIOR WALLS, CORRIDOR WALLS & INTERIOR WALLS, UNO
2. DIMENSIONS ARE TO CENTERLINE OF DEMISING WALLS, UNO
3. ALL EXPOSED STRUCTURAL STEEL TO RECEIVE 1 HR INTUMESCENT PAINTING
4. AT FRAMED EXTERIOR WALLS, FRAMING TO BE SET BACK 5/8" FROM FACE OF CONCRETE TO ALLOW FOR FLUSH ALIGNMENT OF SHEATHING TO EDGE OF SLAB UNO
5. CASEWORK DIMENSIONS ARE TO FACE OF FINISH, UNO
6. SEE SHEETS A0.10 AND A0.11 FOR ASSEMBLIES.
7. ALL CORRIDOR WALLS ARE TYPE E8, UNO
8. ALL DEMISING WALLS ARE TYPE A8, UNO
9. ALL INTERIOR PARTITIONS ARE TYPE A6, UNO
10. ALL FURRING AROUND CONCRETE STRUCTURAL COLUMNS TYPE G1, UNO
11. ALL VENT SHAFT WALLS ARE TYPE K4, UNO
12. REFER TO LIFE SAFETY PLANS A0.30 - A0.34 FOR FULL EXTENT OF FIRE RATED WALLS.
13. UNIT PLAN LAYOUTS ON SHEETS A2.4A - A2.4R
14. ALL EXPOSED HSS COLUMNS TO BE PAINTED WITH 1-HR OF INTUMESCENT PAINT, UNO
15. REFER TO SHEET A0.08 FOR ANSI TYPE 1 ACCESSIBILITY REQUIREMENTS
16. REFER TO SHEET A0.07 FOR ANSI TYPE 2 ACCESSIBILITY REQUIREMENTS.
17. REFER TO SHEET A0.06 FOR ADA PUBLIC SPACE ACCESSIBILITY REQUIREMENTS

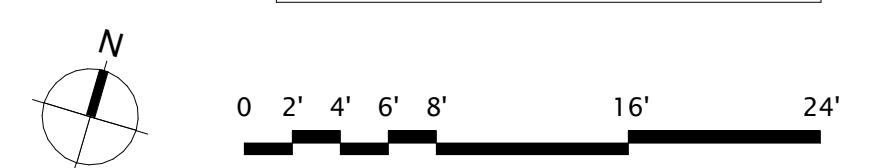
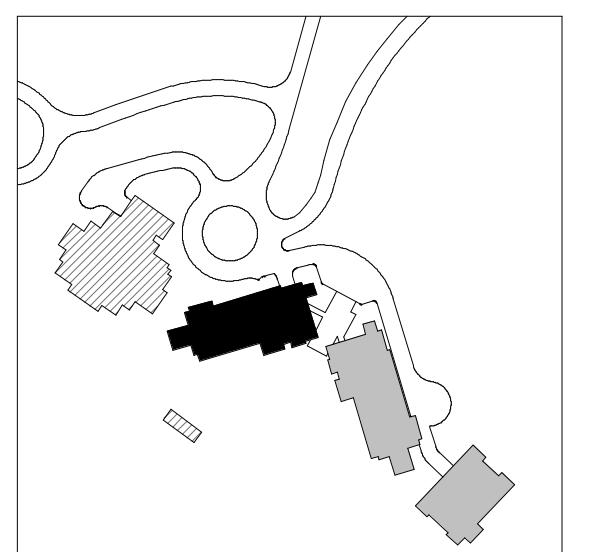
Olson Kundig

9300 MARSAC AVE
PARK CITY, UT 84060

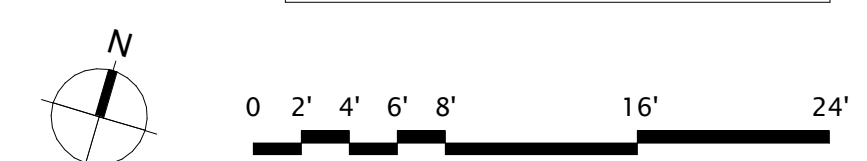
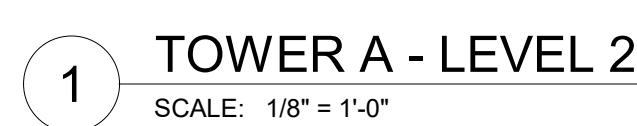


ISSUED FOR
CONSTRUCTION

A2.2A.11



1. DIMENSIONS ARE TO FACE OF STUD OF EXTERIOR WALLS, CORRIDOR WALLS & INTERIOR WALLS, UNO
2. DIMENSIONS ARE TO CENTERLINE OF DEMISING WALLS, UNO
3. ALL EXPOSED STRUCTURAL STEEL TO RECEIVE 1 HR INTUMESCENT PAINTING
4. AT FRAMED EXTERIOR WALLS, FRAMING TO BE SET BACK 5/8" FROM FACE OF CONCRETE TO ALLOW FOR FLUSH ALIGNMENT OF SHEATHING TO EDGE OF SLAB UNO
5. CASEWORK DIMENSIONS ARE TO FACE OF FINISH, UNO
6. SEE SHEETS A0.10 AND A0.11 FOR ASSEMBLIES.
7. ALL CORRIDOR WALLS ARE TYPE E8, UNO.
8. ALL DEMISING WALLS ARE TYPE A8, UNO
9. ALL INTERIOR PARTITIONS ARE TYPE A6, UNO
10. ALL FURRING ABOVE CONCRETE STRUCTURAL COLUMNS TYPE G1, UNO.
11. ALL VENT SHAFT WALLS ARE TYPE K4 UNO
12. REFER TO LIFE SAFETY PLANS A0.30 - A0.34 FOR FULL EXTENT OF FIRE RATED WALLS.
13. UNIT PLAN LAYOUTS ON SHEETS A2.4A - A2.4R
14. ALL EXPOSED HSS COLUMNS TO BE PAINTED WITH 1-HR OF INTUMESCENT PAINT, UNO.
15. REFER TO SHEET A0.08 FOR ANSI TYPE 1 ACCESSIBILITY REQUIREMENTS.
16. REFER TO SHEET A0.07 FOR ANSI TYPE 2 ACCESSIBILITY REQUIREMENTS.
17. REFER TO SHEET A0.06 FOR ADA PUBLIC SPACE ACCESSIBILITY REQUIREMENTS



9300 MARSAC AVE
PARK CITY, UT 84060



date _____ by _____

AN - TOWER A - LVL 2

A2.2A.12

1. DIMENSIONS ARE TO FACE OF STUD OF EXTERIOR WALLS, CORRIDOR WALLS & INTERIOR WALLS, UNO
2. DIMENSIONS ARE TO CENTERLINE OF DEMISING WALLS, UNO
3. ALL EXPOSED STRUCTURAL STEEL TO RECEIVE 1 HR INTUMESCENT PAINTING
4. AT FRAMED EXTERIOR WALLS, FRAMING TO BE SET BACK 5/8" FROM FACE OF CONCRETE TO ALLOW FOR FLUSH ALIGNMENT OF SHEATHING TO EDGE OF SLAB UNO
5. CASEWORK DIMENSIONS ARE TO FACE OF FINISH, UNO
6. SEE SHEETS A0.10 AND A0.11 FOR ASSEMBLIES.
7. ALL CORRIDOR WALLS ARE TYPE E6, UNO
8. ALL DEMISING WALLS ARE TYPE A6, UNO
9. ALL INTERIOR PARTITIONS ARE TYPE A6, UNO
10. ALL FURRING ABOVE CONCRETE STRUCTURAL COLUMNS TYPE G1, UNO
11. ALL VENT SHAFT WALLS ARE TYPE K4, UNO
12. REFER TO LIFE SAFETY PLANS A0.30 - A0.34 FOR FULL EXTENT OF FIRE RATED WALLS.
13. UNIT PLAN LAYOUTS ON SHEETS A2.4A - A2.4R
14. ALL EXPOSED HSS COLUMNS TO BE PAINTED WITH 1-HR OF INTUMESCENT PAINT, UNO
15. REFER TO SHEET A0.08 FOR ANSI TYPE 1 ACCESSIBILITY REQUIREMENTS.
16. REFER TO SHEET A0.07 FOR ANSI TYPE 2 ACCESSIBILITY REQUIREMENTS.
17. REFER TO SHEET A0.06 FOR ADA PUBLIC SPACE ACCESSIBILITY REQUIREMENTS

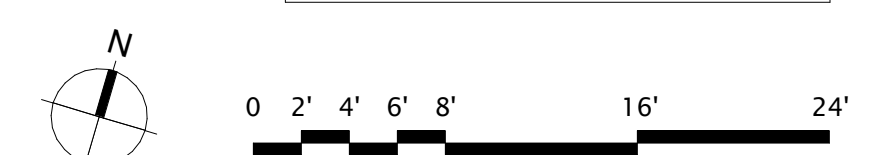
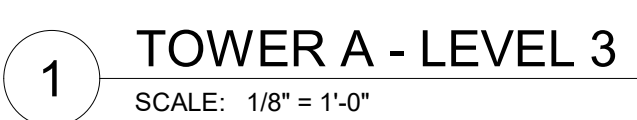
Olson Kundig

9300 MARSAC AVE
PARK CITY, UT 84060



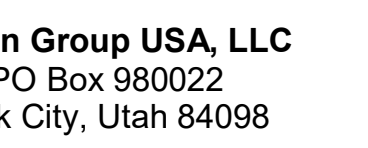
11/10/2022

A2.2A.13



1. DIMENSIONS ARE TO FACE OF STUD OF EXTERIOR WALLS, CORRIDOR WALLS & INTERIOR WALLS, UNO
2. DIMENSIONS ARE TO CENTERLINE OF DEMISING WALLS, UNO.
3. ALL EXPOSED STRUCTURAL STEEL TO RECEIVE 1-HR INTUMESCENT PAINTING
4. AT FRAMED EXTERIOR WALLS, FRAMING OF STEEL TO BE 5/8" FROM FACE OF CONCRETE TO ALLOW FOR FLUSH ALIGNMENT OF SHEATHING TO EDGE OF SLAB UNO.
5. CASEWORK DIMENSIONS ARE TO FACE OF FINISH, UNO.
6. SEE SHEETS A0.10 AND A0.11 FOR ASSEMBLIES.
7. ALL CORRIDOR WALLS ARE TYPE B6, UNO.
8. ALL DEMISING WALLS ARE TYPE J6, UNO.
9. ALL INTERIOR PARTITIONS ARE TYPE A6, UNO.
10. ALL FURRING AROUND CONCRETE STRUCTURAL COLUMNS TYPE G1, UNO.
11. ALL VENT SHAFT WALLS ARE TYPE K4 UNO.
12. REFER TO LIFE SAFETY PLANS A0.30 - A0.34 FOR FULL EXTENT OF FIRE RATED WALLS.
13. UNIT PLAN LAYOUTS ON SHEETS A2.4A - A2.4R
14. ALL EXPOSED HSS COLUMNS TO BE PAINTED WITH 1-HR OF INTUMESCENT PAINT, UNO.
15. REFER TO SHEET A0.08 FOR ANSI TYPE 9 ACCESSIBILITY REQUIREMENTS.
16. REFER TO SHEET A0.07 FOR ANSI TYPE 4 ACCESSIBILITY REQUIREMENTS.
17. REFER TO SHEET A0.06 FOR ADA PUBLIC SPACE ACCESSIBILITY REQUIREMENTS

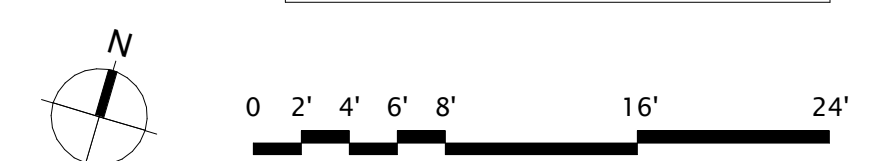
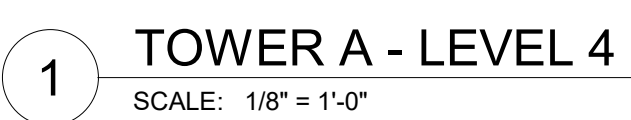
SOMMET BLANC
9300 MARSAC AVE
PARK CITY, UT 84060



TV XM

ISSUED FOR
CONSTRUCTION

2.2A.14



PLAN GENERAL NOTES

1. DIMENSIONS ARE TO FACE OF STUD OF EXTERIOR WALLS, CORRIDOR WALLS & INTERIOR WALLS, UNO.
2. DIMENSIONS ARE TO CENTERLINE OF DEMISING WALLS, UNO.
3. ALL EXPOSED STRUCTURAL STEEL TO RECEIVE 1 HR INTUMESCENT PAINTING
4. AT FRAMED EXTERIOR WALLS, FRAMING TO BE SET BACK 5/8" FROM FACE OF CONCRETE TO ALLOW FOR FLUSH ALIGNMENT OF SHEATHING TO EDGE OF SLAB UNO.
5. CASEWORK DIMENSIONS ARE TO FACE OF FINISH, UNO.
6. SEE SHEETS A0.10 AND A0.11 FOR ASSEMBLIES.
7. ALL CORRIDOR WALLS ARE TYPE E6, UNO.
8. ALL DEMISING WALLS ARE TYPE J6, UNO.
9. ALL INTERIOR PARTITIONS ARE TYPE A6, UNO.
10. ALL FURRING AROUND CONCRETE STRUCTURAL COLUMNS TYPE G1, UNO.
11. ALL VENT SHAFT WALLS ARE TYPE K4, UNO.
12. REFER TO LIFE SAFETY PLANS A0.30 - A0.34 FOR FULL EXTENT OF FIRE RATED WALLS.
13. UNIT PLAN LAYOUTS ON SHEETS A2.4A - A2.4R
14. ALL EXPOSED HSS COLUMNS TO BE PAINTED WITH 1-HR OF INTUMESCENT PAINT, UNO.
15. REFER TO SHEET A0.08 FOR ANSI TYPE B ACCESSIBILITY REQUIREMENTS.
16. REFER TO SHEET A0.07 FOR ANSI TYPE A ACCESSIBILITY REQUIREMENTS.
17. REFER TO SHEET A0.06 FOR ADA PUBLIC SPACE ACCESSIBILITY REQUIREMENTS

109 South Jackson St. Suite 600
Seattle, Washington 98104 USA
+1 206 458 9800
olsonkundig.com

Olson Kundig

SOMMET BLANC
9300 MARSA CAVE
PARK CITY, UT 84060



Aspen Group USA, LLC
PO Box 980022
Park City, Utah 84098

Pool Consultant
Cloward H2O
2696 N University Ave., Suite 290
Provo, UT 84604

Landscape Architect
EPG Design
6940 South High Tech Drive, Suite 100
Midvale, Utah 84047

Specifications Writer
Friday Group
85 Mainell Road
Middlebury, VT

Code Consultant
Holmes
600 1st Avenue, Suite 200A
Seattle, WA 98104

Fire Protection Engineer
Jensen Hughes
One Research Drive, Suite 305C
Westborough, MA 01581

Vertical Transportation Consultant
Larch Bates
1615 North Creek Parkway, Suite 304
Bothell, WA 98011

Structural Engineer
Magnusson Klemencic Associates
1301 5th Ave., Suite 3200
Seattle, WA 98101

Lighting Designer
O
319 SE MLK Blvd., Suite 210
Portland, Oregon 97219

Building Envelope Consultant
RDH
2101 N 34th St
Seattle, WA 98103

Accessibility Consultant
Studio Pacifica
2144 Westlake Ave N, Suite F
Seattle, WA 98109

MEP Engineer
WSP USA
1001 Fourth Ave., Suite 3100
Seattle, WA 98154

principal architect TK, KM
project manager TM, JB, LS, MD
drawn by SK, SS, JR, CP, AL
NH, EK, BD, EB

checked by JB
job no. 2052
date 11/18/2022

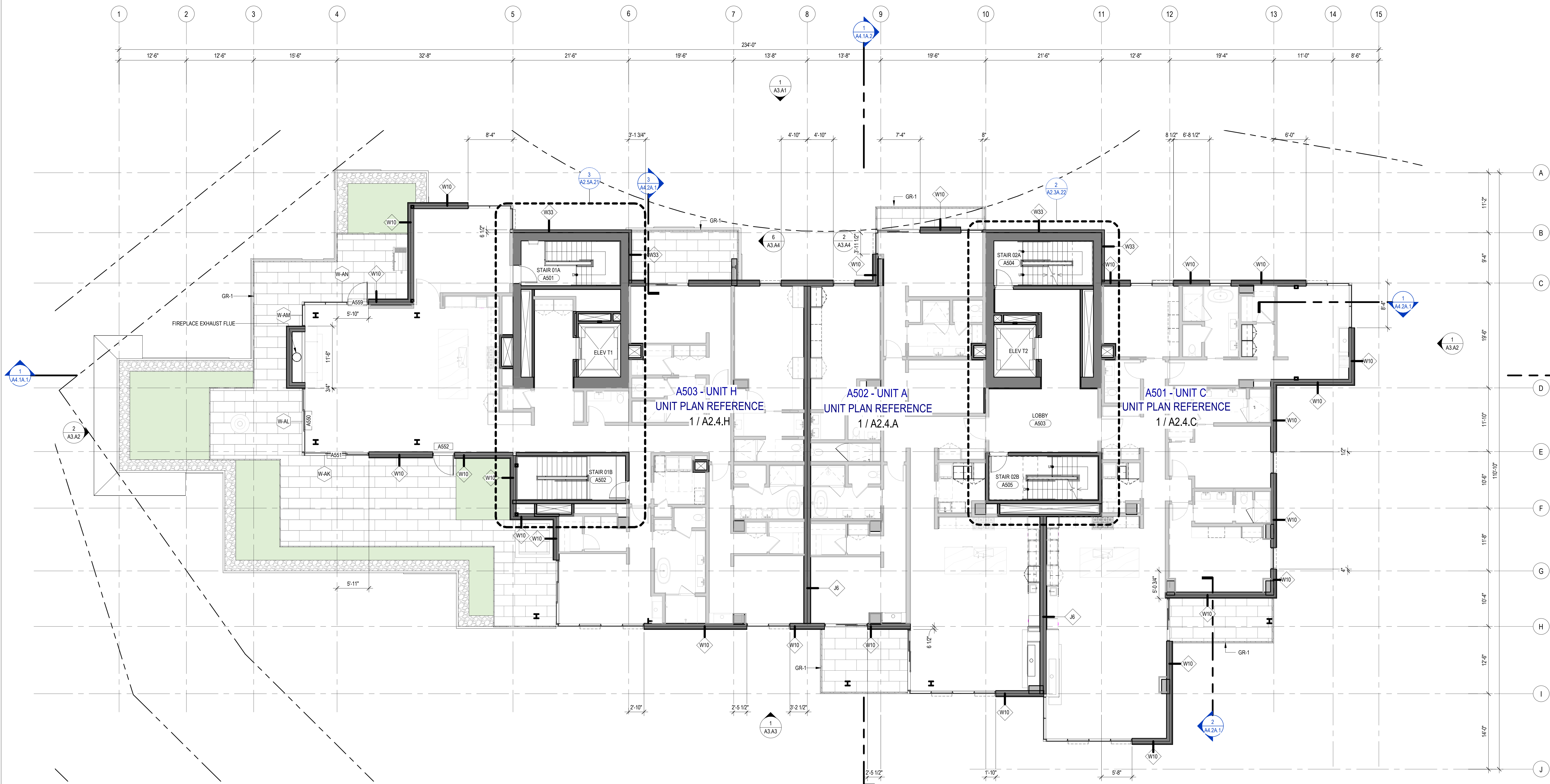
revisions:

no. date by

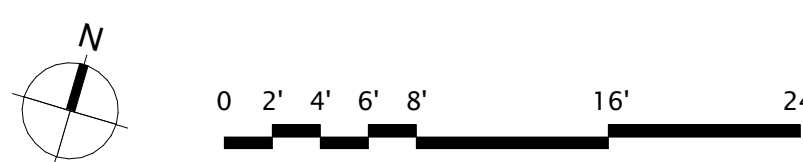
ISSUED FOR
CONSTRUCTION
11/18/2022

PLAN - TOWER A - LVL 5

A2.2A.15



1 TOWER A - LEVEL 5
SCALE: 1/8" = 1'-0"



PLAN GENERAL NOTES

1. DIMENSIONS ARE TO FACE OF STUD OF EXTERIOR WALLS, CORRIDOR WALLS & INTERIOR WALLS, UNO.
2. DIMENSIONS ARE TO CENTERLINE OF DEMISING WALLS, UNO.
3. ALL EXPOSED STRUCTURAL STEEL TO RECEIVE 1 HR INTUMESCENT PAINTING
4. AT FRAMED EXTERIOR WALLS, FRAMING TO BE SET BACK 5/8" FROM FACE OF CONCRETE TO ALLOW FOR FLUSH ALIGNMENT OF SHEATHING TO EDGE OF SLAB UNO.
5. CASEWORK DIMENSIONS ARE TO FACE OF FINISH, UNO.
6. SEE SHEETS A0.10 AND A0.11 FOR ASSEMBLIES.
7. ALL CORRIDOR WALLS ARE TYPE E6, UNO.
8. ALL DEMISING WALLS ARE TYPE J6, UNO.
9. ALL INTERIOR PARTITIONS ARE TYPE A6, UNO.
10. ALL FURRING AROUND CONCRETE STRUCTURAL COLUMNS TYPE G1, UNO.
11. ALL VENT SHAFT WALLS ARE TYPE K4 UNO.
12. REFER TO LIFE SAFETY PLANS A0.30 - A0.34 FOR FULL EXTENT OF FIRE RATED WALLS.
13. UNIT PLAN LAYOUTS ON SHEETS A2.4A - A2.4R
14. ALL EXPOSED HSS COLUMNS TO BE PAINTED WITH 1-HR OF INTUMESCENT PAINT, UNO.
15. REFER TO SHEET A0.08 FOR ANSI TYPE B ACCESSIBILITY REQUIREMENTS.
16. REFER TO SHEET A0.07 FOR ANSI TYPE A ACCESSIBILITY REQUIREMENTS.
17. REFER TO SHEET A0.06 FOR ADA PUBLIC SPACE ACCESSIBILITY REQUIREMENTS

109 South Jackson St. Suite 600
Seattle, Washington 98104 USA
+1 206 454 9810
olsonkundig.com

Olson Kundig

SOMMET BLANC
9300 MARSAC AVE
PARK CITY, UT 84060



Aspen Group USA, LLC
PO Box 980022
Park City, Utah 84098

Pool Consultant
Cloward H2O
2696 N University Ave., Suite 290
Provo, UT 84604

Landscape Architect
EPG Design
6040 South High Tech Drive, Suite 100
Midvale, Utah 84047

Specifications Writer
Friday Group
88 Mainell Road
Middlebury, VT

Code Consultant
Holmes
600 1st Avenue, Suite 200A
Seattle, WA 98104

Fire Protection Engineer
Jensen Hughes
One Research Drive, Suite 305C
Westborough, MA 01581

Vertical Transportation Consultant
Larch Bates
1915 North Creek Parkway, Suite 304
Bothell, WA 98011

Structural Engineer
Magnusson Klemencic Associates
1301 5th Ave, Suite 3200
Seattle, WA 98101

Lighting Designer
O
1319 SE MLK Blvd, Suite 210
Portland, Oregon 97219

Building Envelope Consultant
RDH
2101 N 34th St
Seattle, WA 98103

Accessibility Consultant
Studio Pacifica
2144 Westlake Ave N, Suite F
Seattle, WA 98109

MEP Engineer
WSP USA
1001 Fourth Ave., Suite 3100
Seattle, WA 98154

principal architect TK, KM
project manager TM, JB, LB, MD
drawn by SK, SS, JR, CP, AL
NH, EK, BD, ER

checked by JB
job no. 2052
date 11/18/2022

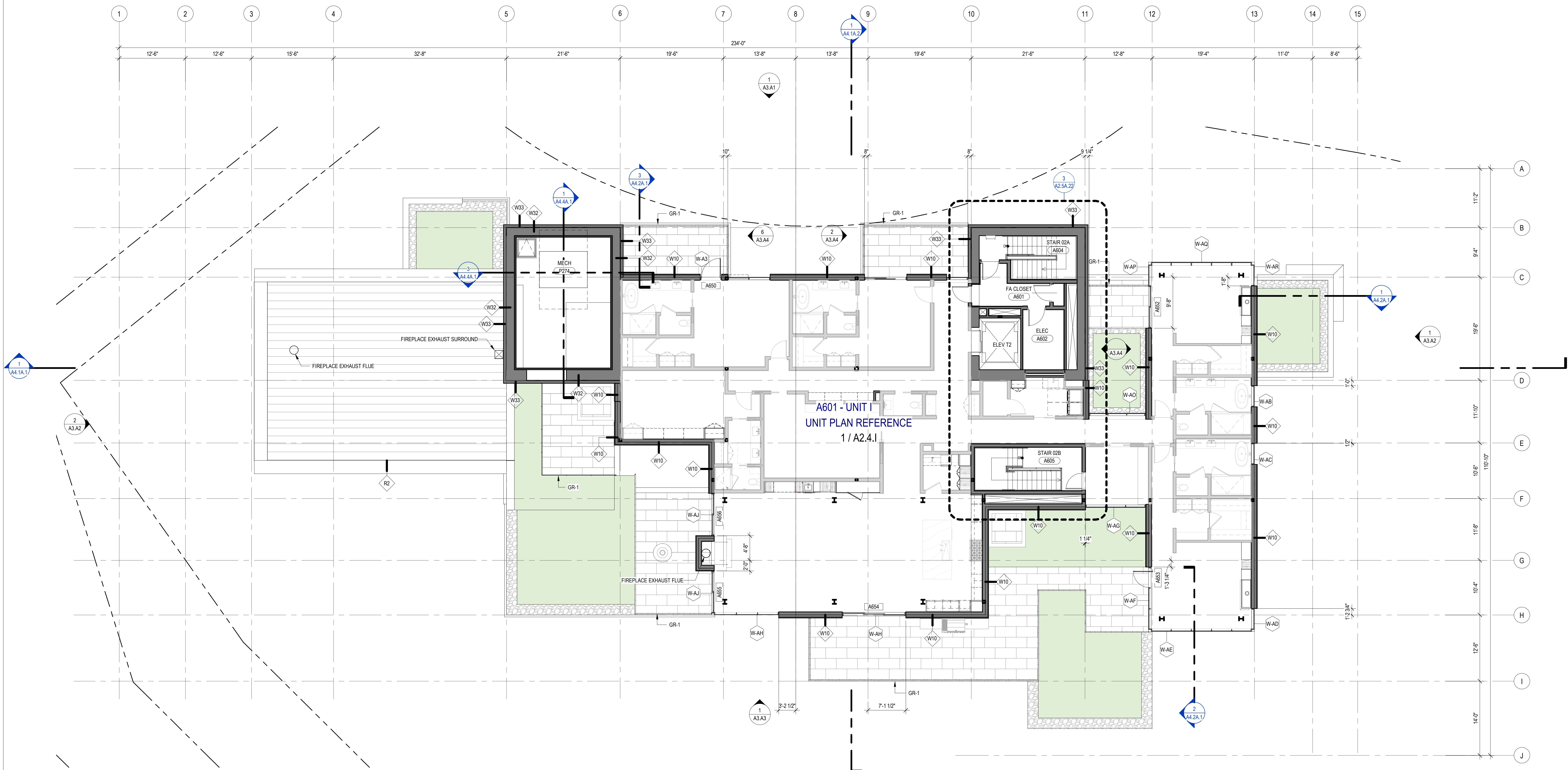
revisions:	
no.	date by

ISSUED FOR
CONSTRUCTION

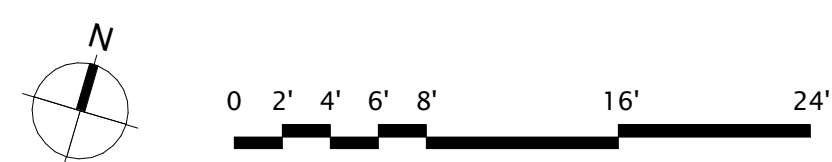
11/18/2022

PLAN - TOWER A - LVL 6

A2.2A.16



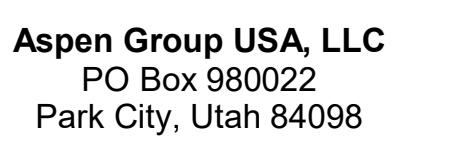
1 TOWER A - LEVEL 6
SCALE: 1/8" = 1'-0"



1. DIMENSIONS ARE TO FACE OF STUD OF EXTERIOR WALLS, CORRIDOR WALLS & INTERIOR WALLS, UNO
2. DIMENSIONS ARE TO CENTERLINE OF DEMISING WALLS, UNO
3. ALL EXPOSED STRUCTURAL STEEL TO RECEIVE 1 HR INTUMESCENT PAINTING
4. AT FRAMED EXTERIOR WALLS, FRAMING TO BE SET BACK 5/8" FROM FACE OF CONCRETE TO ALLOW FOR FLUSH ALIGNMENT OF SHEATHING TO EDGE OF SLAB UNO
5. CASEWORK DIMENSIONS ARE TO FACE OF FINISH, UNO
6. SEE SHEETS A0.10 AND A0.11 FOR ASSEMBLIES.
7. ALL CORRIDOR WALLS ARE TYPE E8, UNO.
8. ALL DEMISING WALLS ARE TYPE A8, UNO
9. ALL INTERIOR PARTITIONS ARE TYPE A6, UNO
10. ALL FURRING AROUND CONCRETE STRUCTURAL COLUMNS TYPE G1, UNO.
11. ALL VENT SHAFT WALLS ARE TYPE K4 UNO
12. REFER TO LIFE SAFETY PLANS A0.30 - A0.34 FOR FULL EXTENT OF FIRE RATED WALLS.
13. UNIT PLAN LAYOUTS ON SHEETS A2.4A - A2.4R
14. ALL EXPOSED HSS COLUMNS TO BE PAINTED WITH 1-HR OF INTUMESCENT PAINT, UNO.
15. REFER TO SHEET A0.08 FOR ANSI TYPE 1 ACCESSIBILITY REQUIREMENTS.
16. REFER TO SHEET A0.07 FOR ANSI TYPE 2 ACCESSIBILITY REQUIREMENTS.
17. REFER TO SHEET A0.06 FOR ADA PUBLIC SPACE ACCESSIBILITY REQUIREMENTS

Olson Kundig

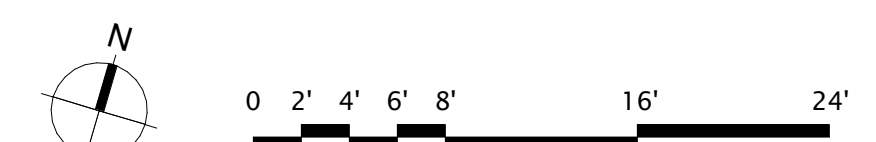
9300 MARSAC AVE
PARK CITY, UT 84060



P USA
1 Fourth Ave., Suite 3100
Seattle, WA 98154

ISSUED FOR
CONSTRUCTION

A2.2A.R

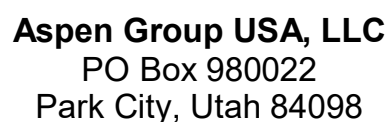


1 TOWER A - ROOF
SCALE: 1/8" = 1'-0"

1. DIMENSIONS ARE TO FACE OF STUD OF EXTERIOR WALLS, CORRIDOR WALLS & INTERIOR WALLS. UNO
2. DIMENSIONS ARE TO CENTERLINE OF DEMISING WALLS. UNO
3. ALL EXPOSED STRUCTURAL STEEL TO RECEIVE 1 HR INTUMESCENT PAINTING
4. ALL FRAMED EXTERIOR WALLS TO BE SET BACK 505 FROM FACE OF CONCRETE TO ALLOW FOR FLUSH ALIGNMENT OF SHEATHING TO EDGE OF SLAB UNO
5. CASEWORK DIMENSIONS ARE TO FACE OF FINISH. UNO
6. SEE SHEETS A0.10 AND A0.11 FOR ASSEMBLIES.
7. ALL CORRIDOR WALLS ARE TYPE E6. UNO
8. ALL DEMISING WALLS ARE TYPE J6. UNO
9. ALL INTERIOR PARTITIONS ARE TYPE A6. UNO
10. ALL FURRING ABOVE CONCRETE STRUCTURAL COLUMNS TYPE G1. UNO
11. ALL VENT SHIRT WALLS ARE TYPE H4. UNO
12. REFER TO LIFE SAFETY PLAN A0.30, A0.31, A0.34 FOR FULL EXENT OF FIRE RATED WALLS.
13. UNIT PLAN LAYOUTS ON SHEETS A2.4A - A2.4R
14. ALL EXPOSED HSS COLUMNS TO BE PAINTED WITH 1-HR OF INTUMESCENT PAINT. UNO
15. REFER TO SHEET A0.08 FOR ANSI TYPE A ACCESSIBILITY REQUIREMENTS.
16. REFER TO SHEET A0.07 FOR ANSI TYPE B ACCESSIBILITY REQUIREMENTS.
17. REFER TO SHEET A0.06 FOR ADA PUBLIC SPACE ACCESSIBILITY REQUIREMENTS

Olson Kundig

SOMMET BLANC
9300 MARSAC AVE
PARK CITY, UT 84060



WSP USA
1001 Fourth Ave., Suite 3100
Seattle, WA 98154

no. date

by

ISSUED FOR
CONSTRUCTION
11/18/2022

PLAN - LOBBY

A2.2AB.11

