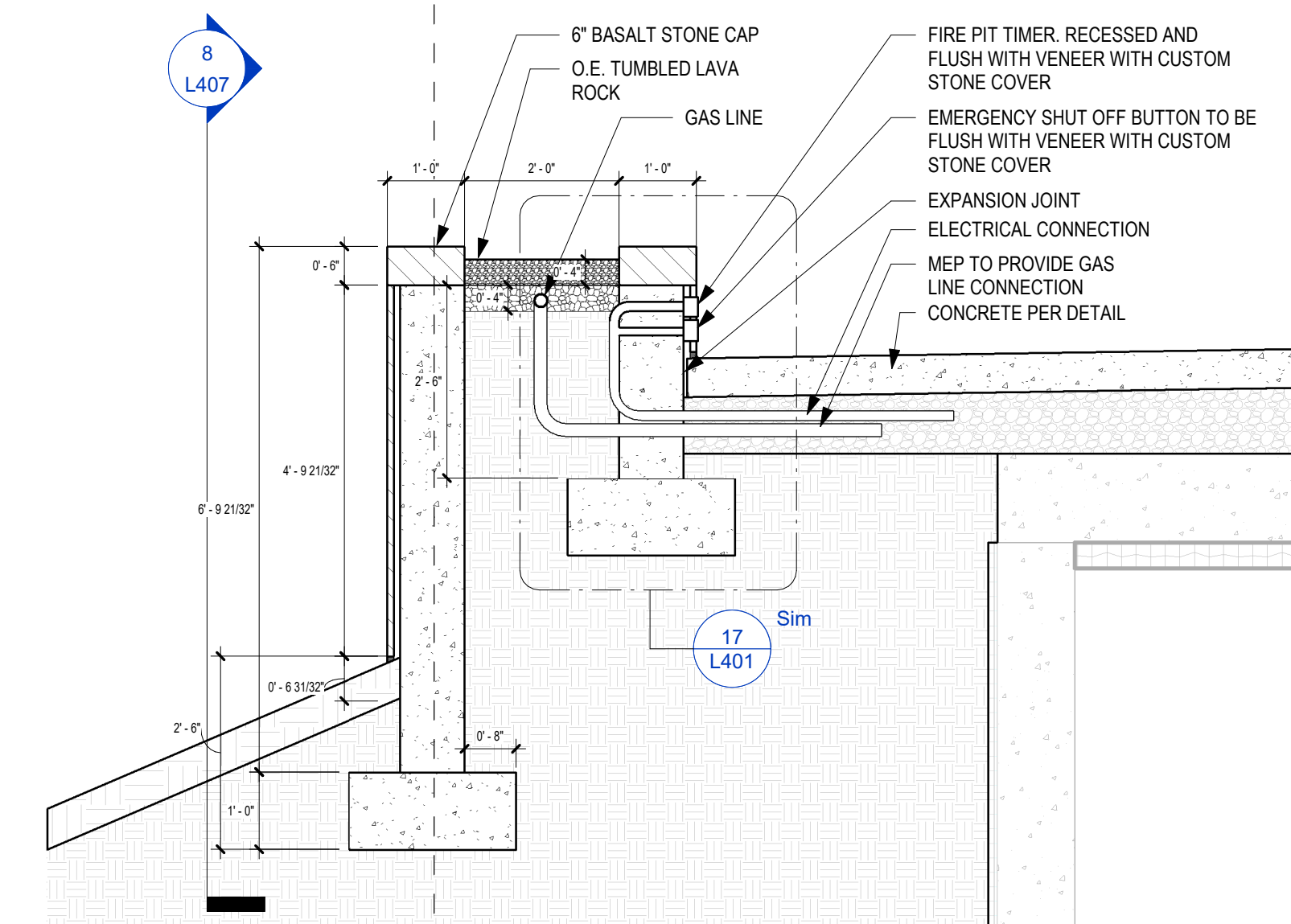


- STONE WALL NOTES:
1. PROVIDE 15X SAMPLE FOR OWNER & LA APPROVAL
  2. ANY ADJUSTMENTS TO BE APPROVED BY LANDSCAPE ARCHITECT
  3. CUT TO SIZE TO GROUTING JOINT O.C. ADJUST STONE CUT DIMENSION TO ACCOUNT FOR GROUT SPACING
  4. BUTT JOINTS WITH CONCRETE SIDEWALK AND CONCRETE CURBS. STONE COVER SHOULD BE REMOVABLE FOR EASY ACCESS TRENCH DRAIN CLEANING
  5. GRANITE:
    - A. SOURCE FROM DELTA STONE
    - BUSH-HAMMER FINISH FOR WINTER TRACTION
  6. Delta Stone Products, Inc.  
2278 S. Daniels Road  
Heber City, UT 84032  
jesse@delastoneproducts.com  
Office: 435.554.3336  
www.delastoneproducts.com
  7. SHOP DRAWINGS TO BE PROVIDED BY DELTA STONE WITH INVENTORY OF ORDER TO BE APPROVED BY LA

- FIRE FEATURE NOTES:
1. ANY ADJUSTMENTS TO BE APPROVED BY LANDSCAPE ARCHITECT
  2. PROVIDE ELECTRICAL AND GAS CONNECTIONS TO EACH LOCATION
  3. 1/2" PVC DRAIN PIPE CONNECT TO GRAVEL PIT FOR ANY WATER ACCUMULATION
  4. Outdoor Elements, Inc.  
6068 S REDWOOD ROAD  
SALT LAKE CITY UT 84122  
Thomas Durland  
thomas@outdoorelementsdesign.com  
Office: 801.688.5372  
http://outdoorelementsdesign.com/fire-elements
  5. O.E. TO PROVIDE SHOP DRAWINGS OF CUSTOM FINISHES, CONNECTIONS, AND MECHANISMS LA TO APPROVE.



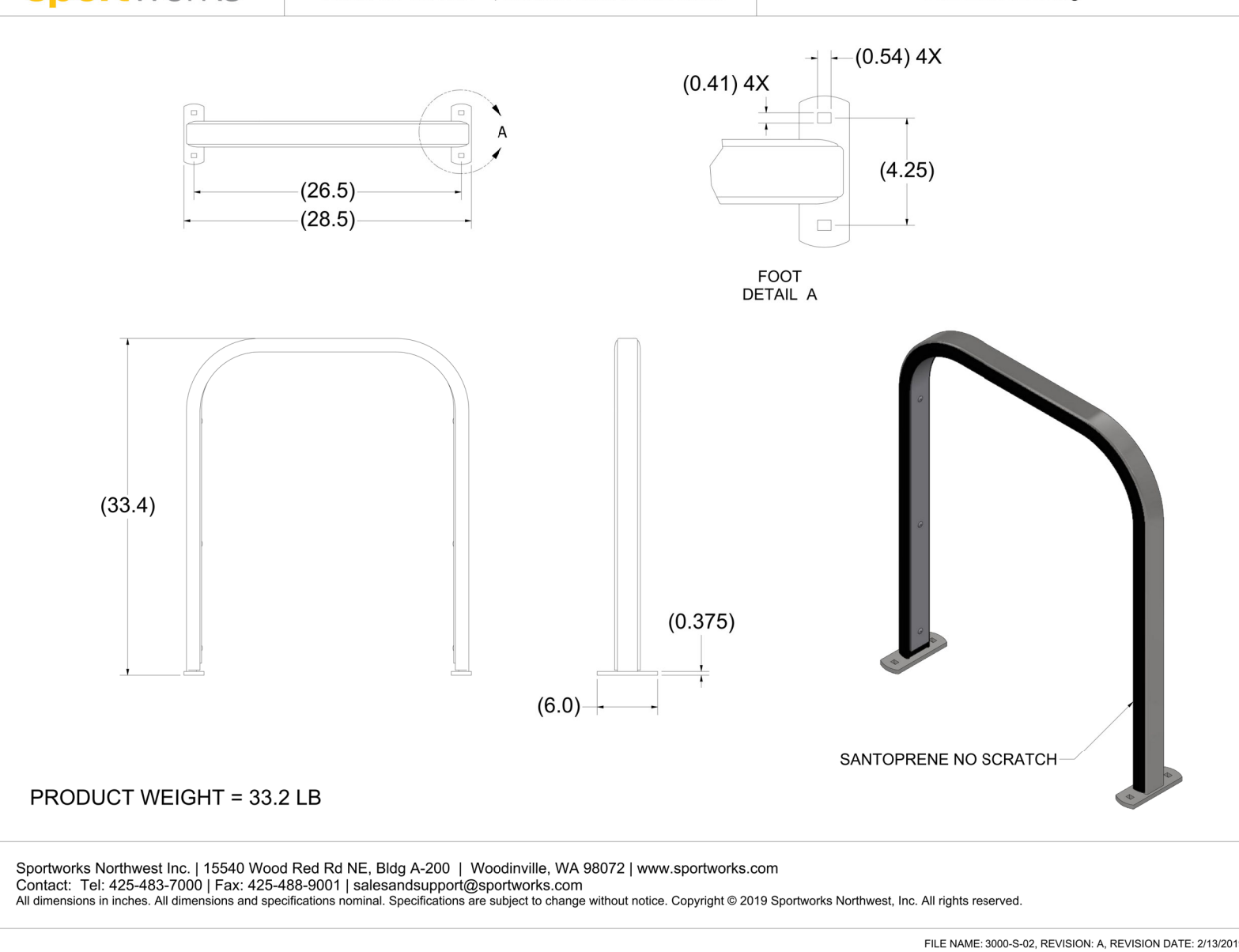
2 FIRE FEATURE SECTION  
1/2" = 1'-0"

- NOTES:
1. ANY ADJUSTMENTS TO BE APPROVED BY LANDSCAPE ARCHITECT
  2. PROVIDE ELECTRICAL AND GAS CONNECTIONS TO EACH LOCATION
  3. 1/2" PVC DRAIN PIPE CONNECT TO GRAVEL PIT FOR ANY WATER ACCUMULATION
  4. Outdoor Elements, Inc.  
6068 S REDWOOD ROAD  
SALT LAKE CITY UT 84122  
Thomas Durland  
thomas@outdoorelementsdesign.com  
Office: 801.688.5372  
http://outdoorelementsdesign.com/fire-elements
  5. PYREX FIRE FEATURE BY OUTDOOR ELEMENTS  
98" x 38" x 15"  
100.000 BTU  
Powder Coated Aluminum  
Tumbled Lava Stone  
Electronic Ignition  
NO Quartz Countertop

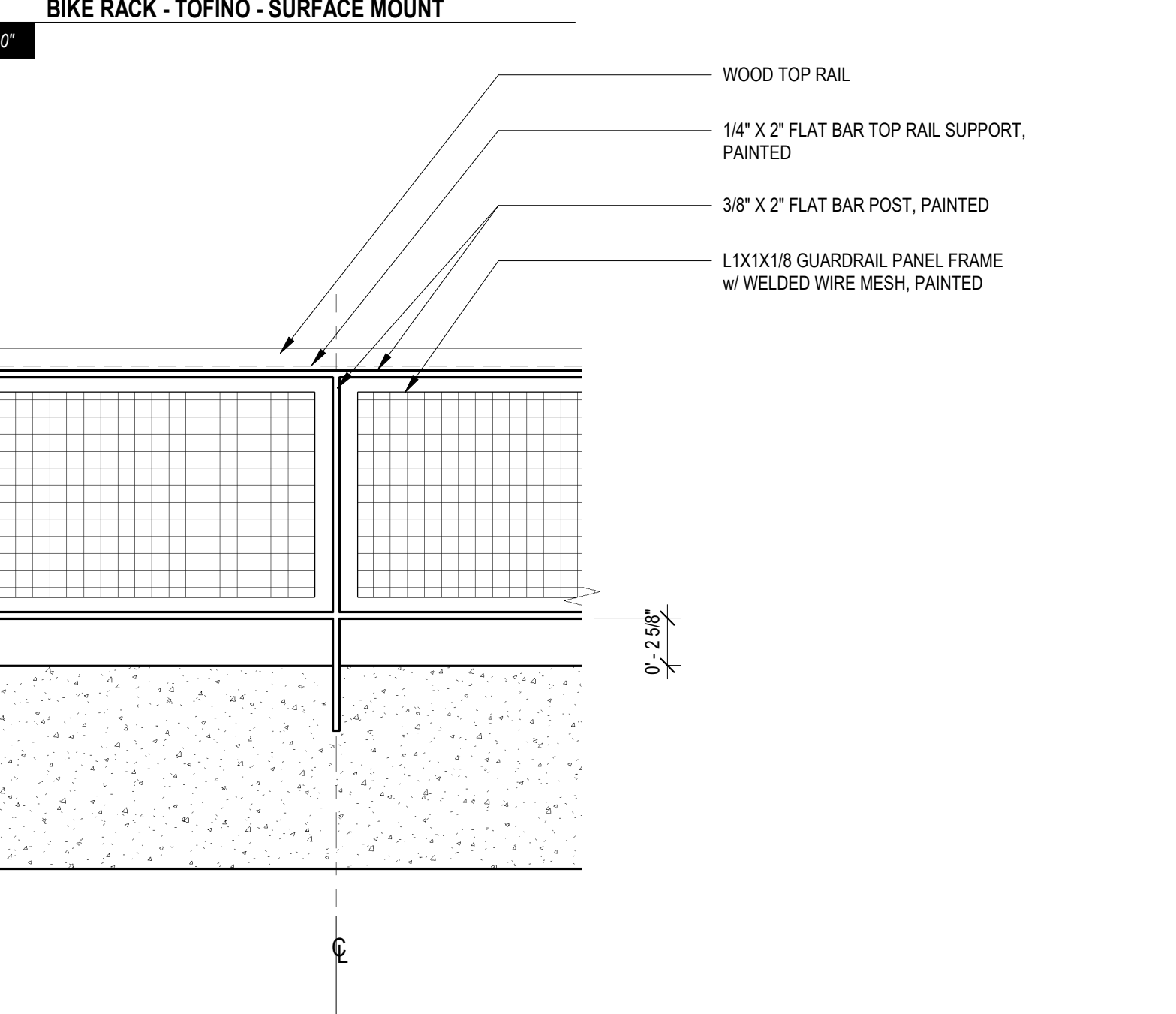
4 OUTDOOR ELEMENTS FIRE PIT  
3/4" = 1'-0"



sportworks Torino No Scratch™, Surface Mount Bike Rack

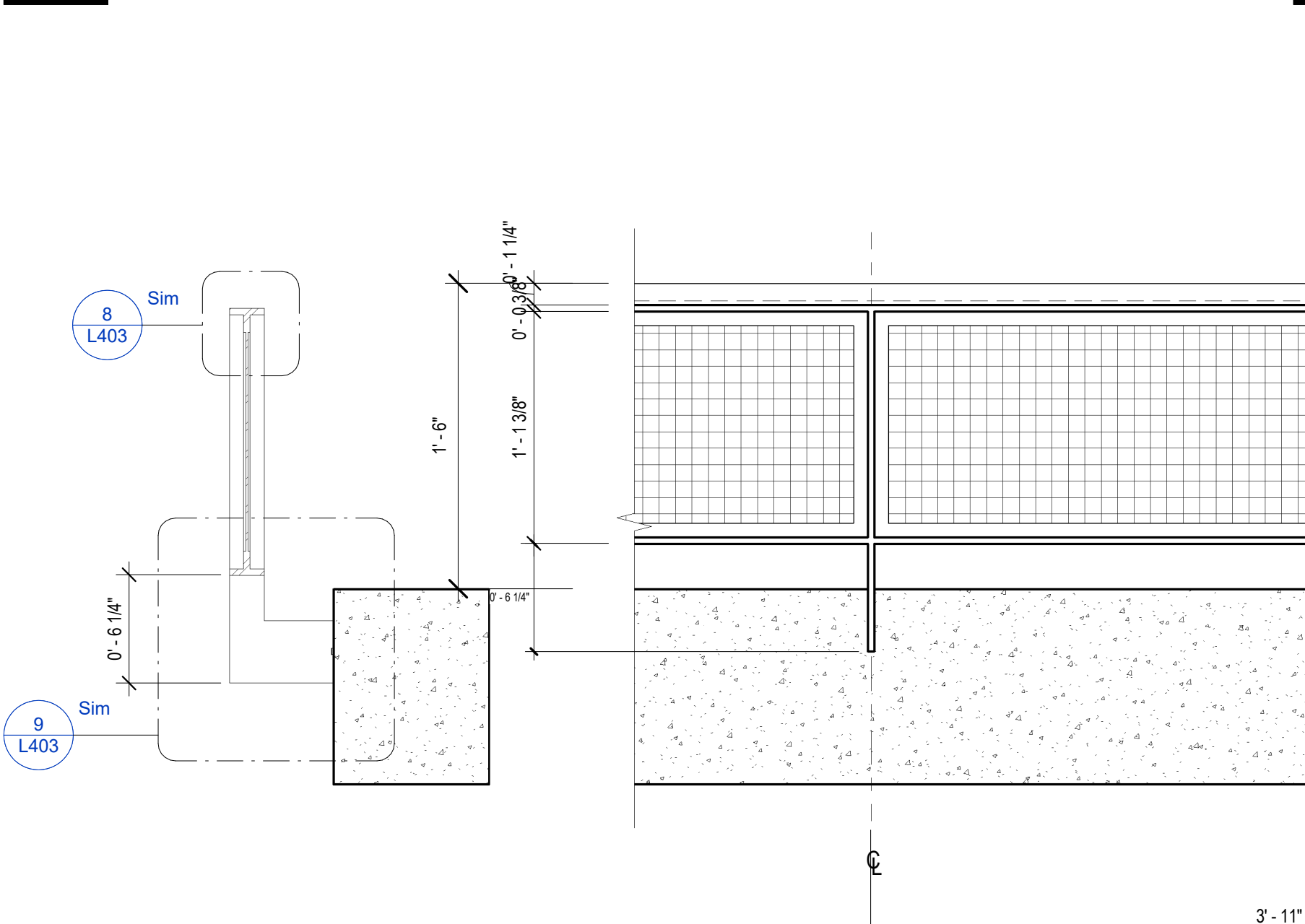


7 BIKE RACK - TORINO - SURFACE MOUNT  
1" = 1'-0"



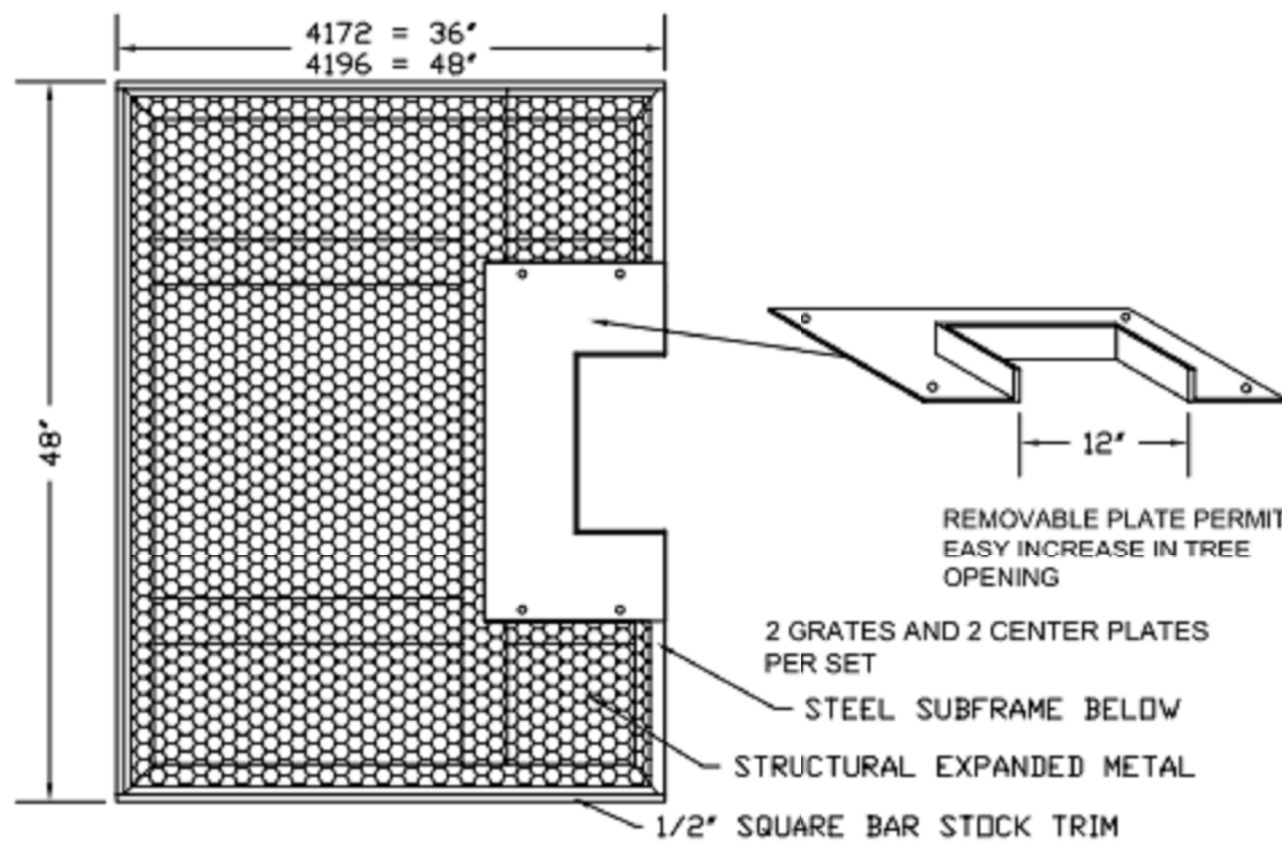
- NOTES:
1. PROVIDE 6" SAMPLE FOR OWNER & LA APPROVAL
  2. ANY ADJUSTMENTS TO BE APPROVED BY LANDSCAPE ARCHITECT
  3. CUT TO SIZE TO JOINT O.C. ADJUST STONE CUT DIMENSION TO ACCOUNT FOR GROUT SPACING
  4. BUTT JOINTS WITH CONCRETE SIDEWALK AND CONCRETE CURBS. STONE COVER SHOULD BE REMOVABLE FOR EASY ACCESS TRENCH DRAIN CLEANING
  5. GRANITE:
    - A. SOURCE FROM DELTA STONE
    - COLORSPRING GRANITE - SIERRA WHITE
    - BUSH-HAMMER FINISH FOR WINTER TRACTION
  6. Delta Stone Products, Inc.  
2278 S. Daniels Road  
Heber City, UT 84032  
jesse@delastoneproducts.com  
Office: 435.554.3336  
www.delastoneproducts.com
  7. SHOP DRAWINGS TO BE PROVIDED BY COLDSPRING GRANITE OR DELTA STONE WITH INVENTORY OF ORDER TO BE APPROVED BY LA. DRAWINGS SHOULD SUPPORT GRANITE DRAIN COVER AND ATTACHMENT.

6 GRANITE DRAIN  
3/4" = 1'-0"



8 GUARDRAIL - Kukio - Posts - Flat - Spaced - 18"  
1 1/2" = 1'-0"

## PAVER-GRATE Rectangular

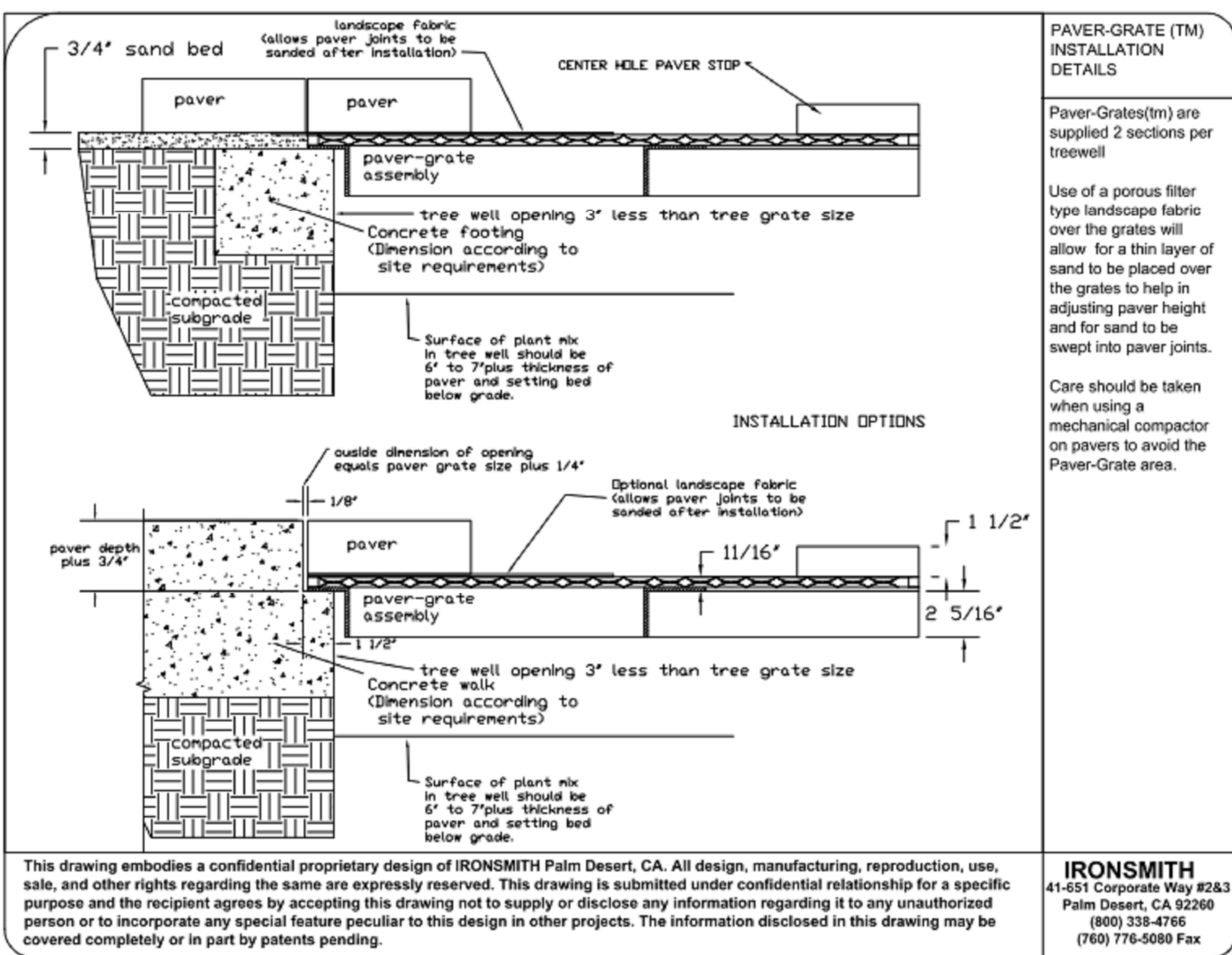


U.S. PATENT #5,787,637

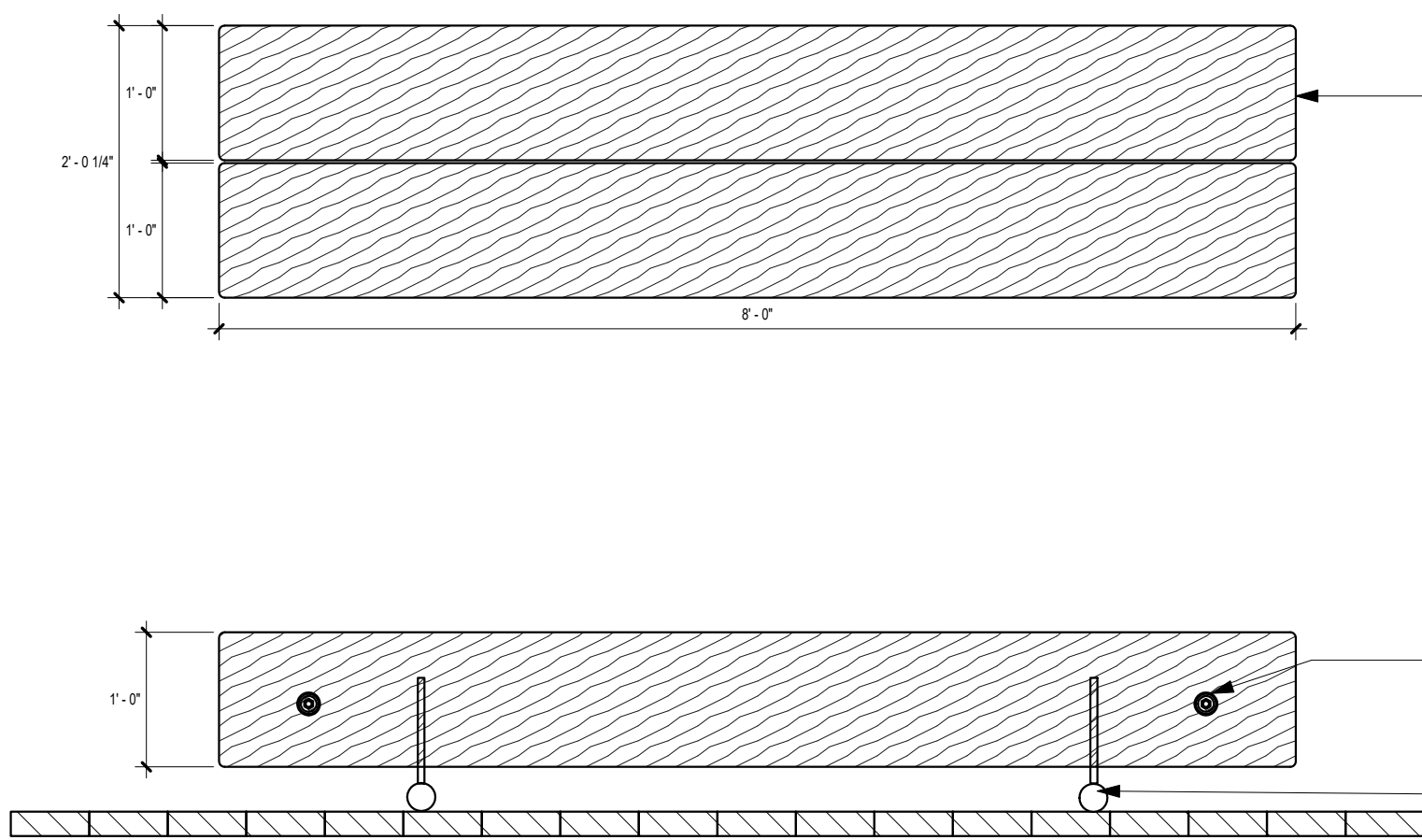
GRATE MODEL NO.	SIZE (INCHES)	TREE OPENING	TREE WELL SIZE	WEIGHT
4160	48" x 96" O.D.	12" x 20"	44" x 56"	170
4172	48" x 72" O.D.	12" x 20"	44" x 68"	200
4196	48" x 96" O.D.	12" x 20"	44" x 92"	250

- PAVER-GRATE TREE GRATE IS DESIGNED TO SUPPORT PAVERS ABOVE THE TREE WELL
- SUBFRAME IS FULLY WELDED FROM STEEL ANGLE
- GRATING IS NUMBER 3 EXPANDED STEEL STRUCTURAL GRATING
- STANDARD OPENINGS ARE AS SHOWN. OTHER OPENINGS CAN BE SPECIFIED
- GRATES ARE DESIGNED FOR HEAVY PEDESTRIAN TRAFFIC
- STANDARD FINISH ZINC METALIZED
- PRODUCED UNDER EXCLUSIVE LICENCE U.S. PATENT # 5,787,637

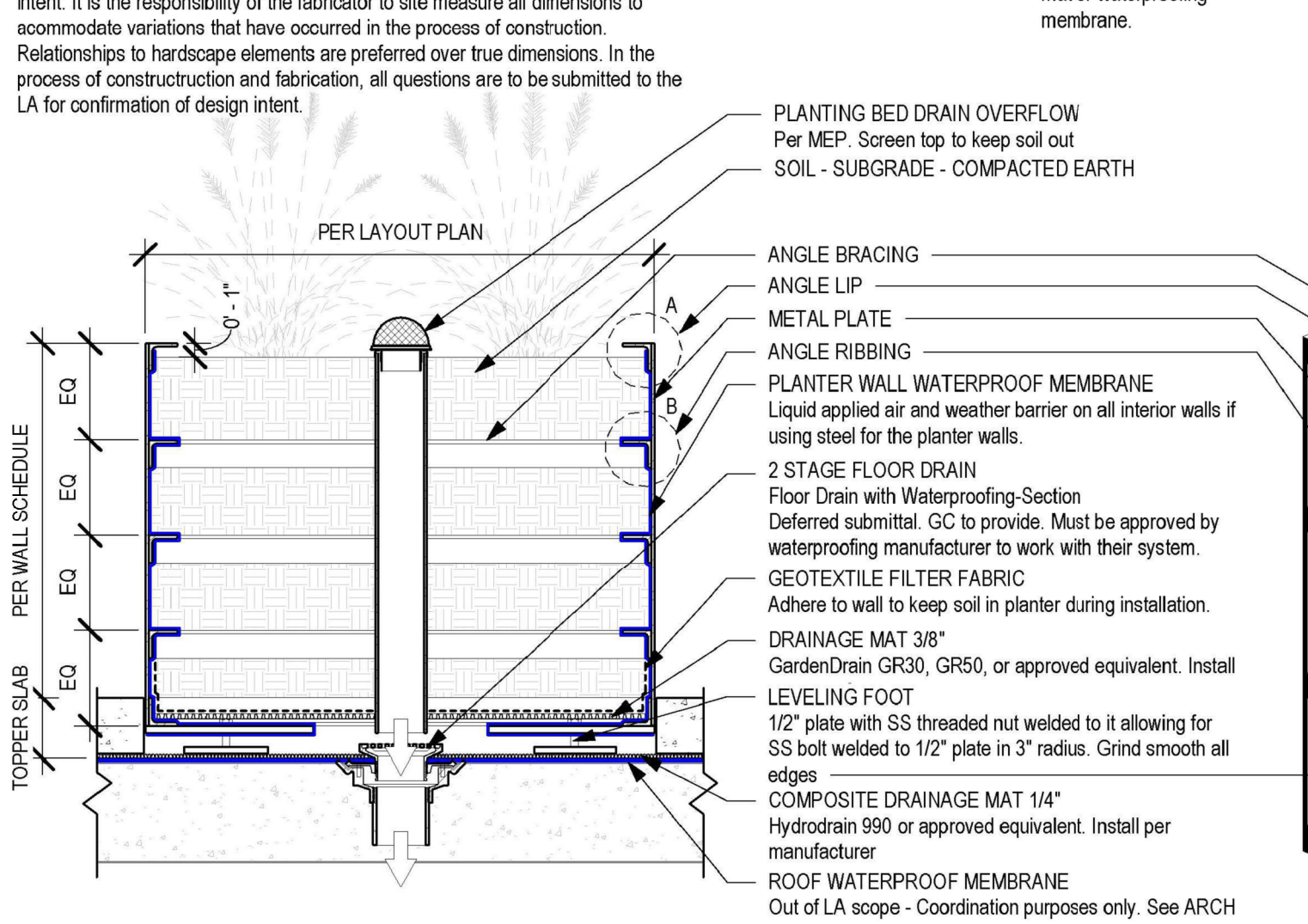
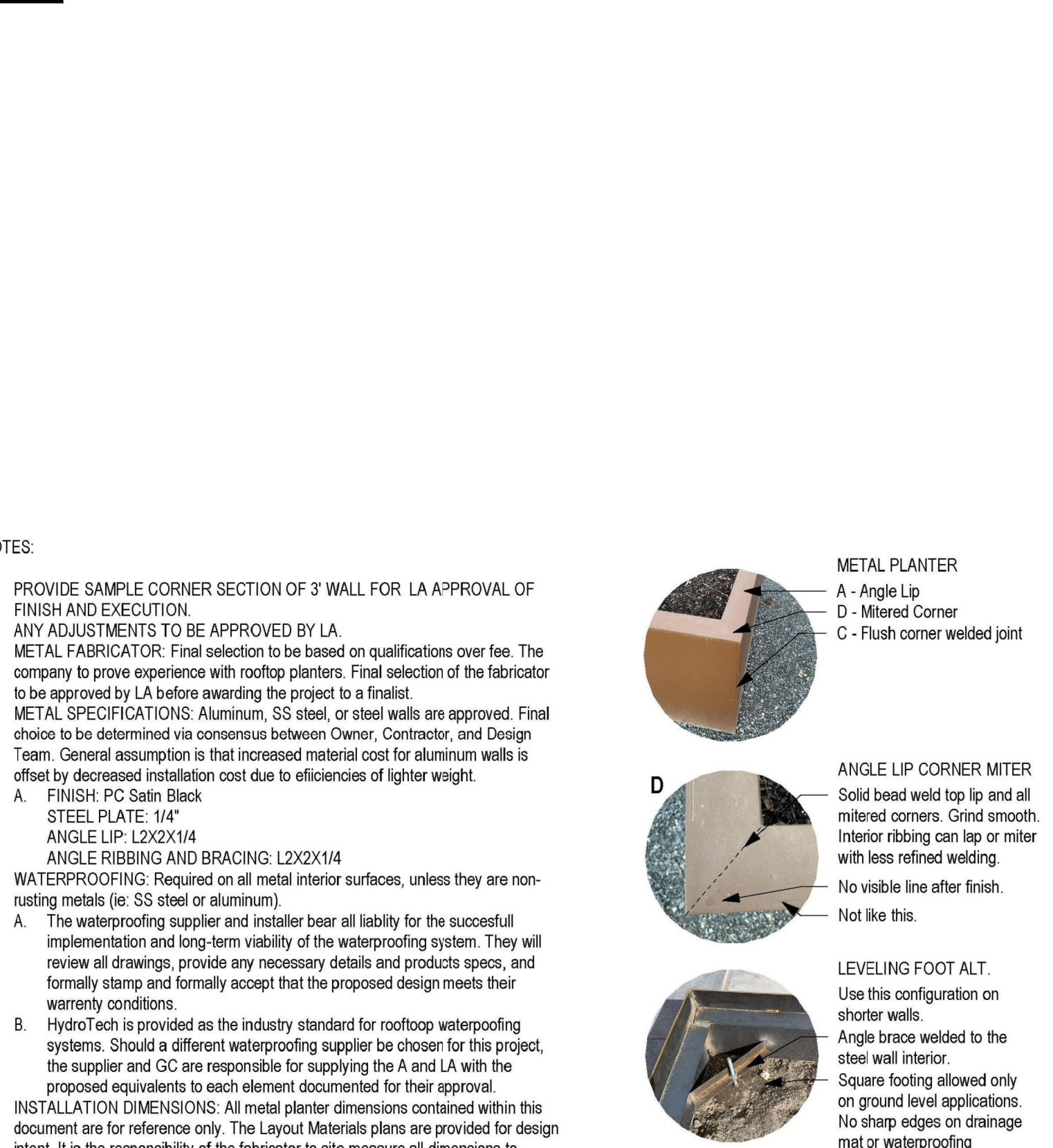
IRONSMITH TREE GRATES  
FOR LANDSCAPE ARCHITECTURE (800) 338-4766



IRONSMITH  
4145 Corporate Way #282  
Palm Desert, CA 92266  
(800) 338-4766  
(760) 776-5088 Fax



5 WOOD BENCH  
3/4" = 1'-0"



9 WALL - METAL PLANTER ON STRUCTURE  
1/2" = 1'-0"

## KEYNOTES

Keynote	Detail	SP
1A/C/S	Coated Stone with Agi Base	41,401
1A/C/S	Mosaic Pavers with Agi Base	41,401
1A/C/S	Concrete 4" Base with Agi Base	41,401
1A/C/S	Concrete 4" Base with Agi Base	41,401
1A/C/S	Concrete 4" Base with Agi Base	41,401
1A/C/S	Concrete 4" Base with Agi Base	41,401
1A/C/S	Concrete 4" Base with Agi Base	41,401
1A/C/S	Concrete 4" Base with Agi Base	41,401
1A/C/S	Concrete 4" Base with Agi Base	41,401
1A/C/S	Concrete 4" Base with Agi Base	41,401

## 02 JOINTS

Keynote	Detail	LF
---------	--------	----

## 03 SITE STAIRS

Keynote	Detail	SP
3178S-BA	Beast Tracks on CP Base - 1/2" x 1/2"	13,401
3178S-C	Concrete Base - 4" x 12" - Acid Wash Natural Gray with Concrete with	15,401
3178S-GR	Grass Tracks on Concrete Base - 1/2" x 1/2"	13,401

## 04 SITE WALLS

Keynote	Detail	YSP / FF
AC01	1" Concrete Wall Boardform	19,401
AC01H12	12" Concrete Wall Boardform	19,401
AC01H12	12" Concrete Wall Boardform	19,401
AC01H12	12" Concrete Wall Boardform	19,401
AC01H12	12" Concrete Wall Boardform	19,401
AC01H12	12" Concrete Wall Boardform	19,401
AC01H12	12" Concrete Wall Boardform	19,401
AC01H12	12" Concrete Wall Boardform	19,401
AC01H12	12" Concrete Wall Boardform	19,401
AC01H12	12" Concrete Wall Boardform	19,401

\*\*\*SEE PLAN FOR ISOMETRIC AND SECTION VIEWS OF WALLS THEIR ELEVATION RELATIONSHIPS

## 05 SITE AMENITIES

Keynote	Detail	Count
SNKE	Surface Mount Mini Steel	70,402
SNKLEDER	Steel Ladder	19,401
SFF	Steel Footing	3,402
SFF	Steel Footing	3,402
SFF	Steel Footing	3,402
SFF	Steel Footing	3,402
SFF	Steel Footing	3,402
SFF	Steel Footing	3,402
SFF	Steel Footing	3,402
SFF	Steel Footing	3,402
SFF	Steel Footing	3,402

## 06 SITE RAILINGS AND FENCES

Keynote	Detail	LF
EG01H	Kukio - Flat - Spaced - 18"	65,402
EG01H	Kukio - Flat - Spaced - 18"	65,402
EG01H	Kukio - Flat - Spaced - 18"	65,402
EG01H	Kukio - Flat - Spaced - 18"	65,402
EG01H	Kukio - Flat - Spaced - 18"	65,402
EG01H	Kukio - Flat - Spaced - 18"	65,402
EG01H	Kukio - Flat - Spaced - 18"	65,402
EG01H	Kukio - Flat - Spaced - 18"	65,402
EG01H	Kukio - Flat - Spaced - 18"	65,402
EG01H	Kukio - Flat - Spaced - 18"	65,402

\*\*\*SITE PLANS TO MATCH IN WITH THE CDA DETAIL FOR THE ABOVE-WALLS GUARDRAIL. ADJUST DESIGN TO MEET THE SPECIFIED VARIATIONS OF SCHEDULED WEIGHT REQUIREMENTS

## 07 SITE LIGHTING

Keynote	Detail	Count
---------	--------	-------

## 08 SITE DRAINAGE

Keynote	Detail	Count
---------	--------	-------

## 09 PLANTING AREAS

Keynote	Detail	SP
---------	--------	----

## 10 MISCELLANEOUS ELEMENTS

Keynote	Detail	Count
---------	--------	-------



Reserved for permit stamp

139 South Jordan Blvd., Suite 400  
Salt Lake City, UT 84143  
www.olsonkundig.com

project: SOMMET BLANC RESIDENCE 1  
ADDRESS: PARK CITY, UT

White Summit Development, LLC  
PO Box 980022  
Park City, Utah 84098

Acoustic Consultant  
BRC Acoustics  
1932 1st Ave, Suite 620  
Seattle, WA 98101

Pool Consultant  
Cloward H2O  
2696 N University Ave, Suite 290  
Provo, UT 84604

Landscape Architect  
EPG Design  
6949 South High Tech Drive, Suite 100  
Midvale, Utah 84047

Specifications Writer  
Fridley Group  
85 Mainelli Road  
Middlebury, VT

Code Consultant  
Holmes  
600 1st Avenue, Suite 200A  
Seattle, WA 98104

Fire Protection Engineer  
Janet Hughes  
One Research Drive, Suite 305C  
Westborough, MA 01581

Vertical Transportation Consultant  
Larch Bates  
1915 N North Creek Parkway, Suite 304  
Bohemia, VA 98011

Structural Engineer  
Magnuson Mechanical Associates  
1301 5th Ave, Suite 3200  
Seattle, WA 98101

Lighting Designer  
O  
1319 SE MLK Blvd, Suite 210  
Portland, Oregon 97219

Building Envelope Consultant  
RDH  
2101 N 34th St  
Seattle, WA 98103

Accessibility Consultant  
Studio Pacifica  
2144 Westlake Ave N, Suite F  
Seattle, WA 98109

MEP Engineer  
WSP USA  
1001 Fourth Ave., Suite 3100  
Seattle, WA 98154

principal architect—David Hertz—  
project manager—Grant Hardy—  
drawn by—Grant Hardy—

checked by—Chadler—  
job no. 2052  
date May 23, 2022

revisions:

no. date by

CONSTRUCTION DOCUMENTS 95%

May 23, 2022

DISCLAIMER:  
THE DESIGN SHOWN AND DESCRIBED HEREIN INCLUDING ALL TECHNICAL DRAWINGS, GRAPHIC  
REPRESENTATIONS, AND MODELS THEREOF ARE PROPRIETARY AND CAN NOT BE COPIED,  
REPRODUCED, OR OTHERWISE USED IN WHOLE OR IN PART WITHOUT THE SOLE AND  
EXPRESS WRITTEN PERMISSION FROM ENVIRONMENTAL PLANNING GROUP (EPG).

ENVIRONMENTAL PLANNING GROUP (EPG) PROVIDED QUANTITIES ARE CALCULATED  
BASED ON THE 10% MODEL PROGRESS. CONTRACTORS ARE RESPONSIBLE FOR REVIEWING THE  
DESIGN AND PROVIDING THEIR OWN CALCULATIONS AND AREAS FOR THE PURPOSES OF COST  
ESTIMATING. FIGURES, ALL QUANTITIES AND COST ASSUMPTIONS TO BE REVIEWED WITH AND  
APPROVED BY THE LANDSCAPE ARCHITECT

THE CLIENT AND/OR THE CLIENT'S CONTRACTOR IS RESPONSIBLE FOR OBTAINING OR  
PROVIDING THE NECESSARY CONSTRUCTION PERMIT FOR CITY CODE COMPLIANCE.

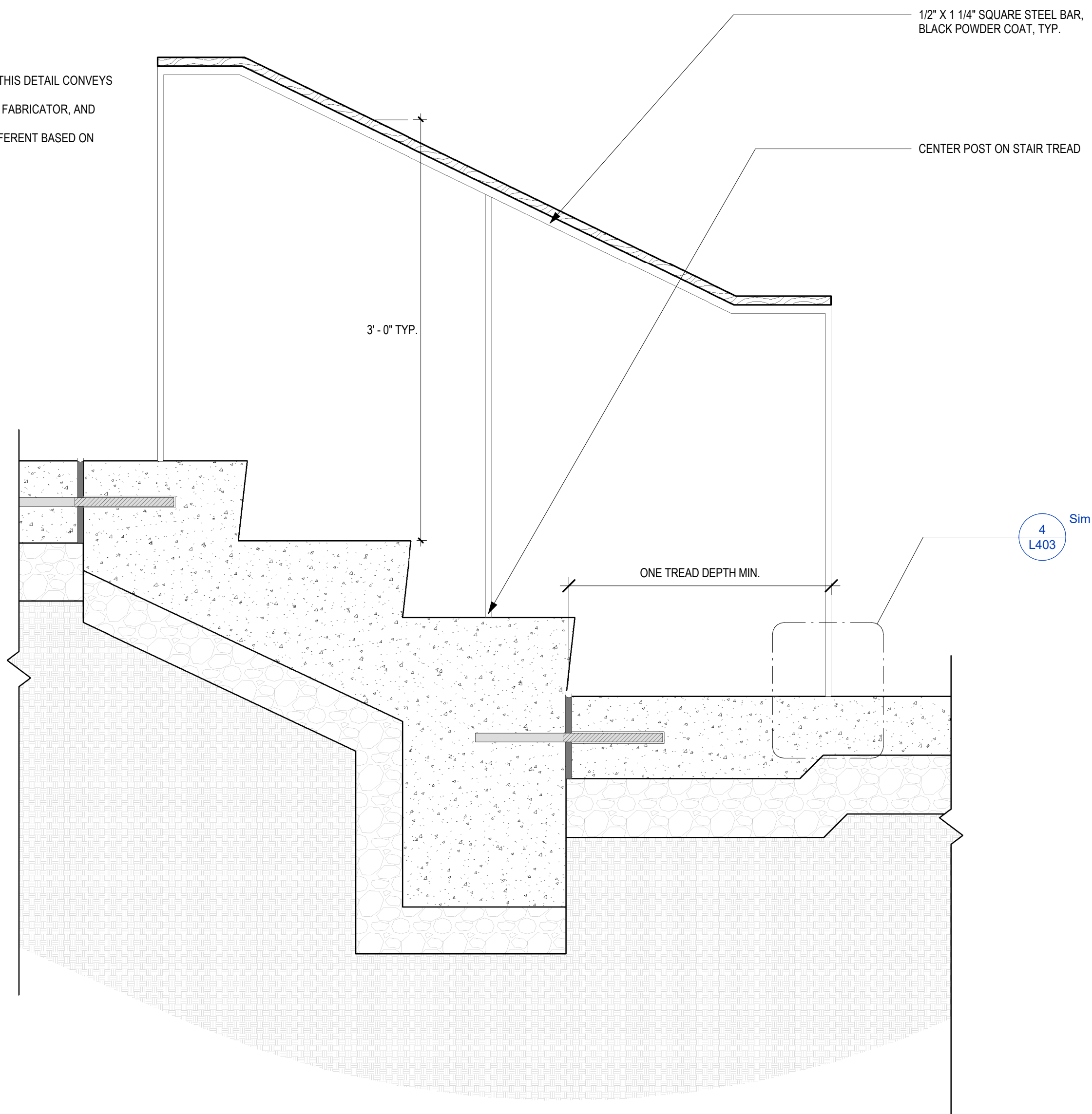
SITE DETAILS

L402



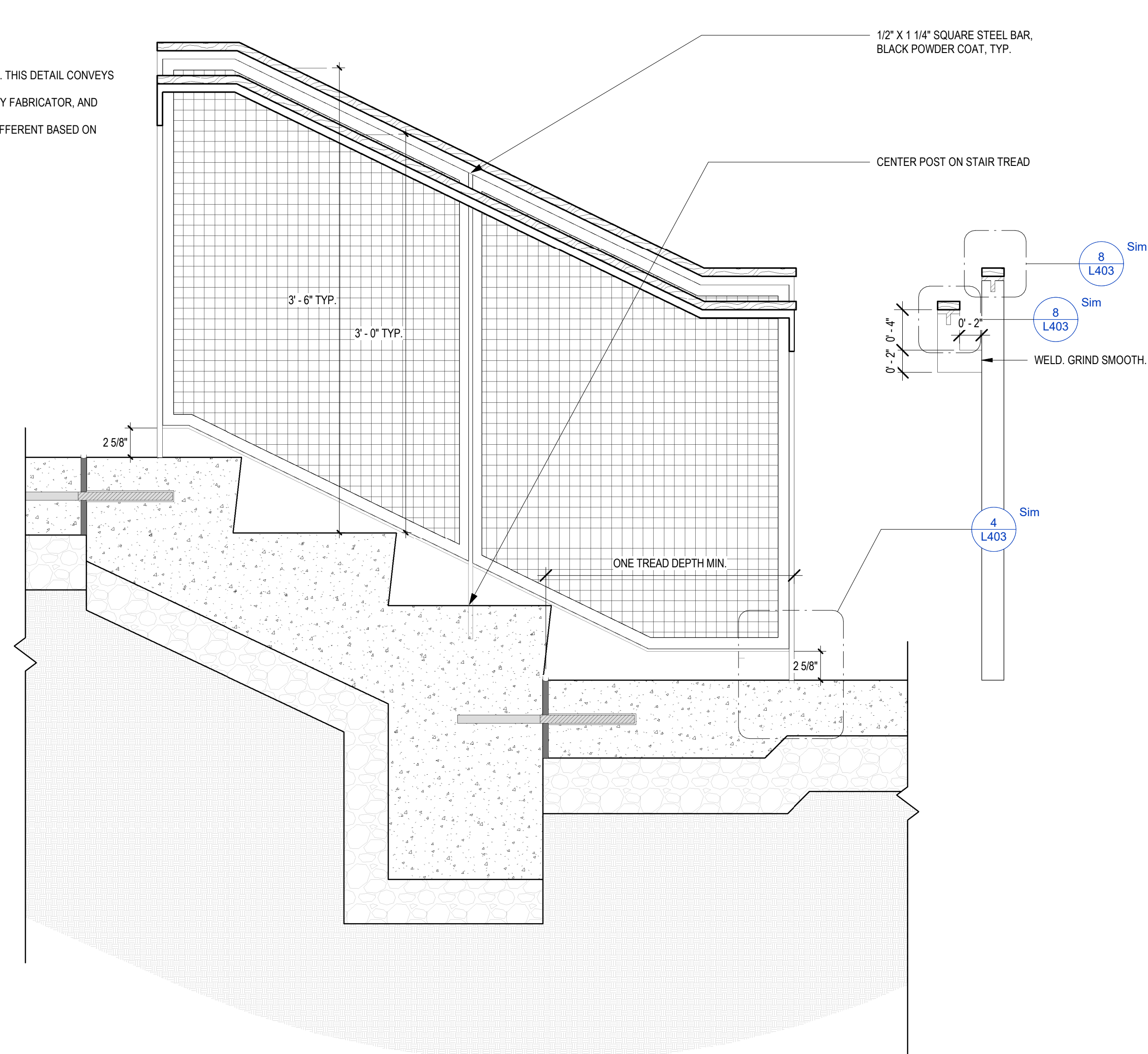
## NOTES:

1. STEEL RAILING WILL BE CUSTOM FABRICATED. THIS DETAIL CONVEYS DESIGN INTENT.
2. STRUCTURAL SUPPORT TO BE ENGINEERED BY FABRICATOR, AND APPROVED THROUGH SHOP DRAWINGS.
3. MEASUREMENTS BETWEEN POSTS WILL BE DIFFERENT BASED ON NUMBER OF STEPS AND LENGTH OF RAIL.
4. COLOR AND COATING: PO BLACK.
5. WOOD MATCH OAK WOOD CHOICE.



## NOTES:

1. STEEL RAILING WILL BE CUSTOM FABRICATED. THIS DETAIL CONVEYS DESIGN INTENT.
2. STRUCTURAL SUPPORT TO BE ENGINEERED BY FABRICATOR, AND APPROVED THROUGH SHOP DRAWINGS.
3. MEASUREMENTS BETWEEN POSTS WILL BE DIFFERENT BASED ON NUMBER OF STEPS AND LENGTH OF RAIL.
4. COLOR AND COATING: PO BLACK.



## KEYNOTES

## 01 PAVEMENT, RAMPS, AND CURBS

Keynote	Detail	SF
1VAG-2S	Crushed Stone with Agi Base	41,451 1,078 SF
1VAG-2S	Mexican Pebble with Agi Base	61,451 1,522 SF
1VPA-C	Concrete 4" - Smooth Finish with Seawall Siding	21,451 2,237 SF
1VPA-CWIR	Concrete 4" - Wide with Acid Wash with Seawall Siding	21,451 2,237 SF
1VPA-C	Concrete 4" - Single Color with Decorative Siding	11,451 6,402 SF
1VPA-STN-COPE	Stone Paver - Monolithic - 96x12x12 - Pool Coping	CLOWARD 470 SF
1VPA-STN-S	Grass Paver - Monolithic - 96x12x12 - with Conc Base	120,451 712 SF
1VPA-STN-BRD	Grass Paver - Monolithic - 96x12x12 - with Concrete Base Bridge G	120,451 121 SF
1VPA-STNG	Grass Paver - Monolithic - 66x12x12 - with Concrete Base	120,451 4,914 SF
1VPA-STNG	Grass Paver - Monolithic - 66x12x12 - with Trench Drain Base	61,452 174 SF

## 02 JOINTS

Keynote	Detail	LF
---------	--------	----

## 03 SITE STAIRS

Keynote	Detail	SF
3VSTRS-SA	Basalt Treads on COP Base - 6"x12"x6"	13401
3VSTRS-C	Concrete Slab - 6" x 12" - Acid Wash Natural Grey with Concrete with Shadowline	156401
3VSTRS-GR	Granite Treads on Concrete Base - 6"x12"	13401

## 04 SITE WALLS

Keynote		Detail	VSF / FF
4CWH6	8" Concrete Wall Boardform	16401	98 SF
4CWH6-HT12	Hst Tub Wall - 12"	17401	480 SF
4CWH8	8" Concrete Wall Boardform	16401	1,966 SF
4CWH12	12" Concrete Wall Boardform	16401	13,227 SF
4CWH12-BASALT	12" Basalt	17401	970 SF
4CWH24	24" Concrete Wall Boardform	16401	219 SF
4CWH24-BASALT	24" Basalt	17401	278 SF

\*\*\*LOOK FOR ISOMETRIC AND SECTION VIEWS OF WALLS THEIR ELEVATION RELATIONSHIPS

## 05 SITE AMENITIES

Keynote	Detail	Count
5SWKE	Surface Mount Mini Steel	71,402
5SWGLDR	Basalt Boulder	19,947
5SFF	Pyre 1" x 1/2" x 1/2" fire feature by Outdoor Elements	3,402
5SSE-15BAT	ManoCrown BR0011, BONCUBE Asear Tasler (OT)	INT DES
5SSE-48BAT	ManoCrown BR0021, BONCUBE Asear Tasler (OT)	INT DES
5SSE-49BAT	ManoCrown BR0031, BONCUBE Asear Tasler (OT)	INT DES
5SSE-49C2	ManoCrown BR0031, BONCUBE Asear Tasler (OT)	INT DES
5SSE-49C4	ManoCrown BR0031, BONCUBE Asear Tasler (OT)	INT DES
5SSE-49C6	ManoCrown BR0031, BONCUBE Asear Tasler (OT)	INT DES
5SSE-49C8	ManoCrown BR0031, BONCUBE Asear Tasler (OT)	INT DES
5SSE-49C10	ManoCrown BR0031, BONCUBE Asear Tasler (OT)	INT DES
5SSE-49C12	ManoCrown BR0031, BONCUBE Asear Tasler (OT)	INT DES
5SSE-49C14	ManoCrown BR0031, BONCUBE Asear Tasler (OT)	INT DES
5SSE-49C16	ManoCrown BR0031, BONCUBE Asear Tasler (OT)	INT DES
5SSE-49C18	ManoCrown BR0031, BONCUBE Asear Tasler (OT)	INT DES
5SSE-49C20	ManoCrown BR0031, BONCUBE Asear Tasler (OT)	INT DES
5SSE-49C22	ManoCrown BR0031, BONCUBE Asear Tasler (OT)	INT DES
5SSE-49C24	ManoCrown BR0031, BONCUBE Asear Tasler (OT)	INT DES
5SSE-49C26	ManoCrown BR0031, BONCUBE Asear Tasler (OT)	INT DES
5SSE-49C28	ManoCrown BR0031, BONCUBE Asear Tasler (OT)	INT DES
5SSE-49C30	ManoCrown BR0031, BONCUBE Asear Tasler (OT)	INT DES
5SSE-49C32	ManoCrown BR0031, BONCUBE Asear Tasler (OT)	INT DES
5SSE-49C34	ManoCrown BR0031, BONCUBE Asear Tasler (OT)	INT DES
5SSE-49C36	ManoCrown BR0031, BONCUBE Asear Tasler (OT)	INT DES
5SSE-49C38	ManoCrown BR0031, BONCUBE Asear Tasler (OT)	INT DES
5SSE-49C40	ManoCrown BR0031, BONCUBE Asear Tasler (OT)	INT DES
5SSE-49C42	ManoCrown BR0031, BONCUBE Asear Tasler (OT)	INT DES
5SSE-49C44	ManoCrown BR0031, BONCUBE Asear Tasler (OT)	INT DES
5SSE-49C46	ManoCrown BR0031, BONCUBE Asear Tasler (OT)	INT DES
5SSE-49C48	ManoCrown BR0031, BONCUBE Asear Tasler (OT)	INT DES
5SSE-49C50	ManoCrown BR0031, BONCUBE Asear Tasler (OT)	INT DES
5SSE-49C52	ManoCrown BR0031, BONCUBE Asear Tasler (OT)	INT DES
5SSE-49C54	ManoCrown BR0031, BONCUBE Asear Tasler (OT)	INT DES
5SSE-49C56	ManoCrown BR0031, BONCUBE Asear Tasler (OT)	INT DES
5SSE-49C58	ManoCrown BR0031, BONCUBE Asear Tasler (OT)	INT DES
5SSE-49C60	ManoCrown BR0031, BONCUBE Asear Tasler (OT)	INT DES
5SSE-49C62	ManoCrown BR0031, BONCUBE Asear Tasler (OT)	INT DES
5SSE-49C64	ManoCrown BR0031, BONCUBE Asear Tasler (OT)	INT DES
5SSE-49C66	ManoCrown BR0031, BONCUBE Asear Tasler (OT)	INT DES
5SSE-49C68	ManoCrown BR0031, BONCUBE Asear Tasler (OT)	INT DES
5SSE-49C70	ManoCrown BR0031, BONCUBE Asear Tasler (OT)	INT DES
5SSE-49C72	ManoCrown BR0031, BONCUBE Asear Tasler (OT)	INT DES
5SSE-49C74	ManoCrown BR0031, BONCUBE Asear Tasler (OT)	INT DES
5SSE-49C76	ManoCrown BR0031, BONCUBE Asear Tasler (OT)	INT DES
5SSE-49C78	ManoCrown BR0031, BONCUBE Asear Tasler (OT)	INT DES
5SSE-49C80	ManoCrown BR0031, BONCUBE Asear Tasler (OT)	INT DES
5SSE-49C82	ManoCrown BR0031, BONCUBE Asear Tasler (OT)	INT DES
5SSE-49C84	ManoCrown BR0031, BONCUBE Asear Tasler (OT)	INT DES
5SSE-49C86	ManoCrown BR0031, BONCUBE Asear Tasler (OT)	INT DES
5SSE-49C88	ManoCrown BR0031, BONCUBE Asear Tasler (OT)	INT DES
5SSE-49C90	ManoCrown BR0031, BONCUBE Asear Tasler (OT)	INT DES
5SSE-49C92	ManoCrown BR0031, BONCUBE Asear Tasler (OT)	INT DES
5SSE-49C94	ManoCrown BR0031, BONCUBE Asear Tasler (OT)	INT DES
5SSE-49C96	ManoCrown BR0031, BONCUBE Asear Tasler (OT)	INT DES
5SSE-49C98	ManoCrown BR0031, BONCUBE Asear Tasler (OT)	INT DES
5SSE-49C100	ManoCrown BR0031, BONCUBE Asear Tasler (OT)	INT DES
5SSE-49C102	ManoCrown BR0031, BONCUBE Asear Tasler (OT)	INT DES
5SSE-49C104	ManoCrown BR0031, BONCUBE Asear Tasler (OT)	INT DES
5SSE-49C106	ManoCrown BR0031, BONCUBE Asear Tasler (OT)	INT DES
5SSE-49C108	ManoCrown BR0031, BONCUBE Asear Tasler (OT)	INT DES
5SSE-49C110	ManoCrown BR0031, BONCUBE Asear Tasler (OT)	INT DES
5SSE-49C112	ManoCrown BR0031, BONCUBE Asear Tasler (OT)	INT DES
5SSE-49C114	ManoCrown BR0031, BONCUBE Asear Tasler (OT)	INT DES
5SSE-49C116	ManoCrown BR0031, BONCUBE Asear Tasler (OT)	INT DES
5SSE-49C118	ManoCrown BR0031, BONCUBE Asear Tasler (OT)	INT DES
5SSE-49C120	ManoCrown BR0031, BONCUBE Asear Tasler (OT)	INT DES
5SSE-49C122	ManoCrown BR0031, BONCUBE Asear Tasler (OT)	INT DES
5SSE-49C124	ManoCrown BR0031, BONCUBE Asear Tasler (OT)	INT DES
5SSE-49C126	ManoCrown BR0031, BONCUBE Asear Tasler (OT)	INT DES
5SSE-49C128	ManoCrown BR0031, BONCUBE Asear Tasler (OT)	INT DES
5SSE-49C130	ManoCrown BR0031, BONCUBE Asear Tasler (OT)	INT DES
5SSE-49C132	ManoCrown BR0031, BONCUBE Asear Tasler (OT)	INT DES
5SSE-49C134	ManoCrown BR0031, BONCUBE Asear Tasler (OT)	INT DES
5SSE-49C136	ManoCrown BR0031, BONCUBE Asear Tasler (OT)	INT DES
5SSE-49C138	ManoCrown BR0031, BONCUBE Asear Tasler (OT)	INT DES
5SSE-49C140	ManoCrown BR0031, BONCUBE Asear Tasler (OT)	INT DES
5SSE-49C142	ManoCrown BR0031, BONCUBE Asear Tasler (OT)	INT DES
5SSE-49C144	ManoCrown BR0031, BONCUBE Asear Tasler (OT)	INT DES
5SSE-49C146	ManoCrown BR0031, BONCUBE Asear Tasler (OT)	INT DES
5SSE-49C148	ManoCrown BR0031, BONCUBE Asear Tasler (OT)	INT DES
5SSE-49C150	ManoCrown BR0031, BONCUBE Asear Tasler (OT)	INT DES
5SSE-49C152	ManoCrown BR0031, BONCUBE Asear Tasler (OT)	INT DES
5SSE-49C154	ManoCrown BR0031, BONCUBE Asear Tasler (OT)	INT DES
5SSE-49C156	ManoCrown BR0031, BONCUBE Asear Tasler (OT)	INT DES
5SSE-49C158	ManoCrown BR0031, BONCUBE Asear Tasler (OT)	INT DES
5SSE-49C160	ManoCrown BR0031, BONCUBE Asear Tasler (OT)	INT DES
5SSE-49C162	ManoCrown BR0031, BONCUBE Asear Tasler (OT)	INT DES
5SSE-49C164	ManoCrown BR0031, BONCUBE Asear Tasler (OT)	INT DES
5SSE-49C166	ManoCrown BR0031, BONCUBE Asear Tasler (OT)	INT DES
5SSE-49C168	ManoCrown BR0031, BONCUBE Asear Tasler (OT)	INT DES
5SSE-49C170	ManoCrown BR0031, BONCUBE Asear Tasler (OT)	INT DES
5SSE-49C172	ManoCrown BR0031, BONCUBE Asear Tasler (OT)	INT DES
5SSE-49C174	ManoCrown BR0031, BONCUBE Asear Tasler (OT)	INT DES
5SSE-49C176	ManoCrown BR0031, BONCUBE Asear Tasler (OT)	INT DES
5SSE-49C178	ManoCrown BR0031, BONCUBE Asear Tasler (OT)	INT DES
5SSE-49C180	ManoCrown BR0031, BONCUBE Asear Tasler (OT)	INT DES
5SSE-49C182	ManoCrown BR0031, BONCUBE Asear Tasler (OT)	INT DES
5SSE-49C184	ManoCrown BR0031, BONCUBE Asear Tasler (OT)	INT DES
5SSE-49C186	ManoCrown BR0031, BONCUBE Asear Tasler (OT)	INT DES
5SSE-49C188	ManoCrown BR0031, BONCUBE Asear Tasler (OT)	INT DES
5SSE-49C190	ManoCrown BR0031, BONCUBE Asear Tasler (OT)	INT DES
5SSE-49C192	ManoCrown BR0031, BONCUBE Asear Tasler (OT)	INT DES
5SSE-49C194	ManoCrown BR0031, BONCUBE Asear Tasler (OT)	INT DES
5SSE-49C196	ManoCrown BR0031, BONCUBE Asear Tasler (OT)	INT DES
5SSE-49C198	ManoCrown BR0031, BONCUBE Asear Tasler (OT)	INT DES
5SSE-49C200	ManoCrown BR0031, BONCUBE Asear Tasler (OT)	INT DES
5SSE-49C202	ManoCrown BR0031, BONCUBE Asear Tasler (OT)	INT DES
5SSE-49C204	ManoCrown BR0031, BONCUBE Asear Tasler (OT)	INT DES
5SSE-49C206	ManoCrown BR0031, BONCUBE Asear Tasler (OT)	INT DES
5SSE-49C208	ManoCrown BR0031, BONCUBE Asear Tasler (OT)	INT DES
5SSE-49C210	ManoCrown BR0031, BONCUBE Asear Tasler (OT)	INT DES
5SSE-49C212	ManoCrown BR0031, BONCUBE Asear Tasler (OT)	INT DES
5SSE-49C214	ManoCrown BR0031, BONCUBE Asear Tasler (OT)	INT DES
5SSE-49C216	ManoCrown BR0031, BONCUBE Asear Tasler (OT)	INT DES
5SSE-49C218	ManoCrown BR0031, BONCUBE Asear Tasler (OT)	INT DES
5SSE-49C220	ManoCrown BR0031, BONCUBE Asear Tasler (OT)	INT DES
5SSE-49C222	ManoCrown BR0031, BONCUBE Asear Tasler (OT)	INT DES
5SSE-49C224	ManoCrown BR0031, BONCUBE Asear Tasler (OT)	INT DES
5SSE-49C226	ManoCrown BR0031, BONCUBE Asear Tasler (OT)	INT DES
5SSE-49C228	ManoCrown BR0031, BONCUBE Asear Tasler (OT)	INT DES
5SSE-49C230	ManoCrown BR0031, BONCUBE Asear Tasler (OT)	INT DES
5SSE-49C232	ManoCrown BR0031, BONCUBE Asear Tasler (OT)	INT DES
5SSE-49C234	ManoCrown BR0031, BONCUBE Asear Tasler (OT)	INT DES
5SSE-49C236	ManoCrown BR0031, BONCUBE Asear Tasler (OT)	INT DES
5SSE-49C238	ManoCrown BR0031, BONCUBE Asear Tasler (OT)	INT DES
5SSE-49C240	ManoCrown BR0031, BONCUBE Asear Tasler (OT)	INT DES
5SSE-49C242	ManoCrown BR0031, BONCUBE Asear Tasler (OT)	INT DES
5SSE-49C244	ManoCrown BR0031, BONCUBE Asear Tasler (OT)	INT DES
5SSE-49C246	ManoCrown BR0031, BONCUBE Asear Tasler (OT)	INT DES
5SSE-49C248	ManoCrown BR0031, BONCUBE Asear Tasler (OT)	INT DES
5SSE-49C250	ManoCrown BR0031, BONCUBE Asear Tasler (OT)	INT DES
5SSE-49C252	ManoCrown BR0031, BONCUBE Asear Tasler (OT)	INT DES
5SSE-49C254	ManoCrown BR0031, BONCUBE Asear Tasler (OT)	INT DES
5SSE-49C256	ManoCrown BR0031, BONCUBE Asear Tasler (OT)	INT DES
5SSE-49C258	ManoCrown BR0031, BONCUBE Asear Tasler (OT)	INT DES
5SSE-49C260	ManoCrown BR0031, BONCUBE Asear Tasler (OT)	INT DES
5SSE-49C262	ManoCrown BR0031, BONCUBE Asear Tasler (OT)	INT DES
5SSE-49C264	ManoCrown BR0031, BONCUBE Asear Tasler (OT)	INT DES
5SSE-49C266	ManoCrown BR0031, BONCUBE Asear Tasler (OT)	INT DES
5SSE-49C268	ManoCrown BR0031, BONCUBE Asear Tasler (OT)	INT DES
5SSE-49C270	ManoCrown BR0031, BONCUBE Asear Tasler (OT)	INT DES
5SSE-49C272	ManoCrown BR0031, BONCUBE Asear Tasler (OT)	INT DES
5SSE-49C274	ManoCrown BR0031, BONCUBE Asear Tasler (OT)	INT DES
5SSE-49C276	ManoCrown BR0031, BONCUBE Asear Tasler (OT)	INT DES
5SSE-49C278	ManoCrown BR0031, BONCUBE Asear Tasler (OT)	INT DES
5SSE-49C280	ManoCrown BR0031, BONCUBE Asear Tasler (OT)	INT DES
5SSE-49C282	ManoCrown BR0031, BONCUBE Asear Tasler (OT)	INT DES
5SSE-49C284	ManoCrown BR0031, BONCUBE Asear Tasler (OT)	INT DES
5SSE-49C286	ManoCrown BR0031, BONCUBE Asear Tasler (OT)	INT DES
5SSE-49C288	ManoCrown BR0031, BONCUBE Asear Tasler (OT)	INT DES
5SSE-49C290	ManoCrown BR0031, BONCUBE Asear Tasler (OT)	INT DES
5SSE-49C292	ManoCrown BR0031, BONCUBE Asear Tasler (OT)	INT DES
5SSE-49C294	ManoCrown BR0031, BONCUBE Asear Tasler (OT)	INT DES
5SSE-49C296	ManoCrown BR0031, BONCUBE Asear Tasler (OT)	INT DES
5SSE-49C298	ManoCrown BR0031, BONCUBE Asear Tasler (OT)	INT DES
5SSE-49C300	ManoCrown BR0031, BONCUBE Asear Tasler (OT)	INT DES
5SSE-49C302	ManoCrown BR0031, BONCUBE Asear Tasler (OT)	INT DES
5SSE-49C304	ManoCrown BR0031, BONCUBE Asear Tasler (OT)	INT DES
5SSE-49C306	ManoCrown BR0031, BONCUBE Asear Tasler (OT)	INT DES
5SSE-49C308	ManoCrown BR0031, BONCUBE Asear Tasler (OT)	INT DES
5SSE-49C310	ManoCrown BR0031, BONCUBE Asear Tasler (OT)	INT DES
5SSE-49C312	ManoCrown BR0031, BONCUBE Asear Tasler (OT)	INT DES
5SSE-49C314	ManoCrown BR0031, BONCUBE Asear Tasler (OT)	INT DES
5SSE-49C316	ManoCrown BR0031, BONCUBE Asear Tasler (OT)	INT DES
5SSE-49C318	ManoCrown BR0031, BONCUBE Asear Tasler (OT)	INT DES
5SSE-49C320	ManoCrown BR0031, BONCUBE Asear Tasler (OT)	INT DES
5SSE-49C322	ManoCrown BR0031, BONCUBE Asear Tasler (OT)	INT DES
5SSE-49C324	ManoCrown BR0031, BONCUBE Asear Tasler (OT)	INT DES
5SSE-49C326	ManoCrown BR0031, BONCUBE Asear Tasler (OT)	INT DES
5SSE-49C328	ManoCrown BR0031, BONCUBE Asear Tasler (OT)	INT DES
5SSE-49C330	ManoCrown BR0031, BONCUBE Asear Tasler (OT)	INT DES
5SSE-49C332	ManoCrown BR0031, BONCUBE Asear Tasler (OT)	INT DES
5SSE-49C334	ManoCrown BR0031, BONCUBE Asear Tasler (OT)	INT DES
5SSE-49C336	ManoCrown BR0031, BONCUBE Asear Tasler (OT)	INT DES
5SSE-49C338	ManoCrown BR0031, BONCUBE Asear Tasler (OT)	INT DES
5SSE-49C340	ManoCrown BR0031, BONCUBE Asear Tasler (OT)	INT DES
5SSE-49C342	ManoCrown BR0031, BONCUBE Asear Tasler (OT)	INT DES
5SSE-49C344	ManoCrown BR0031, BONCUBE Asear Tasler (OT)	INT DES
5SSE-49C346	ManoCrown BR0031, BONCUBE Asear Tasler (OT)	INT DES
5SSE-49C348	ManoCrown BR0031, BONCUBE Asear Tasler (OT)	INT DES
5SSE-49C350	ManoCrown BR0031, BONCUBE Asear Tasler (OT)	INT DES
5SSE-49C352	ManoCrown BR0031, BONCUBE Asear Tasler (OT)	INT DES
5SSE-49C354	ManoCrown BR0031, BONCUBE Asear Tasler (OT)	INT DES
5SSE-49C356	ManoCrown BR0031, BONCUBE Asear Tasler (OT)	INT DES
5SSE-49C358	ManoCrown BR0031, BONCUBE Asear Tasler (OT)	INT DES
5SSE-49C360	ManoCrown BR0031, BONCUBE Asear Tasler (OT)	INT DES
5SSE-49C362	ManoCrown BR0031, BONCUBE Asear Tasler (OT)	INT DES
5SSE-49C364	ManoCrown BR0031, BONCUBE Asear Tasler (OT)	INT DES
5SSE-49C366	ManoCrown BR0031, BONCUBE Asear Tasler (OT)	INT DES
5SSE-49C368	ManoCrown BR0031, BONCUBE Asear Tasler (OT)	INT DES
5SSE-49C370	ManoCrown BR0031, BONCUBE Asear Tasler (OT)	INT DES
5SSE-49C372	ManoCrown BR0031, BONCUBE Asear Tasler (OT)	INT DES
5SSE-49C374	ManoCrown BR0031, BONCUBE Asear Tasler (OT)	INT DES
5SSE-49C376	ManoCrown BR0031, BONCUBE Asear Tasler (OT)	INT DES
5SSE-49C378	ManoCrown BR0031, BONCUBE Asear Tasler (OT)	INT DES
5SSE-49C380	ManoCrown BR0031, BONCUBE Asear Tasler (OT)	INT DES
5SSE-49C382	ManoCrown BR0031, BONCUBE Asear Tasler (OT)	INT DES
5SSE-49C384	ManoCrown BR0031, BONCUBE Asear Tasler (OT)	INT DES
5SSE-49C386	ManoCrown BR0031, BONCUBE Asear Tasler (OT)	INT DES
5SSE-49C388	ManoCrown BR0031, BONCUBE Asear Tasler (OT)	INT DES
5SSE-49C390	ManoCrown BR0031, BONCUBE Asear Tasler (OT)	INT DES
5SSE-49C392	ManoCrown BR0031, BONCUBE Asear Tasler (OT)	INT DES
5SSE-49C394	ManoCrown BR0031, BONCUBE Asear Tasler (OT)	INT DES
5SSE-49C396	ManoCrown BR0031, BONCUBE Asear Tasler (OT)	INT DES
5SSE-49C398	ManoCrown BR0031, BONCUBE Asear Tasler (OT)	INT DES
5SSE-49C400	ManoCrown BR0031, BONCUBE Asear Tasler (OT)	INT DES
5SSE-49C402	ManoCrown BR0031, BONCUBE Asear Tasler (OT)	INT DES
5SSE-49C404	ManoCrown BR0031, BONCUBE Asear Tasler (OT)	INT DES
5SSE-49C406	ManoCrown BR0031, BONCUBE Asear Tasler (OT)	INT DES
5SSE-49C408	ManoCrown BR0031, BONCUBE Asear Tasler (OT)	INT DES
5SSE-49C410	ManoCrown BR0031, BONCUBE Asear Tasler (OT)	INT DES
5SSE-49C412	ManoCrown BR0031, BONCUBE Asear Tasler (OT)	INT DES
5SSE-49C414	ManoCrown BR0031, BONCUBE Asear Tasler (OT)	INT DES
5SSE-49C416	ManoCrown BR0031, BONCUBE Asear Tasler (OT)	INT DES
5SSE-49C418	ManoCrown BR0031, BONCUBE Asear Tasler (OT)	INT DES
5SSE-49C420	ManoCrown BR0031, BONCUBE Asear Tasler (OT)	INT DES
5SSE-49C422	ManoCrown BR0031, BONCUBE Asear Tasler (OT)	INT DES
5SSE-49C424	ManoCrown BR0031, BONCUBE Asear Tasler (OT)	INT DES
5SSE-49C426	ManoCrown BR0031, BONCUBE Asear Tasler (OT)	INT DES
5SSE-49C428	ManoCrown BR0031, BONCUBE Asear Tasler (OT)	INT DES
5SSE-49C430	ManoCrown BR0031, BONCUBE Asear Tasler (OT)	INT DES
5SSE-49C432	ManoCrown BR0031, BONCUBE Asear Tasler (OT)	INT DES
5SSE-49C434	ManoCrown BR0031, BONCUBE Asear Tasler (OT)	INT DES
5SSE-49C436	ManoCrown BR0031, BONCUBE Asear Tasler (OT)	INT DES
5SSE-49C438	ManoCrown BR0031, BONCUBE Asear Tasler (OT)	INT DES
5SSE-49C440	ManoCrown BR0031, BONCUBE Asear Tasler (OT)	INT DES
5SSE-49C442	ManoCrown BR0031, BONCUBE Asear Tasler (OT)	INT DES
5SSE-49C444	ManoCrown BR0031, BONCUBE Asear Tasler (OT)	INT DES
5SSE-49C446	ManoCrown BR0031, BONCUBE Asear Tasler (OT)	INT DES
5SSE-49C448	ManoCrown BR0031, BONCUBE Asear Tasler (OT)	INT DES
5SSE-49C450	ManoCrown BR0031, BONCUBE Asear Tasler (OT)	INT DES</

## 06 SITE RAILINGS AND FENCES

Keynote	Detail	LF
6GR18	Kukio - Flat - Space - Wire Mesh - 18"	45
6GR42	Kukio - Flat - Space - Wire Mesh - 42"	11,403
6HR36	Kukio - Posts - Flat - Spaced - 36"	27
		228

\*\*\*SITE RAILING TO MATCH WITH THE O&A DETAIL FOR THE ABOVE-MENTIONED GUARDRAIL. ADJUST DESIGN TO MEET THE SPECIFIED VARIATIONS OF RAILING WHEN NECESSARY.

## 07 SITE LIGHTING

Keynote	Detail	Count
---------	--------	-------

## 08 SITE DRAINAGE

Keynote	Detail	Count
---------	--------	-------

## 09 PLANTING AREAS

Keynote	Detail	SF
9NPA	Slope Stabilization / Native Alpine Groundcover	62,837 SF
9PAL	Planting Area	26,910 SF
9SCDLAWN	Lawn	4,335 SF

## 10 MISCELLANEOUS ELEMENTS

Keynote	Detail	Count
---------	--------	-------

## 1 RAILING - STAIR - STEEL - SIMPLE



## 6 GUARDRAIL - STAIR - STEEL



## 2 HANDRAIL - Kukio - Posts - Flat - Spaced - 36"



## 3 HANDRAIL - TOP SECTION



## 4 RAILING - STAIR - POST ATTACHMENT, TYPICAL



## 5 HANDRAIL - PLAN VIEW - OPTIONS



## 6 GUARDRAIL - Kukio - Posts - Flat - Spaced - 42"



## 7 GUARDRAIL - TOP SECTION



## 8 GUARDRAIL - BASE SECTION



## 9 GUARDRAIL - PLAN VIEW - OPTIONS



## 10 GUARDRAIL - PLAN VIEW - OPTIONS



## 11 GUARDRAIL - PLAN VIEW - OPTIONS



## 12 GUARDRAIL - PLAN VIEW - OPTIONS



## 13 GUARDRAIL - PLAN VIEW - OPTIONS



## 14 GUARDRAIL - PLAN VIEW - OPTIONS



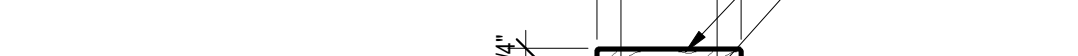
## 15 GUARDRAIL - PLAN VIEW - OPTIONS



## 16 GUARDRAIL - PLAN VIEW - OPTIONS



## 17 GUARDRAIL - PLAN VIEW - OPTIONS



## 18 GUARDRAIL - PLAN VIEW - OPTIONS



## 19 GUARDRAIL - PLAN VIEW - OPTIONS



## 20 GUARDRAIL - PLAN VIEW - OPTIONS



## 21 GUARDRAIL - PLAN VIEW - OPTIONS



## 22 GUARDRAIL - PLAN VIEW - OPTIONS



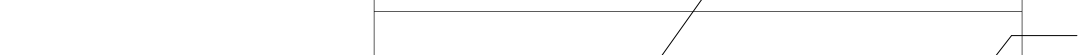
## 23 GUARDRAIL - PLAN VIEW - OPTIONS



## 24 GUARDRAIL - PLAN VIEW - OPTIONS



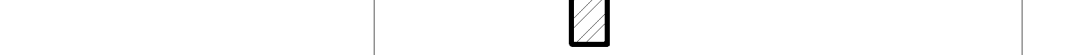
## 25 GUARDRAIL - PLAN VIEW - OPTIONS



## 26 GUARDRAIL - PLAN VIEW - OPTIONS



## 27 GUARDRAIL - PLAN VIEW - OPTIONS



## 28 GUARDRAIL - PLAN VIEW - OPTIONS



## 29 GUARDRAIL - PLAN VIEW - OPTIONS



## 30 GUARDRAIL - PLAN VIEW - OPTIONS



## 31 GUARDRAIL - PLAN VIEW - OPTIONS



## 32 GUARDRAIL - PLAN VIEW - OPTIONS



## 33 GUARDRAIL - PLAN VIEW - OPTIONS



## 34 GUARDRAIL - PLAN VIEW - OPTIONS



## 35 GUARDRAIL - PLAN VIEW - OPTIONS



## 36 GUARDRAIL - PLAN VIEW - OPTIONS



## 37 GUARDRAIL - PLAN VIEW - OPTIONS



## 38 GUARDRAIL - PLAN VIEW - OPTIONS



## 39 GUARDRAIL - PLAN VIEW - OPTIONS



## 40 GUARDRAIL - PLAN VIEW - OPTIONS



## 41 GUARDRAIL - PLAN VIEW - OPTIONS



## 42 GUARDRAIL - PLAN VIEW - OPTIONS



## 43 GUARDRAIL - PLAN VIEW - OPTIONS



## 44 GUARDRAIL - PLAN VIEW - OPTIONS



## 45 GUARDRAIL - PLAN VIEW - OPTIONS



## 46 GUARDRAIL - PLAN VIEW - OPTIONS



## 47 GUARDRAIL - PLAN VIEW - OPTIONS



## 48 GUARDRAIL - PLAN VIEW - OPTIONS



## 49 GUARDRAIL - PLAN VIEW - OPTIONS



## 50 GUARDRAIL - PLAN VIEW - OPTIONS



## 51 GUARDRAIL - PLAN VIEW - OPTIONS



## 52 GUARDRAIL - PLAN VIEW - OPTIONS



## 53 GUARDRAIL - PLAN VIEW - OPTIONS



## 54 GUARDRAIL - PLAN VIEW - OPTIONS



## 55 GUARDRAIL - PLAN VIEW - OPTIONS



## 56 GUARDRAIL - PLAN VIEW - OPTIONS



## 57 GUARDRAIL - PLAN VIEW - OPTIONS



## 58 GUARDRAIL - PLAN VIEW - OPTIONS



## 59 GUARDRAIL - PLAN VIEW - OPTIONS



## 60 GUARDRAIL - PLAN VIEW - OPTIONS



## 61 GUARDRAIL - PLAN VIEW - OPTIONS



## 62 GUARDRAIL - PLAN VIEW - OPTIONS



## 63 GUARDRAIL - PLAN VIEW - OPTIONS



## 64 GUARDRAIL - PLAN VIEW - OPTIONS



## 65 GUARDRAIL - PLAN VIEW - OPTIONS



## 66 GUARDRAIL - PLAN VIEW - OPTIONS



## 67 GUARDRAIL - PLAN VIEW - OPTIONS



## 68 GUARDRAIL - PLAN VIEW - OPTIONS



## 69 GUARDRAIL - PLAN VIEW - OPTIONS



## 70 GUARDRAIL - PLAN VIEW - OPTIONS



## 71 GUARDRAIL - PLAN VIEW - OPTIONS



## 72 GUARDRAIL - PLAN VIEW - OPTIONS



## 73 GUARDRAIL - PLAN VIEW - OPTIONS



## 74 GUARDRAIL - PLAN VIEW - OPTIONS



## 75 GUARDRAIL - PLAN VIEW - OPTIONS



## 76 GUARDRAIL - PLAN VIEW - OPTIONS



## 77 GUARDRAIL - PLAN VIEW - OPTIONS



## 78 GUARDRAIL - PLAN VIEW - OPTIONS



## 79 GUARDRAIL - PLAN VIEW - OPTIONS



## 80 GUARDRAIL - PLAN VIEW - OPTIONS



## 81 GUARDRAIL - PLAN VIEW - OPTIONS



## 82 GUARDRAIL - PLAN VIEW - OPTIONS



## 83 GUARDRAIL - PLAN VIEW - OPTIONS



## 84 GUARDRAIL - PLAN VIEW - OPTIONS



## 85 GUARDRAIL - PLAN VIEW - OPTIONS



## 86 GUARDRAIL - PLAN VIEW - OPTIONS



## 87 GUARDRAIL - PLAN VIEW - OPTIONS



## 88 GUARDRAIL - PLAN VIEW - OPTIONS



## 89 GUARDRAIL - PLAN VIEW - OPTIONS



## 90 GUARDRAIL - PLAN VIEW - OPTIONS



## 91 GUARDRAIL - PLAN VIEW - OPTIONS



## 92 GUARDRAIL - PLAN VIEW - OPTIONS



## 93 GUARDRAIL - PLAN VIEW - OPTIONS

